



# What is a Public Safety Power Shutoff?

If extreme weather conditions threaten our ability to safely operate the electrical grid, we may turn off power. This safety measure is called a Public Safety Power Shutoff, or PSPS.

We consider many factors when we're deciding whether a PSPS is necessary, including:



High winds



Dry vegetation



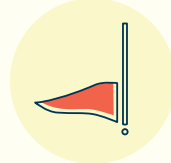
Temperature



Low humidity levels



Real-time observations from the field



Red Flag Warning



Collaboration with local, state and regional agencies

## How we prepare for wildfires year-round

Because Public Safety Power Shutoffs can last multiple days, it's important that we're all prepared and you have an emergency plan in place.

We take extra precautions to protect people, property and natural environments. Every year, we look at our service areas and assess the need for enhanced tree and brush clearing. We modify or replace equipment where needed to increase fire resistance and reduce the risk of an ignition.

## Here's what you can expect

If we need to activate a PSPS, we work to minimize the number of people impacted and the length of time without power.

### KEEPING YOU INFORMED

Before, during and after a PSPS, we'll

provide information and updates about

what's happening in many ways. Be sure

to update your contact information on the web or in the PGE app so we can stay in

communication with you.

### SUPPORTING OUR COMMUNITIES

During a PSPS, we'll set up our Community Resource Centers to provide information, water, ice, charging for electronic

devices and Wi-Fi access.

### RESTORING YOUR POWER SAFELY

When it's safe to do so, our crews visually inspect our lines and equipment mile-by-mile for damage and make necessary

repairs, working as quickly as safety

allows to restore power. Take a look at our graphic on the back to see what steps we

take to get your power back on safely.

You can find more at

[portlandgeneral.com/publicsafety](http://portlandgeneral.com/publicsafety)

# Steps you should take to prepare

Depending on weather conditions and other factors, a Public Safety Power Shutoff (PSPS) could last multiple days. We recommend storing all your preparedness items in waterproof and rodent-proof containers and replenishing things, as needed, at least once a year.

## 1 STAY IN THE KNOW

Update your contact information with us so we can keep you informed.



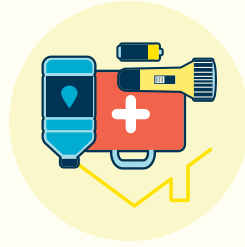
## 3 MAKE A PLAN

Keep your family and your home safe during an outage.



## 2 CREATE AN OUTAGE KIT

Make sure everyone in your home knows where to find it.



Some basic items to include:

- Emergency phone numbers, including PGE Customer Service: 503-228-6322.
- **Our customer service advisors can assist you in 200+ languages.**

- Flashlights or headlamps
- Battery-powered or hand-crank radio
- Extra batteries (especially for oxygen tanks or other medical equipment)
- Electronic device chargers, including a car charger
- Water, one gallon per person per day, especially if you rely on an electric pump for water

- Frozen cold packs or water bags/bottles to keep food and medicine cold until you can get ice

- Nonperishable food and a can opener, pots, pans and utensils
- Portable cooler
- Board games, books and playing cards
- Outdoor barbecue, gas grill or camp stove, plus fuel and a lighter or matches

## HELP YOUR DEVICE BATTERY LAST:

- Don't turn it off — your tablet or phone uses more battery when being turned off and on, so use sleep mode instead.
- Manually disable Bluetooth and notifications you don't need (leave emergency notifications on).
- Turn Wi-Fi off when not needed.
- Turn the brightness of the display down as low as possible.
- Close apps when you're done using them.

- Plan ahead to relocate with a friend, family member or to a shelter, especially if you have a medical condition that requires electricity or if you'll need to work or learn from home during an outage.
- Plan for medical needs so you can still power medical equipment during an outage and consider enrolling in our Medical Certificate program. This will help us proactively communicate with you about outages. Visit [portlandgeneral.com/medical](http://portlandgeneral.com/medical) or call 503-612-3838 to learn more about the program.
- Consider buying a backup generator and follow manufacturers' guidelines for its safe operation.
- Plan for feeding and watering pets or livestock if you rely on an electric pump for water.
- Get more information from your county's website or the **National Fire Protection Association**, the **Red Cross** and **Ready.gov**.

Find additional preparation tips at [portlandgeneral.com/prepnow](http://portlandgeneral.com/prepnow)