

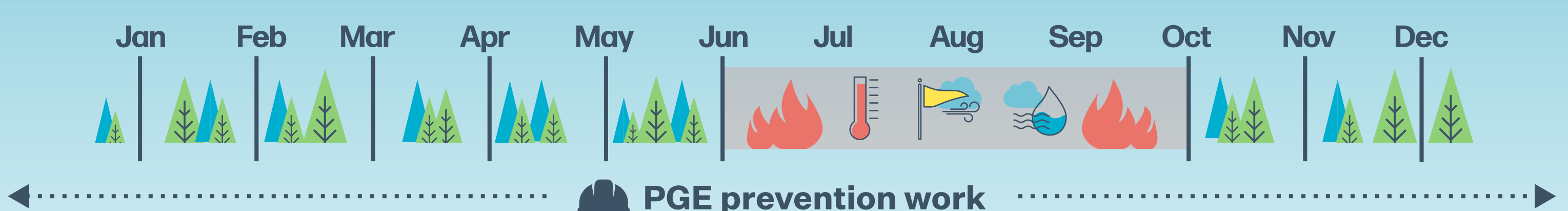


# How we prepare for wildfires

As Oregon becomes hotter and drier, we're working harder than ever to reduce the risk and impact of wildfires.



Our wildfire plan is designed to protect **people, property** and **public spaces**.



Fire season typically extends from May through October, but we do prevention work **all year long**.

## Risk assessments

Using the latest scientific data and risk modeling, we've identified areas that are at higher risk for a safety-related outage:



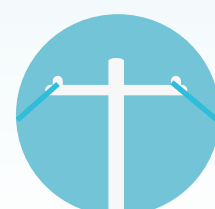
Climate



Population



Geography



Equipment

## Design and construction

With smarter designs, electrical equipment and upgrades, we can help reduce the risk of sparking and increase fire resistance.



Fire-resistant poles and cross arms and insulated, covered wire



Expanded line inspections



Safety-adjusted equipment settings



Enhanced remote monitoring



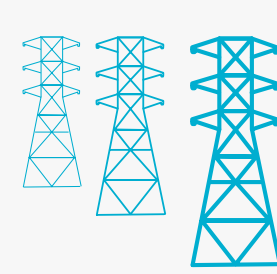
Increased early alert systems

## Tree and brush trimming

Our crews work year-round to keep trees, branches and brush clear of our power lines across our service area by managing:



2.2 million trees



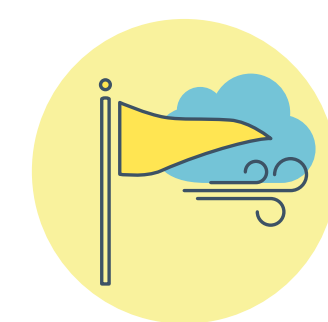
Nearly 12,000 miles of overhead power lines



A budget that accounts for one-third of annual wildfire dollars

## Public Safety Power Shutoffs (PSPS)

Turning off the power is a **last-resort** safety measure to help protect lives and property.



## Our work is one part of the big picture.

Wildfire prevention takes all of us, which is why we work closely with local, state and federal land and emergency management agencies.

## Our wildfire preparation will continue to evolve.

As we plan for the future, we'll keep the customers and communities we serve at the heart of everything we do.



Visit [portlandgeneral.com/prepinfo](http://portlandgeneral.com/prepinfo) to learn more about what we're doing to prepare.