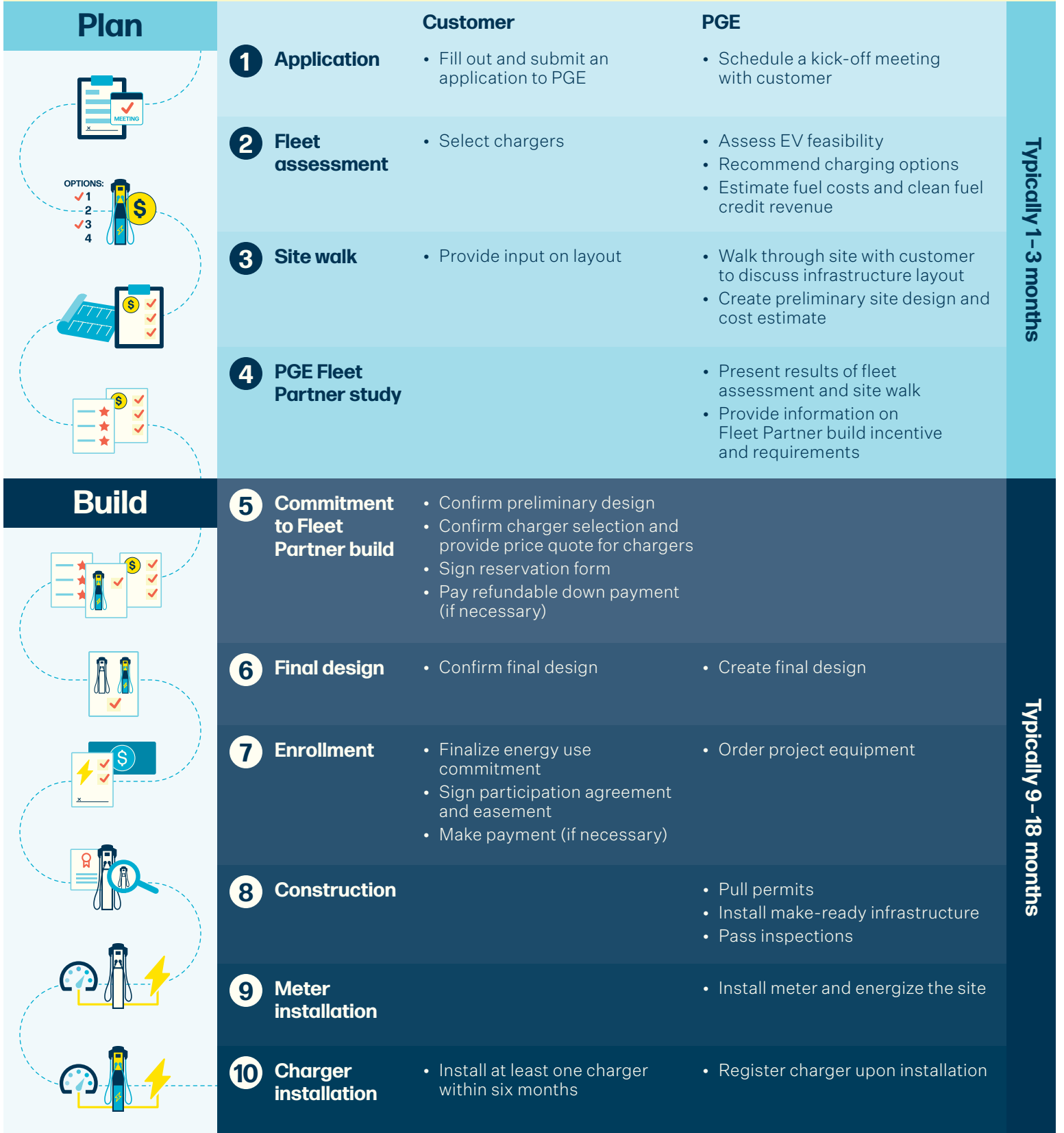




# How it works

We partner with you to plan and build the appropriate charging infrastructure for your fleet. With a custom incentive and turnkey design and construction services, we help you save money and make it easy for you to transition to electric fuel.



## Eligibility and requirements

- Open to nonresidential customers who own or operate a fleet of vehicles (e.g., transit, school, government, commercial, non-profit).
- Charging site(s) must be within the PGE service territory.
- Charging must be on a new cost-of-service meter and add a minimum of 70 kW of new load (usually equivalent to 10 Level 2 ports or 1-2 DC fast chargers).
- Customer must sign participation agreement before construction can begin.
- Customer must purchase, install and register PGE-approved, networked Level 2, or DC fast chargers.
- Customer must keep chargers operational and share charging data with PGE for 10 years.
- Customer must commit to forecasted energy use of the chargers and will reimburse the PGE pro rata share of incentive if commitment is not achieved.
- Customer must sign an easement covering PGE-owned infrastructure.