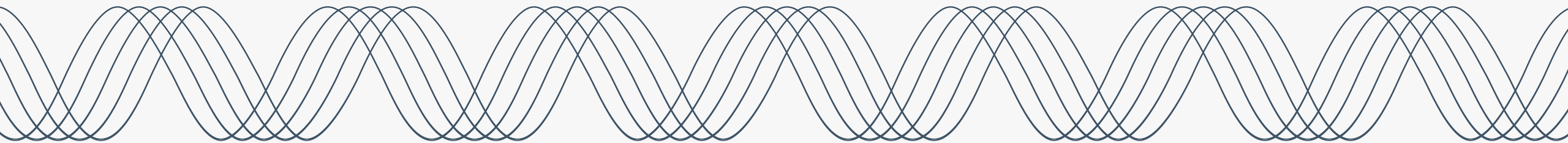


# PGE's CBIAG Meeting #6

## September 27, 2023





# Meeting Participation Tips

- Thank you for joining us today!
- Please join audio by either phone or computer, not both.
- We encourage CBIAG members to turn on your video.
- Please keep your audio on mute when not speaking.
- Observer = you are not a CBIAG member, facilitator or speaker.
- If you experience technical difficulties, please contact program staff at: (823) 535-0731



# AGENDA

---

- Welcome & Introductions
- Discuss / Decide
  - Recording meetings
- PGE Presentation
  - Clean energy efforts
- Group Discussion
  - CBRE's
  - Subcommittees
- Closing & Next Steps
  - Attendance poll for in-person meeting



# Facilitation Style & Group Agreements

- Take care of your personal needs as they come up, let facilitator know if you need to step away
- This is a learning space for everyone
- Participate by sharing your responses in the chat, taking written notes, or by raising your hand to speak
- Welcome diverse perspectives; it's okay to disagree
- Facilitator will call on people to speak. This will be done in a way that centers our equity priority communities and not in first come, first serve
- I will use facilitator's privilege and may need to gently interrupt to have you close out your comments and move the meeting forward
- Move up your talking or move up your listening
- Assume and have good intentions
- You do not need to have perfect/fully formed thoughts to share and discuss your ideas with the group
- Any others you all want to add?

# Meeting Outcomes

Our intention is that by the end of today's meeting, we collectively have

- Come to a decision about recording meetings
- Clarity on next steps with charter
- An understanding of PGE's clean energy efforts
- Initial discussion on CBIAG's involvement in community renewable energy projects (CBREs)
- Insight into CBIAG members availability to attend in-person meeting in October

# Welcome and Introductions



Please state your name and pronouns (if you choose)



Please share what organization(s) you represent, if any



Can you share the best piece of advice you have received?



# Recording CBIAG Meetings

- Proposed approach:
  - Meetings will be recorded moving forward
  - Breakout room discussions will not be recorded
  - Recordings will only be shared with PGE, CBIAG members, the third-party facilitator, and OPUC (upon request)
  - Recordings will not be shared or posted publicly
- Discussion:
  - Share thoughts, additional considerations, and/or concerns
- Decide:
  - Group decision



# Charter Update

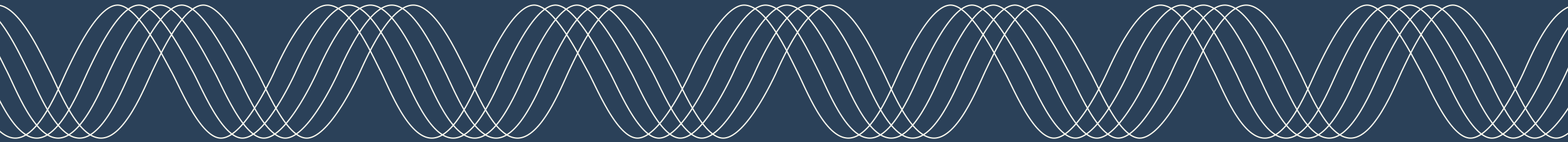
- Reminder:
  - Draft Charter was sent out to CBIAG members in post meeting emails for last two months
  - Please provide feedback by October 18th
  
- Next steps:
  - Any feedback received from members will be incorporated
  - Group will adopt the Charter at October meeting via modified consensus



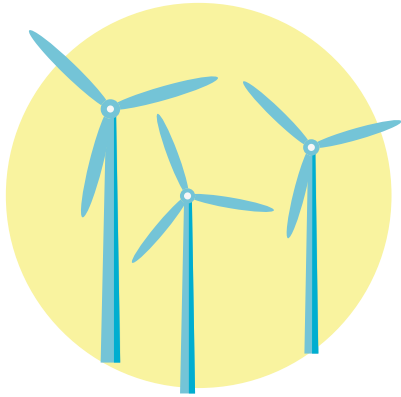


# PGE Clean Energy Overview

**Sam Newman, PGE**

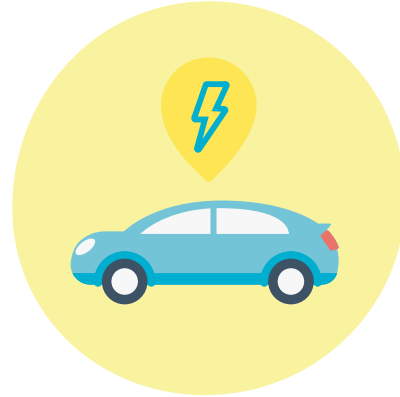


# Together, we have huge goals



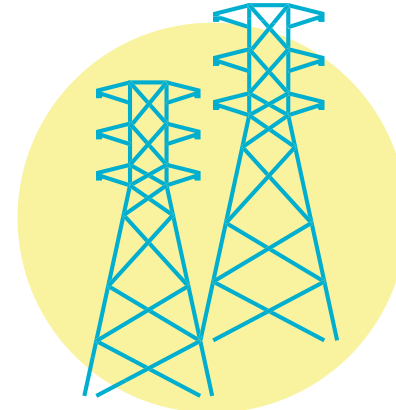
## Decarbonize

- 80% greenhouse gas emissions reduction by 2030
- 90% by 2035
- 100% by 2040



## Electrify

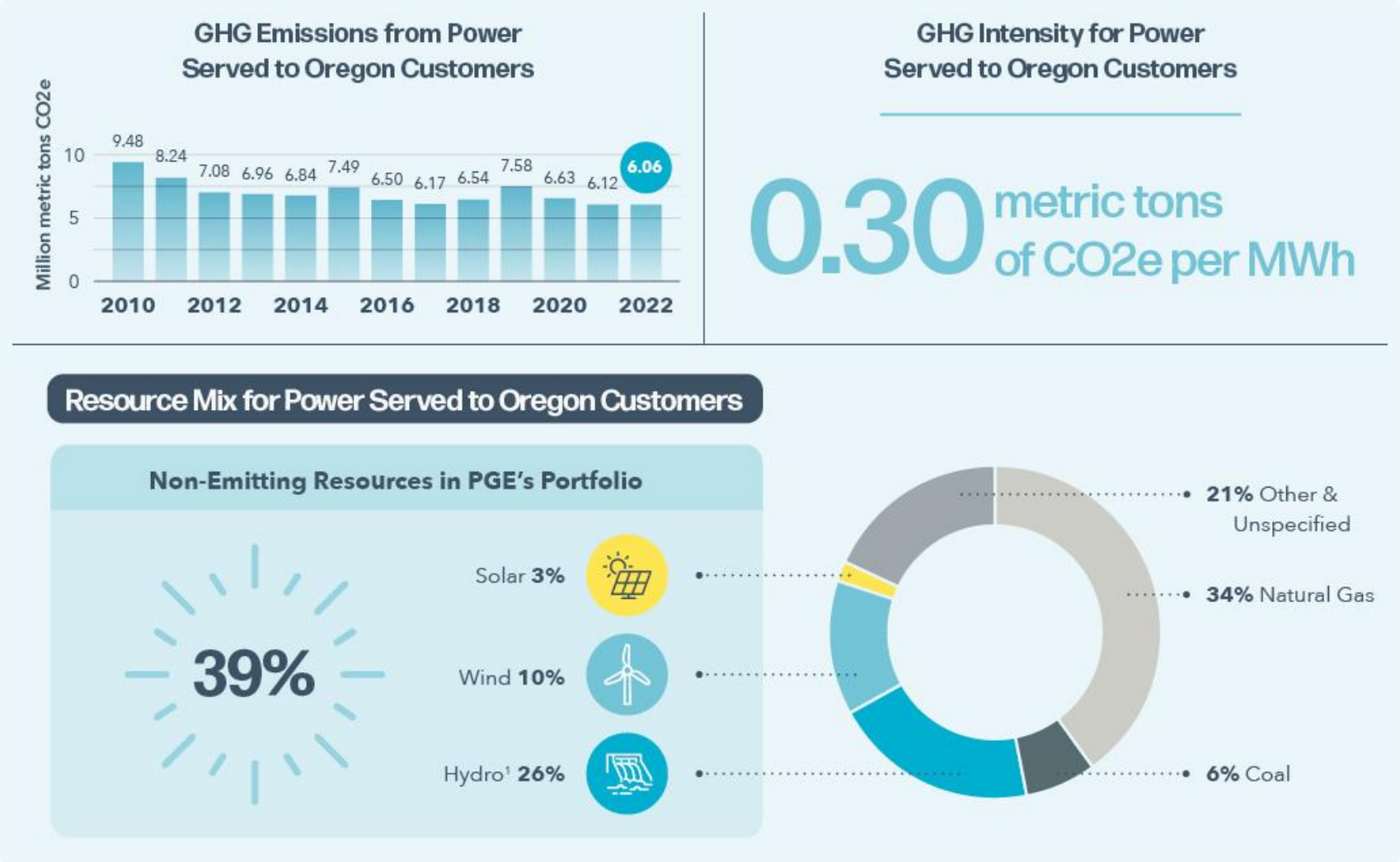
- Electric vehicles
- Distributed solar and battery storage
- Building electrification



## Perform

- Reliability
- Affordability
- Safety

# 2022 Emissions at a glance

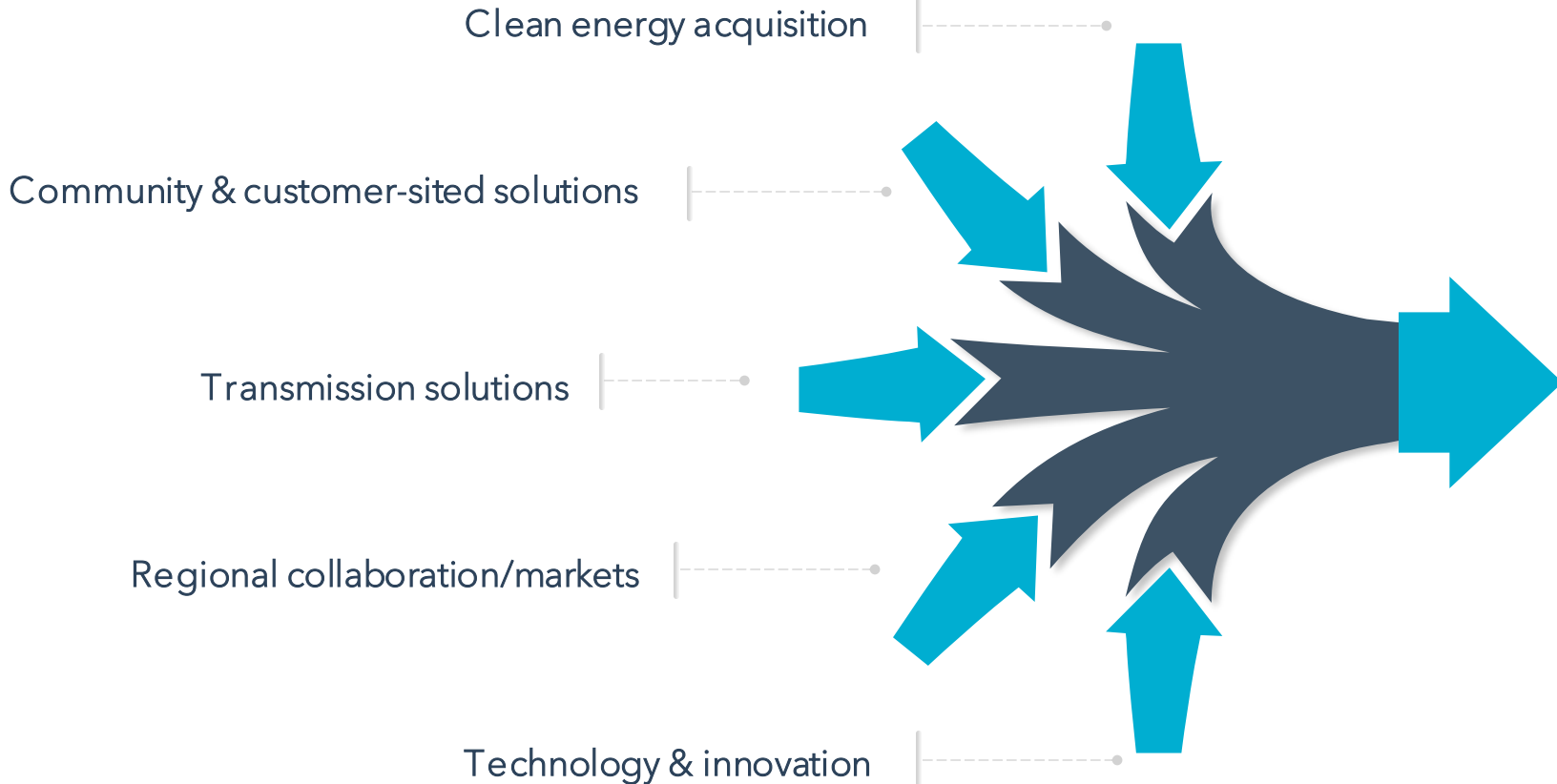


Certain emissions information is subject to review and approval by the ODEQ and Environmental Protection Agency.

# Path to 2030 strategy

Our decarbonization strategy is multi-faceted to support reliable and affordable power

## Enabling strategies



## GHG reductions

- 1 Replace fossil fuels with non-emitting energy capacity resources
- 2 Systematically reduce fossil fuel generation / purchase for retail service
- 3 Actively work with customers to manage their energy wallet, maintain affordability

# Our Path to First Emissions Reduction Target 2030<sup>1</sup>

**8.1**  
MMTCO<sub>2</sub>e  
(2010-2012  
baseline)

## Already pursuing:

- Boardman Closure
- 2021 RFP (+375-500MW)
- Green Future Impact (+500 MW)
- Douglas PPA (+160 MW)
- Hydro Renewals (+224 MW)
- Energy Efficiency (+220 MW)

**6.06**  
MMTCO<sub>2</sub>e  
(2022  
preliminary)

## What we're planning:

- Large scale wind & solar
- Energy storage
- Customer sited storage
- Energy efficiency
- Demand response
- Virtual power plant
- Colstrip exit
- Contract renewals
- Community Based Renewable Energy Resources

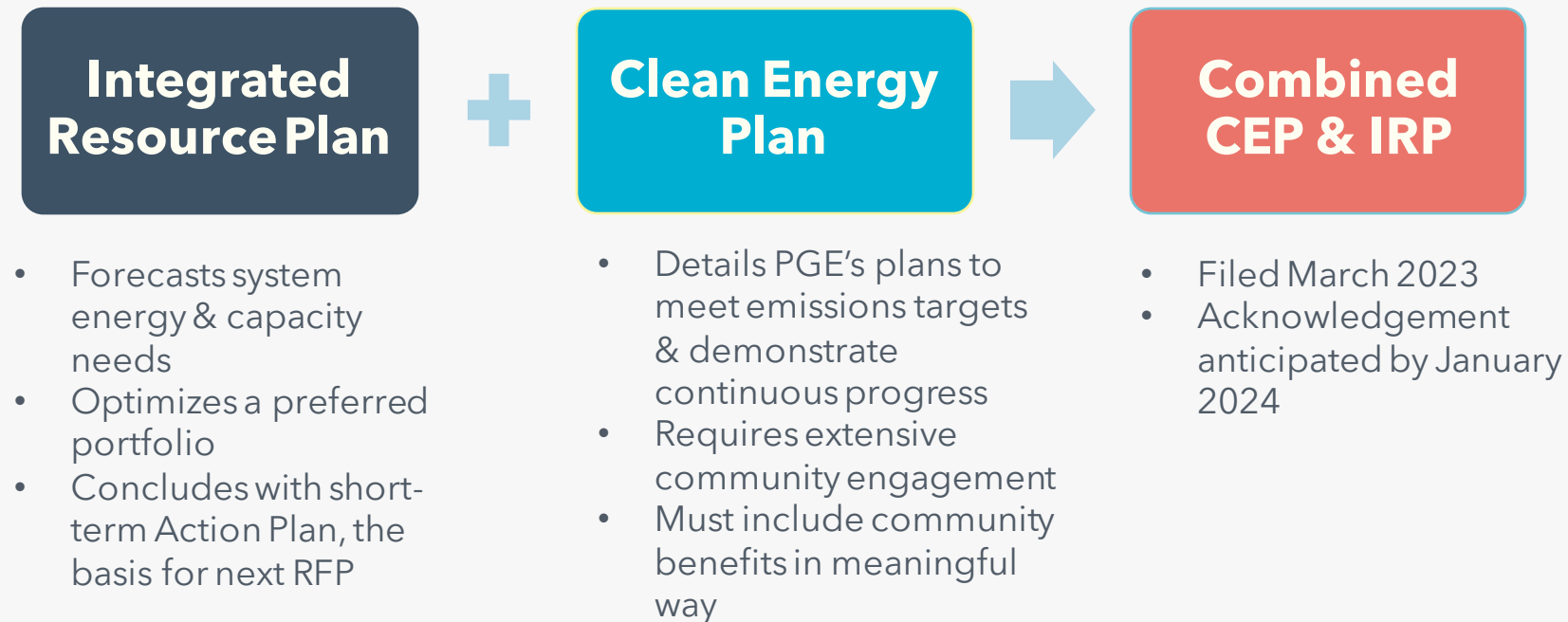
**80%  
reduction  
from baseline  
by 2030**

**1.62**  
MMTCO<sub>2</sub>e  
(2030 target)

1. Retail emissions as reported to ODEQ

# Clean Energy Plan and Integrated Resource Plan

HB 2021 requires a Clean Energy Plan (CEP) which builds off, expands on, and modifies the robust resource planning PGE is required to do for its Integrated Resource Plan (IRP)

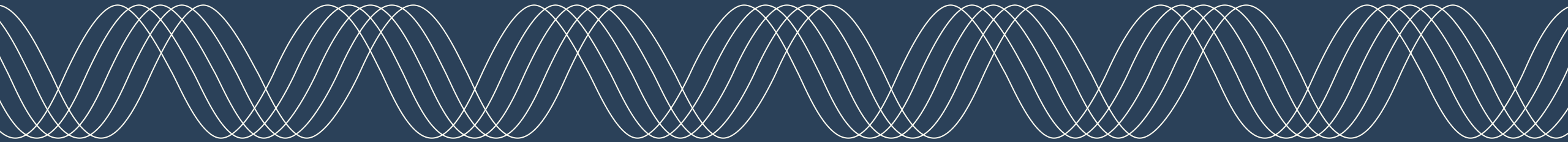


PGE's CEP & IRP must **balance affordability, reliability and decarbonization**



# Community Based Renewable Energy Projects

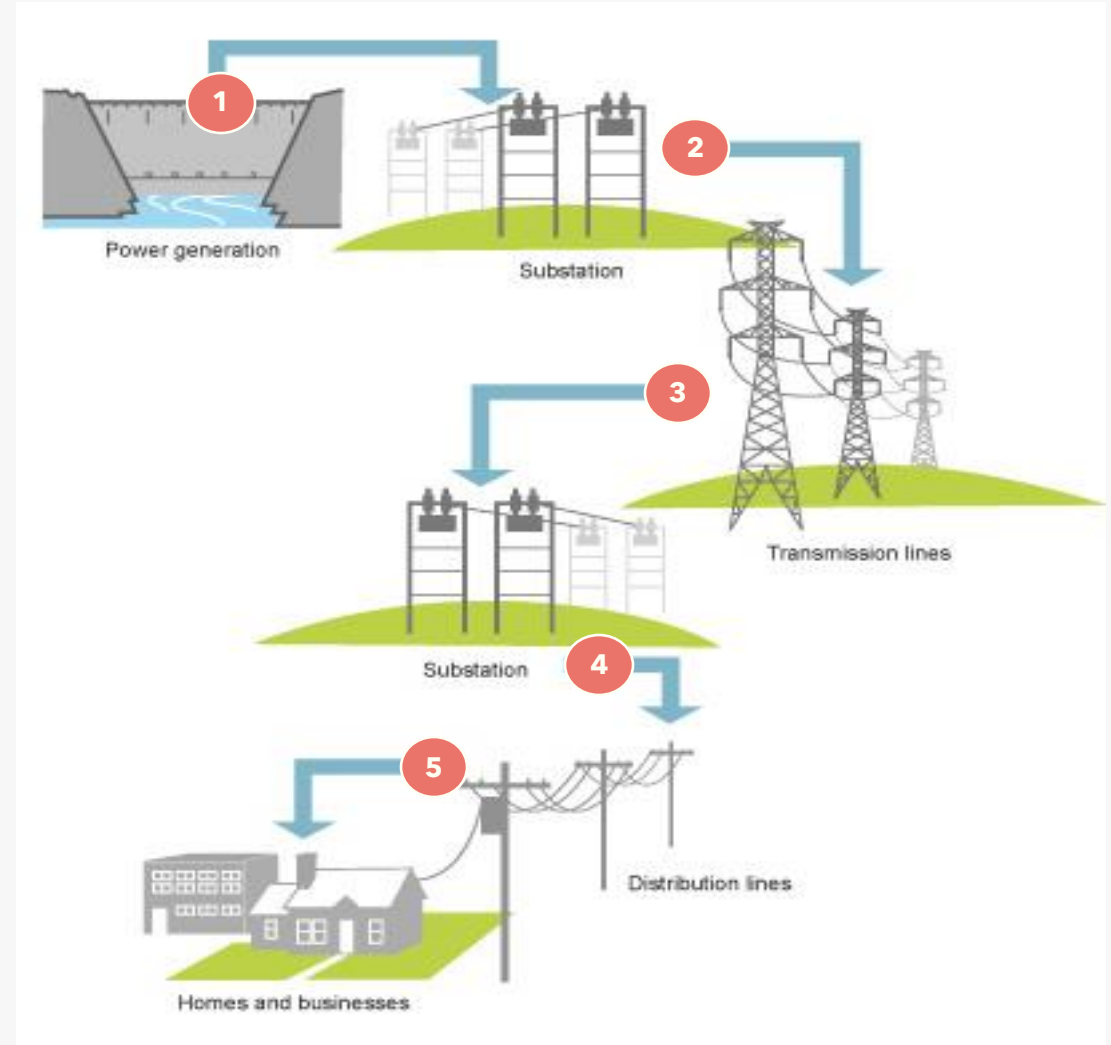
**Jake Goodspeed, PGE**



# How has PGE's system historically generated and delivered energy?



- Generated from hydro, thermal, or renewables
- High voltage for efficiency over long-distance transmission lines
- Lower voltage for safer operation and use in commercial, industrial, and residential areas
- Delivered via distribution lines safely and reliably



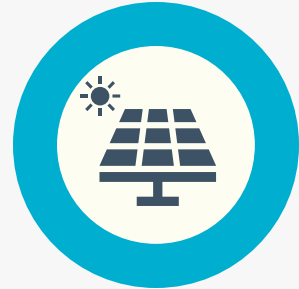


# Community-based renewable energy



## Renewable power

Solar, wind, hydropower, and other non-carbon-emitting sources.



## Close to home

Located in the communities we serve

## Paired with Tangible Benefit

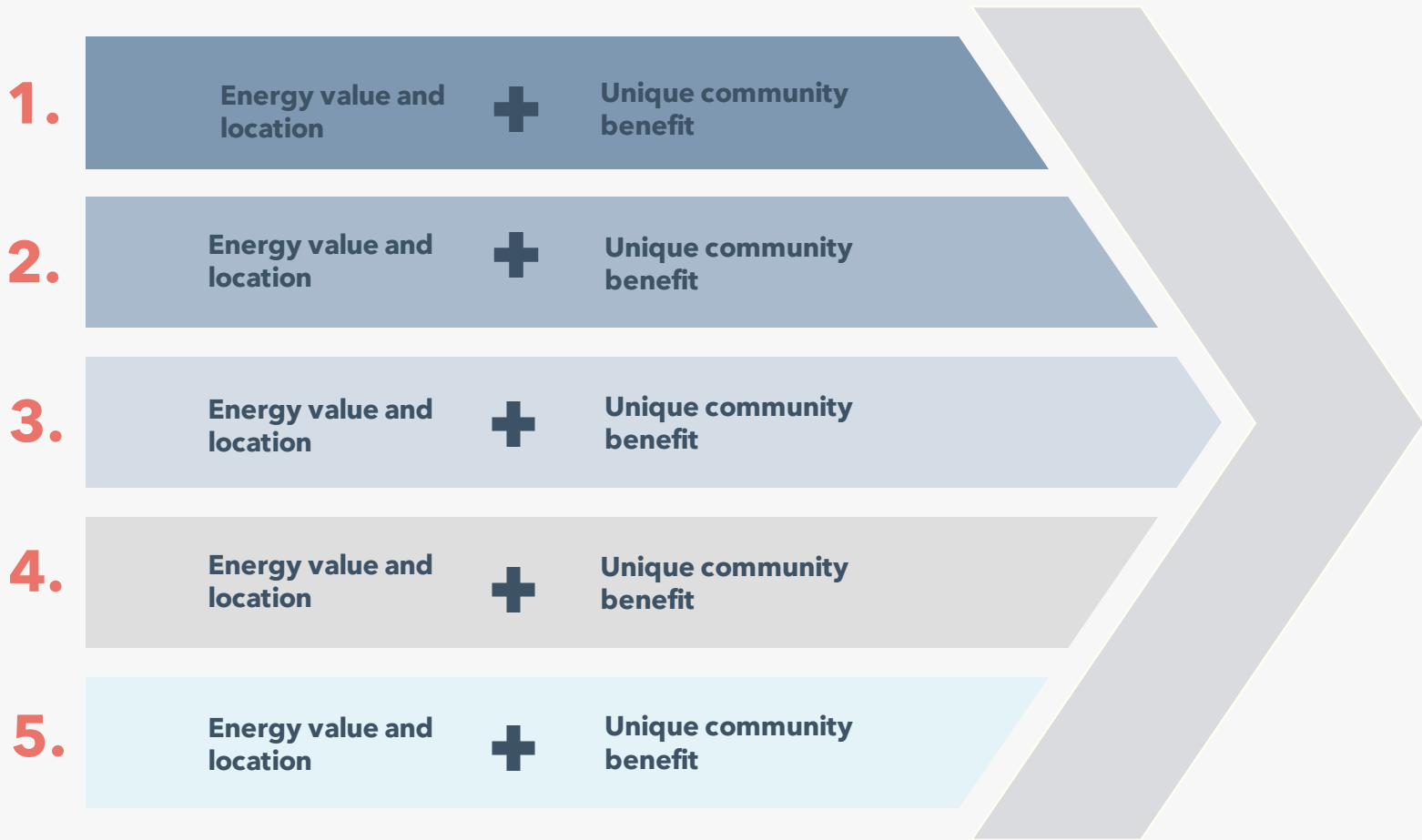
Scholarships, job trainings, ownership benefits, and/or other benefits to be proposed



## Directed by you

Help us decide what to choose - what are the community benefits that are most impactful?

# Community-based renewable energy selection process



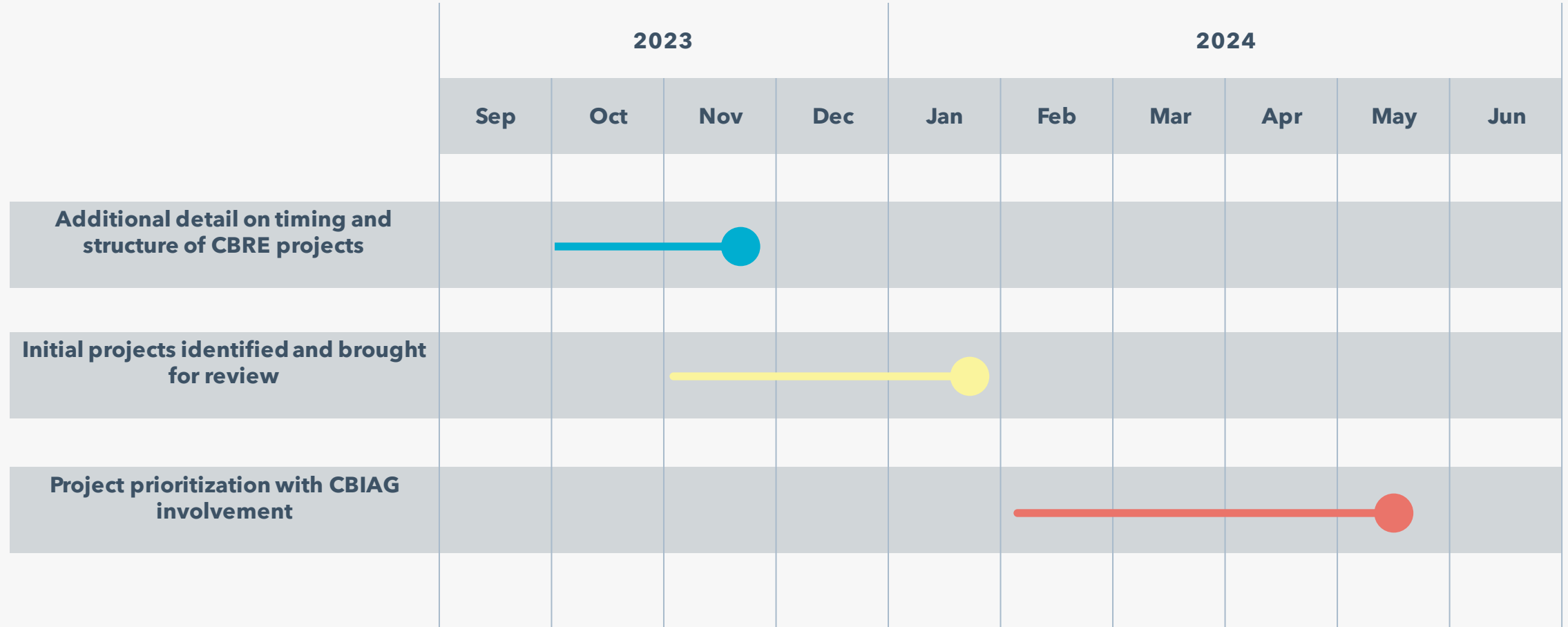
PGE will receive potential opportunities to acquire renewable power paired with community benefits – such as scholarships, job trainings, etc.

We could use help identifying which benefits are preferred.

We could also use this group’s **advice on how we prioritize the overall list** – and how many of the projects we seek to acquire.

# CBRE/CBIAG Timeline

Proposed next steps





# CBRE Discussion

1. What questions or clarifications do you have about CBRE's?
2. What are your thoughts/reactions/to our proposed next steps and the CBIAG's involvement in the process?





# Subcommittee Discussion

- Objectives
  - Operate as a working group (project-specific) that drives specific areas of work to completion
  - All efforts are reported back to CBIAG with status updates, progress, and opportunities to engage broader group
- Logistics
  - Open to CBIAG members
  - Participants compensated
  - Facilitated by PGE staff
- Discussion
  - What are your thoughts about subcommittees and/or your desire to participate?

# Next Steps

What to expect after this meeting  
in preparation for next month's  
meeting

- A high-level recap of the meeting will be sent to CBIAG members
  - Post meeting survey will ask you to self assess your awareness and knowledge around energy and utility concepts as well as invite feedback and suggestions
- Stipends
  - ACH forms by 10/2, processing to begin 10/3
- One-on-one check-ins with CBIAG members
  - Espousal Strategies to collect feedback on participation in CBIAG
- Next meeting
  - Wednesday, October 25th from 10am-12pm PST, in-person (hybrid option)
  - Members *strongly encouraged* to attend in-person
  - Attendance poll



**Thank you**

# Appendix | Definitions

House Bill 2021:

*“Community-based renewable energy” means one or more renewable energy systems that interconnect to utility distribution or transmission assets and may be combined with microgrids, storage systems or demand response measures, or energy-related infrastructure that promotes climate resiliency or other such measures, and that:*

*(a) Provide a direct benefit to a particular community through a community-benefits agreement or direct ownership by a local government, nonprofit community organization or federally recognized Indian tribe;*

*(b) Result in increased resiliency or community stability, local jobs, economic development or direct energy cost savings to families and small businesses.*

CBRE project can be defined as:

A small, less than 20-MW clean energy resource - like solar panels, wind turbines, or batteries - located within and potentially owned by communities, such as nonprofit organizations, municipalities, or school districts).