

# Public Safety Power Shutoff (PSPS)



**Safety is our top priority.** A PSPS is a planned power outage that we use to help protect our communities from the risk of wildfire. When hazardous conditions such as high winds, low humidity or extreme heat increase the chances of fire, we may need to turn off power. A PSPS is a last resort safety measure during extreme conditions.

## What can lead PGE to call a PSPS?

### **Wind speed and gusts**

High winds can down powerlines and spread sparks across dry grass, brush and trees.

### **Temperature and humidity**

Hot, dry air dries out trees and brush, which raises the risk of fire.

### **Vegetation moisture**

We monitor moisture levels in trees and brush across our service area.

### **Field crew observations**

Our field crews share real-time updates, along with information from weather models and fire agencies.

## How long can a PSPS outage last?

A PSPS can last from a few hours to several days. The length depends on how long hazardous conditions last and whether we find any equipment damage after the event. We won't turn the power back on until:

### **Weather conditions are safe enough**

High winds and low humidity need to pass before our crew can safely check the powerlines.

### **Repairs are made**

We fix any damaged equipment before turning the power back on.

### **Line-by-line inspection**

We check every powerline in the shutoff area for damage from debris or other hazards.

### **Power is restored**

We turn the power back on as soon as it's safe and confirm everything is working properly.

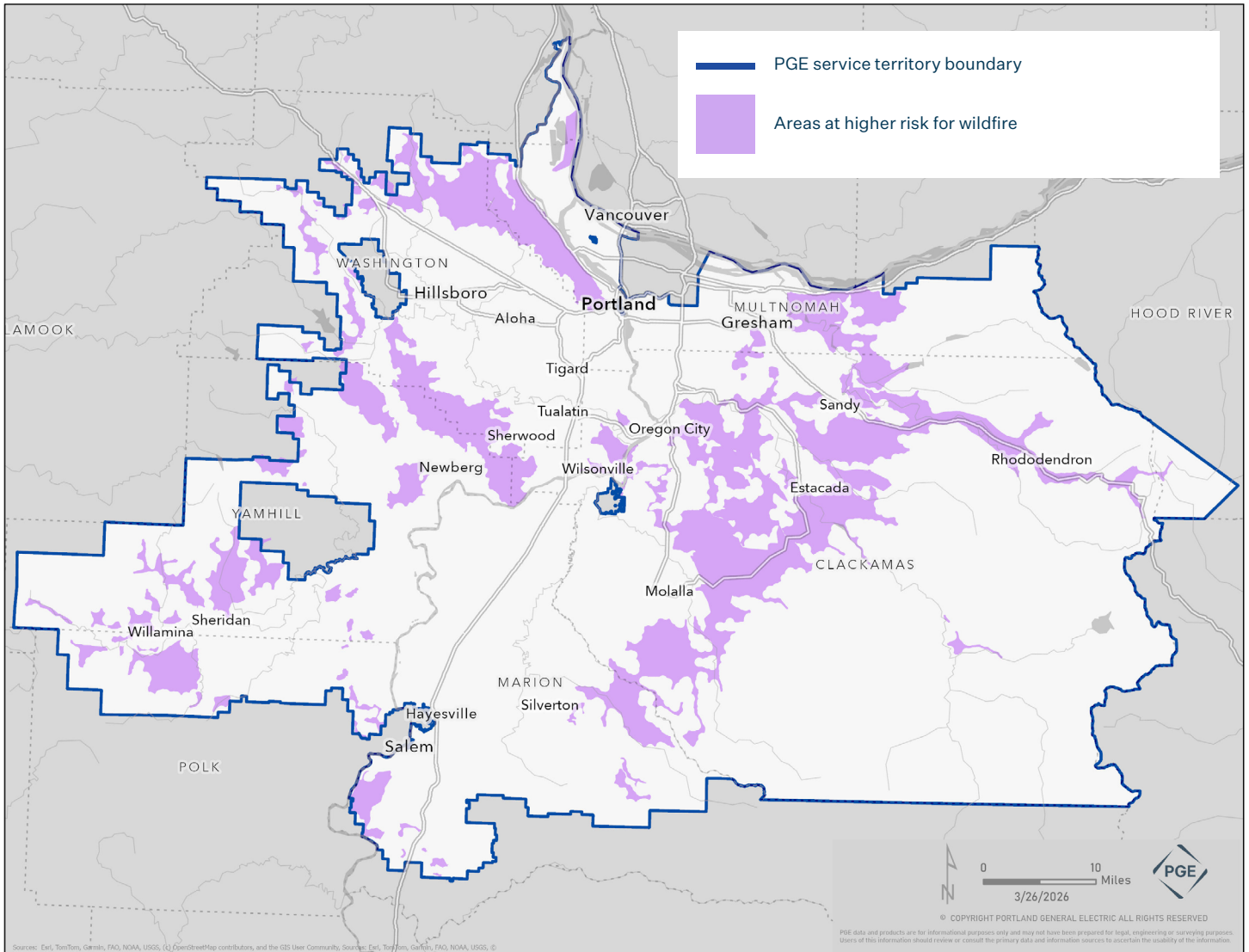
## What you can expect:



Check [portlandgeneral.com/fireprep](http://portlandgeneral.com/fireprep) for the most up-to-date information.



# Areas at greater risk for wildfire are more likely to experience a Public Safety Power Shutoff (PSPS)



This map is for planning purposes only and is not intended to be used by external parties for any other purpose. It will be reassessed annually.

- Areas with higher wildfire risk are more likely to have a PSPS called.
- A PSPS can happen anywhere in our service area if hazardous conditions occur, so please be prepared.



To learn more, visit our Public Safety Power Shutoff page.  
[portlandgeneral.com/fireprep](http://portlandgeneral.com/fireprep)