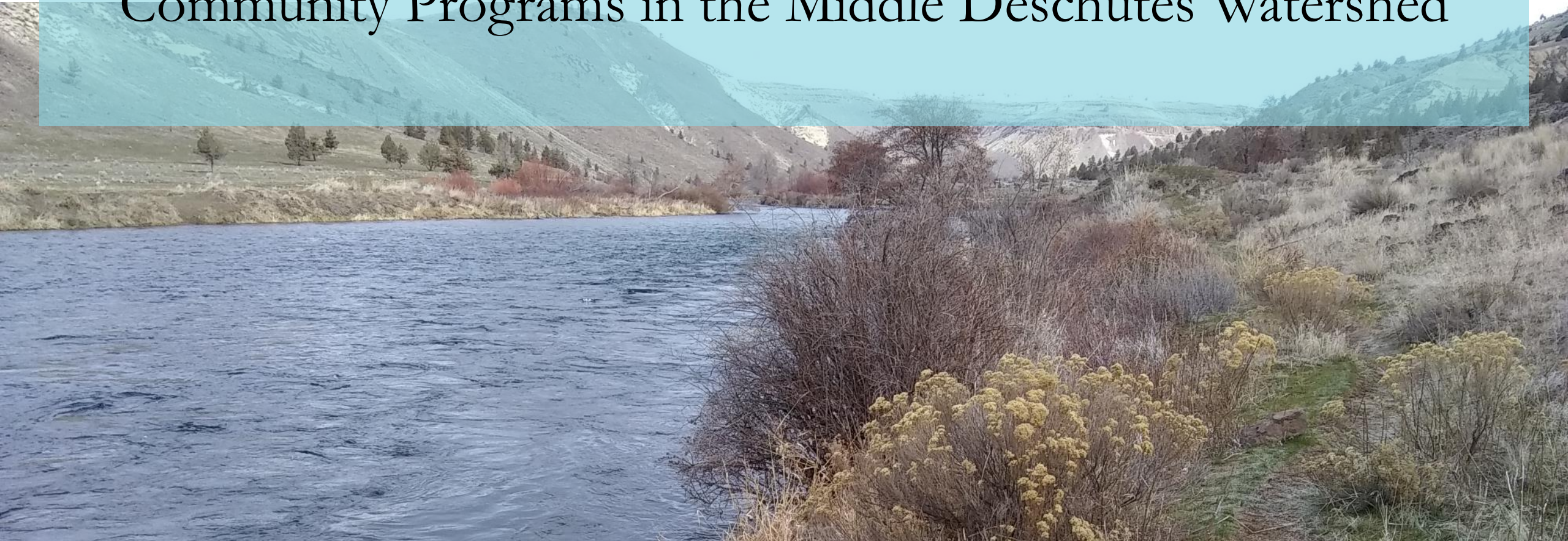


# MIDDLE DESCHUTES

## WATERSHED COUNCIL

*Involving local people to enhance and protect the natural resources of the Middle Deschutes Watershed*

# Community Programs in the Middle Deschutes Watershed



Middle Deschutes Watershed Council





# Presentation Outline:

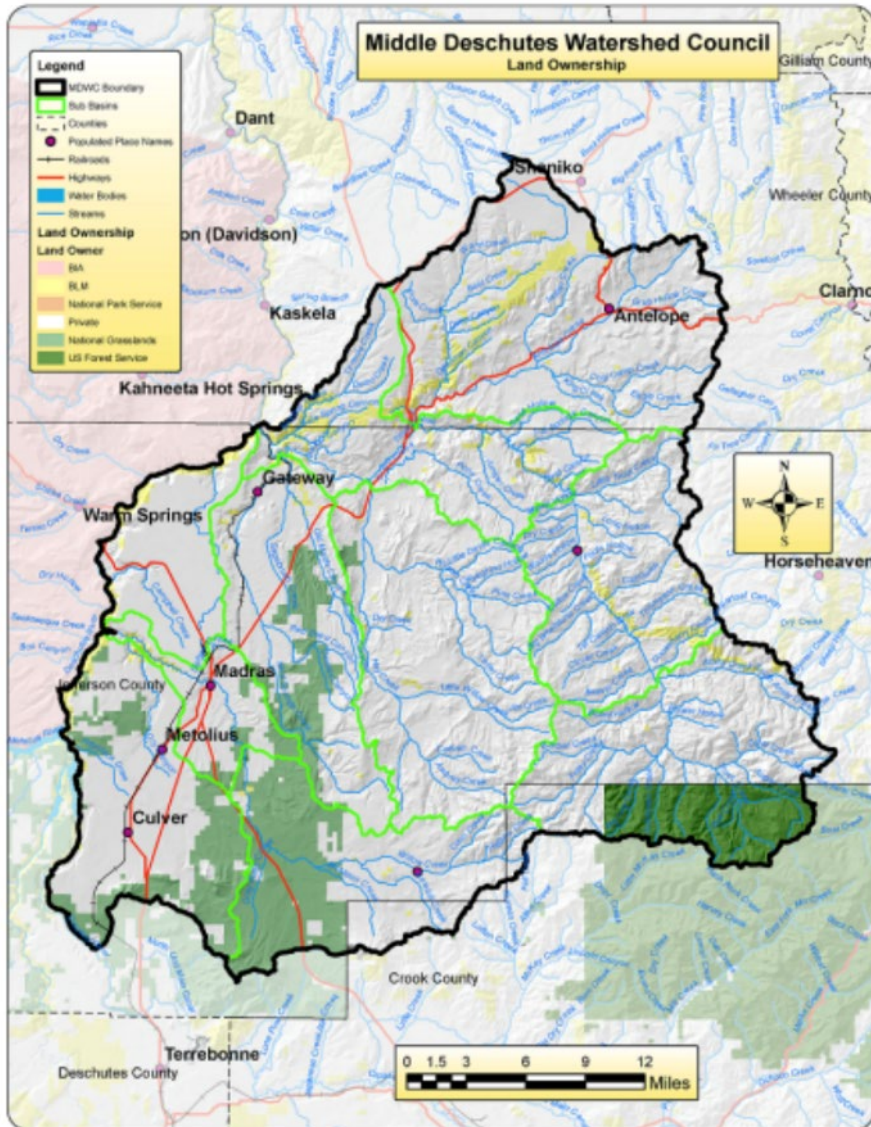
- About MDWC
- Educational programming
- Volunteer Engagement and Community Outreach



Middle Deschutes Watershed Council



# About us: Middle Deschutes Watershed Council



The Middle Deschutes Watershed Council (MDWC) is a community-based organization representing a broad range of stakeholders who live, work and recreate in the Middle Deschutes Watershed.

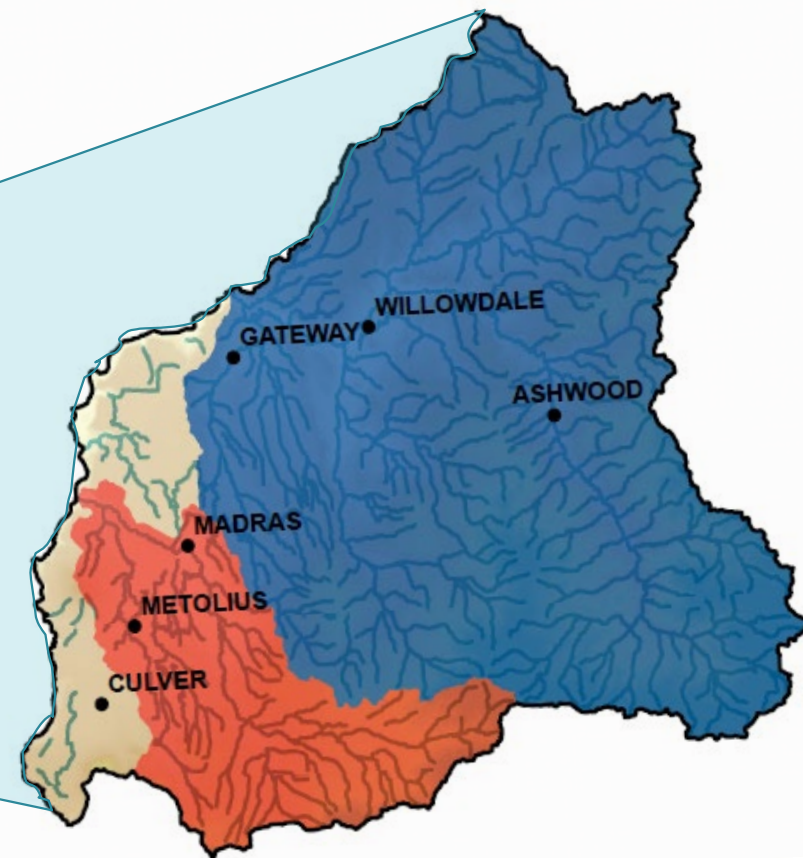
- Capacity: two 0.5 FTE staff (coordinator and program assistant) and a nine member board of directors
- Housed within the USDA service center in Redmond, OR, work closely with Jefferson County SWCD, NRCS, FSA
- MDWC focuses its activities on ecological restoration, environmental education, community engagement and water quality monitoring.





# The Middle Deschutes Watershed

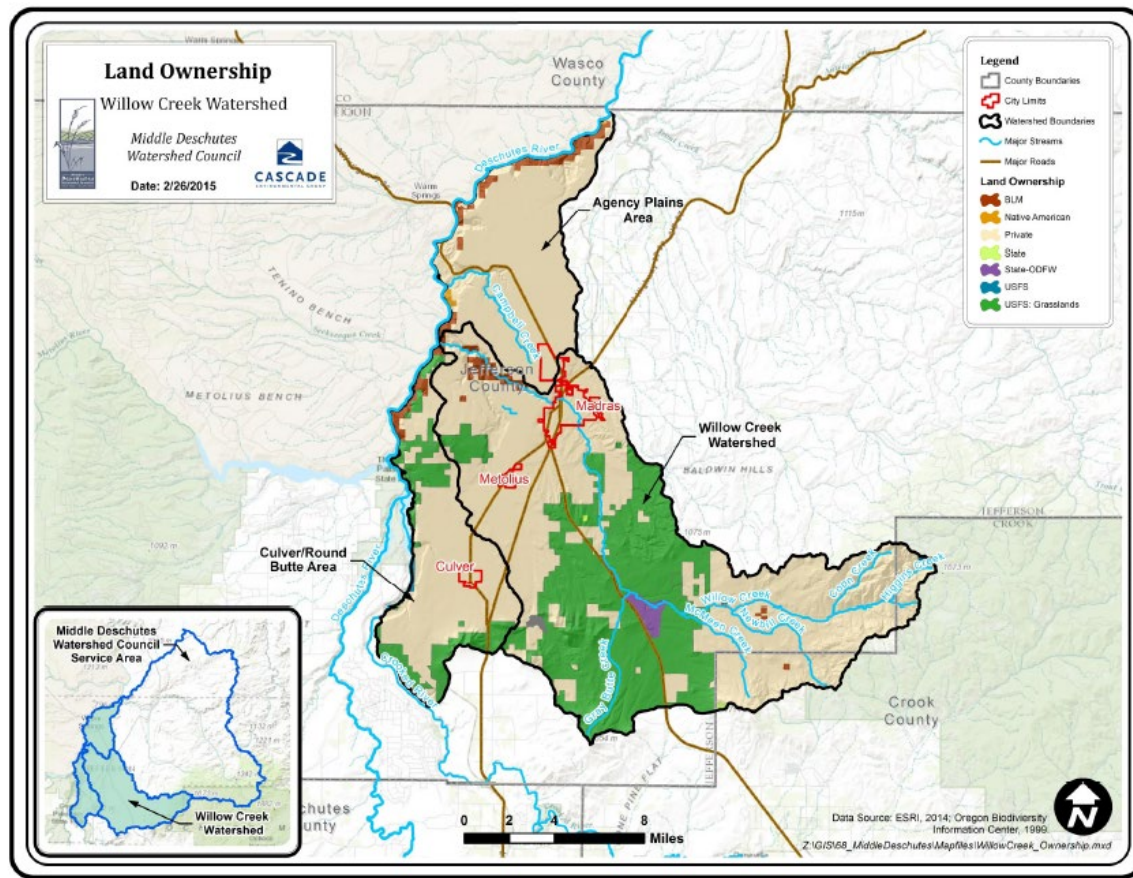
- The Middle Deschutes watershed encompasses the Willow Creek and Trout Creek watersheds to the East side of the Deschutes river between Lake Billy Chinook and the mouth of Trout Creek.





# The Willow Creek Watershed

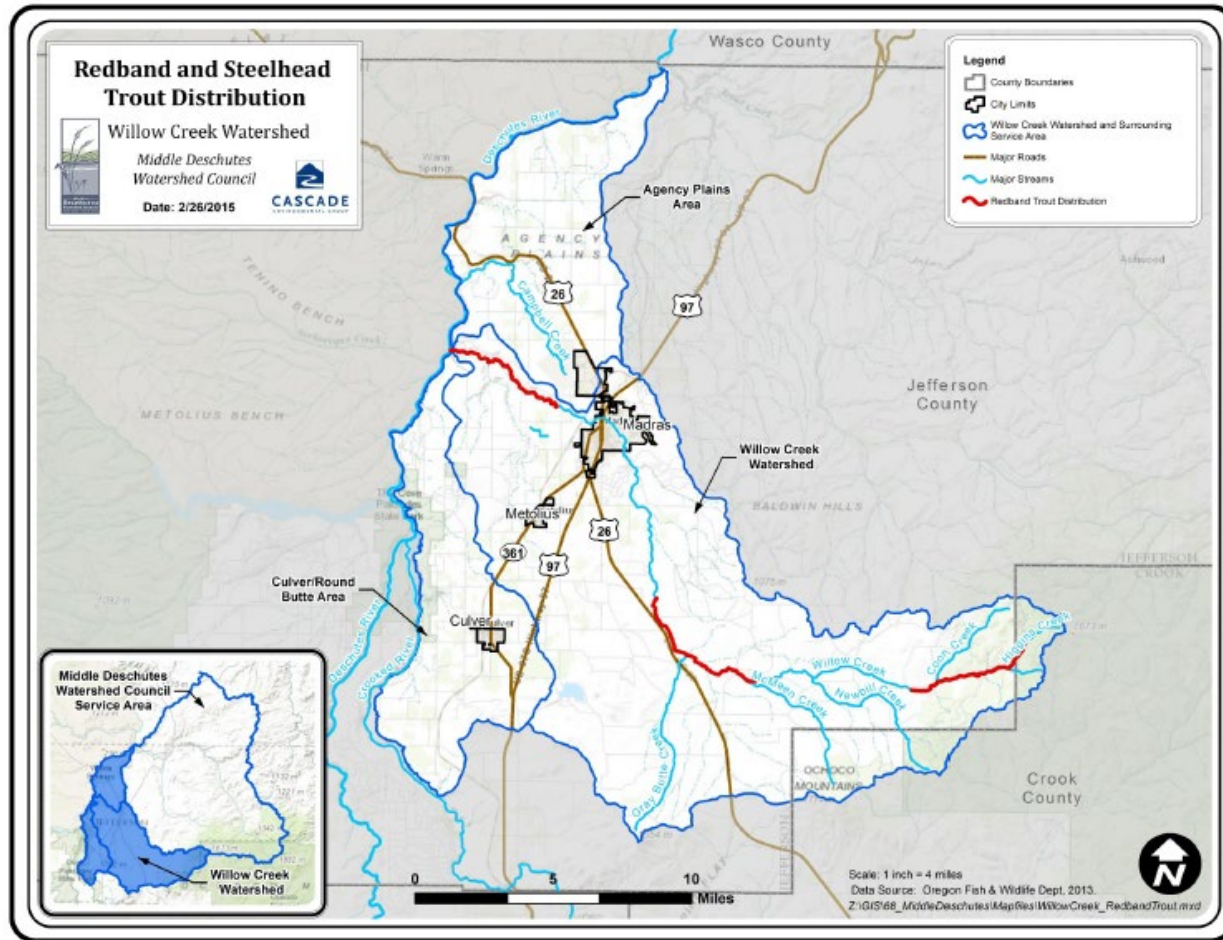
- 66.5% private ownership
- 27.8% USFS
- 2.6% BLM





# The Willow Creek Watershed

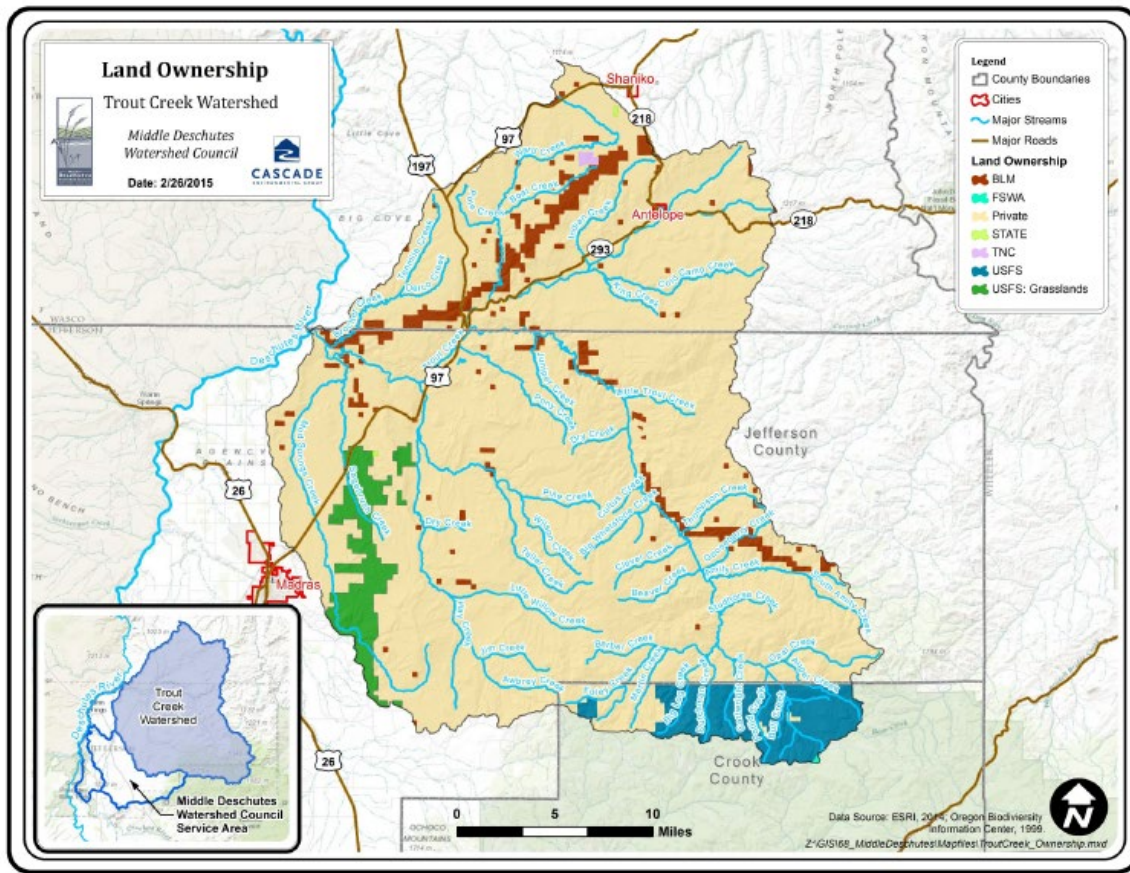
## Redband Trout Distribution





# The Trout Creek Watershed

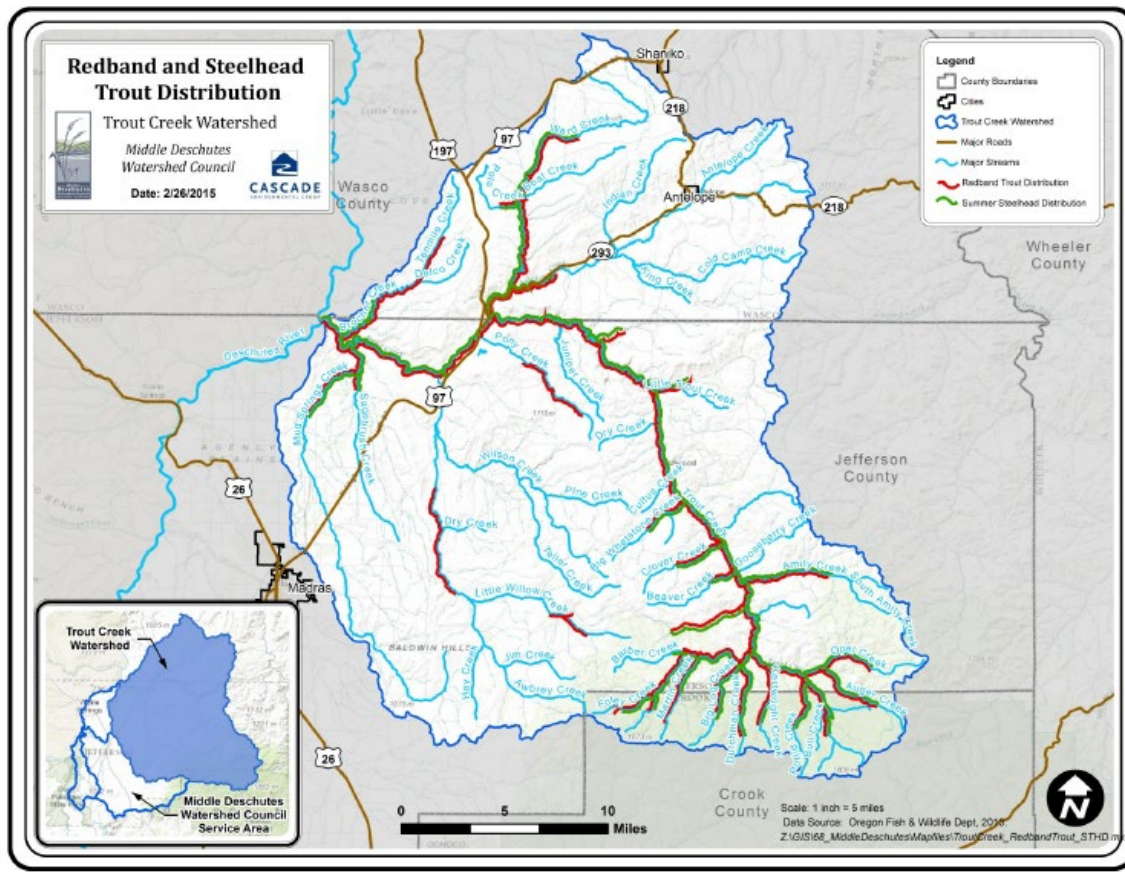
- 87.9% private ownership
- 7.8% USFS
- 4.1% BLM





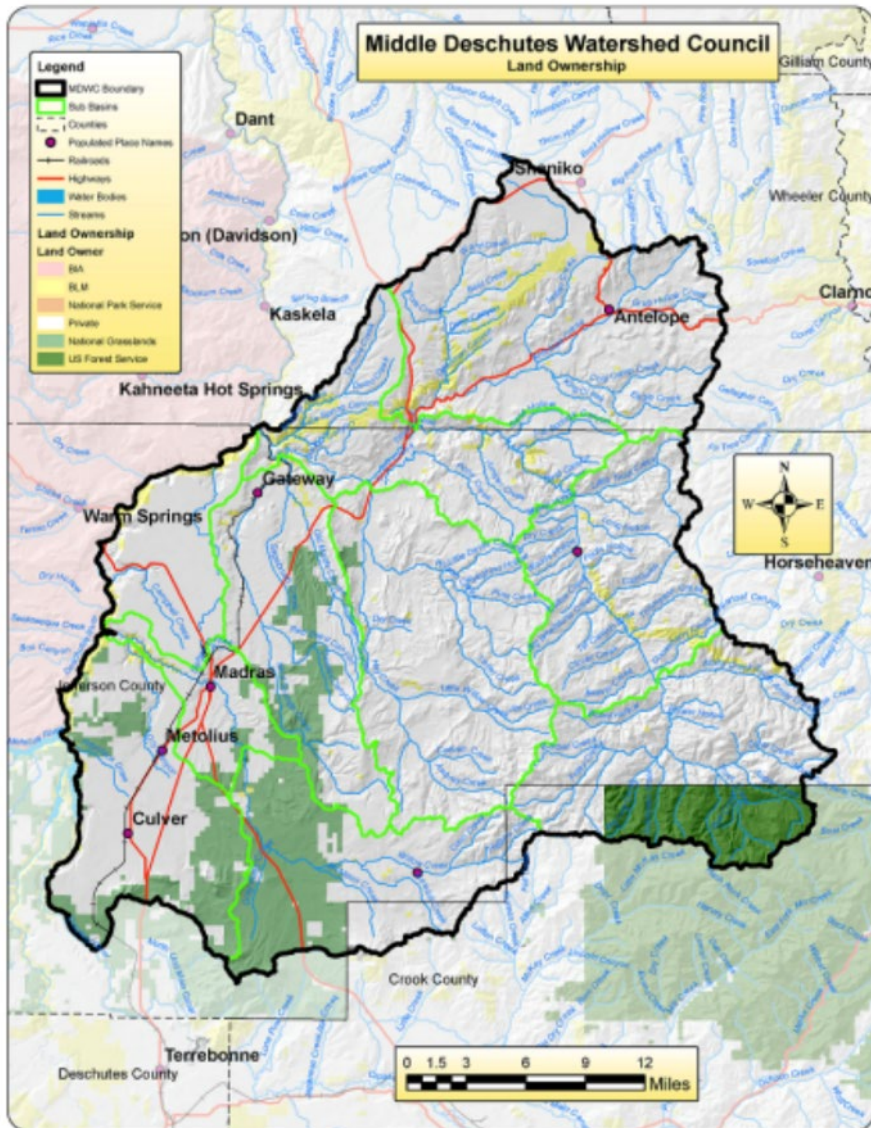
# The Trout Creek Watershed

## Redband trout and Mid Columbia Steelhead Distribution





# Jefferson County: Demographics



		Jefferson	Deschutes
Population			
	Total population	24, 192	191,996
	Per square mile	12.2	52.3
Race			
	White alone	60.2%	87.1%
	American Indian	18.8%	1.1%
	Hispanic or Latino	20.2%	8.1%
Education and Economy			
	Free or reduced lunch	75.7%	39.1%
	Persons in poverty	17.2%	9.7%
	Bachelor's degree or higher	16.9%	33.7%



# Educational Programming: Jefferson County 509-J schools



## Schools we work with:

- Madras, Metolius, Culver, Warm Springs and Ashwood

## Mission:

Deliver engaging and diverse environmental education to Jefferson County youth to help develop an awareness of place and stewardship of local watersheds.

## Programs:

### Youth Watershed Education and Stewardship Program

- Full day, field-based education

### River Lab Afterschool Program

- Multi-week afterschool programming, classroom and field-based





# Educational Programming: Youth Watershed Education and Stewardship Program



## Programs:

### Youth Watershed Education and Stewardship Program

- Grade levels: 3<sup>rd</sup> – 5<sup>th</sup> and 9<sup>th</sup> – 12<sup>th</sup>
- Each class receives one, 1 hour classroom visit followed by a 5 – 6 hour field day
- Students rotate through 4 stations centered around a watershed ecology theme, (e.g. Deschutes river community ecology, salmonid habitat and lifecycle, riparian food webs, etc.)
- Rely heavily on volunteer educators and collaborative partnerships to leverage grant funds
- Low educator to student ratios, average 1 : 7





# Educational Programming: Youth Watershed Education and Stewardship Program





## Educational Programming: Youth Watershed Education and Stewardship Program





# Educational Programming: Youth Watershed Education and Stewardship Program





# Educational Programming: Youth Watershed Education and Stewardship Program





# Educational Programming: Youth Watershed Education and Stewardship Program





# Educational Programming: Youth Watershed Education and Stewardship Program





# Educational Programming: Youth Watershed Education and Stewardship Program





# Educational Programming: River Lab After School Program

## River Lab After School Program



- Grade levels: 2<sup>nd</sup> – 8<sup>th</sup>
- Six week after school session
- Interactive science, language and art-based lessons in watershed ecology, salmon life cycle, riparian plants, macro invertebrates and hydrology
- In partnership with the 21<sup>st</sup> century community learning center in Jefferson County



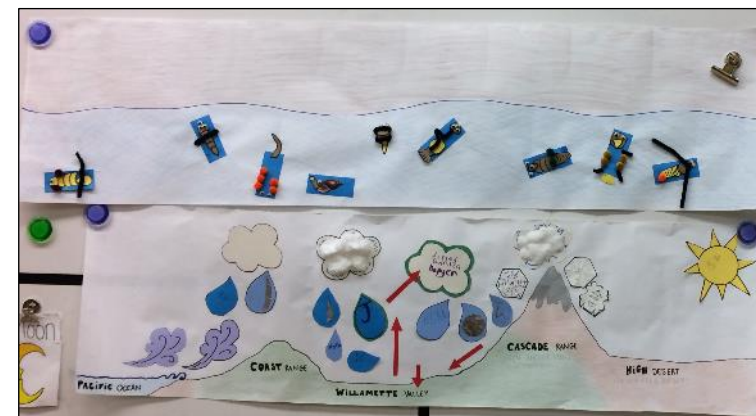
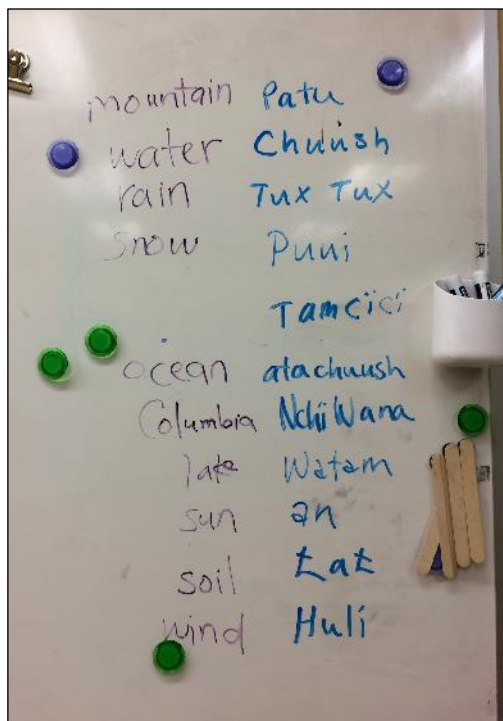


## Educational Programming: River Lab After School Program





## Educational Programming: River Lab After School Program





# Volunteer Engagement and Community Outreach



## Volunteer Events

- Adopt-a-highway and adopt-a-trail
- Stream cleanups
- Stewardship planting and weed pull events

## Community Outreach

- Film screenings
- Community informational and educational events
- Watershed tours and Landowner workshops



# Volunteer Engagement and Community Outreach





A wide-angle landscape photograph of a deep, rugged canyon. A river flows through the center of the canyon, its water appearing dark blue. The canyon walls are steep and rocky, with sparse vegetation. The foreground is a grassy slope with dry, yellowish grass. The sun is high in the sky, creating a strong lens flare effect across the image. The word "Questions?" is overlaid in white text in the center of the image.

Questions?