

Updates on PGE's West Linn waterfront property

March 2020

As we shared in our open houses and online in 2019, the conditions of the buildings on the island portion of PGE's property varied widely. One of the buildings, Mill J, had been unused since the late 1960's and presented a serious safety risk.

In October 2019, removal of Mill J began to prevent an unplanned collapse. We protected Mill J's stone foundation during the demolition and it remains in place.

We take environmental and cultural stewardship seriously. In addition to preserving

The deconstruction by hand was completed in March 2020. In addition to preserving the stone foundation and documenting the building before and after deconstruction, PGE is providing archival-quality photos to the Oregon Historical Society, the University of Oregon and the State Historic Preservation Office.



Mill J interior



Mill J roof



Mill J before demolition



Mill J foundation after demolition

October 2021

Mill A sits at the southern tip of the island that is home to PGE's T.W. Sullivan hydropower plant. It is a rambling series of structures that are built on top of the Willamette Falls dam, with multiple rooflines covering roughly 55,000 square feet.

Mill A has not been used or maintained for over 30 years. When of the West Linn Paper Company closed in late 2018, PGE began sitewide assessments to understand conditions and future possibilities for the property. After the first phase of analysis in 2019, more detailed structural analysis was completed, which identified conditions that require urgent attention to reduce environmental (asbestos, lead paint and biohazards) and immediate structural risks. Addressing these risks may include environmental remediation, demolition and/or selective repair limited to mitigating collapse.

As a steward of the environmental, historic and cultural aspects of Mill A, PGE will host several workshops for the Federal Energy Regulatory Committee (FERC) Cultural Working Group and representatives of historic preservation groups that are focused on this area. Stakeholder input will help inform PGE's plans to mitigate the impact of remediating hazards under the National Historic Preservation Act and our FERC license.

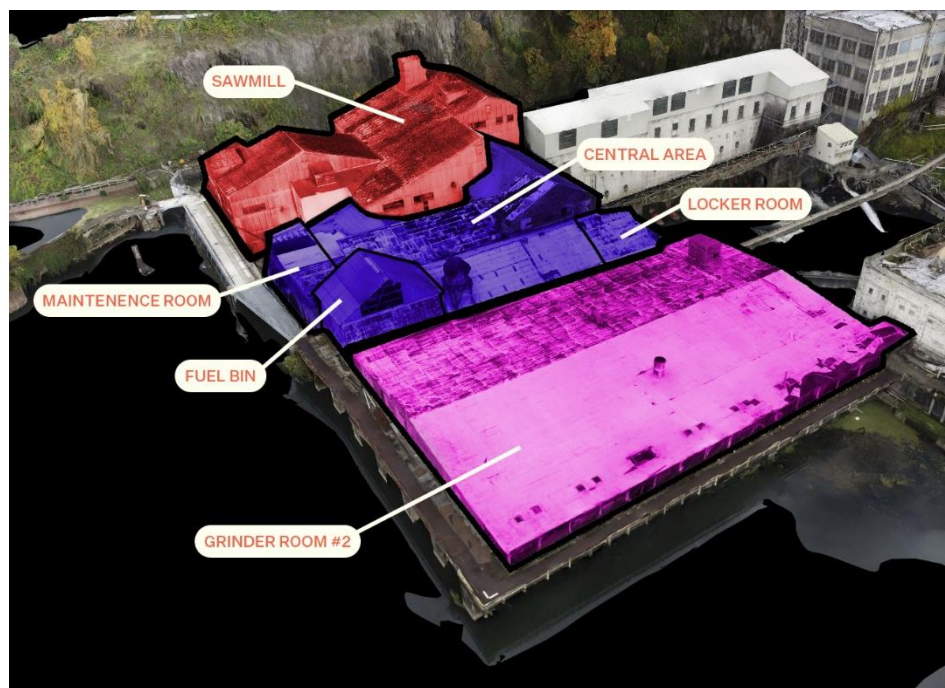
The values that will guide this work include:

- The safety of people and the environment around Mill A.
- Fulfilling FERC hydropower license obligations, including Section 106 of the National Historic Preservation Act.
- Capturing the stories of Mill A as an important part of Oregon history.
- Including historical and cultural aspects of Mill A in plans for remediating the hazards.

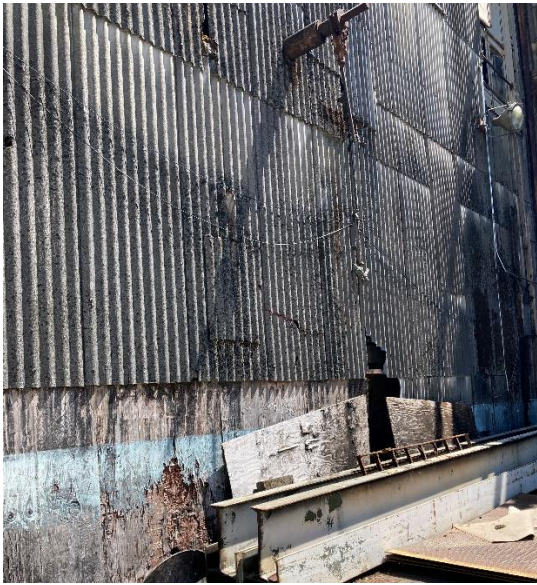
PGE will share the outcomes of those workshops with the West Linn community in the months ahead.



An overview of Mill A and Moore Island



The Mill A complex



Transite (asbestos) siding



Disparate rooflines



Rooflines from the East



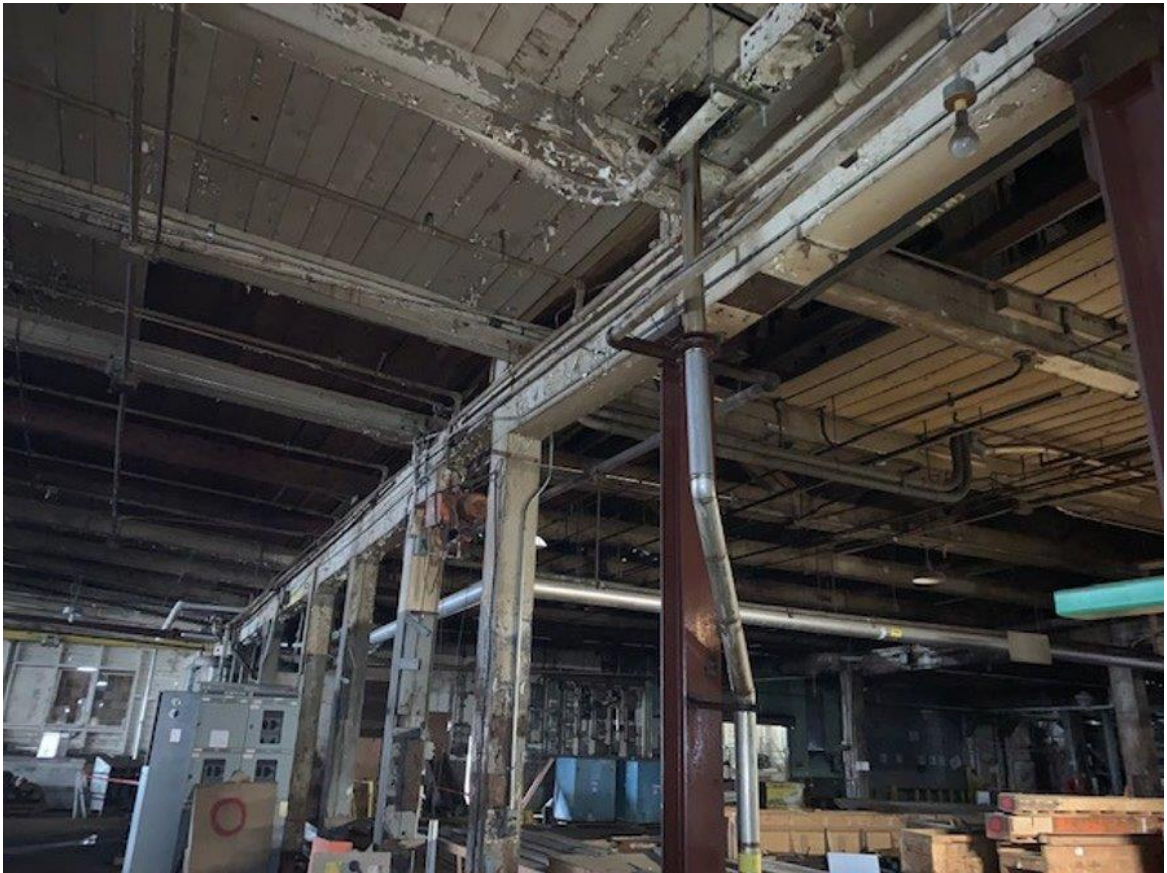
Decayed roofing





Decayed siding





Structural Hazards





Biohazards



Lead Paint