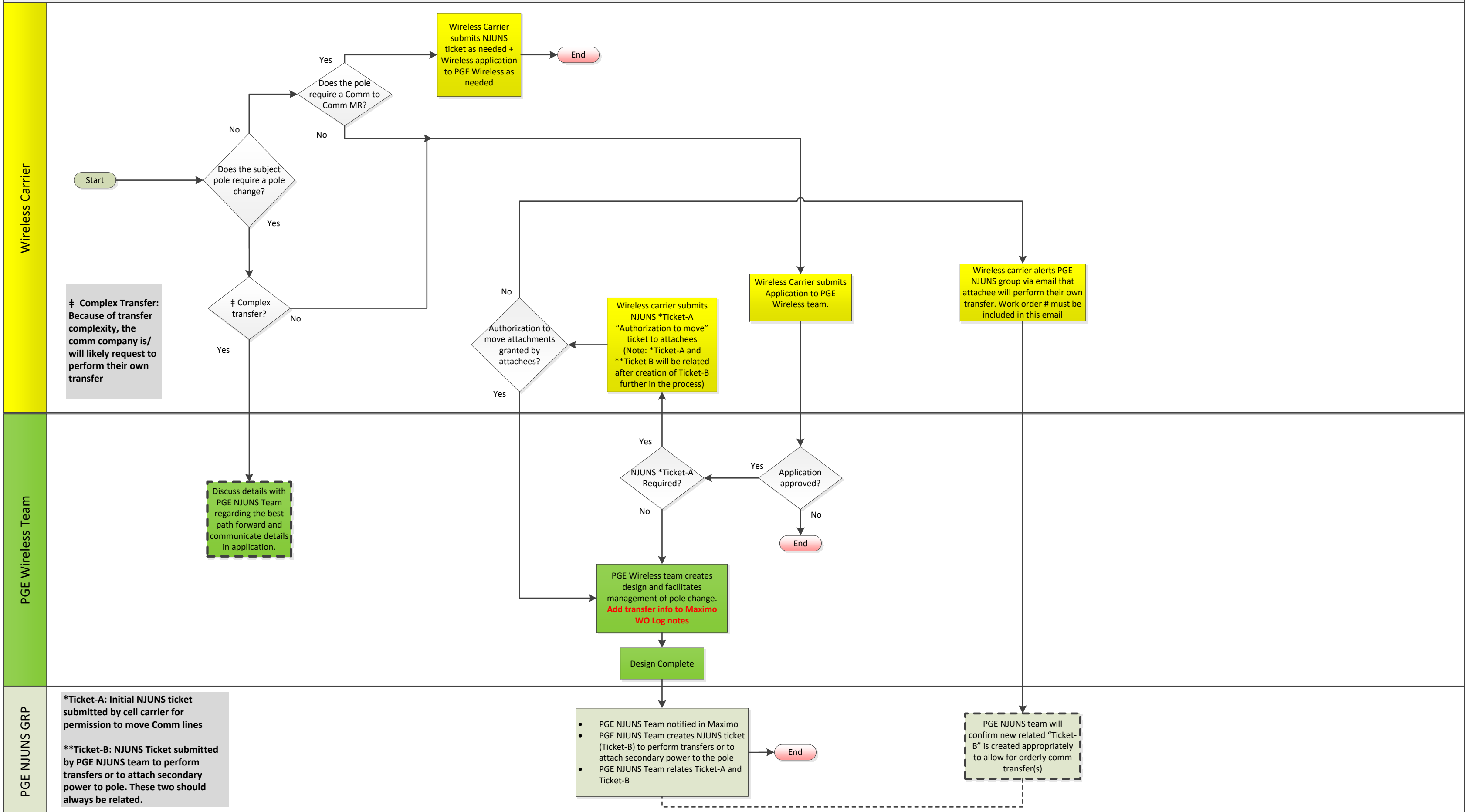


PGE Owned/Foreign Owned NJUNS Transfer Process (Wireless)



‡ **Complex Transfer:** Because of transfer complexity, the comm company is/ will likely request to perform their own transfer

Discuss details with PGE NJUNS Team regarding the best path forward and communicate details in application.

***Ticket-A:** Initial NJUNS ticket submitted by cell carrier for permission to move Comm lines
****Ticket-B:** NJUNS Ticket submitted by PGE NJUNS team to perform transfers or to attach secondary power to pole. These two should always be related.

- PGE NJUNS Team notified in Maximo
- PGE NJUNS Team creates NJUNS ticket (Ticket-B) to perform transfers or to attach secondary power to the pole
- PGE NJUNS Team relates Ticket-A and Ticket-B

End

PGE NJUNS team will confirm new related "Ticket-B" is created appropriately to allow for orderly comm transfer(s)