

Summit-Summit 13 Mt. Hood Undergrounding Project

Placing existing overhead distribution lines underground



PROJECT OVERVIEW

In May 2026, Portland General Electric (PGE) will begin a two-year project to move approximately seven miles of overhead power lines underground along US Highway 26 near Government Camp and on Mt. Hood. The work will be broken into segments with half completed during the summer of 2026 and the remainder completed in summer, 2027.

WHY IS PGE DOING THIS?

PGE works proactively and comprehensively year-round across our service area to help prevent wildfires. That includes a deliberate and targeted conversion of overhead power lines to underground power lines in areas of higher risk. The project will strengthen the electrical system that serves homes and businesses around the town of Government Camp, helping to improve reliability and reduce the frequency and duration of power outages while also helping to prevent wildfire.

WHAT TO EXPECT, WHERE, AND WHEN

Converting existing overhead power lines to underground lines is primarily done with heavy equipment that minimizes impact to ground surfaces. It drills a tunnel underground and pulls electric cable through. You can expect:

- Some noise and dust around work areas
- Trucks and heavy equipment on or near roads around near Government Camp, including US Highway 26.
- Traffic lane closures in work areas.
- Snow Bunny parking area will be closed during construction.

In summer 2027, some hiking and biking trails may be impacted during construction of the segment on Mt. Hood. PGE will provide more information ahead of construction.

TIMELINE

Construction is expected to begin in early May 2026 and will conclude in October. The remainder of the project will be done between May and October of 2027.

LOCATION

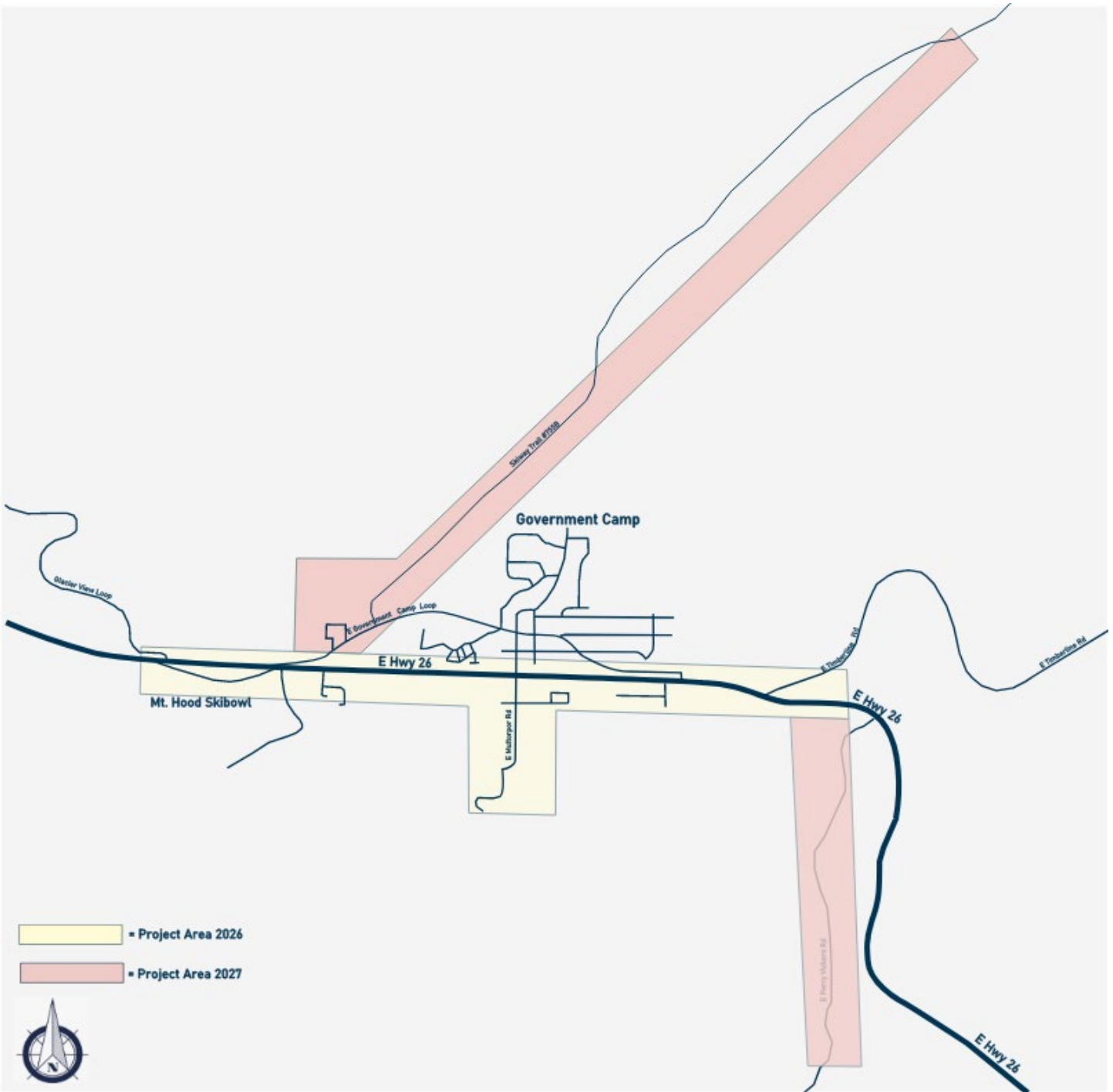
The project includes three main areas: Mt. Hood Ski Bowl West to the Summit substation, Summit substation to the old airport (Perry Vickers Rd), and from the west end of Government Camp Loop along the Skiway Trail #755B approximately halfway to Timberline Lodge (see map on reverse).

For project updates, visit portlandgeneral.com/projects

QUESTIONS?

Send questions or comments to CommunityConnect@pgn.com





Project area outline is approximate