



# Learning Lab Series

Learning Lab # 5 - May 18, 2023



# Meeting Logistics



Audio



Microphone



Chat box



Video



Raise Hand



Closed Caption

# Operating Agreements



Establishing norms with our communities is foundational to building trust

To create a **safe space**, we established **common agreements** such as **respect, honoring diversity of thought**, and **inclusivity**

**Practice curiosity** and **seek to understand different perspectives**

**Stay  
Engaged**

**Be Willing To  
Experience  
Discomfort**

**Speak Your  
Truth**

**Expect and  
Accept Non-  
closure**

**Share the  
Airtime**



[The courageous conversations framework](#)  
by Glenn Singleton and Curtis Linton

# Meeting Objectives

Share updates related to PGE Plans and collaboration

Seek input on presented ETO & PGE collaboration

Q&A regarding CEP/IRP filing

Share timelines and next steps

# Agenda

10:00 - 10:10 Welcome, Introductions, Meeting Logistics

10:10 - 10:30 Wildfire Awareness Announcement

10:30 - 10:50 Energy Trust of Oregon | PGE - Collaboration Update

10:50 - 11:10 PGE Acknowledgement of CEP/IRP Comments

11:10 - 11:50 CEP/IRP Filing Questions & Answers

11:50 - 12:00 Closing Remarks & Next Steps

# 'Wildfire Ready' Events Announcement

Brett Phillips: Senior Manager, Wildfire Operations  
Learning Lab 5/18/23

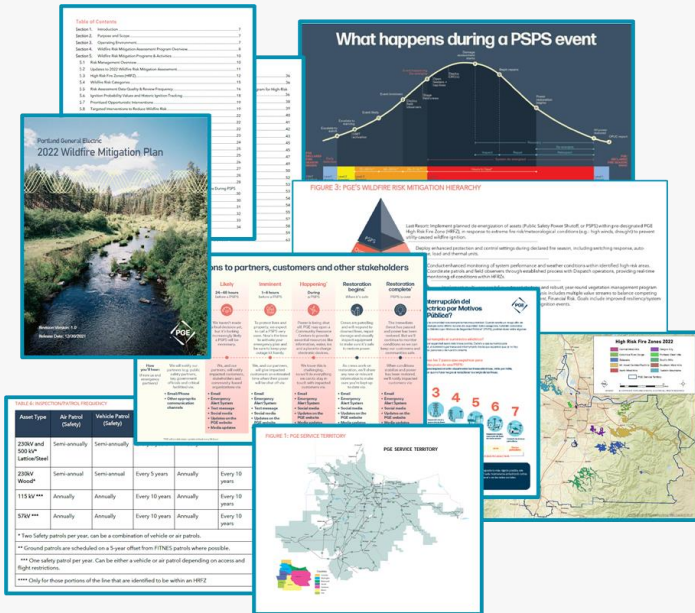


# 2023 Wildfire Mitigation Plan (WMP)

**Submitted to OPUC  
12.22.22**

**WMP Topics Include:**

**Available Online:**



- ✓ Wildfire Risk Mitigation Programs & Activities
- ✓ Operating Protocols
- ✓ Operations During PSPS Events
- ✓ Asset Management & Inspections
- ✓ Vegetation Management
- ✓ Community Outreach & Public Awareness
- ✓ Research & Development

**Approval expected no later than 06.19.23 (180 days from submission)**

Are you ready?

As Oregon's weather gets hotter and drier, wildfires can hit suddenly and grow quickly and create a greater likelihood of summer safety-related power outages. We're preparing and we encourage you to prepare as well.

Prepare your home

[Get started](#)

Prepare your business

[Get started](#)

[Portland General Electric Public Safety Power Shutoff Overview](#)

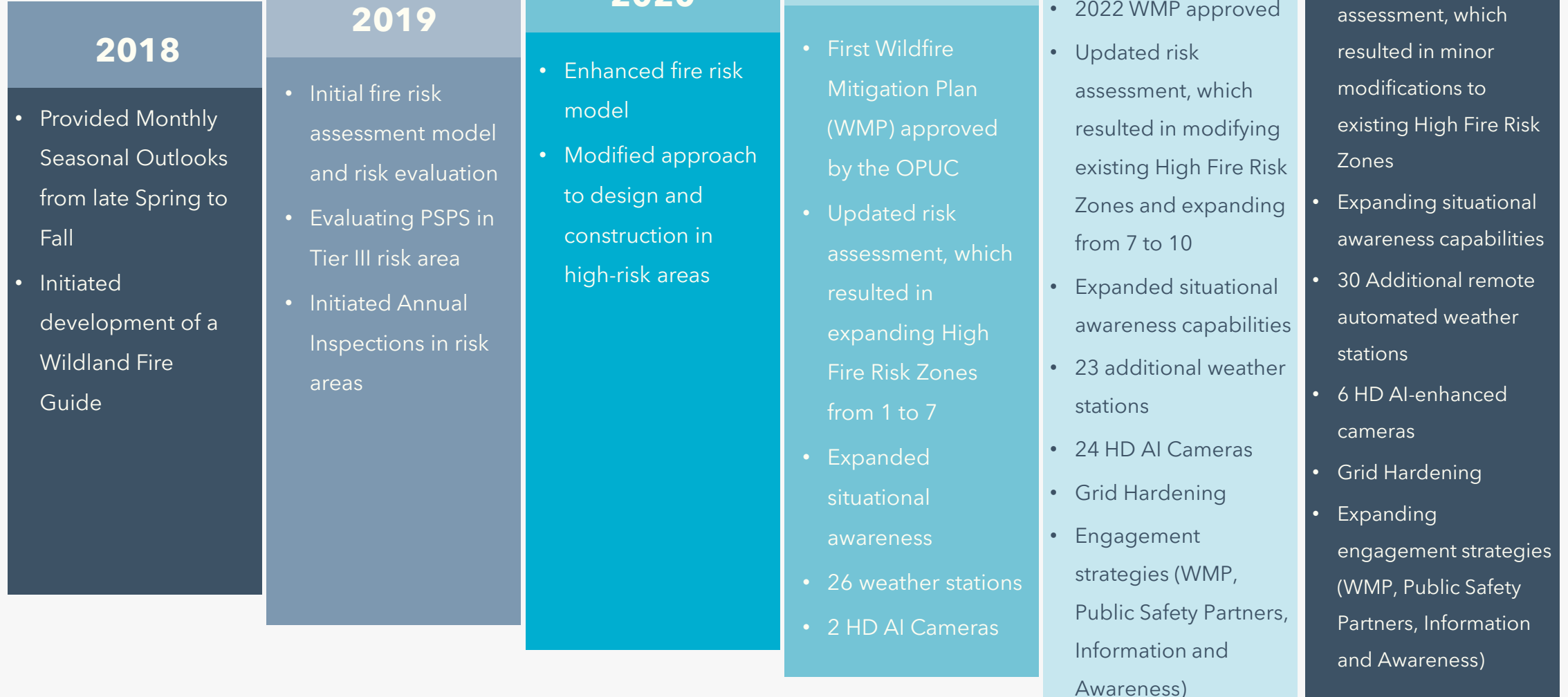
[Portland General Electric 2023 Wildfire Mitigation Plan](#)

[Portland General Electric 2022 PSPS Annual Report](#)

**[WMP on Portlandgeneral.com](https://www.portlandgeneral.com/WMP)**



# PGE's Wildfire Mitigation Journey





# Wildfire Ready

What does this mean for our communities?



## Raise awareness

Provide a space where customers can learn about our current [Wildfire Mitigation Plan](#).

## Communicate

Bring experts along to have one-on-one conversations about the topics weighing most heavily on customers' minds.

## Listen

Listen and document what customers have to say. PGE's WMP and operational processes live in a state of continuous improvement – we want to hear which pieces our customers and communities feel strongly about.

# Wildfire Ready events details

## Virtually on Zoom

Monday, June 5<sup>th</sup> - 6pm

Register on our website at [www.portlandgeneral.com/wildfireready](http://www.portlandgeneral.com/wildfireready)

## North Plains Elementary School, Cafeteria

Tuesday, June 6<sup>th</sup> - 5 - 7pm

We'll be joined by:

- ODHS OREM
- Oregon State Fire Marshal
- Washington County EM
- ODF

## Sandy High School, Cafeteria

Friday, June 9<sup>th</sup> 5 - 7pm

We'll be joined by:

- ClackCo Disaster Management
- ODHS OREM
- OSU Extension Fire Program
- ODF

## Sheridan High School, Cafeteria

Monday, June 12<sup>th</sup> - 5 - 7pm

We'll be joined by:

- Grand Ronde Emergency Services
- ODHS OREM
- Firewise Community of Yamhill County
- Oregon State Fire Marshal

## Virtually on Zoom

Wednesday, June 14<sup>th</sup> 10:30am

Register on our website at [www.portlandgeneral.com/wildfireready](http://www.portlandgeneral.com/wildfireready)

## Mt. Angel Public Library, Community Meeting Room

Thursday, June 15<sup>th</sup> - 4:30 - 6:30pm

We'll be joined by:

- ClackCo Disaster Management
- ODHS OREM
- Oregon State Fire Marshal
- ODF
- Mt. Angel Fire Dept.

Spread the word!



Join us!



Share your thoughts!





# Questions/ Comments





# Energy Trust of Oregon & PGE Collaboration

Jake Wise, PGE

Learning Lab 5/18/23



# Objectives

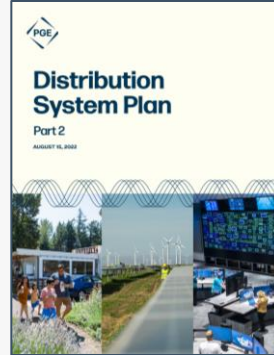
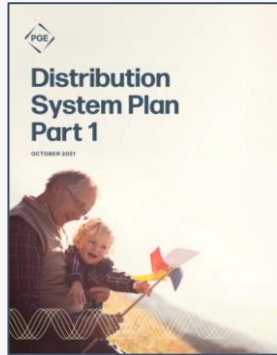
Provide insight into PGE's collaboration with Energy Trust

Elicit feedback from Lab participants on 2024 action plan

Share expected 2024 opportunities

# PLAN: Listen & Communicate

## Community Involvement & Collaboration



### Empowered Communities:

Foster equitable participation in distribution decisions

DSP, Part 1, [Chapter 3](#)

### Non-Wires Solutions:

Validate planning approach with Energy Trust as well as other partners contributing to delivery of the DER solutions.

DSP, Part 2, [Chapter 6](#)

### Annual Budget/Action Planning:

Partner with Energy Trust to assess the market & set high-level strategic priorities.

House Bill (HB) 3141 Implementation

# HB 3141 Budget Coordination Memo

## Utility Action Plan Timeline



### Deploy

**Quarterly Workgroup**  
mtgs to track 2023 utility  
specific action plan (USAP)



**Quarterly 2023 USAP  
Sync (Jan)**

### Research

**Market Assessment**  
begins for  
2024 action plan



**Quarterly 2023 USAP  
Sync (Apr)**

### Plan

**Stakeholder Engagement**  
continues for  
2024 action plan



**Quarterly 2023 USAP  
Sync (Jul)**

### Budget

**Funding Negotiations**  
begin for  
2024 action plan



**Quarterly 2023 USAP  
Sync (Oct)**

# RESEARCH: Market Assessment 2024 Planning – Q2/Q3



QR Code to Survey



1

## Industry Trends

- How is the energy industry landscape changing, compared to where we were in April 2022?
- What market trends (economic, social, legislative, environmental, technological) are on your organization's horizon in 2024 that Energy Trust should be aware of and planning around?

2

## Customer Needs

- **What are you hearing from customers and the communities you work with?**
- **What barriers and challenges are customers facing?**
- **Are there any specific communities you want to flag as needing attention?**
- **What is your organization talking about in respect to serving your own customers or members?**

3

## Opportunities

- What innovations in program design and delivery are you most excited about?
- What are the biggest market opportunities you see emerging over the next 12-18 months?
- What partnership opportunities do you see (over the next 12-18 months) where our organizations can work together to achieve mutual goals and bring more clean energy benefits to customers?

4

## Strategic Priorities

- What are the overall strategic priorities for your organization over the next 12-18 months (pertaining to saving energy, clean energy offerings and rate impact)?
- What impact should Energy Trust be striving to make for customers over the next 12-18 months?
- As a utility partner, what would you like to see Energy Trust focus on in 2024?



# Non-Wires Solutions Design Process – 2023 Timeline



PHASE	WORKSTREAM	APR	MAY	JUN	JUL	AUG	SEP
<b>Solution Analysis</b>	1. Community Engagement Plan	█	█				
	2. NWS Boundary Data Requests	█	█				
	3. Align on Locational Value Methods	█	█				
	4. Resource Contribution Analysis		█	█	█	█	
<b>Decision Making</b>	5. Identify Solution Limitations			█	█		
	6. Align on Loading Order & Prioritization			█	█	█	
	7. Identify & Apply Metrics			█	█	█	
<b>Solution Proposal</b>					█	█	█

**Feedback Loop** (indicated by a red arrow from the end of the timeline back to the start of the Solution Analysis phase)

**Source:** Adapted from the PGE [DSP Non-Wires Solutions Technical Process & Procedures Manual](#)

# Inflation Reduction Act Rebate Eligibility



The law specifies that **Home Efficiency Rebates (HOMES) (Sec. 50121)** and **Home Electrification Rebates (HEERA) (Sec. 50122)** are available to “individuals and aggregators carrying out energy efficiency upgrades of single-family homes...[and] multifamily buildings.”

These rebates are available to households of any income, but for households with a total annual income below 80 % Area Median Income (AMI), rebates can cover a higher percentage of total project costs.

Project Type	Scope	Maximum Rebate (<80% AMI) Low-Income	Maximum Rebate (> 80% AMI) Moderate-Income
<b>HOMES</b>	At least 20% predicted savings	80% of project costs up to \$4000	50% of project costs up to \$2000 (maximum of \$200k for a multi-family building)
<b>HOMES</b>	At least 35% predicted savings	80% of project costs up to \$8000	50% of project costs up to \$2000 (maximum of \$400k for a multi-family building)
<b>HEERA electrification qualified technologies (EQT)</b>	Heat pump HVAC Heat pump water heater Electric stove/cooktop Heat pump clothes dryer Breaker box/ panel Electric wiring Weatherization	100% of project costs up to \$14000 (maximum contractor rebate is \$500)	50% of project costs up to \$14000 (households with incomes above 150% AMI are ineligible)

## Next Steps

Your feedback is appreciated

PGE will provide Learning Lab participants (and those unable to join) a [link to a survey](#) that includes the Customer Needs questions discussed.

# CEP/IRP Process and Initial Comments Update

Sam Newman, PGE

Learning Lab 5/18/23



# PGE CEP/IRP Process Overview

Overview of OPUC Docket No. LC 80 schedule



All dates based on 4/20/23 Scheduling Conference Memo (<https://edocs.puc.state.or.us/efdocus/HDA/lc80hda155619.pdf>) and may be updated. See LC 80 docket.

# Update on Initial Comments (“Round 0”)

*(filed by Thursday 5/4)*

9 groups or individuals filed initial comments

- [OPUC Staff](#)
- [Energy Advocates](#)
- [Renewable Northwest](#)
- [Swan Lake / Goldendale](#)
- [Grid United LLC](#)
- [Oregon Citizens’ Utility Board](#)
- [Elizabeth Graser-Lindsey](#)
- [Green Energy Institute](#)
- [NewSun Energy](#)

# Themes from Initial Comments

Initial comments covered the breadth of the CEP/IRP

---

**Accessibility and Engagement**

---

**Annual Progress**

---

**Resource Options**

---

**Resource Economics**

---

**Energy Efficiency & Demand Response**

---

**Community Benefit Indicators (CBIs)**

---

**Community-Based Renewable Energy (CBRE)**

---

**Transmission**

---

**Thermal Operations**

---

**Colstrip**

---

**Greenhouse Gas Emissions**

---

**Modeling Details**

---

**Portfolio Analysis**

---

**Procurement (RFP)**

# Themes from Initial Comments

## Accessibility & Engagement

Integrating energy justice principles and make materials accessible



## Modeling

Assessment of emissions glidepaths. Consideration of additional generation and transmission options



## CBIs & CBRE

Plans for further development of CBIs and procurement of CBREs



## Procurement

Alignment of all-source procurement plans with CEP/IRP review timeline





## Next Steps

PGE will be working on a response to the initial comments by May 31

PGE is also preparing an errata update to the CEP/IRP and data template

# Questions/ Comments





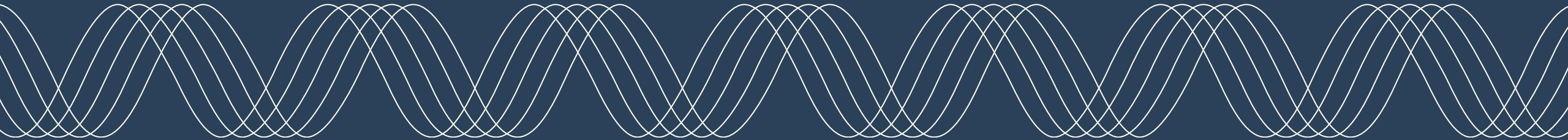
# CEP/ IRP Filing Questions & Answers

Seth Wiggins, PGE  
Learning Lab 5/18/23

Clean Energy Plan and  
Integrated Resource Plan  
2023



# Next Steps & Closing Remarks



# Next Steps & Closing Remarks



- May 31 | 10a-12p | PGE CBIAG Monthly Meeting
- June 1 | TE Plan draft filing
- June 15 | PGE TEP Workshop at the OPUC
- June 16 | 10a-12p | Learning Lab



Meeting Materials (slides and video) will be posted in a week to our CEP/IRP website at [Integrated Resource Planning and Clean Energy Planning | Portland General Electric](#)



For more information or if you have questions, please email us at [CEP@pgn.com](mailto:CEP@pgn.com) or via [Feedback-Form](#)



Please continue participating on CEP/IRP filing by submitting comments via [Docket LC 80](#)

An

Oreanon  
Oreanon  
Oreanon  
Oreanon  
Oreanon  
Oregon

kind of energy