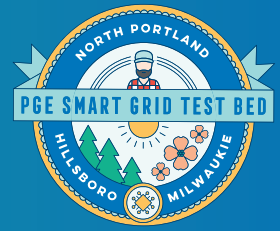
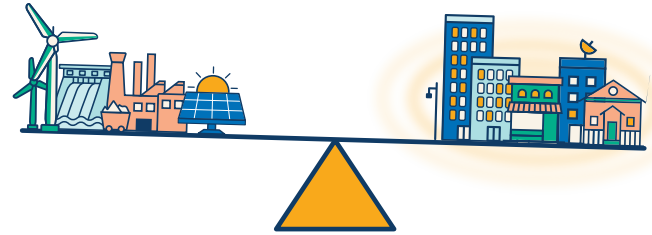


# RETHINKING ENERGY, SHAPING OREGON'S FUTURE



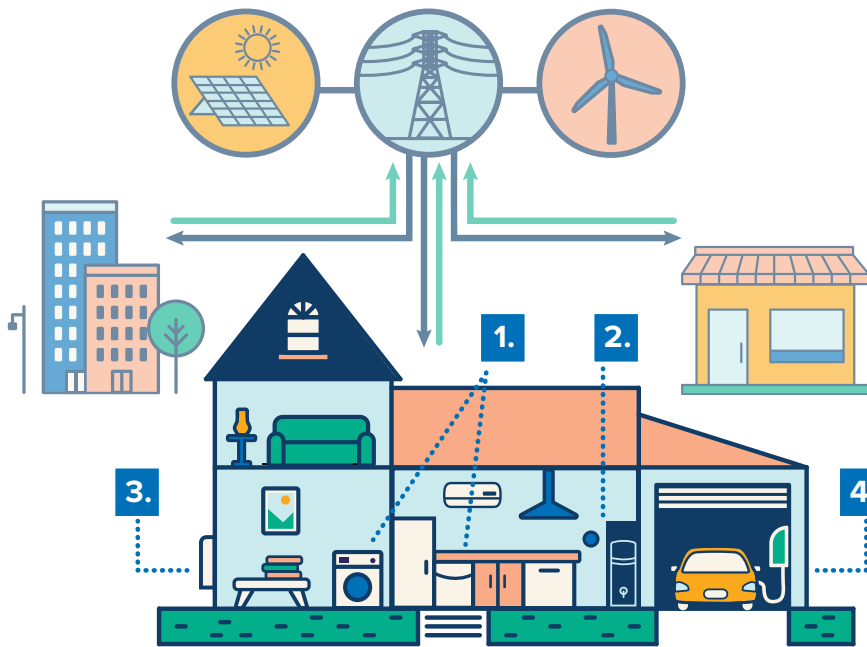
## WHAT IS A SMART GRID?

Smart grid technology uses a community-driven approach to balance energy use, lowering costs and allowing us to use more sustainable resources at peak times.



## HOW DOES THE PGE SMART GRID TEST BED WORK?

Innovative new programs and technologies reward you for taking simple actions that shift your energy use away from peak times, enabling a smarter, more flexible and more efficient grid.

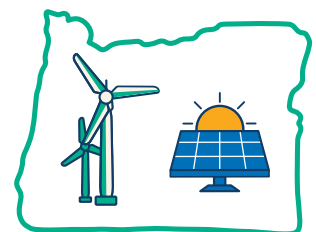


## THE SMART GRID AT HOME AND WORK

- 1. SAVINGS NOTIFICATIONS**  
rewards you for shifting your energy use, i.e., choosing to do energy-intensive chores at off-peak times.
- 2. SMART GRID-CONNECTED APPLIANCE PROGRAMS**  
for water heaters and thermostats that can automatically make minor adjustments to improve energy efficiency and reduce energy use at peak times.
- 3. HOME BATTERY STORAGE**  
giving you the ability to store power from renewable sources and use it when you need it.
- 4. CONNECTED HOME E.V. CHARGING**  
providing fast Level 2 charging and incentives for charging at non-peak times.

## WHY DOES IT MATTER?

Smart Grid technology gives us the power to work as a community to keep energy prices lower, use more renewable resources, and invest in future projects that create Oregon jobs and a healthier environment.



Learn more at [portlandgeneral.com/SGTBfuture](http://portlandgeneral.com/SGTBfuture)