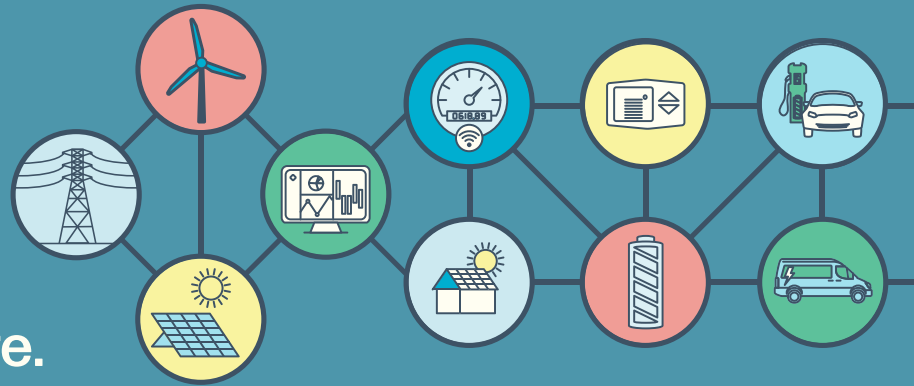


The PGE Smart Grid Test Bed

Rethinking energy.
Shaping Oregon's future.



What's a smart grid?

A smart grid meets the energy needs of the community by managing the two-way flow of energy production and energy use. Our smart grid takes a community approach to balancing energy use with innovative programs that help reduce peaks in use, lower costs and allow us to use more sustainable resources.

How does the PGE Smart Grid Test Bed work?

You can earn rewards for taking simple actions that shift your energy use to other times. Each Smart Grid Test Bed program will be offered to small groups to take advantage of the technologies and locations available. By choosing to participate in these new, innovative programs, you can reduce your energy costs through bill credits, rebates, reduced energy use or direct financial compensation.

Why does it matter?

Smart grid technology and programs give us the power to work as a community to help use more sustainable resources, keep energy prices lower, and invest in future projects that create Oregon jobs and a healthier environment. If everyone shifts even a little bit of their energy to balance energy use, it helps create a smarter, more flexible and more reliable grid.

Together, small changes in how and when we use energy make a big difference in building a clean energy future for Oregon.



The smart grid at home and work

- 1. Savings notifications** let you know about opportunities to earn rewards for shifting your energy use — for example, by choosing to do energy-intensive chores at off-peak times.
- 2. Smart-grid-connected** appliance programs for water heaters and thermostats can automate minor adjustments to improve energy efficiency and reduce energy use when needed.
- 3. Home battery storage** gives you the ability to store power from sustainable sources and use it on demand.
- 4. Connected, home electric vehicle charging** provides fast Level 2 charging and incentives for charging your EV at off-peak times.
- 5. Solar programs** pay you when your rooftop solar system is used to support the grid.



Learn more at portlandgeneral.com/sgtbfuture