

Lower Deschutes River Fish Population Status Update



Jason Seals
Mid-Columbia Fish District
Oregon Department of Fish and Wildlife



Today's Updates



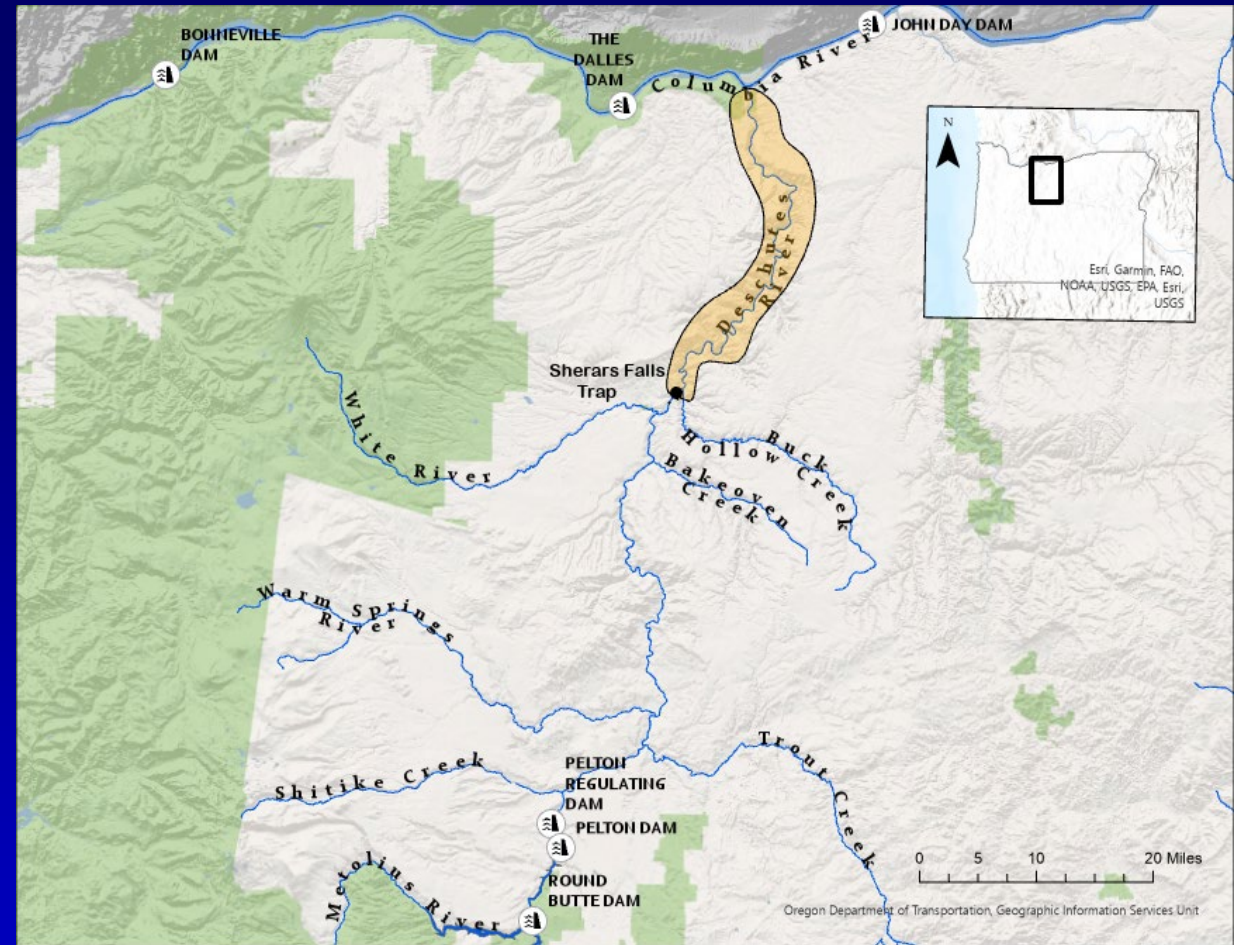
- Estimates of Steelhead, Coho, and Fall Chinook
- Coho Colonization
- Returns of Spring Chinook to Hatcheries
- Densities of Redband Trout



Steelhead Estimates

Mark-Recapture (2+ events)

- Sherars Trap
- Pelton Trap
- Warm Springs National FH
- Trout Creek Video
- Out-of-basin Tag Returns and PIT tag detections

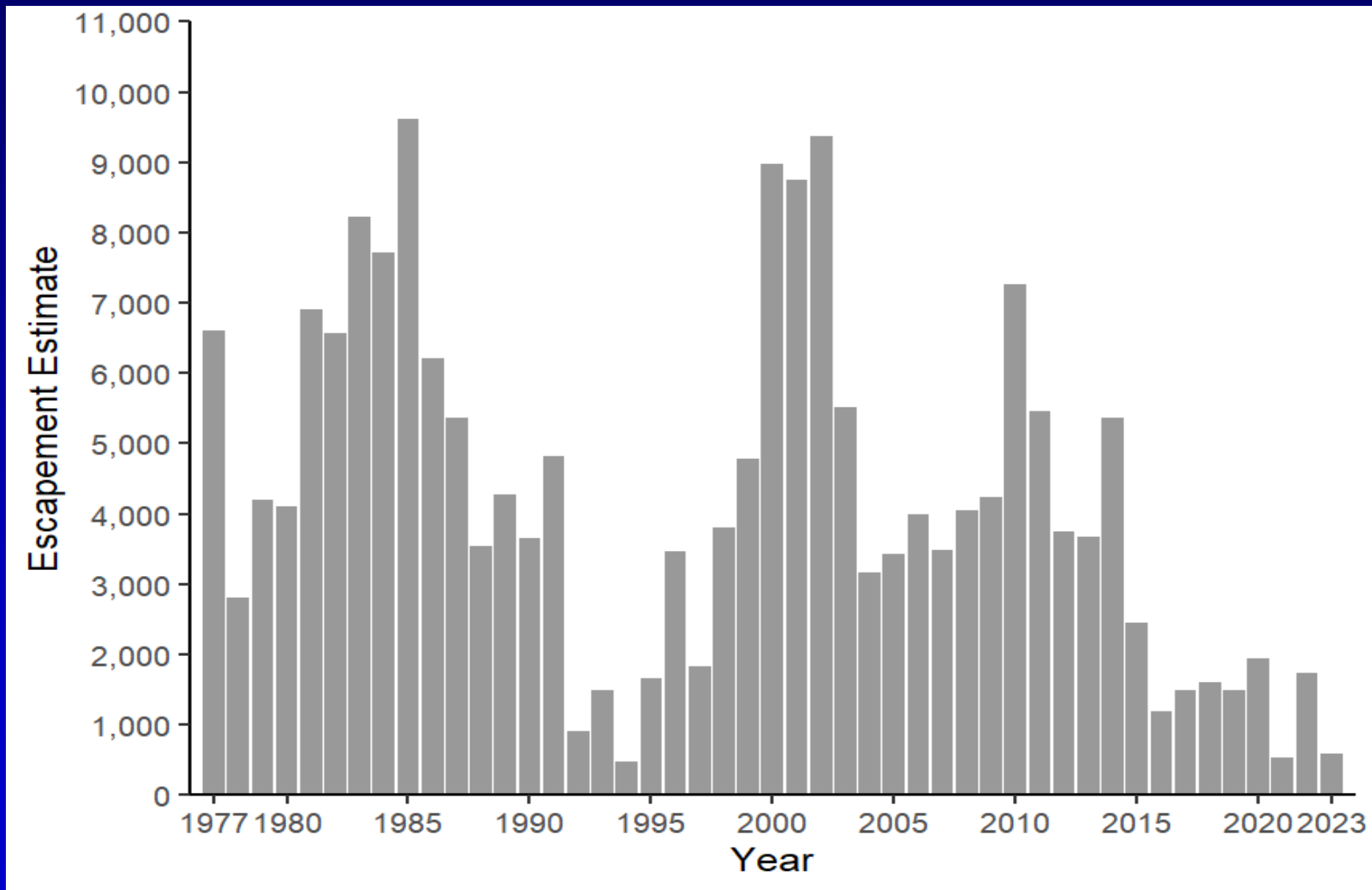


Run estimates for Above Sherars Falls

Steelhead Estimates

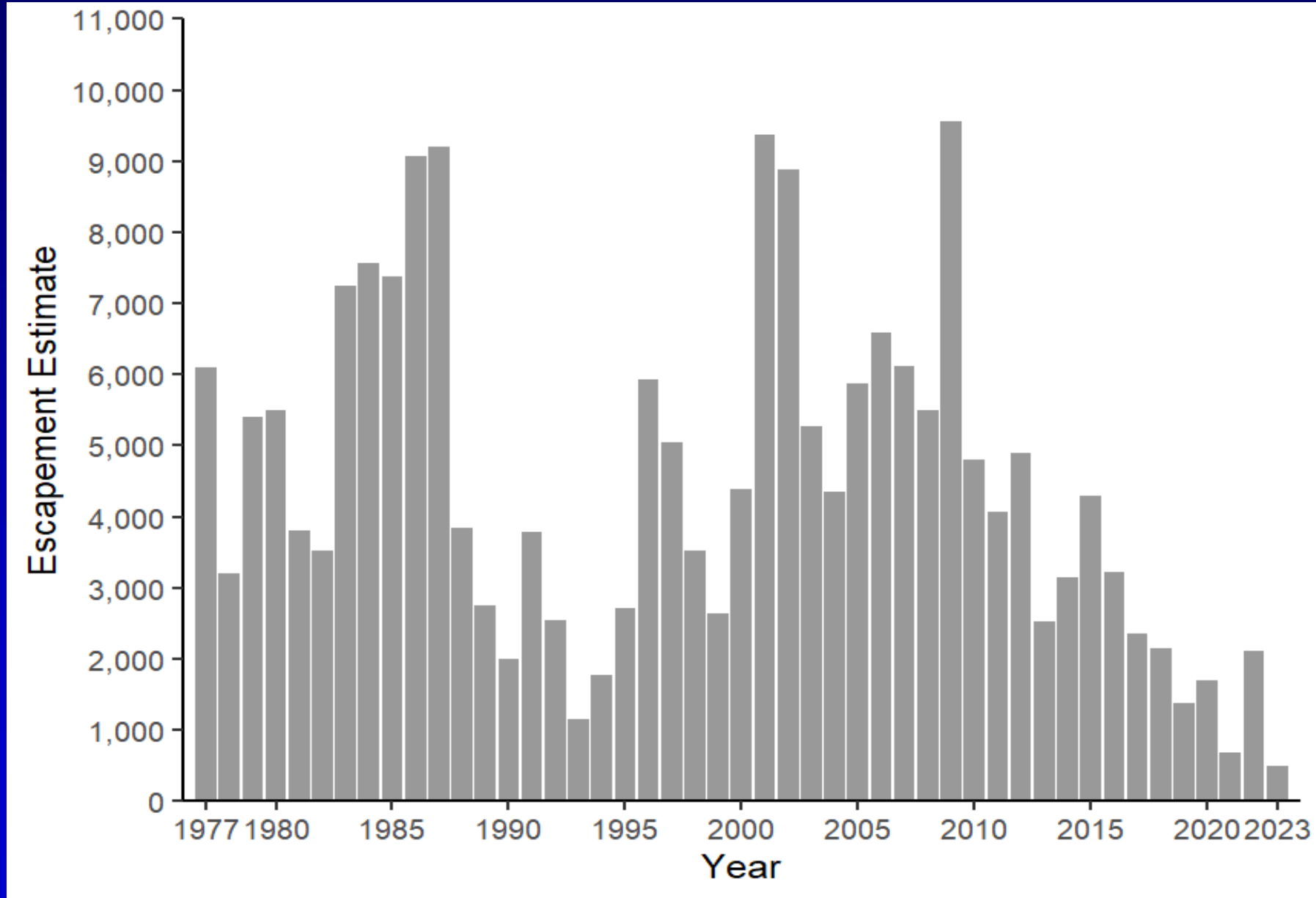
Run Year	Wild	Wild Temp Strays Excluded	Round Butte Hatchery	Stray Hatchery	Stray Hatchery, Temp Strays excluded	Total Hatchery	Total Hatchery, Temp strays
2010-11	7,257		4,799	5,101		9,900	
2011-12	5,450		4,063	5,363		10,324	
2012-13	3,749		4,903	4,336		10,496	
2013-14	3,677		2,523	2,884		5,469	
2014-15	5,358		3,154	2,002		5,046	
2015-16	2,457		4,293	1,926		5,954	
2016-17	1,196		3,224	553		3,980	
2017-18	1,487		2,348	1,039		3,364	
2018-19	1,605		2,140	457		2,723	
2019-20	1,492	1,233	1,382	1,898		2,798	
2020-21	1,935	1,712	1,701	1,987		3,631	
2021-22	611	523	687	713		1,586	
2022-23	1,730	1,574	2,110	353	176	2,608	2,290
2023-24	837	594	491	939	351	876	1,609

Wild Steelhead Above Sherars

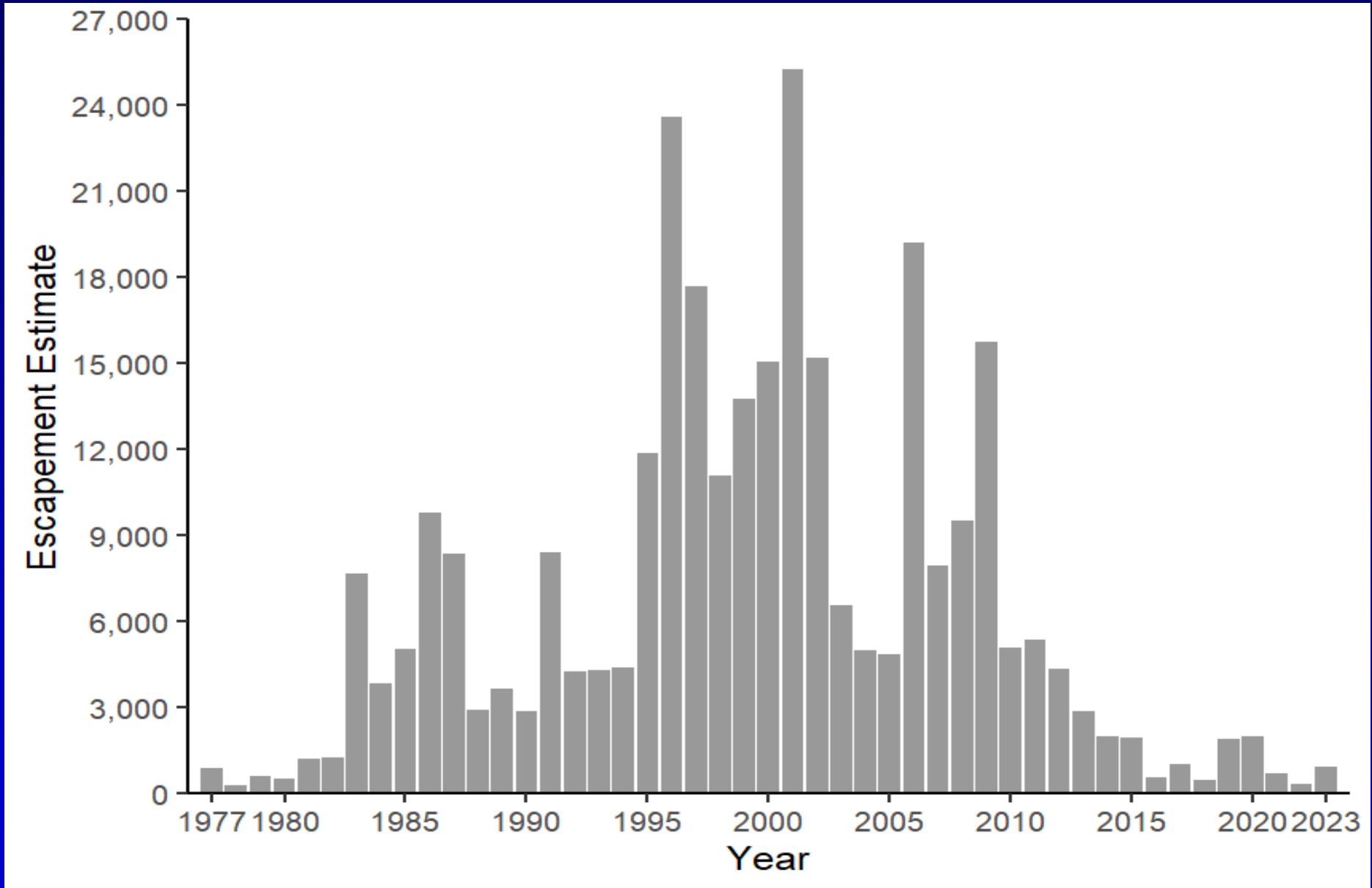




Round Butte Hatchery Steelhead Above Sherars Falls



Stray Hatchery Steelhead Above Sherars Falls





Coho Run Estimates

Mark-Recapture

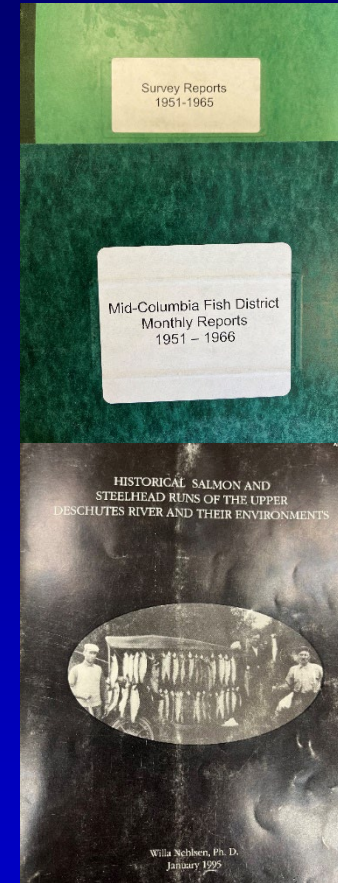
- Sherars Trap
- Pelton Trap
- Warm Springs National FH



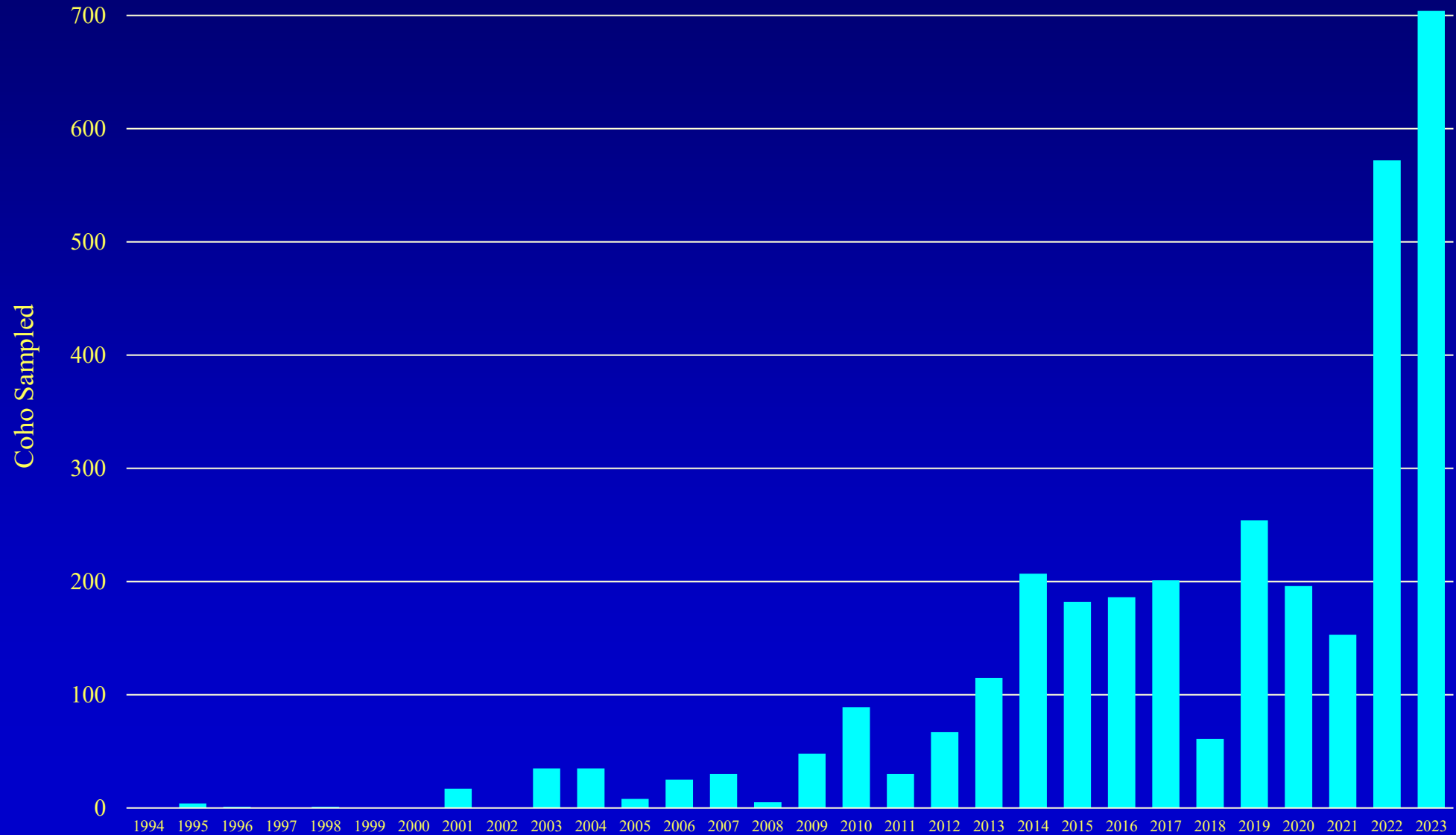
Run estimates for Above Sherars Falls

Background on Coho in Deschutes

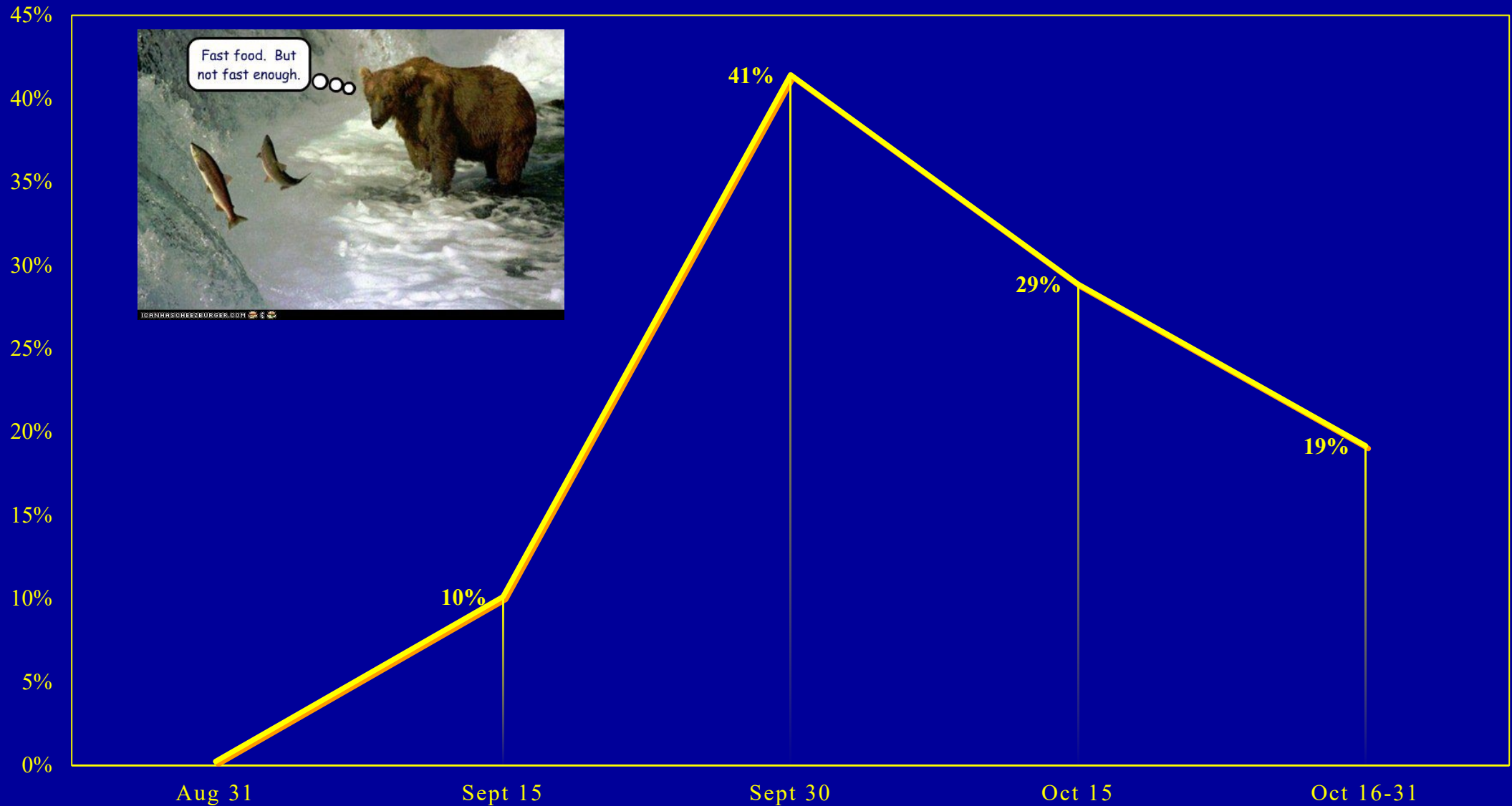
- No Historical Documentation
 - OSGC Annual and Monthly Report
 - 1950's and 1960's
 - Nehlson 1995
- Sherars Trap 1977 to 2023
 - No Coho from 1977 to 1994
- Closest Coho Populations - Columbia River Gorge



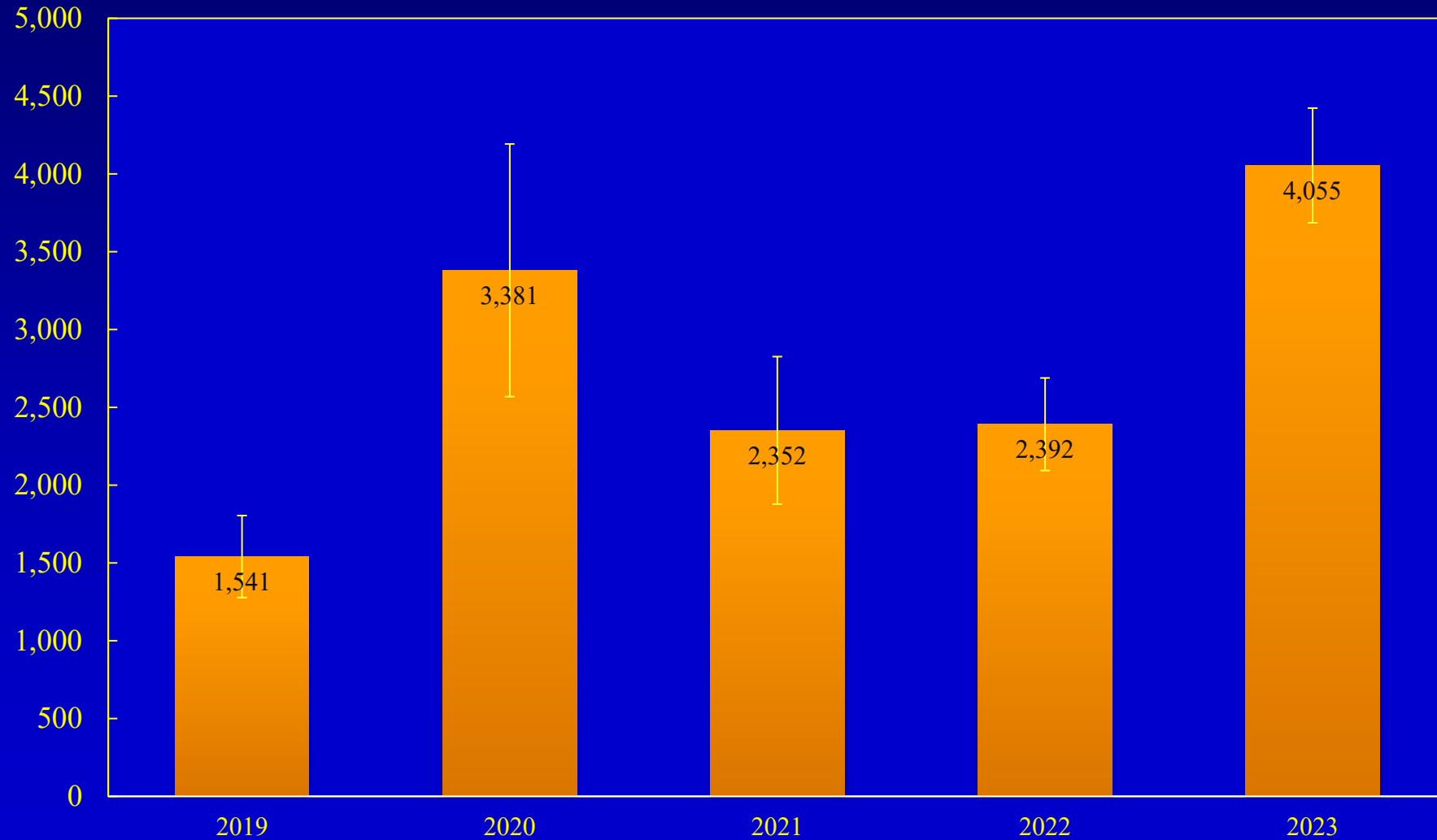
Sherars Trap Adults (N)



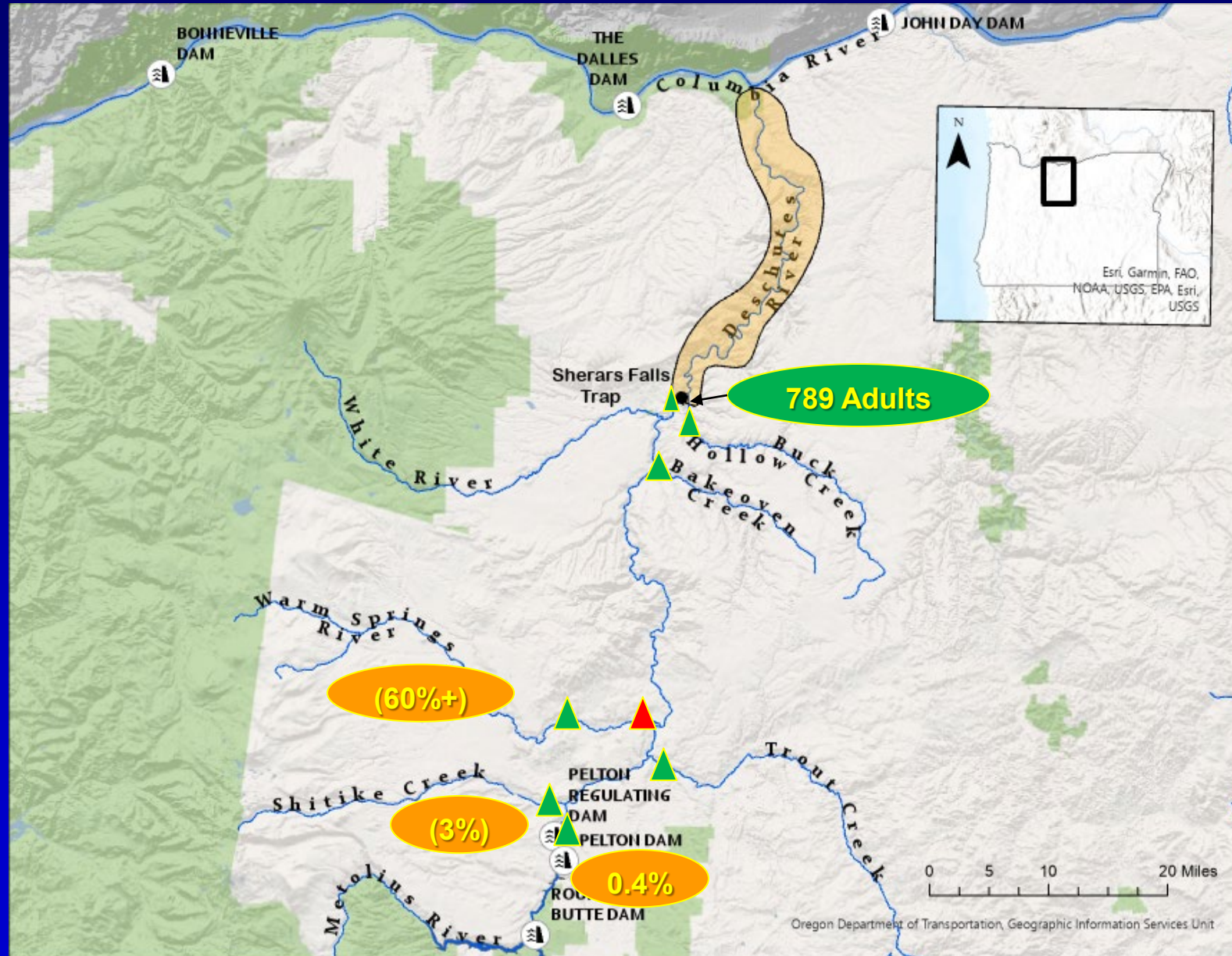
Run Timing to Sherars Falls



Escapement Upstream of Sherars Falls



2023 Spawner Distribution





Fall Chinook Run Estimates

Mark-Recapture

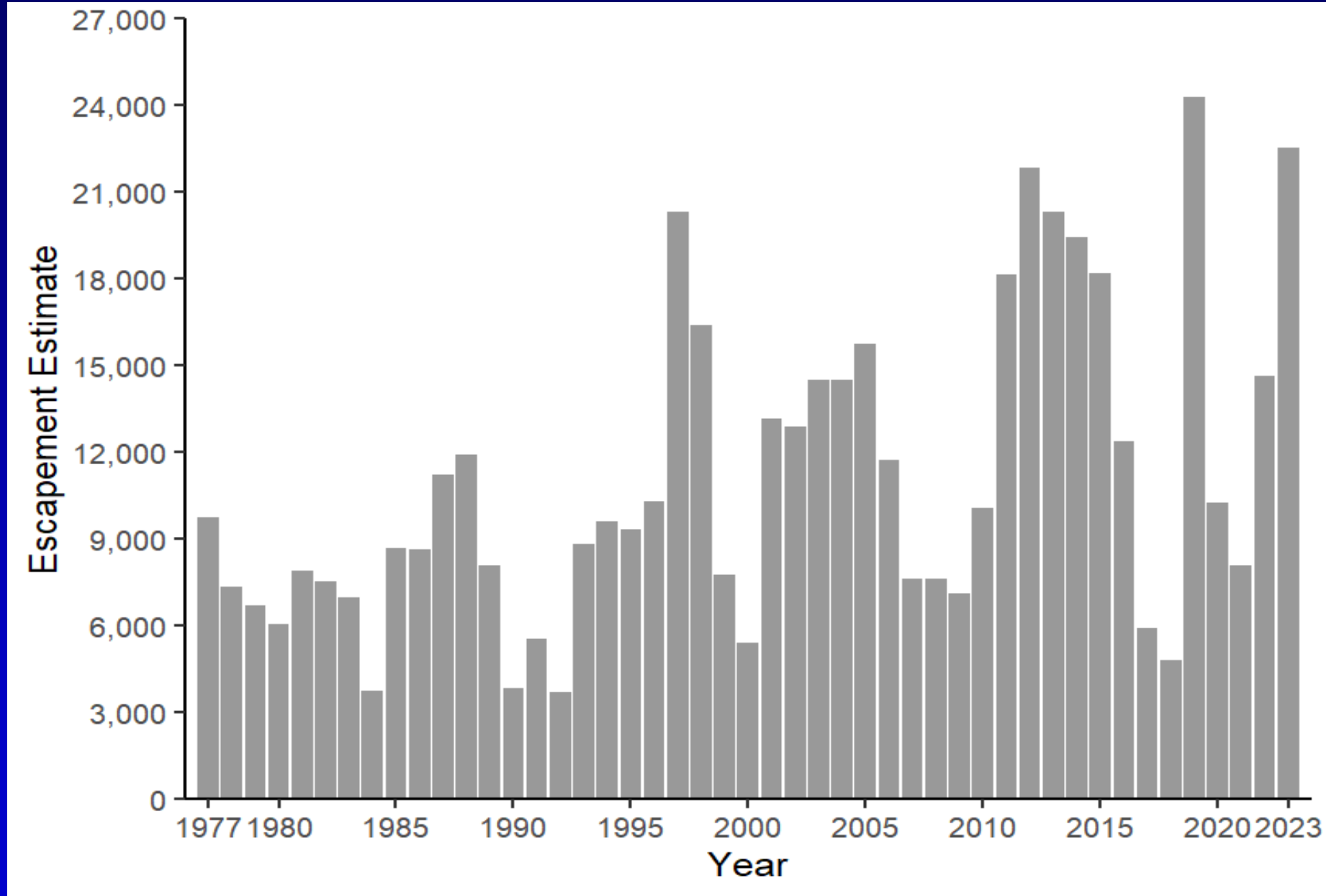
- Sherars Trap
- Pelton Trap
- WSNFH

- Carcass surveys
- Creel surveys
- Redd Flights
- Scale Reads



All River Run Reconstruction

Wild Fall Chinook All River Run Reconstruction Estimates



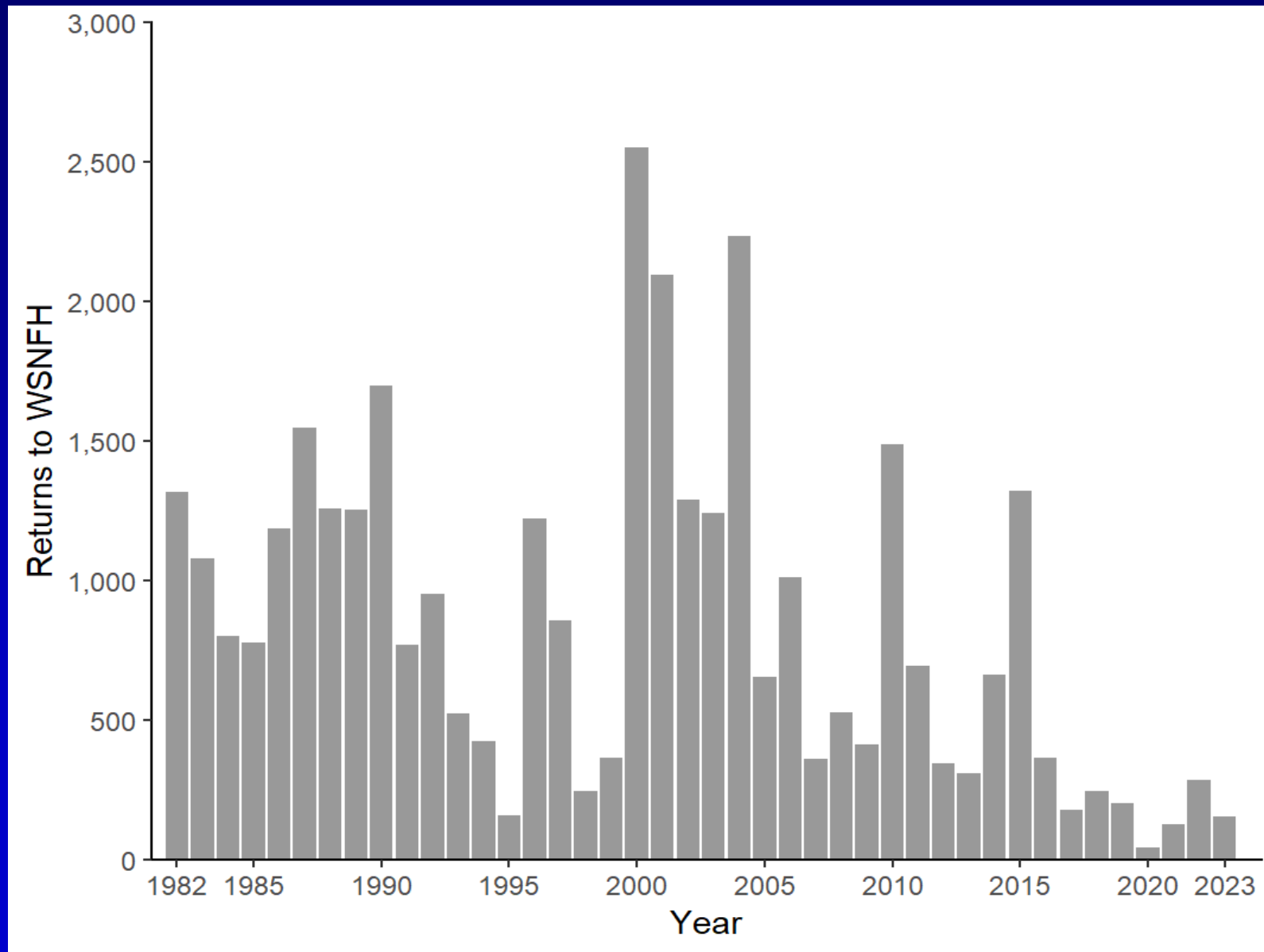
Spring Chinook Run Estimates

- Not associated with Sherars Trap
- Wild Run Size Enumerated at Warm Springs National





Wild Spring Chinook Returns to WSNFHH





Deschutes Trout Monitoring

Previously Reported:

- Growth
- Age structure
- Food consumption
- Condition
- Disease





Deschutes Trout Monitoring

2019 to 2024: Continued previous studies since 2014

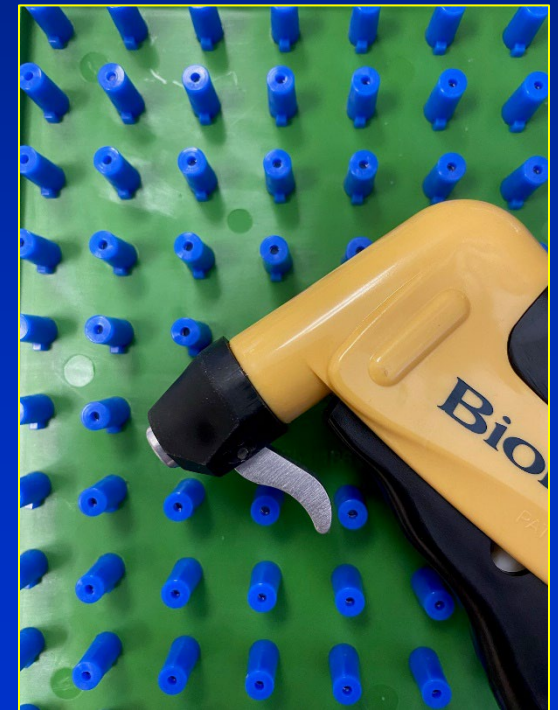
- Conducted Population & Growth Estimates
 - Nena Creek 2019, 2020
 - North Junction and Jones Canyon 2021, 2022
 - Jones Canyon 2024
- Growth Estimates Only
 - North Junction 2023
 - Trout Creek 2020





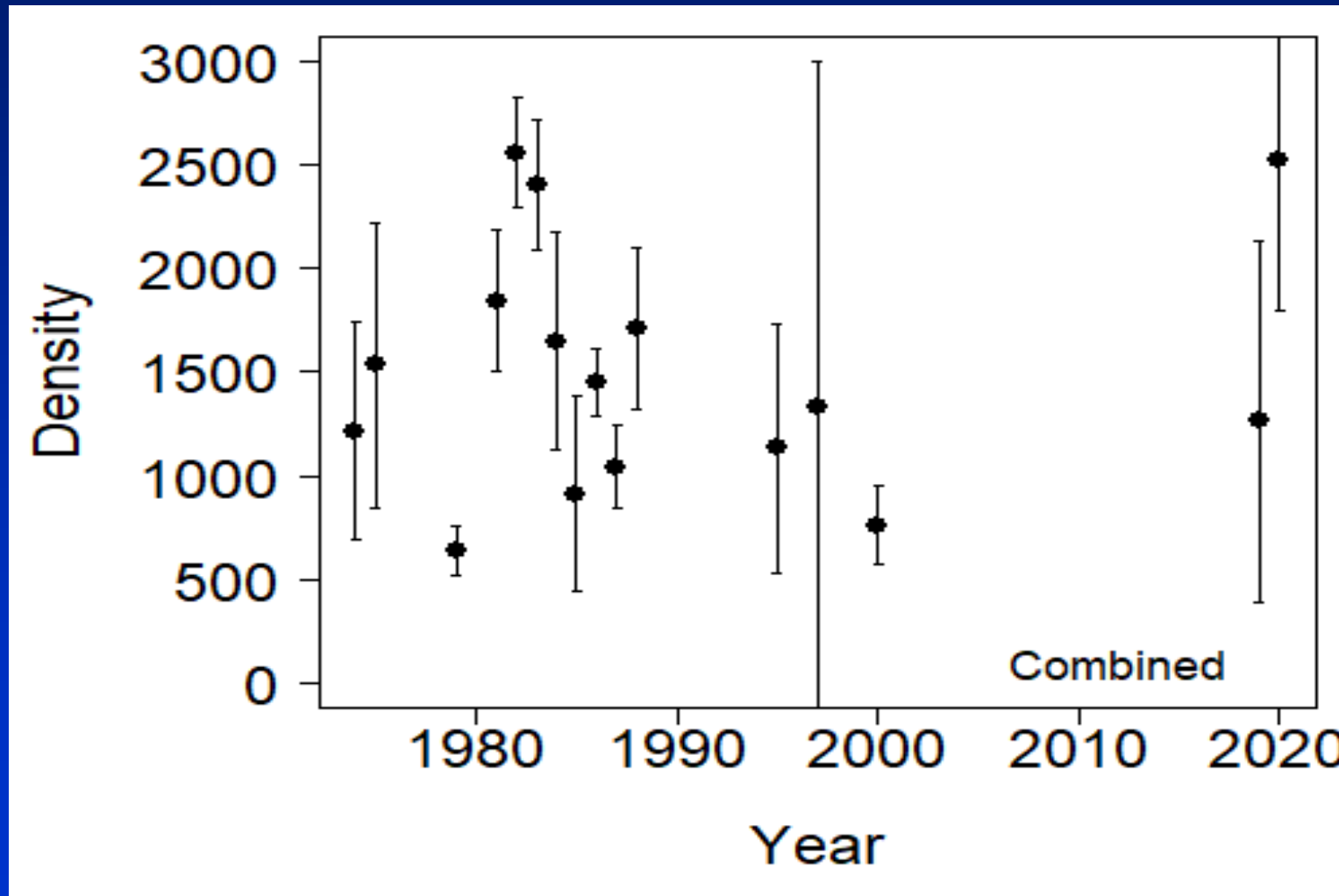
M-R Methods

- Methods and Sections same as Historical (Schroeder and Smith 1989, Newton and Nelson 2000, Jones and Seals 2019)
- Multiple pass electrofishing
- Closed Population Models



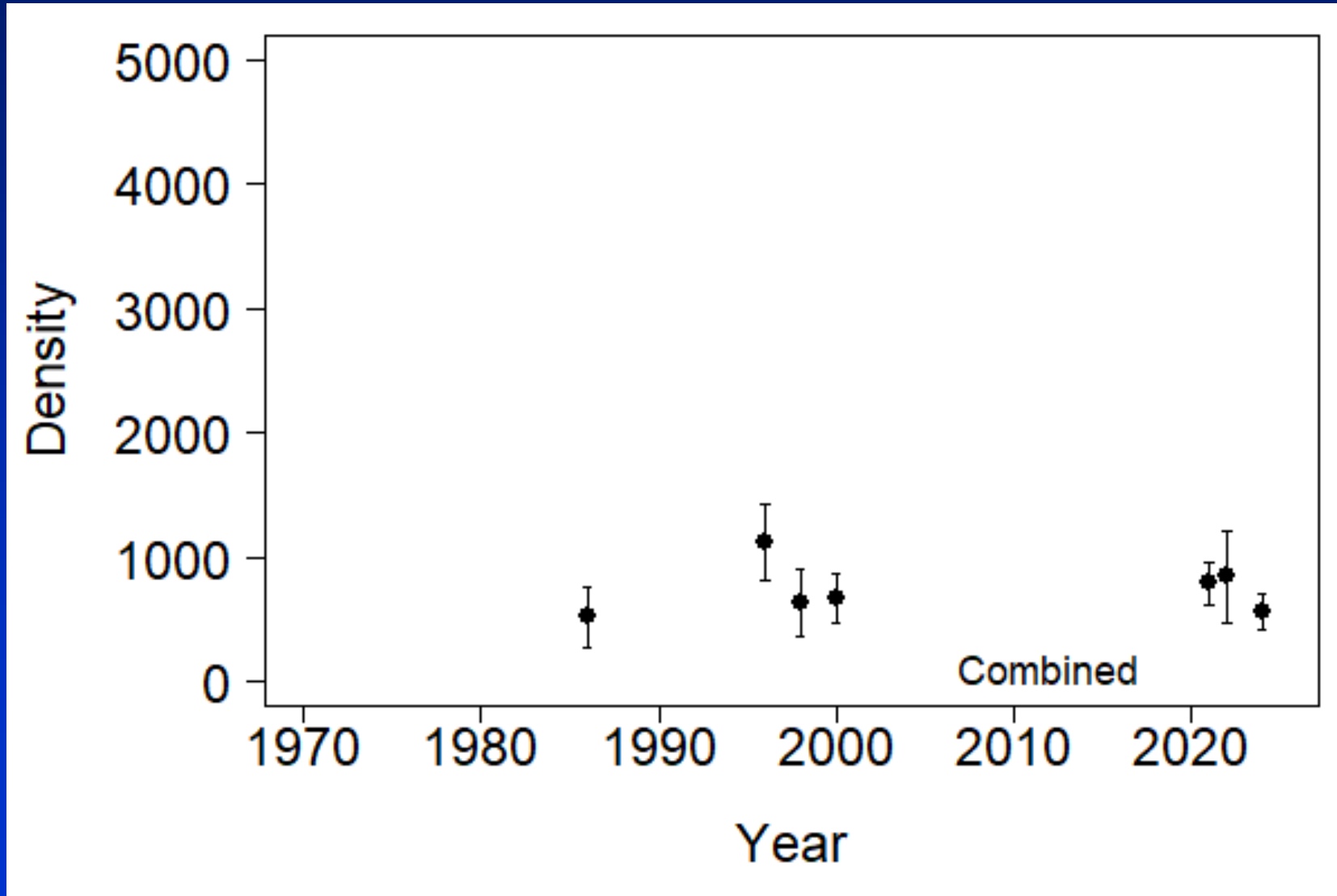


Nena Creek Section Fish Per Mile



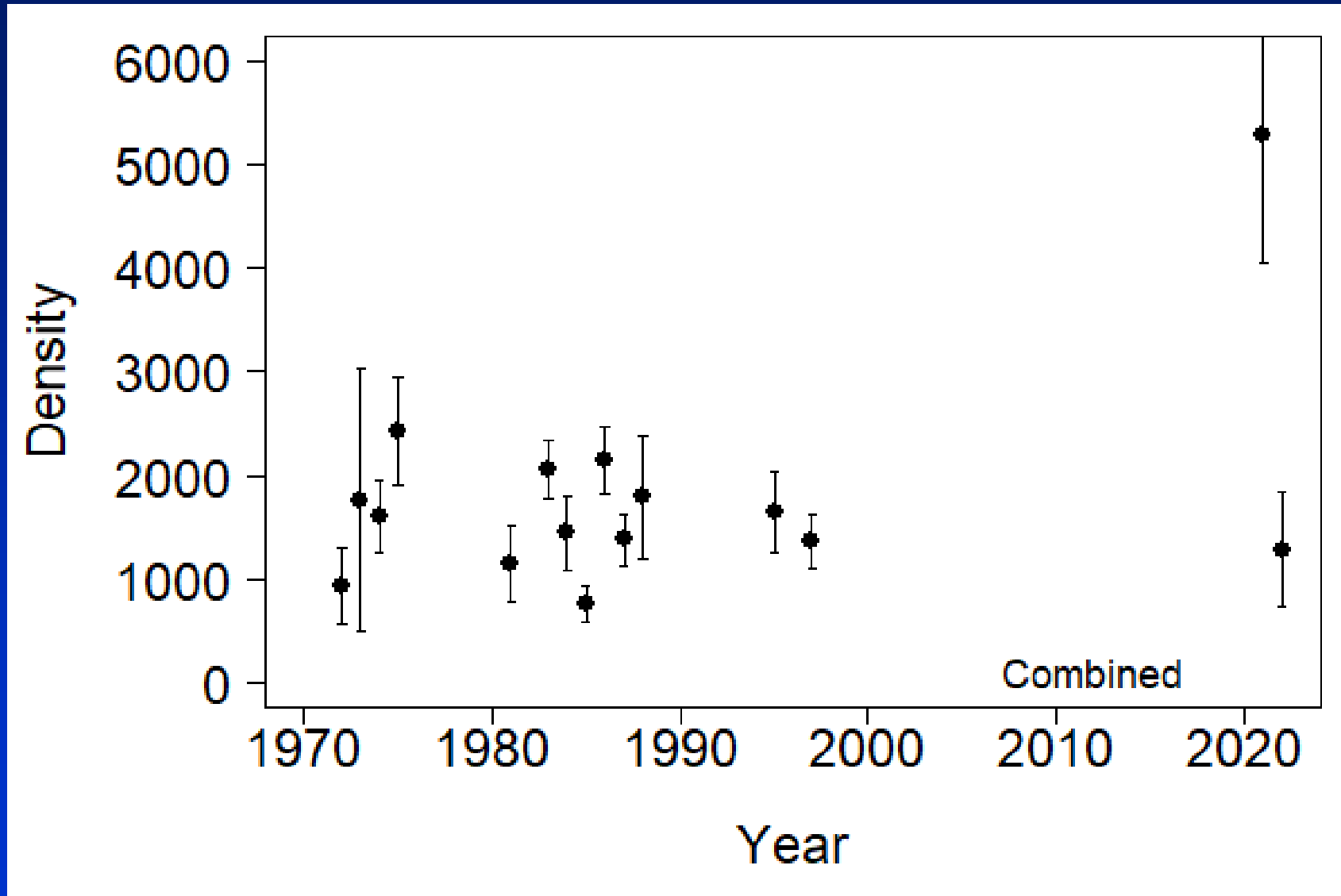


Jones Canyon Section Fish Per Mile



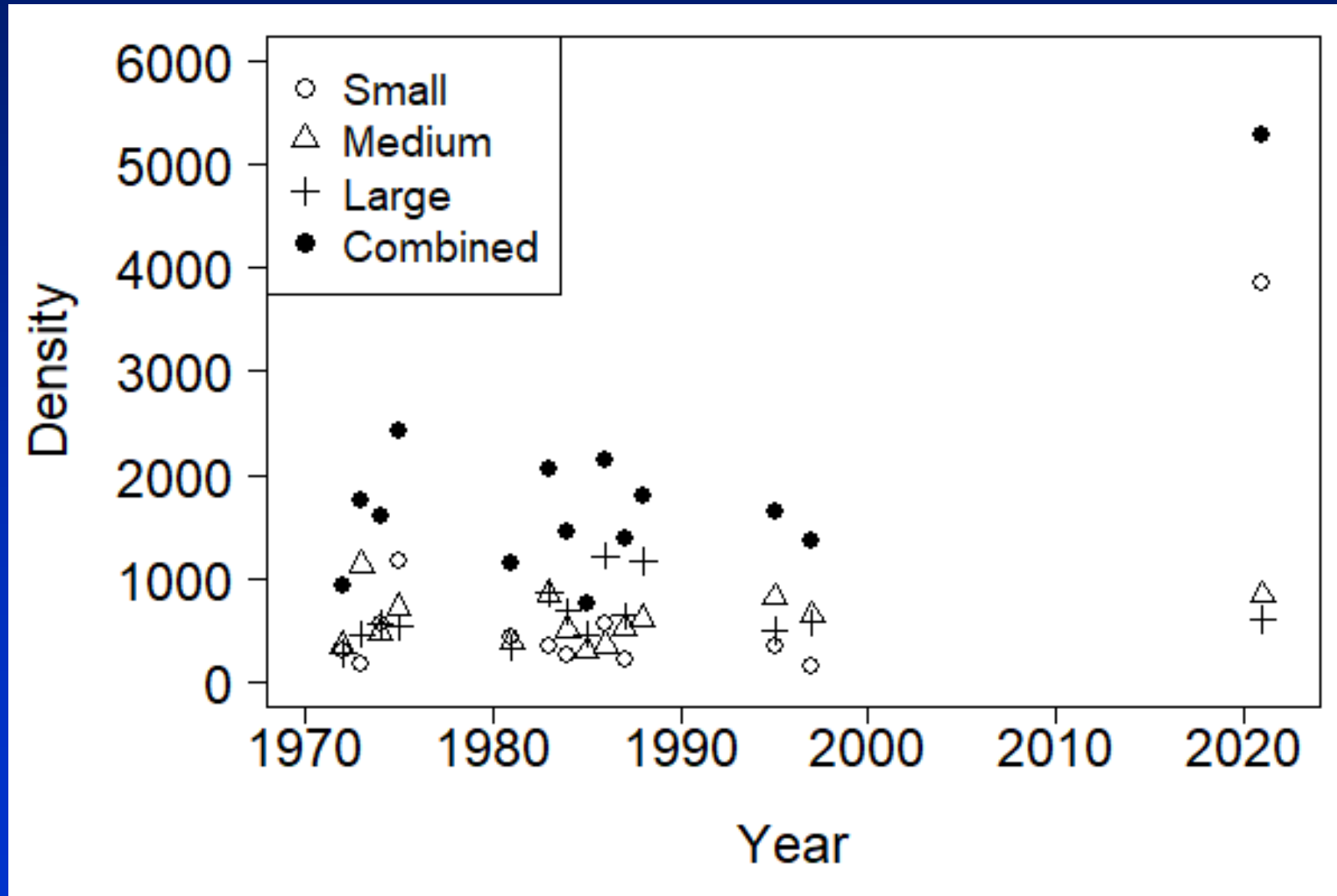


North Junction Section Fish Per Mile





North Junction Section Fish Per Mile





Smallmouth Bass



Findings

- Distributed from Ferry Canyon (RM 26) to Mouth
- PIT tagged individual displaying long migration patterns
- Leaving the Deschutes in September
- Re-entering the Deschutes April-June
- No evidence of Natural Reproduction



Status Summary – All Species

- Steelhead Returns Low
- Wild spring Chinook Returns are Critical
- Fall Chinook Returns are Robust
- Redband Trout Densities are Good
- Smallmouth Bass continue to Summer Occupy lower 12 miles





Status Summary – Steelhead Fishery 2024

Steelhead angling and retention currently open under permanent rule

- Per Deschutes Steelhead Fishery Framework:
 - 9,900 Wild Steelhead Over Bonneville between July 1 – July 31
 - 23,100 Wild Steelhead Over Bonneville between July 1 – August 31
- Total Unmarked Steelhead thus far, July 1-14 = 6,844
- 16 days remaining in July to Exceed 18,700

Thanks to

**U.S.F.W.S. Sport Fish Restoration
Warm Springs Tribe Natural Resources
Warm Springs National Fish Hatchery
Round Butte Fish Hatchery
Portland General Electric
ODFW Trap Operators, Creelers
ODFW Michelle Jones, Biometrician**

