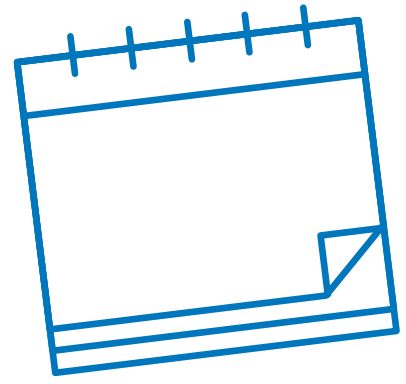


BY THE NUMBERS

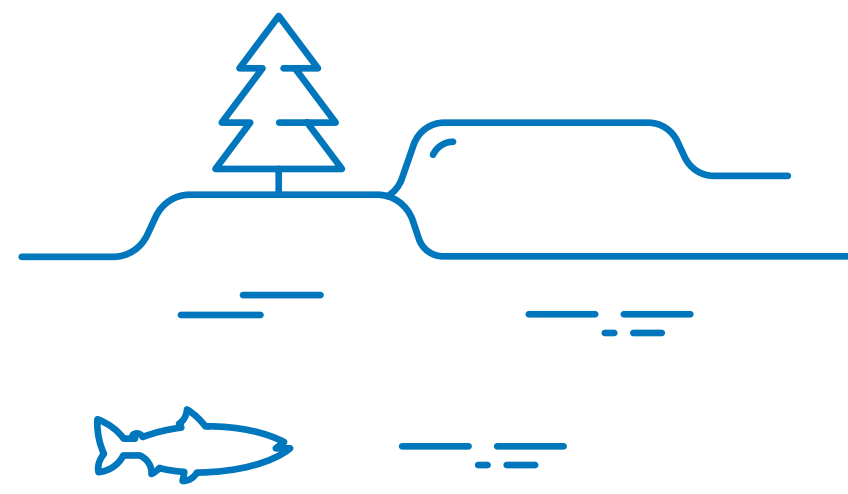
Water Quality

Study of the Pelton Round Butte Project
and the Lower Deschutes River



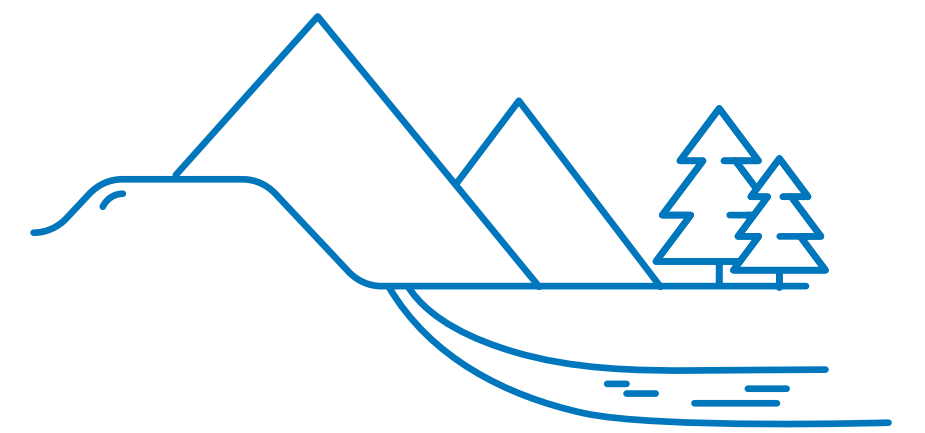
2015-2017

years data were collected



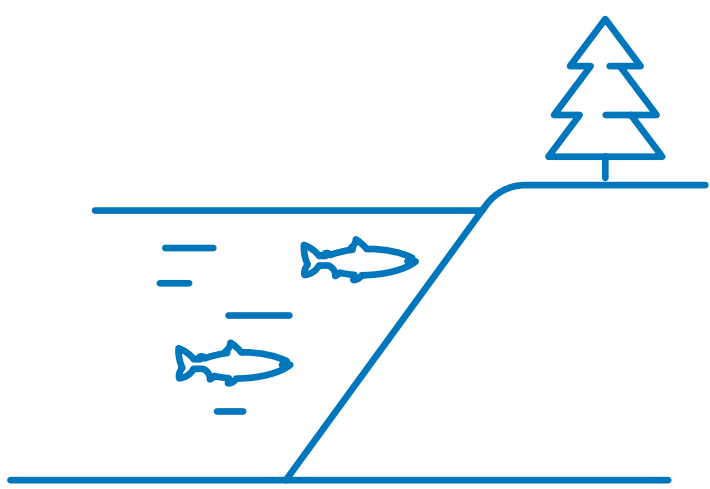
12

sites sampled in the
Lower Deschutes River



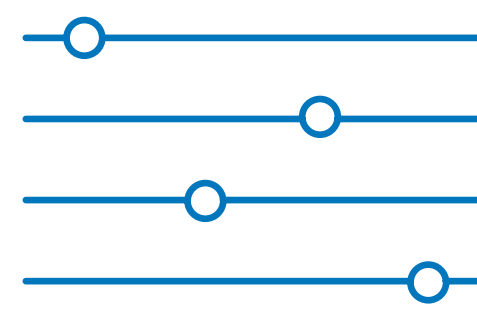
11

tributaries sampled



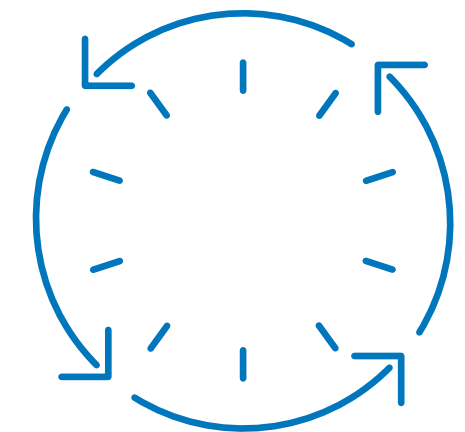
6

sites sampled in
the reservoirs



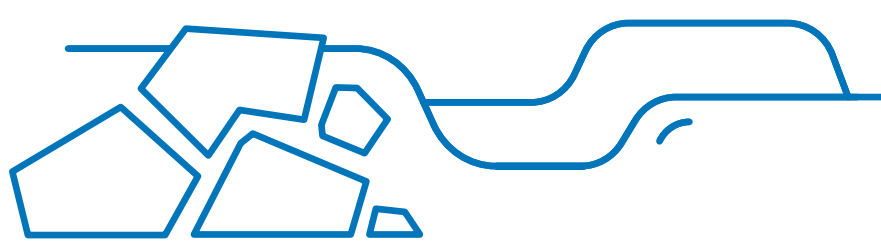
23

parameters measured



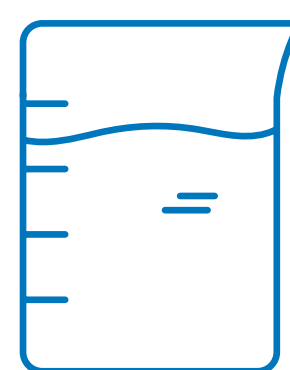
226

days spent sampling



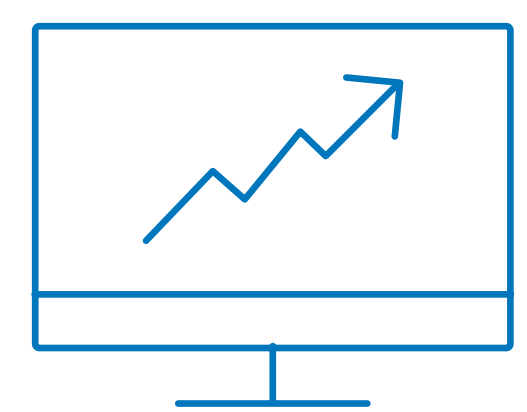
645

rocks scraped for
periphyton samples



1997

year historical water quality
study was conducted



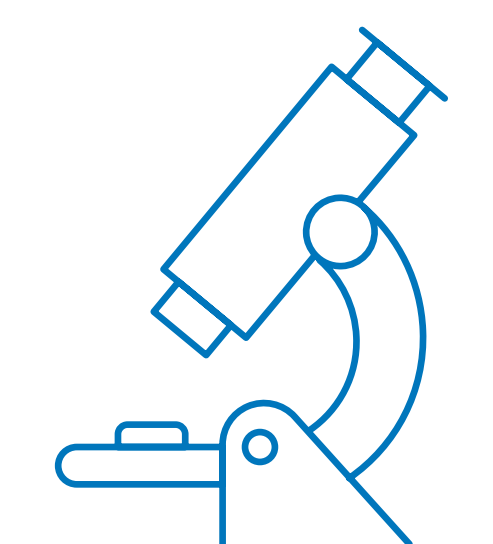
4

models developed
and tested



11

scenarios modeled



9,500+

water quality data points
measured in a lab



13

PGE staff involved in
data collection