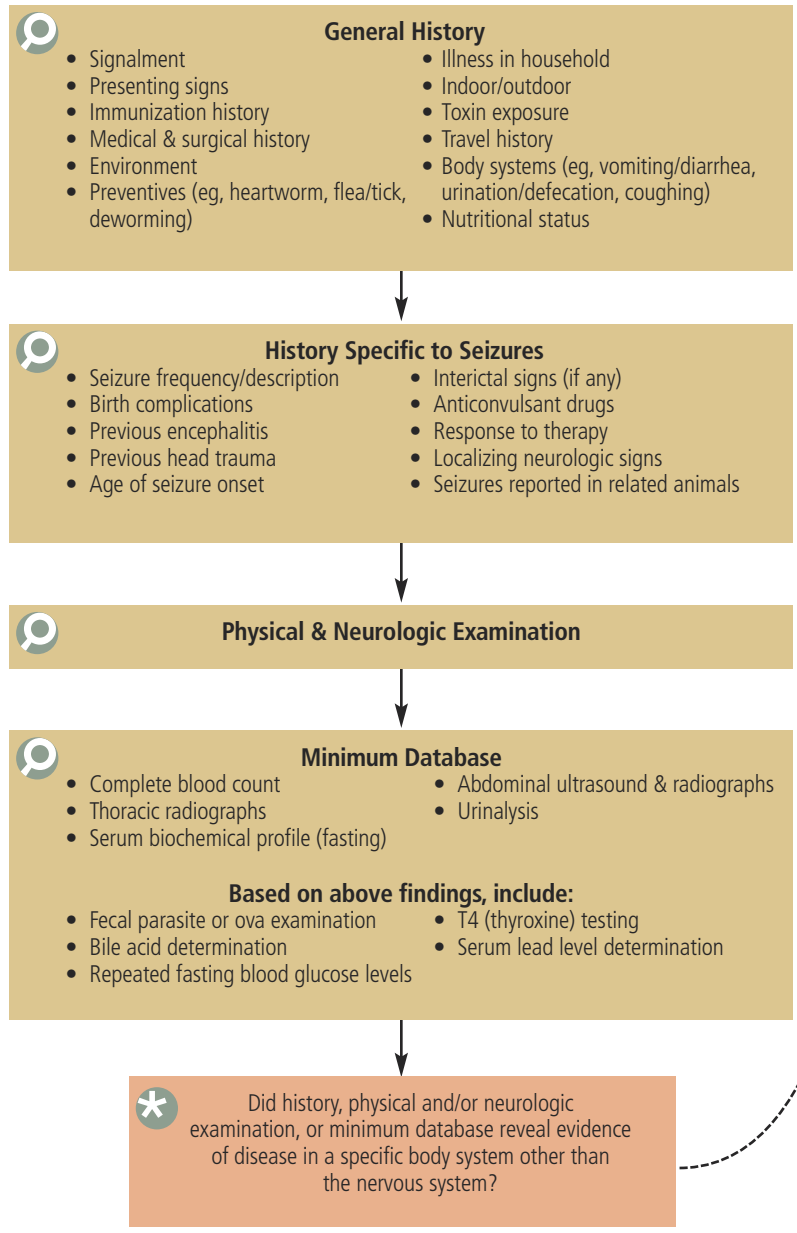


# Seizures

Richard A. LeCouteur, BVSc, PhD,  
Diplomate ACVIM (Neurology) & ECVN  
University of California–Davis



Investigation
 Diagnosis
 Treatment
 Result

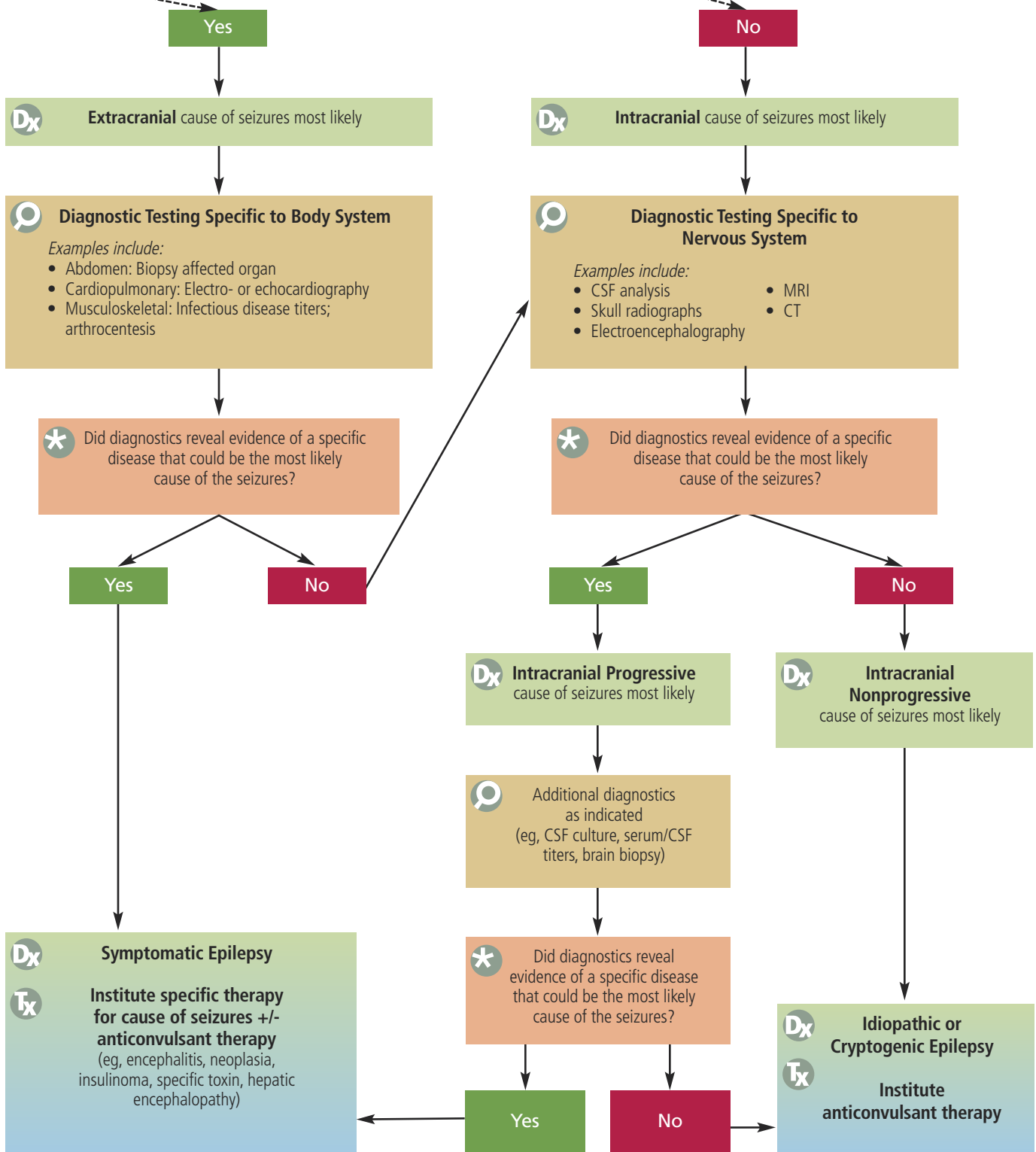
**Epilepsy Definitions<sup>1</sup>**

*Symptomatic epilepsy* is diagnosed when a known or identified disorder of the central nervous system is determined to cause seizures.

*Cryptogenic epilepsy* is diagnosed when seizures are suspected to be symptomatic, but an underlying cause cannot be determined.

*Idiopathic epilepsy* is diagnosed when an underlying possible cause for seizures (other than hereditary factors) cannot be determined.

See Aids & Resources, back page, for references & suggested reading.



CSF = cerebrospinal fluid; CT = computed tomography; MRI = magnetic resonance imaging

*This algorithm can be downloaded and printed for use in your clinic at [cliniciansbrief.com](http://cliniciansbrief.com).*