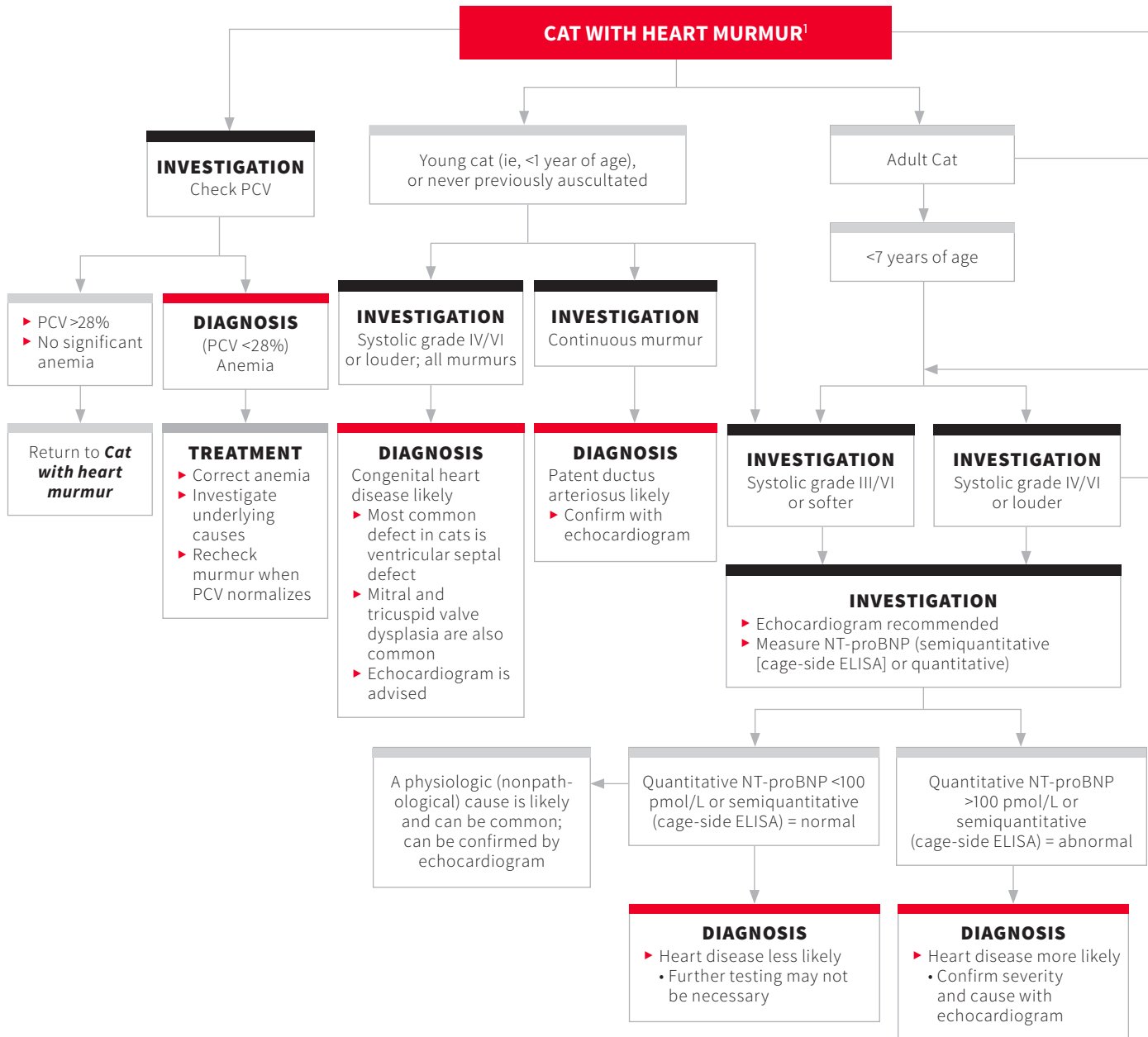


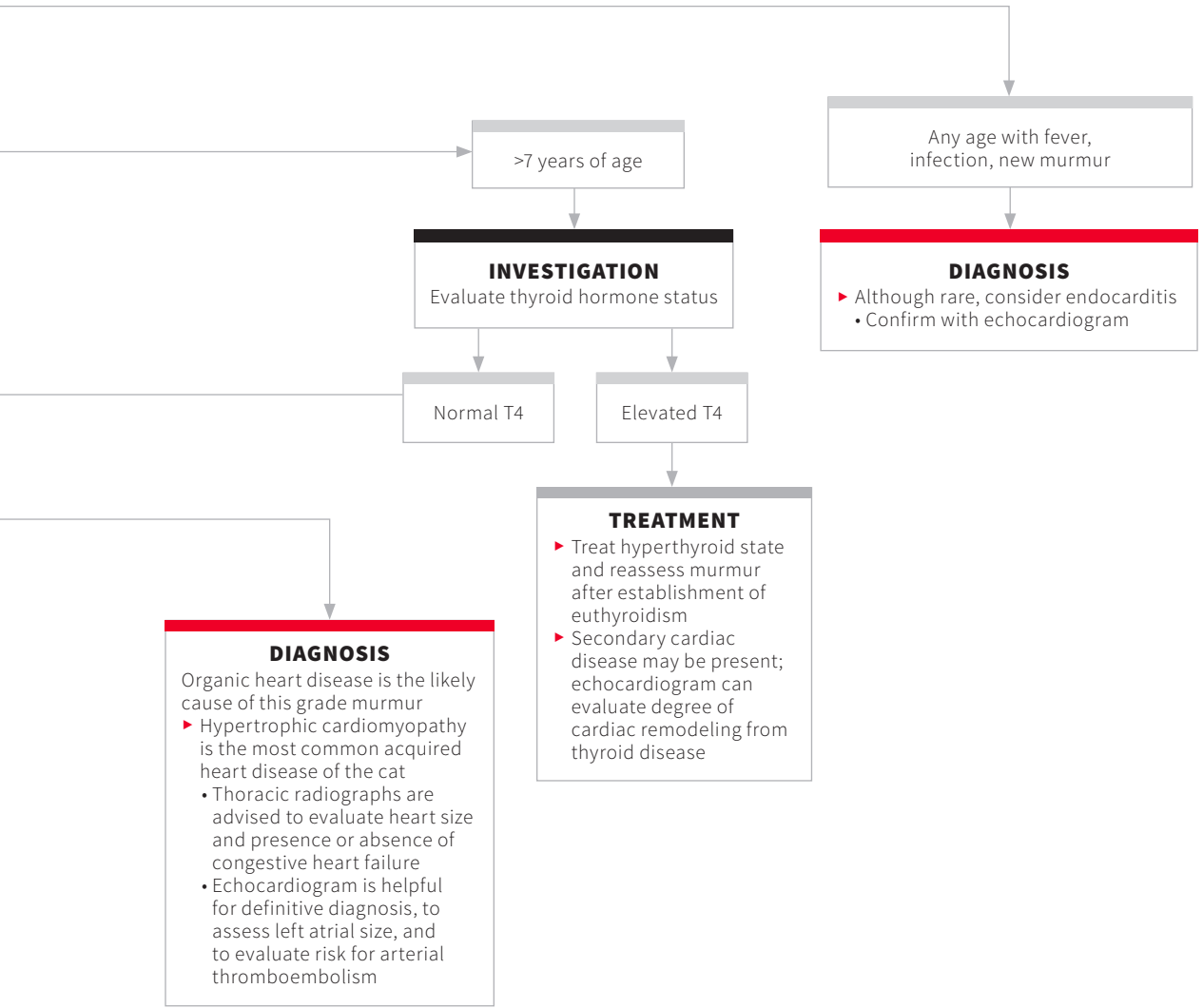
HEART MURMURS IN CATS

Brian A. Scansen, DVM, MS, DACVIM (Cardiology)*
The Ohio State University



NT-proBNP = N-terminal pro-B type natriuretic peptide
PCV = packed cell volume
T4 = thyroid hormone assay

*Byline reflects author information on original publication. On publication of this collection, the author's current affiliation is Colorado State University.



Reference

1. Côté E, Edwards NJ, Ettinger SJ, et al. Management of incidentally detected heart murmurs in dogs and cats. *J Am Vet Med Assoc.* 2015;246(10):1076-88.