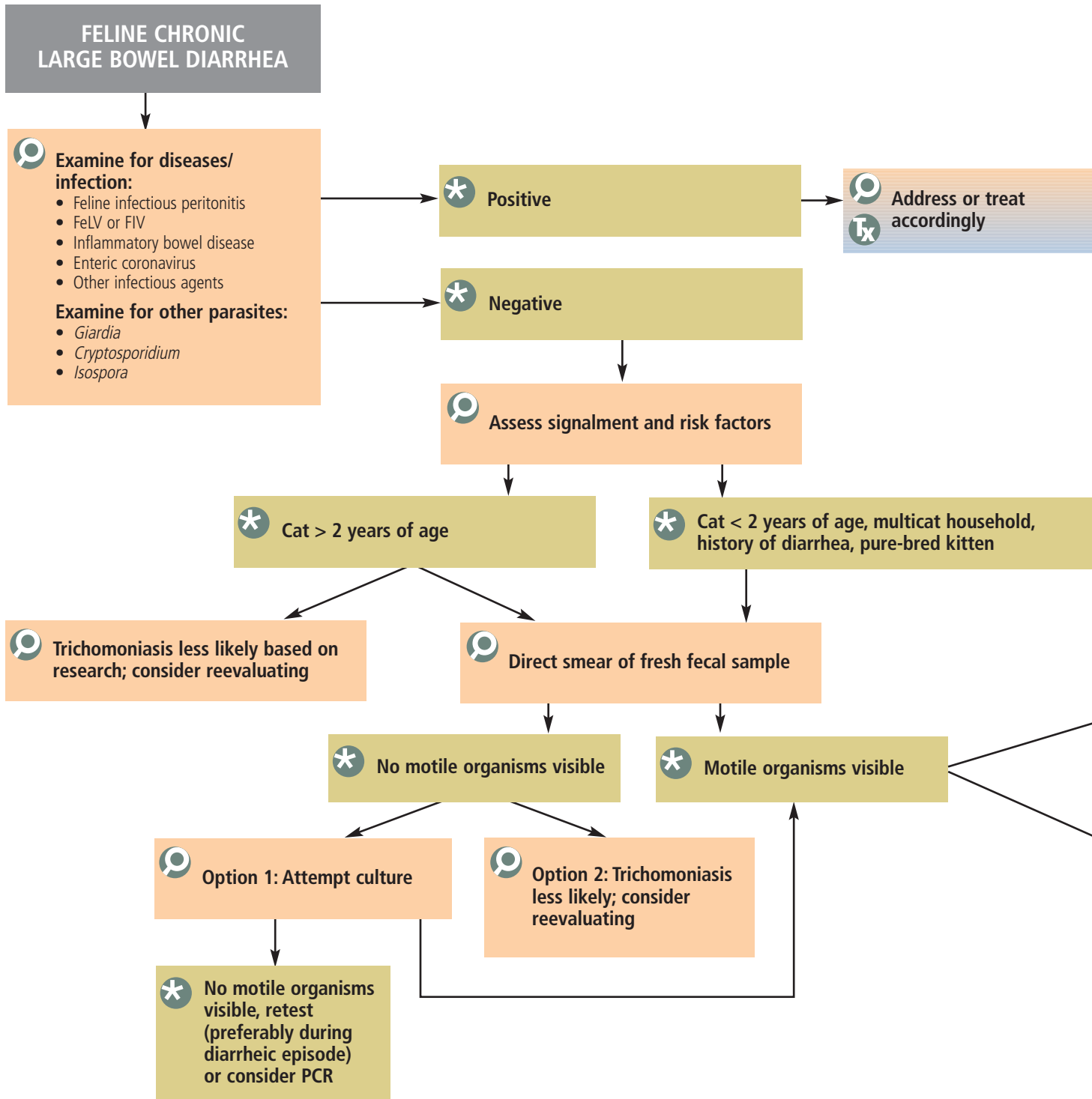


diagnostic tree

Heather D. Stockdale, MS, and Byron L. Blagburn, PhD, Auburn University

Feline Chronic Large Bowel Diarrhea

GASTROENTEROLOGY



FeLV = feline leukemia virus; FIV = feline immunodeficiency virus; PCR = polymerase chain reaction

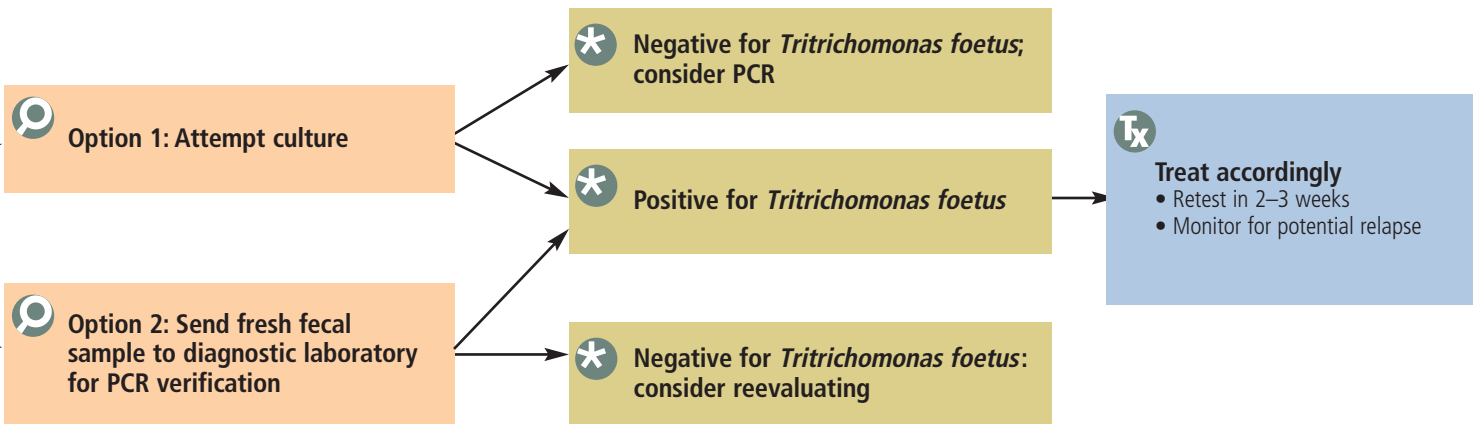
Clinical Signs of Diarrhea

Small Bowel

- Large amounts of stool
- Little or no increase in frequency
- Little or no mucus
- Excess gas
- If blood present—tarry, black
- May be associated with vomiting
- Weight loss possible

Large Bowel

- Small amounts of stool
- Increase in frequency
- Increased amounts of mucus
- Tenesmus
- If blood present—red



Dx Diagnosis

I Investigation

***** Result

Tx Treatment