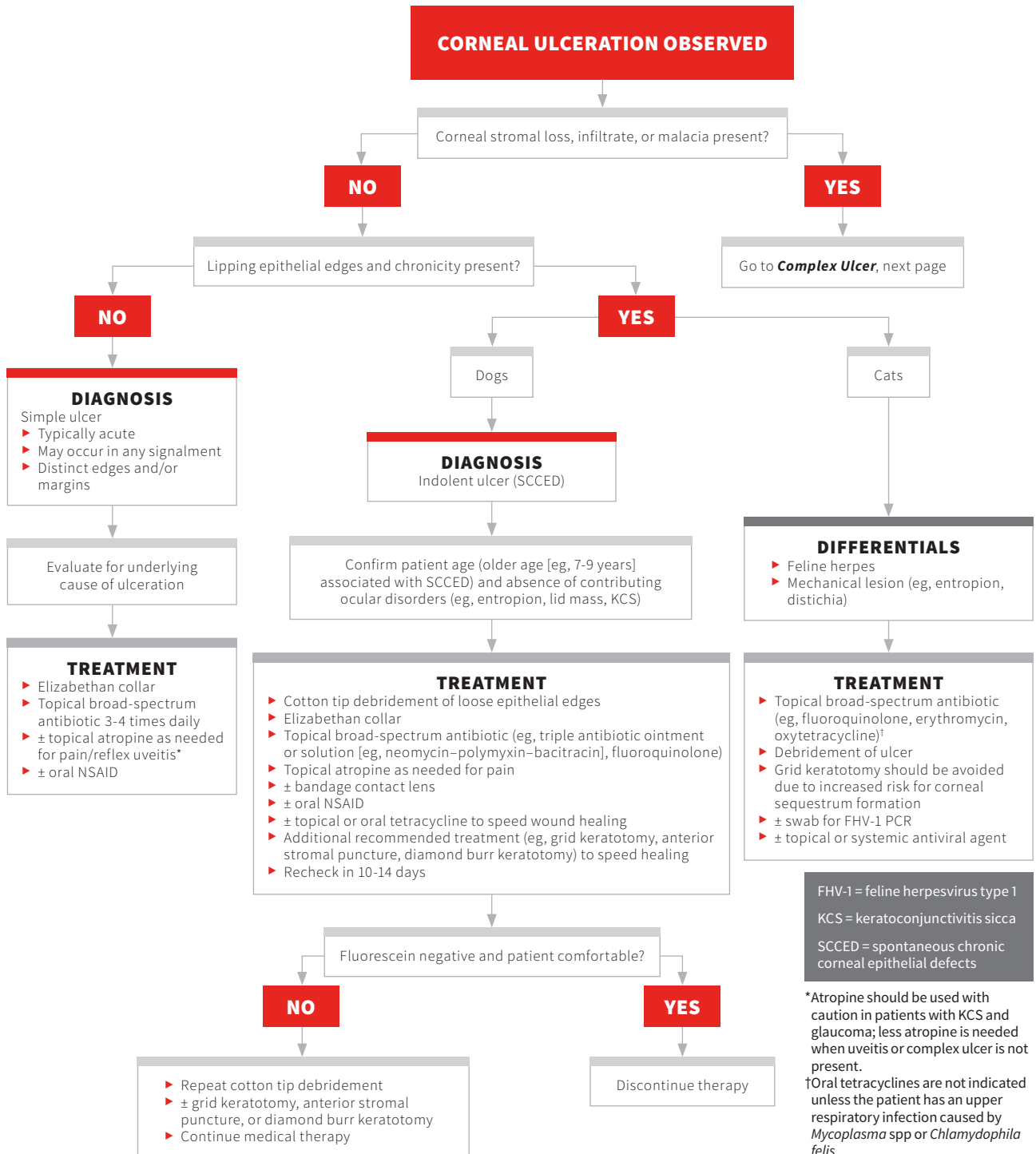


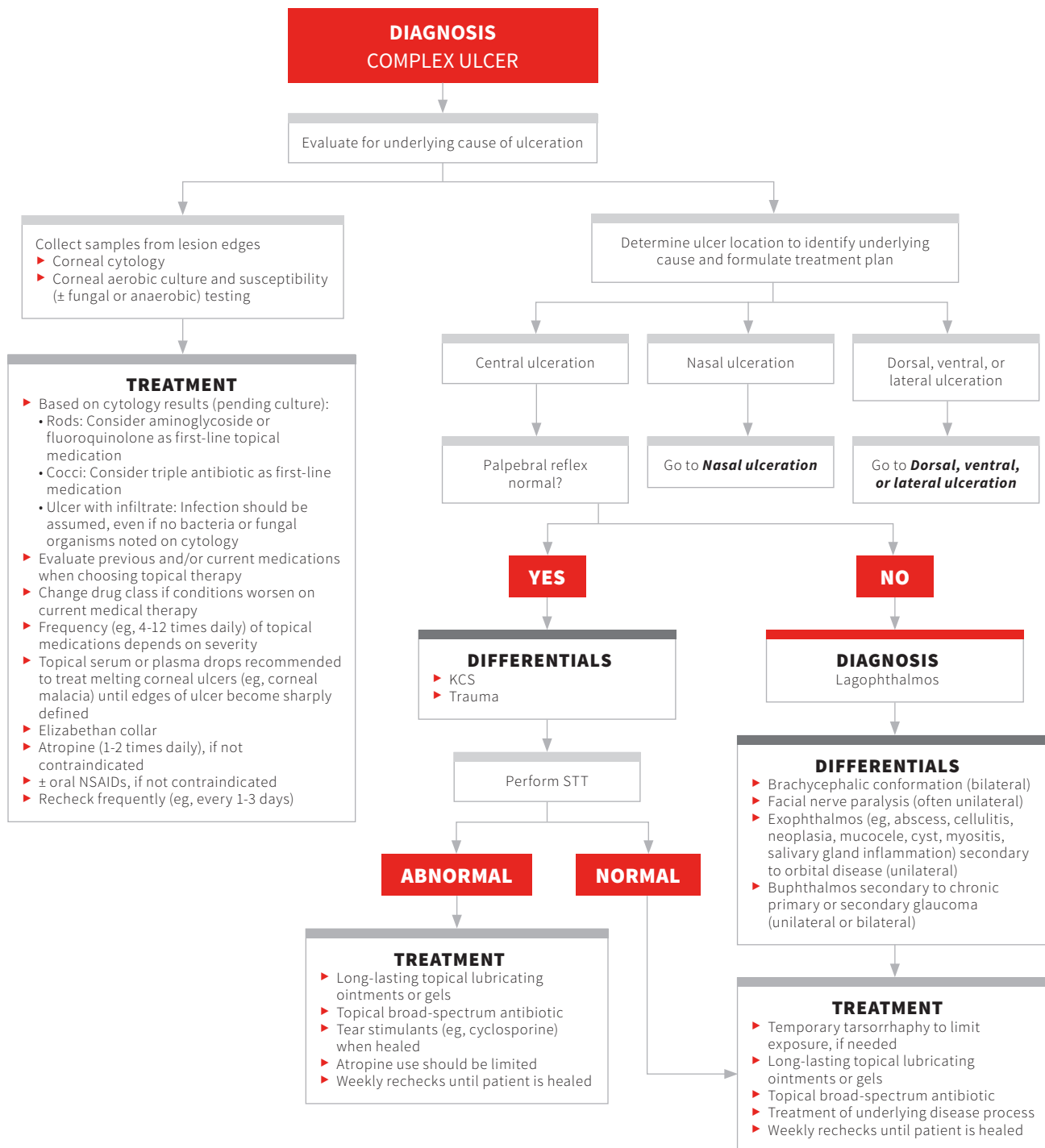
CORNEAL ULCERATION

Renee Carter, DVM, DACVO
Louisiana State University

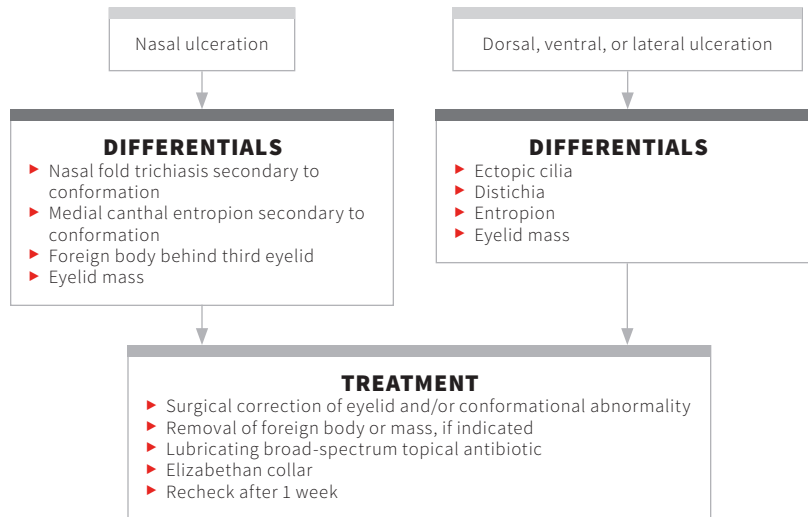


FHV-1 = feline herpesvirus type 1
KCS = keratoconjunctivitis sicca
SCCED = spontaneous chronic corneal epithelial defects

*Atropine should be used with caution in patients with KCS and glaucoma; less atropine is needed when uveitis or complex ulcer is not present.
†Oral tetracyclines are not indicated unless the patient has an upper respiratory infection caused by *Mycoplasma* spp or *Chlamydomphila felis*.



KCS = keratoconjunctivitis sicca
STT = Schirmer tear test



Redefining Surgery Recovery

Fiberglass kennels and cages from Mason Company are quieter, softer, warmer, attractive and more durable than cold metal.

Quiet Cottages™ and Heated Recovery Cages are the stacked caged system of the future.

- Molded, solid-surface fiberglass cage bodies have contemporary look and feel.
- Available with individual built-in drains to ensure sanitary conditions.
- Warmer, quieter and less reflective than stainless steel to reduce fear, anxiety and stress in animals.



FEAR FREE
Preferred Product Program

A Fear Free Preferred Product



The UltraBase™ Above Floor system is available only from Mason Company.

- One piece fiberglass floor with 6" sides eliminates leaks.
- Individual drains to prevent cross contamination.
- Stainless steel side panels for durability and ease of cleaning.



Visit our website to download this helpful guide!



MASON
COMPANY SINCE 1892
Trusted Animal Housing Solutions

(800) 543-5567
www.MasonCo.com/surgery
info@MasonCo.com