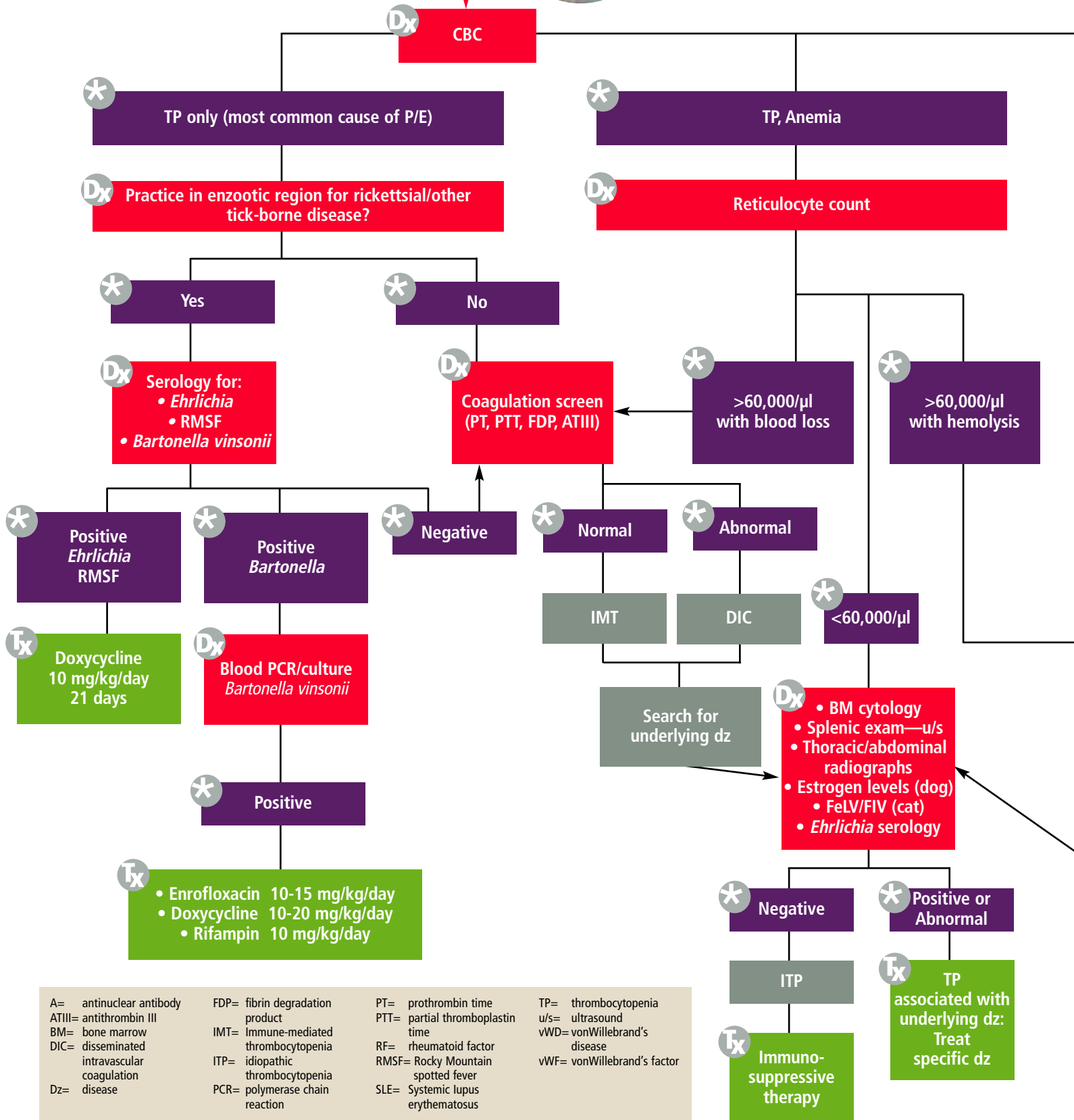


# diagnostic tree

## PETECHIAE / ECCHYMOSES (P/E)



Petechiae and ecchymoses on the ventral abdomen of a dog secondary to thrombocytopenia, the most common cause of this finding

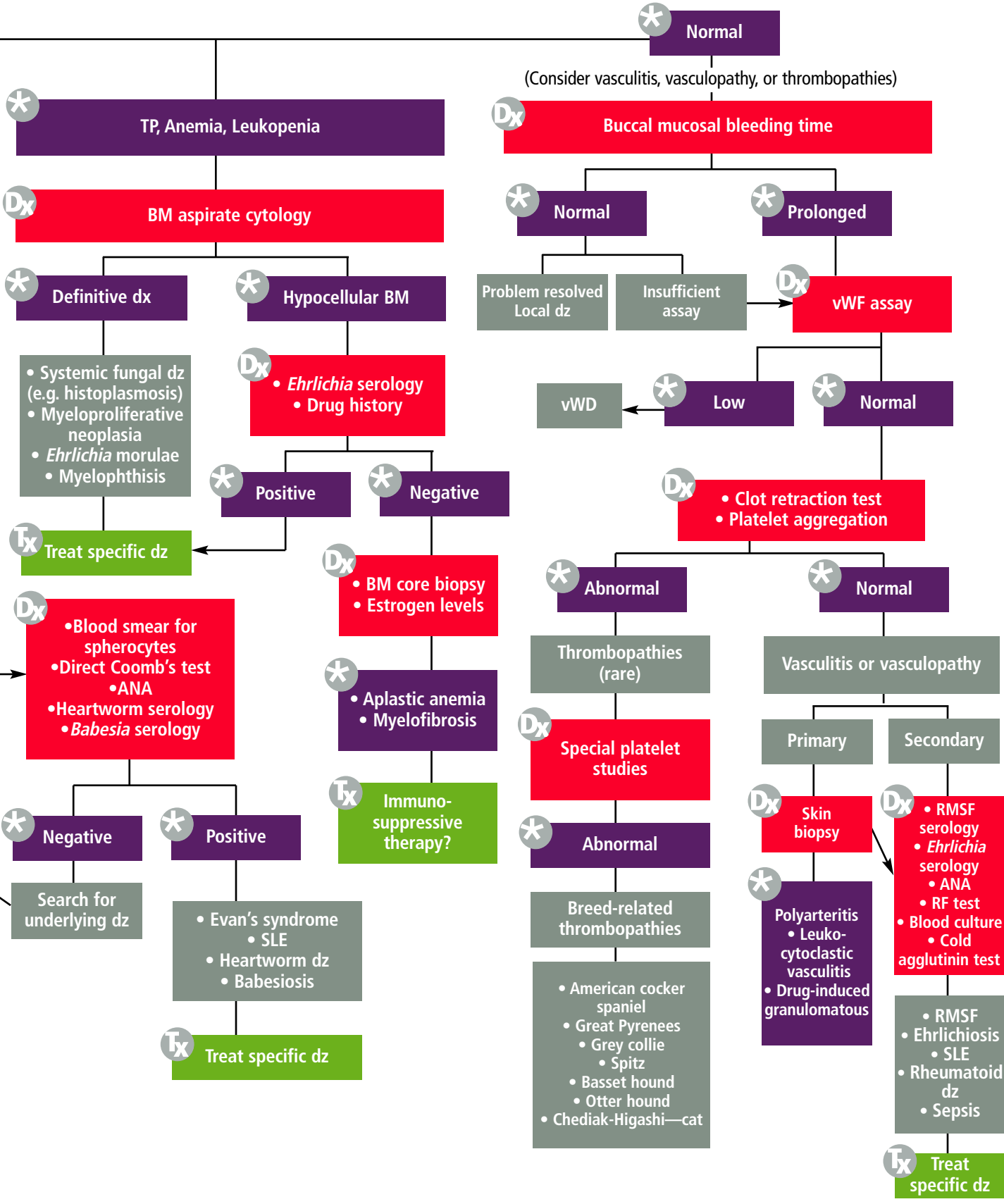


A= antinuclear antibody    FDP= fibrin degradation product    PT= prothrombin time    TP= thrombocytopenia  
 ATIII= antithrombin III    IMT= Immune-mediated thrombocytopenia    PTT= partial thromboplastin time    u/s= ultrasound  
 BM= bone marrow    DIC= disseminated intravascular coagulation    RF= rheumatoid factor    vWf= vonWillebrand's disease  
 Dz= disease    PCR= polymerase chain reaction    SLE= Systemic lupus erythematosus    wWf= vonWillebrand's factor

**Dx** DIAGNOSIS

**Tx** TREATMENT

**\*** RESULT



PETECHIAE / ECCHYMOSES (P/E)