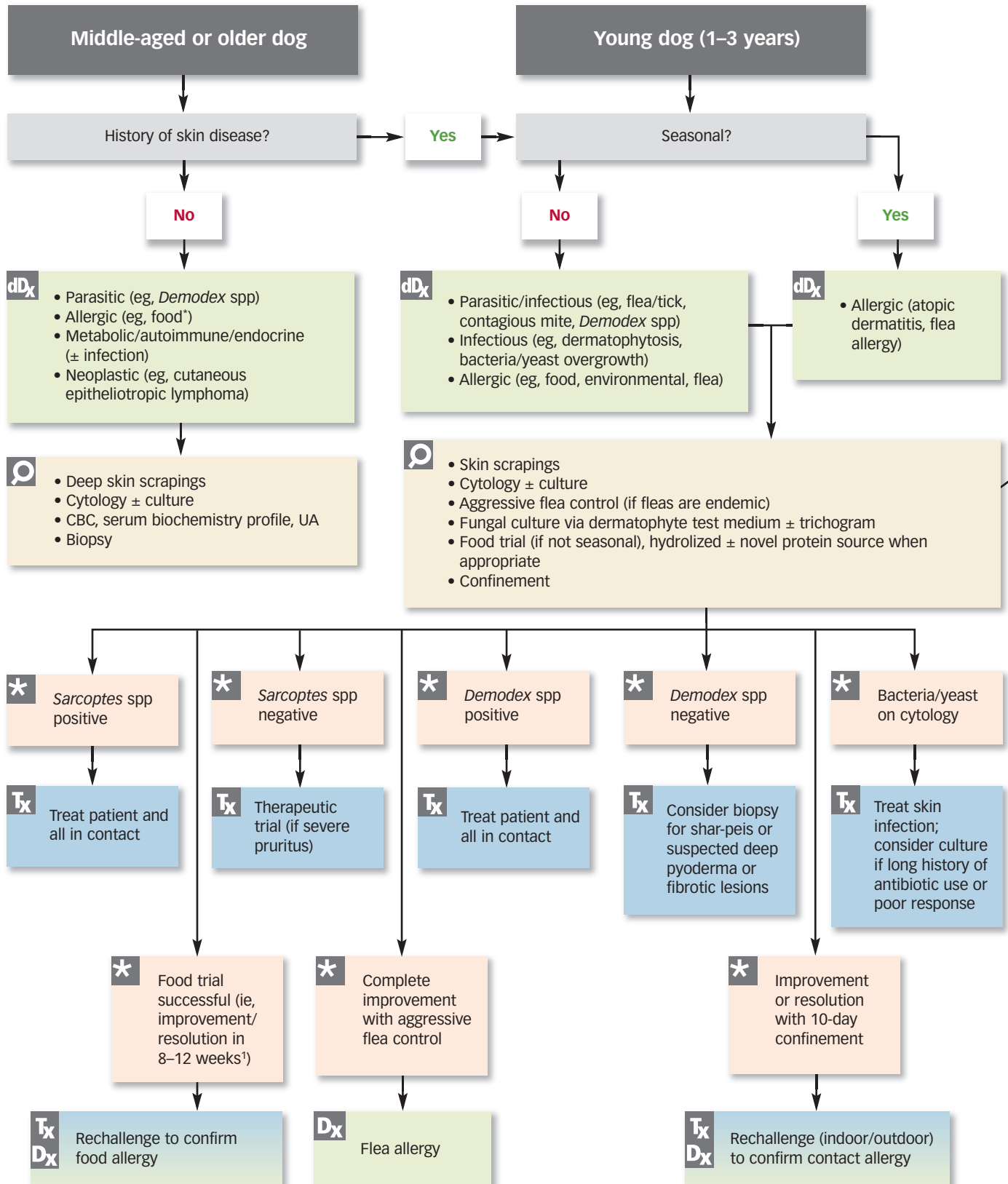
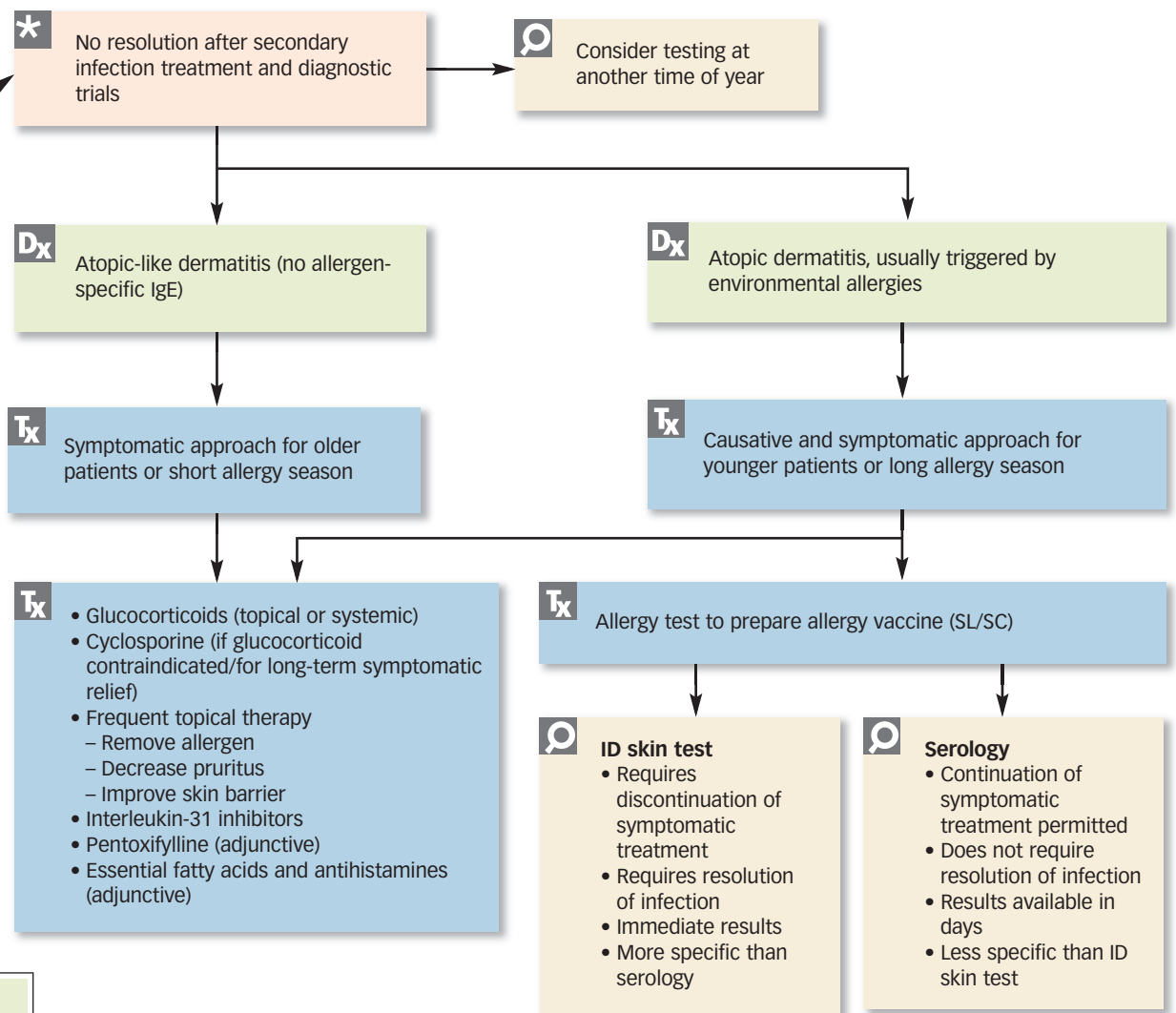


Canine Pruritic Dermatitis





Dx	Diagnosis
dDx	Differential Diagnosis
🔍	Investigation
Tx	Treatment
*	Results

ID = intradermal, SL = sublingual, UA = urinalysis

* Unlike food allergies, environmental and flea allergies do not commonly develop later in life; therefore, environmental and flea allergies are unlikely in middle-aged dogs unless the patient has a history of geographic movement or environmental change.

See Aids & Resources, back page, for references & suggested reading.