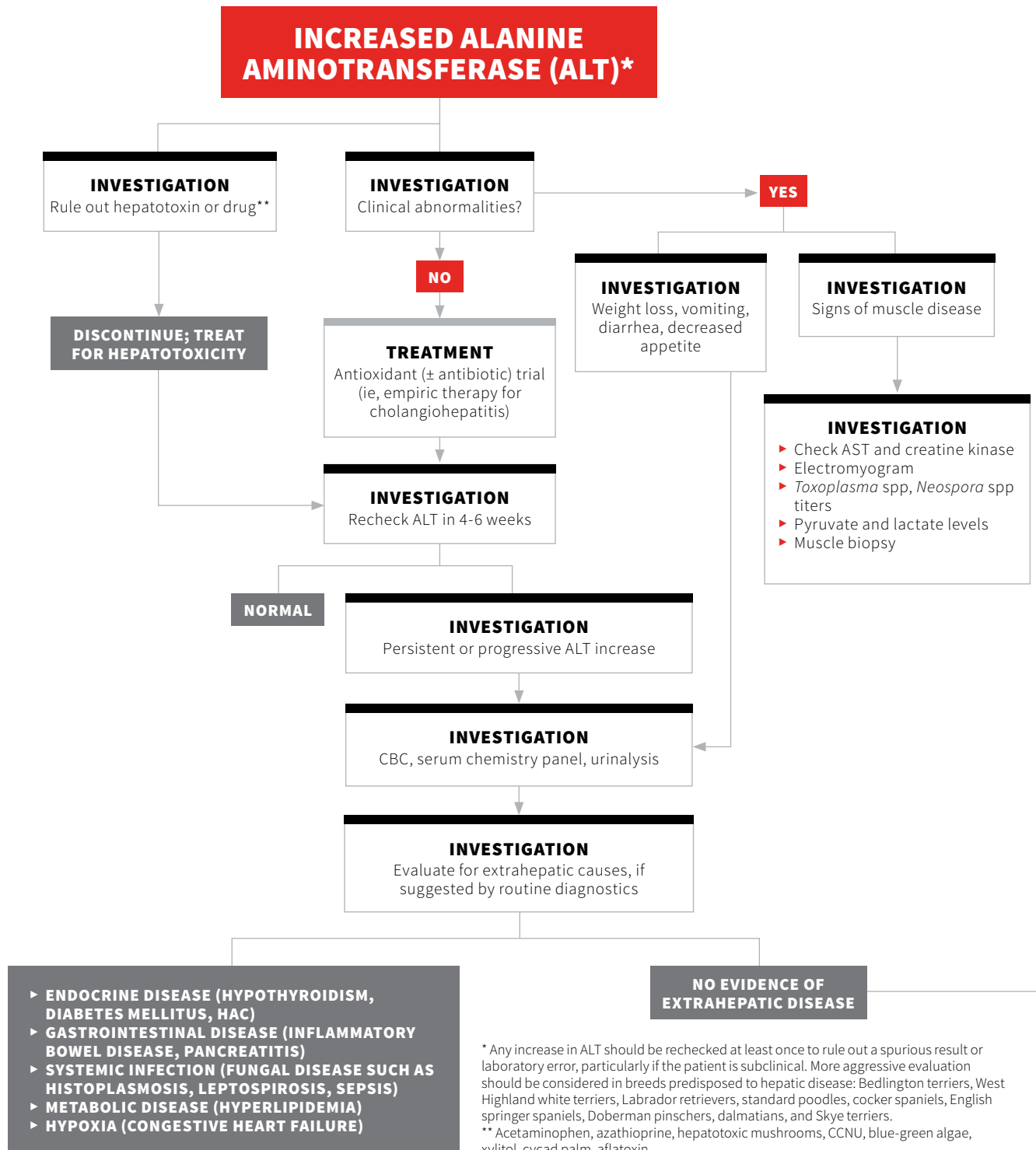
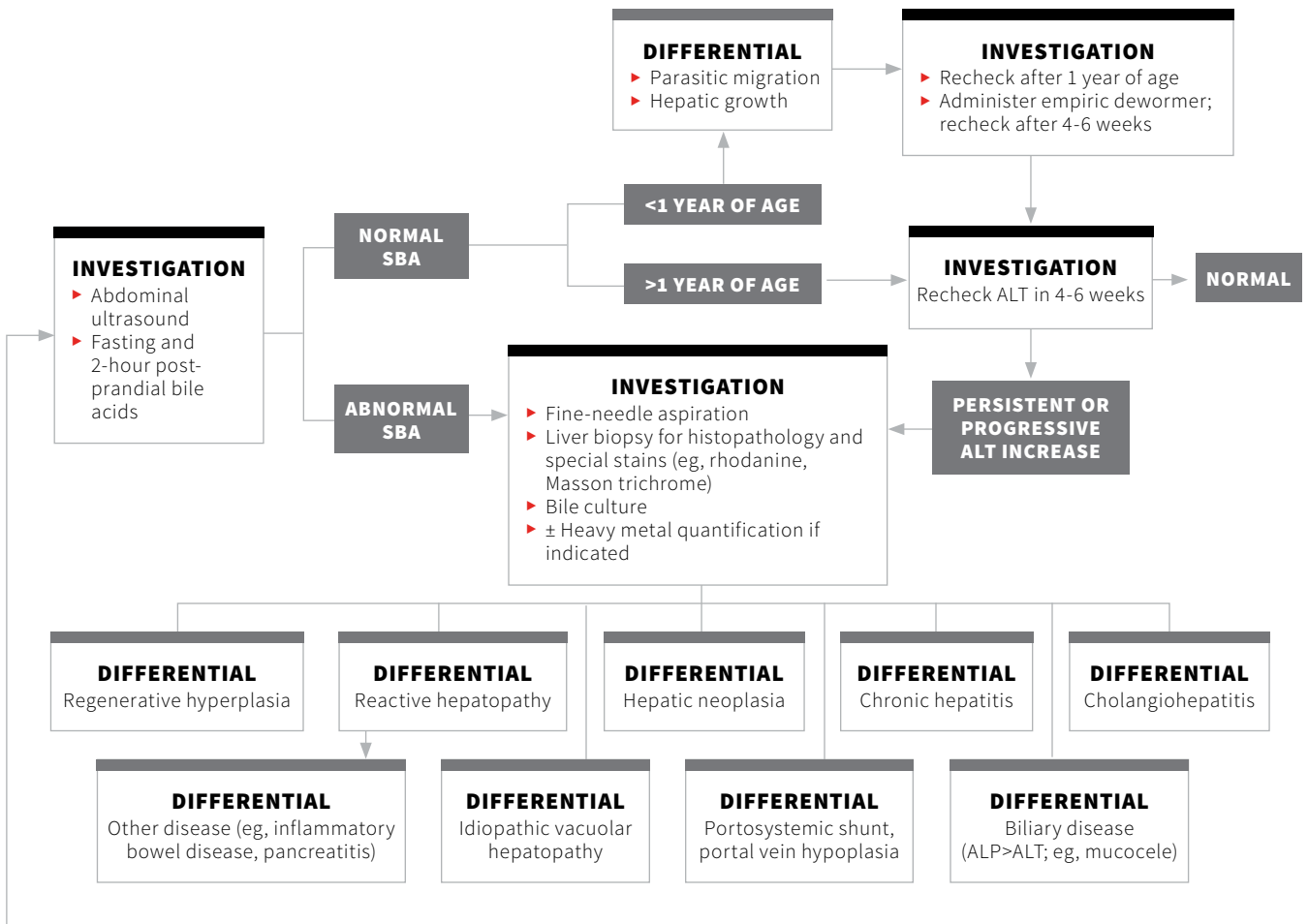


INCREASED LIVER ENZYMES IN DOGS: ALT

Julie Allen, BVMS, MS, MRCVS, DACVIM (SAIM)
North Carolina State University

INCREASED ALANINE AMINOTRANSFERASE (ALT)*





ALP = alkaline phosphatase
 ALT = alanine aminotransferase
 AST = aspartate transaminase
 HAC = hyperadrenocorticism
 SBA = serum bile acids

See page 108 for suggested reading.