



NAVIGATION & OPERATIONS

Situational Awareness

Vessel Tracking

Configuration

Providing granular detail
on fleet activity



Discover the digital tools to streamline fleet operations

OneOcean Operations connects data from ship to shore, visualising where regulations are in effect and where ships are in relation to them.

Data overlays can be toggled on and off to interrogate voyages for clarity, context, improved situational awareness, and more accurate Electronic Record Book (ERB) reporting. It standardises information for consistency and so configurations can easily be set for an entire fleet.

The OneOcean Operations solution comprises two modules.

Vessel Tracking

Utilises AIS or GPS tracking, allowing shoreside personnel to monitor fleets anywhere in the world, all via the Platform.

Configuration

Shoreside teams can customise fleet and vessel settings and deploy them centrally. This includes passage plans, safety parameters, policy and equipment settings.

The OneOcean Operations solution is greatly enhanced when used in conjunction with OneOcean Navigation's Situational Awareness module.

Situational Awareness

This connects shoreside teams with bridge leaders and allows them to monitor a vessel or fleet's status in real-time. So, they can provide support or action when needed.

Situational Awareness

Enable active support anytime, anywhere

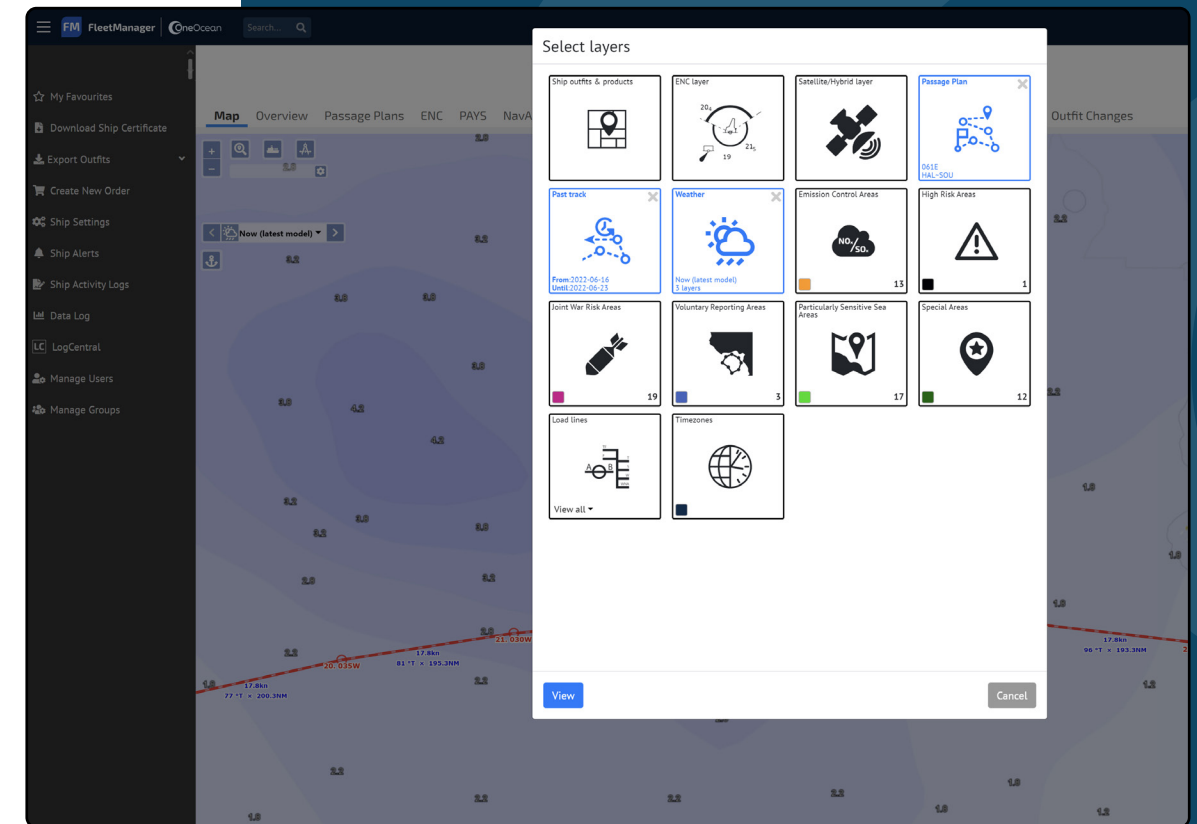
Managing vessels from shore – particularly with fleets spread across global locations – is a significant challenge for shoreside teams. Providing effective support can prove difficult when vital information exchange is delayed or missing.

OneOcean Navigation's Situational Awareness module connects shoreside teams directly with vessels. The shoreside team can also access real-time visualisation of each ship in their fleet. The connection and visualisation together provide the situational awareness needed to support each individual vessel.

Satellite and terrestrial AIS or GPS tracks the status of a specific vessel or an entire fleet, allowing shoreside personnel to oversee safety and stay on top of voyages and performances. It provides accurate vessel positions, movements against approved passage and the ability to set up alerts for deviation notifications.

Using a multi-layered view via the Platform, shoreside teams can monitor a vessel or fleet's status to a granular level, combining voyage progress against plan and outfit status. They can see the environmental and weather impact on their current course so necessary support can be provided.

This data can be used to quickly assess each vessel and keep all stakeholders up to date on voyage progress. You can also better plan all the associated logistical requirements of transferring cargo, changing crews and maintaining vessels.



Situational Awareness

Connecting shoreside and onboard teams

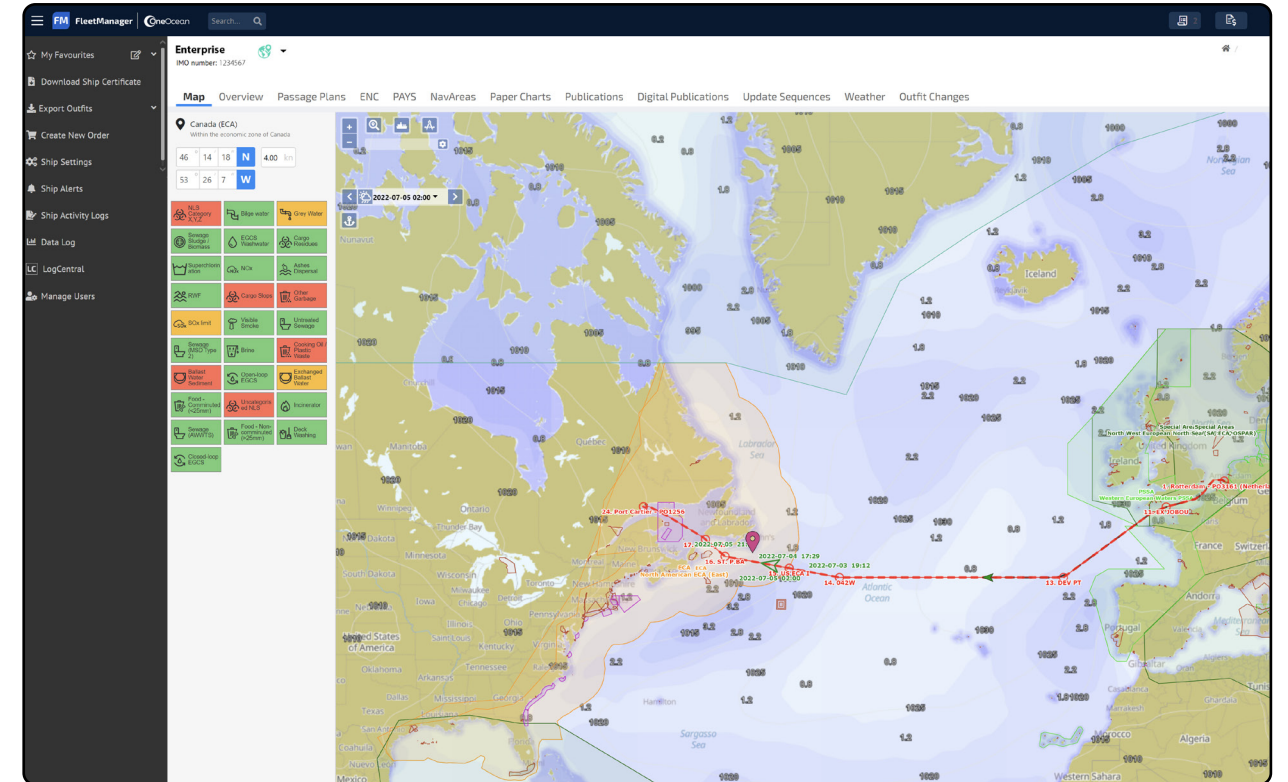
OneOcean Navigation's Situational Awareness module also allows you to:

Stay alert

See what the vessel sees through the multi-layered display, including weather, charts, ECA zones and high-risk areas. This gives onshore teams the ability to check in and provide contextualised and relevant support when it's needed the most.

Customise vessel settings

Shoreside teams can customise fleet and vessel settings and deploy down to the vessel. These include safety parameters and policy settings such as wave height, wind speed and under keel clearance (UKC) minimum requirements. It also includes equipment settings that inform the environmental regulations displayed to crew members. These can be tailored to one vessel, types of vessels or the full fleet, giving you complete control from one place.



Vessel Tracking

One view of your global fleet

Managing a fleet of vessels that are scattered across the globe presents a significant challenge for shoreside teams. Knowing the location of each vessel in the fleet, whether there are any risks evolving and if the vessels are running to schedule is crucial. It's vital that updates and communications from the shoreside team can be received.

Using AIS or GPS tracking, OneOcean Operation's Vessel Tracking module is an intuitive, integrated software solution that enables shoreside personnel to monitor vessels and stay on top of voyages anywhere in the world.

By combining **Vessel Tracking** and **Situational Awareness**, all elements of the voyage can be overlaid for a contextualised visual of the vessel's situation at a frequency chosen by the business.

A visual display through the Platform shows:

- Accurate vessel positions
- Movement against approved passage plans
- Alerts when a ship deviates from route

Highlights

AIS or GPS tracking

Shoreside vessel monitoring

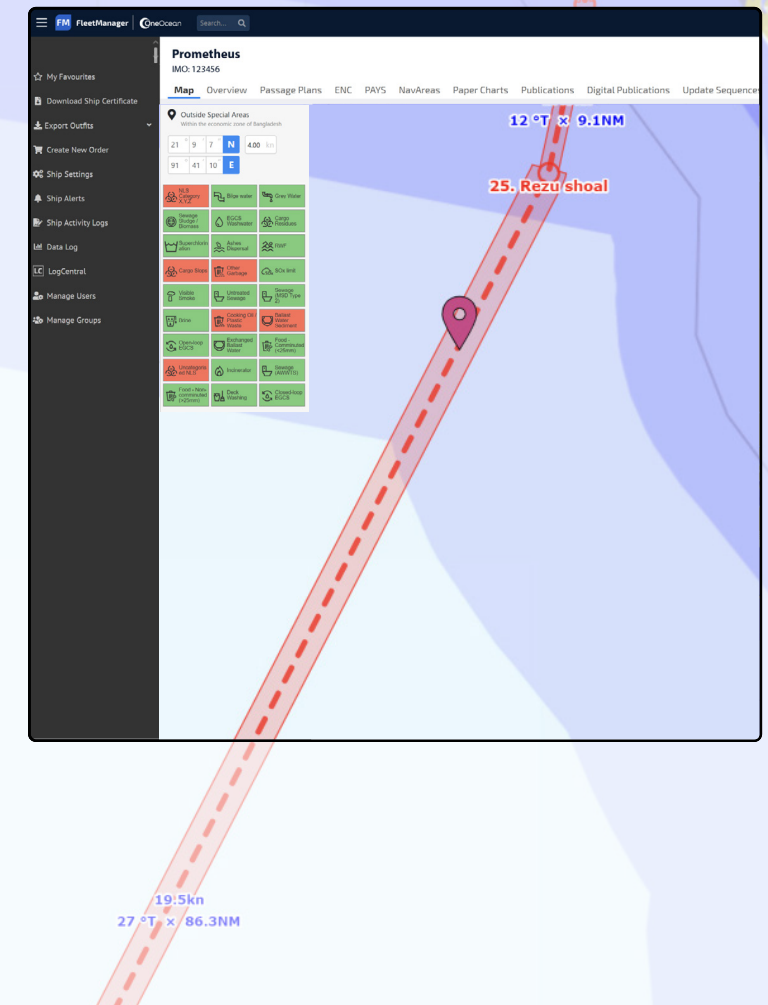
Visual display on the Platform

Benefits

Stay on top of all voyages

Integrated software solution

Review, edit and approve outfit requirements



Configuration

Keeping shoreside teams in control

Overseeing fleet operations and ensuring compliance from shore can be a demanding task. It involves managing multiple vessels with different destinations and cargo, each facing varying obstacles on route.

The Configuration module of OneOcean Operations lets shoreside teams customise fleet and vessel settings and deploy them to the vessels. These include parameters for passage plans, and safety parameters and policy settings, such as wave height, wind speed and under keel clearance (UKC) minimum requirements.

It also covers equipment settings that inform the environmental regulations displayed to crew members. To provide an added layer of company protection from violations and infractions, parameters for waste streams can be set above and beyond the standards of regulations in force.

This information appears to users of the Platform aboard the vessel, meaning there is never any confusion or ambiguity on compliance or when company policies apply. Customisation is tailored to a single vessel, types of vessels or the full fleet, giving you complete control from one place.

Highlights

Parameters for safety, policy and passage plans

Environmental regulation display

Visualisation on ship and shore

Benefits

Customise vessel, group or fleet settings

Added protection from violations and infractions

Situational Awareness

Give crews and vessels the support they need exactly when they need it.

Vessel Tracking

Improve fleet visibility through a single platform approach.

Configuration

Help your business and fleets stay safe and compliant.

enquiries@oneocean.com

oneocean.com/comply

