



# Enhance end-to-end vessel performance

OneOcean Perform optimises your vessel performance with in-depth data, accurate vessel modelling and expert advice from Master Mariners.





# Optimise your vessel's performance with one trusted source of insight

Whether you're a charterer or shipowner, understanding the performance of a vessel is crucial to meeting both decarbonisation and commercial objectives. But gathering the accurate information you need to stay competitive and compliant can be complex.

OneOcean Perform is an integrated and robust solution that pinpoints maritime performance challenges. It harnesses the power of both the Lloyd's Register OneOcean Platform (the Platform) and our Shoreside Routing (SSR) team to grant you unparalleled visibility into the performance of your vessel.

Combining the advisory expertise of our SSR team – consisting of 30 Master Mariners – with the solution's enhanced situational awareness capabilities and data-driven insight, you can proactively manage risk, optimise vessel performance and make informed decisions that grow profitability.

## Whatever your maritime challenge, we have the answer.

- **Vessel Performance Tracking** for complete fleet control
- **Charter Party Management** to simplify chartering
- **24/7 Route Advice** to save time, cost and fuel
- **Performance Monitoring** to minimise operational risk
- **Managed Services** that increase profitability and efficiency



# Drive proactive performance improvements

See how your operations could benefit



## Get complete control of your fleet

Improve your vessel's safety, security and operational efficiency with access to real-time tracking and high frequency, high definition weather information. **Vessel Performance Tracking** allows you to optimise current and future charters and provides enhanced situational awareness to seafarers.

- **Tracks all your vessels** at all times
- Uses **day one (D1) models** for optimal accuracy
- Merges **Automotive Identification System (AIS) signals** for low latency and high accuracy
- **14-day forecast** and historical weather visualisation
- Combined weather view, including **storms, wind, currents and waves**
- Toggle an **ENC-like layer** on and off
- **Shoreside teams and onboard teams** visualise the same data
- **Bathymetric data and navigational hazards** with a nautical map view



## Track all changes in one place

Simplify your contract handling processes, improve negotiations and avoid deviation from the charter party terms with **Charter Party Management**.

- Allows you to input and track **charter party terms**

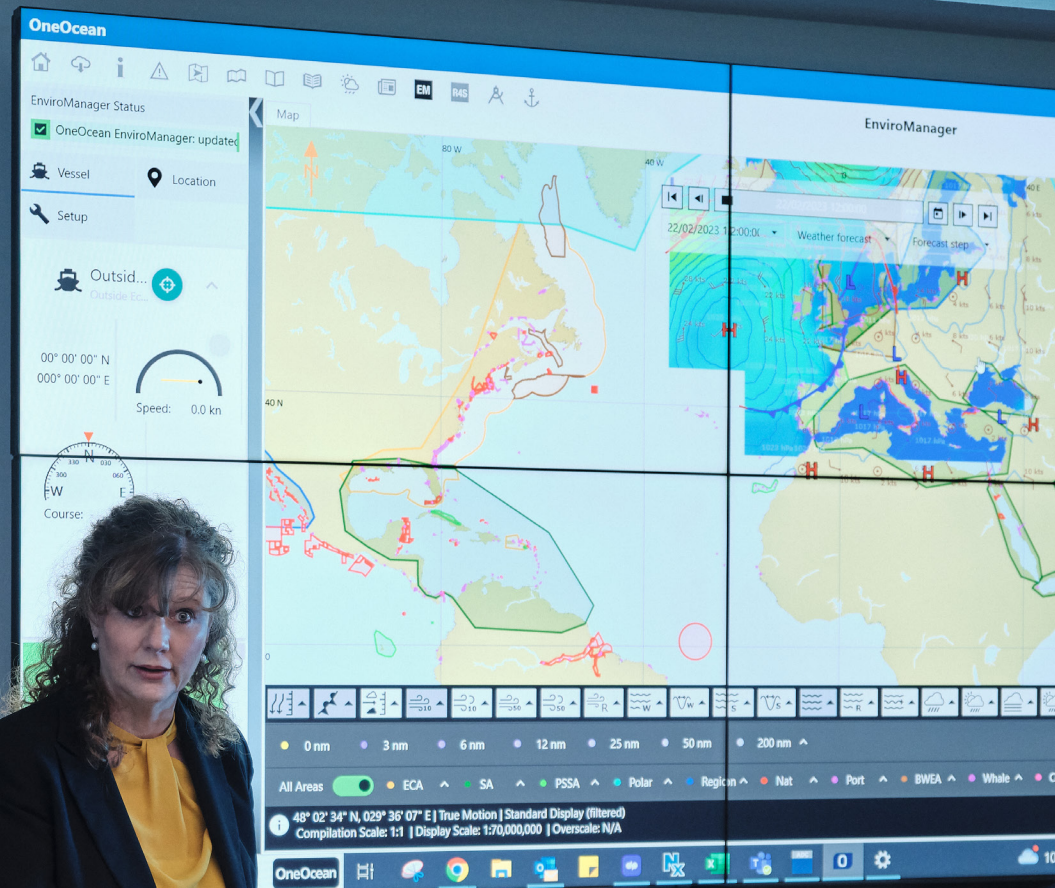


## Save costs, time and fuel

Reduce your vessel's environmental footprint by following optimal routes with **24/7 Route Advice**. Our Master Mariners can help you stay on course with round the clock support and timely updates to your vessels. Improve your decision-making and operational efficiency with greater accuracy and insights from D1 models.

- Avoid bad weather and meet charter party terms with an **optimised charter route**
- **Get back on course** if you deviate from your route
- Accurate vessel class-specific model with **D1 Modelling using data from over 8,000 vessels**





### Minimise risk and enhance your operational awareness

**Performance Monitoring** allows a timely response to operational and quality issues with alerts and notifications, and ensures you are compliant with all regulatory procedures as you enter new zones, minimising your risk of detention.

- Ensure compliance with regulatory requirements in zones such as **ECA and SECA**
- **Instant configurable alerts** for critical events and data quality issues



### Ensure voyage and vessel efficiency with data-driven insights through Managed Services

#### Before charter

On-Demand Pre-Fixture Analysis improves your chartering strategy and profitably by identifying the optimum vessel in a fleet for charter, while machine learning powered Vessel-Specific Modelling provides an accurate and precise forecast of vessel performance.

#### During charter

Emissions Verification data on route confirms your compliance with regulations and informs decarbonisation initiatives with a clearer view of your emissions output.

#### Post charter

For ongoing profitability and efficiency, Post-Voyage Analysis helps you make the decisions that optimise and save costs on future voyages. And, should there be a dispute after charter, our Professional Claims Management service helps you deal with the claims process quickly and efficiently, resulting in faster resolution times and reduced financial risk.



# Maintain fleet compliance and minimise financial exposure

The maritime sector is now subject to the EU Emissions Trading Scheme (ETS), mandating carbon pricing for shipping activities within EU waters.

OneOcean Emissions Management supports fleets in adhering to EU ETS by enhancing performance and minimising financial impacts through advanced analytics for precise emission estimates, real-time monitoring and compliance adjustments. It also integrates route simulation, vessel monitoring and post-voyage reporting to boost efficiency, maintain compliance and lower the cost of EU Allowances (EUAs).

## Key outcomes

### Holistic oversight

Comprehensive monitoring delivers a 360-degree view of all EU ETS activities, ranging from a vessel's emissions data to compliance status.

### Real-time decision-making

Our Vessel Operations team leverage real-time data to help you make proactive decisions about your vessel operations, minimising your exposure to ETS.

### Risk mitigation

Proactively identify and mitigate potential compliance risks, reducing the likelihood of penalties while ensuring robust adherence to EU ETS.

### Dynamic adaptability

Our Vessel Operations Centre scales with the growing complexity of the EU ETS requirements, ensuring we can support every vessel use case.



# Operate with confidence

## Gain a strategic advantage with OneOcean Emissions Management

OneOcean Emissions Management provides the insights and technical expertise you need to ensure EU ETS adherence.



### Accurate allowance estimate

We use advanced data analytics and machine learning ship modelling to establish your vessel's EU ETS requirements. By considering factors of historical emissions, we accurately anticipate and allocate the EU certifications needed for a particular route of passage.



### Real-time monitoring and adjustment

Our Managed Service Desk continuously monitors your vessel's emissions levels, so you can compare them with allocated allowances. This ensures you can make operational adjustments that keep your vessel compliant and cost-effective.



### Route and fuel optimisation

Predictive modelling forecasts your future emissions. This provides you with the foresight to optimise routes and adopt fuel-efficient technologies, helping you to minimise overall EUA requirements and lower costs.



# Expertise that elevates your operations

Discover what makes us different



## Vessel modelling

Create accurate models for precise performance forecasting and detailed insights, with D1 Modelling or Vessel-Specific Modelling.

**D1 Modelling** utilises performance data from 8,000 vessels, while **Vessel-Specific Modelling** applies machine learning to train a model to replicate the performance of a vessel.

## Quality and breadth of data

Improve your decision making and proactively enhance your vessel performance with access to a broad, quality data set and expert advice.

Based on knowledge gained from optimising and monitoring 400 ships daily, we'll advise you on how your vessel will behave, perform and deteriorate throughout its lifetime. Plus, we'll use data validation to ensure the accuracy of your data set and give you access to in-depth naval architecture and sea trial data for vessels actively trading.

## Trusted advisers

Follow optimised charter routes – saving you costs, time and fuel – and stay on course with guidance from our expert SSR team.

Through our Master Mariners combined one million days of experience, and our maritime and digital expertise across 22,000 vessels, we can provide practical advice on route optimisation and vessel performance.

**Request a demo**

Ready to explore what  
OneOcean Perform  
can do for you?

[enquiries@oneocean.com](mailto:enquiries@oneocean.com)

[oneocean.com/perform](https://oneocean.com/perform)

