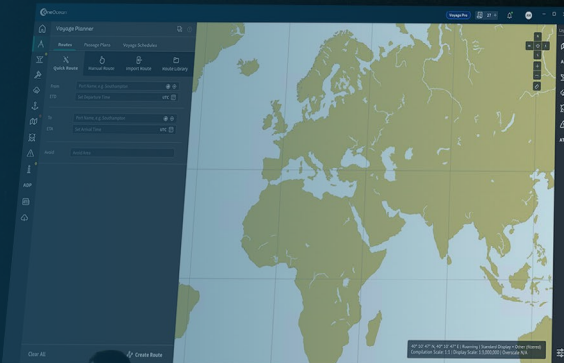


Seamless connections to unite your maritime journey

Transform digitally with confidence

 OneOcean^{LR}



Better decision-making. Onboard. Onshore. Online.

The Lloyd's Register OneOcean Platform (the OneOcean^{LR} Platform) is a comprehensive portfolio of tools providing industry-leading actionable intelligence to maritime professionals. It drives performance, profitability and progress, assists decision-making and reduces risk. It's built with simplicity and flexibility at its heart. This means different components can be added, removed, or customised to suit the unique needs of individual roles, easily and with no downtime.

The Platform tackles ship management, navigation, route planning, and performance all in one place. At the same time, it combines compliance, environmental and navigational data, allowing operators to sail anywhere with the confidence that regulations will be adhered to, and the environment protected.

The Platform is built on four key areas:

Comply

Manage

Perform

Integrate



Connecting the ocean economy for greater protection, performance and progress.



When navigating voyages, you need to be compliant with all regulations as you pass through different regions. This can be a labour-intensive and time-consuming process because rules are applied by many different authorities, agencies, nations, and regions, each with their own requirements.

But compliance is critical to avoid fines, time out of service and the environmental implications associated with faulty emissions, discharges, and other violations.

OneOcean Comply makes it easy to have continuous compliance, while protecting the ocean, at every stage of your voyage. It includes solutions for:

- Navigation
- Compliance
- Operations



OneOcean Navigation

OneOcean Navigation helps you plot and execute efficient, safe, clean, and compliant voyages from port to port. It covers route optimisation, weather, charts and publications, fuel performance, passage planning, port entry, piracy, navigational warnings, and more. Bringing all the insights you need to plan and navigate a successful voyage from one consolidated platform.

Modules



Charts & Publications

Gain the flexibility to enhance your outfit management, with a simple way to view and access charts, permits and publications. Pay as you sail supports compliance, letting you purchase charts and permits as you travel through an area.



Ports

Access data on thousands of port facilities around the world through a single platform. Ensure seamless port arrivals and departures, by giving crew the detail they need to prevent delays, deficiencies or detentions.



Piracy

Get real-time updates and historical data on incidents through the Platform's clear visual interface that's accessible from ship and shore. Helping to keep your vessel, crew and cargo safe on voyage.



Weather

Optimise route performance and avoid unsafe conditions with detailed forecasts for specific coordinates, ports and routes in real-time, up to nine-days in advance.



Route Optimisation

Identify the most time, fuel or cost-efficient route for your vessel's journey, utilising comprehensive datasets and AI algorithms to remove complexity.



Passage Planning

Automatically plot the most efficient route between destinations – including both port and anchorage points – by consolidating all the necessary data and information into the Platform.



NavArea Warnings

View navigational and safety-related guidance and updates on all 21 operational NavAreas. A visual interface shows you the precise boundaries where warnings are in effect with clickthrough access to more details.



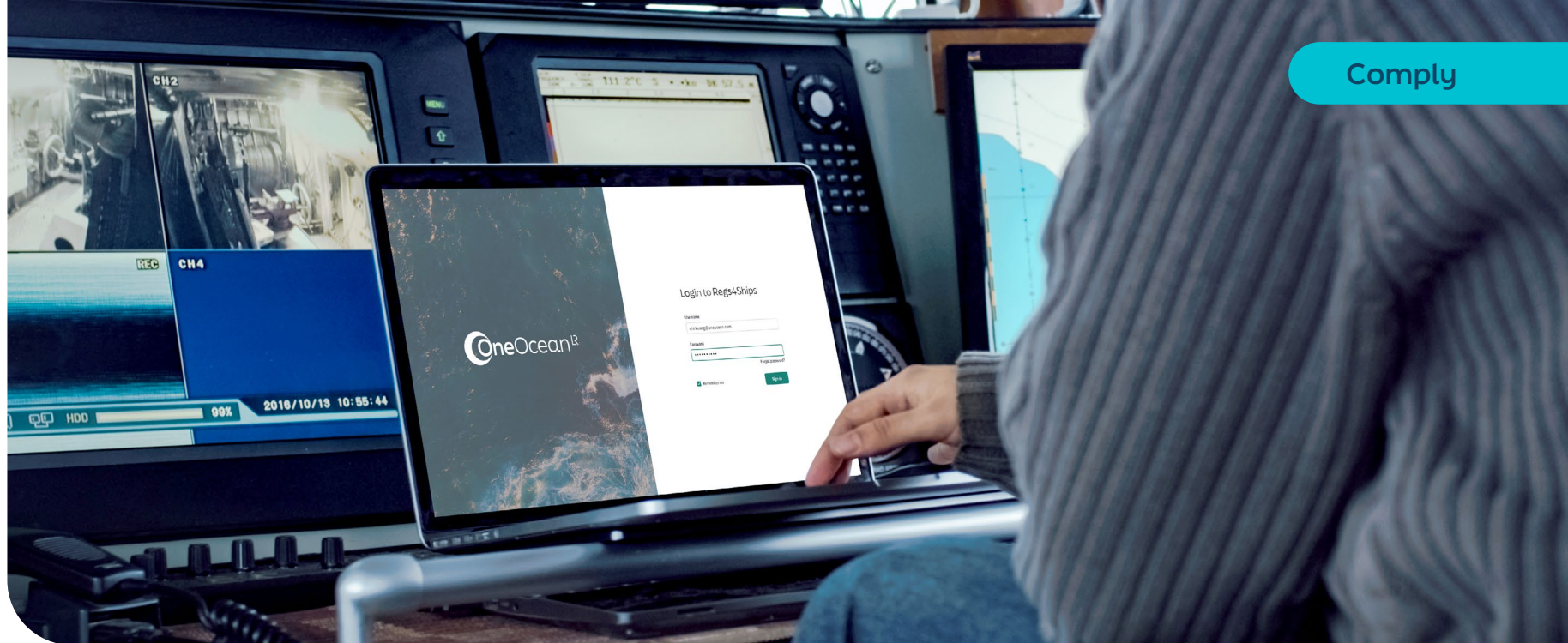
Situational Awareness

Connects shoreside teams directly with vessels, allowing them to access a real-time visualisation of each vessel's circumstances and provide support where needed. An additional portable ENC viewer is also available for optimum peace of mind.

OneOcean Compliance

OneOcean Compliance enables your ship and shoreside teams to control risk anywhere in the world, even when plans change and when no internet is available. It does this by providing uninterrupted access to trusted, up-to-date regulatory and environmental databases of live official nautical documents, including all international, environmental and flag legislation, as well as historical regulatory data.

With OneOcean Compliance, your vessel has the resources it needs to remain compliant with regulatory and environmental requirements and it can provide an accurate audit trail with consistent digital reporting.



Modules



Regulatory Compliance

Quickly and efficiently access the data you need to stay compliant. This module provides a comprehensive, searchable database of every official regulatory document from multiple sources, including the IMO, ILO and numerous flag states.



Environmental Compliance

Monitor regulations before and during voyage with data on over 500 environmental zones and 170 nations. This ensures clarity of all environmental regulations on route and that you have the discharge waste stream type for your vessel. Environmental standards can be set and deployed from one location across fleets.



Reporting

Create an accurate audit trail to maintain QHSE compliance and accountability. OneOcean^{LR}'s **Electronic Record Books** and **Accident & Incident Reporting** modules offer a consistent and digital way to record and maintain logbook entries.

OneOcean Operations

OneOcean Operations connects data from ship to shore, enabling you to visualise where regulations are in effect, and where ships are in relation to them. Toggle data overlays on and off to interrogate voyages for clarity, context, improved situational awareness, and more accurate ERB and incident reporting. The Operations solution standardises information for consistency, so you can easily set configurations for an entire fleet.

Modules



Vessel Tracking

Enable shoreside personnel to monitor fleets anywhere in the world, utilising AIS or GPS tracking.



Configuration

Allow shoreside teams to customise fleet and vessel settings and deploy them centrally. This includes passage plans, safety parameters, policy and equipment settings

You can enhance OneOcean Operations by using the following OneOcean Navigation modules:



Charts & Publications

Gain the flexibility to enhance your outfit management, with a simple way to view and access charts, permits and publications. Pay as you sail supports compliance, letting you purchase charts and permits as you travel through an area.



Situational Awareness

Connects shoreside teams directly with vessels, allowing them to access a real-time visualisation of each vessel's circumstances and provide support where needed. An additional portable ENC viewer is also available for optimum peace of mind.

Stay prepared with a digital approach to navigation, compliance and operations

[Learn more](#)



For your voyages to be safe, clean, efficient and profitable, everyone needs the right information to perform their jobs. However, different roles often need to use different platforms, which can add complexity and cost, disrupt communications and slow down operations.

OneOcean Manage is an easy-to-use system powered by a complete solution for Ship Management and Crew Management. It simplifies fleet, ship, voyage, crew, and document management by providing real-time information and instructions to the right people, aligning them around one central platform. Plus, it empowers shoreside teams with visibility of onboard activities and ship-shore information exchange – even when vessels don't have consistent internet access.



OneOcean Ship Management

OneOcean Ship Management is a total solution that covers technical management, operations, and is a Safety Management System (SMS).

It's available off-the-shelf and ready to go, or as a customised solution set up according to your specific requirements. And because it's cloud-native, it's accessible anywhere, on any device.

Modules



Safety Management System (SMS)

Connect teams with the information they need to ensure compliance and safety via an intuitive interface. This includes detailed instructions on emergency protocols, so all parties are immediately aware of what steps to take in a critical situation. SMS streamlines the inspections and audits for fast root-cause analysis.



Technical Management

This brings together, prioritises, and coordinates different stakeholders internally and externally to deliver an optimal schedule of activities that includes bunker management, maintenance planning, fleet performance and certificate administration. All through one platform for seamless operations.



Operations

Consolidate the administration tasks and operations needed to successfully charter vessels and keep them secure. This module offers a complete approach to running your fleet and its charters, including contract data, the administration of schedules and visualisation of fleet movements, inspections and ports on voyage.

SMS includes:



Document Management

Replace inefficient and decentralised methods of document exchange and maintenance with one streamlined workflow. The Document Management module offers a digital approach to document management with information synchronised in real time.



QHSE

This intelligent digital framework facilitates the exchange of compliance documentation, giving your shoreside teams the oversight needed to promote a culture of safety and compliance. These modules are available with pre-set features or can be tailored to the unique process needs of your fleet.



Certificate Management

Store digital versions of all vessel and crew certifications in a single centralised location, giving crew and shore-based teams 24/7 access to this library of information.



OneOcean Crew Management

OneOcean Crew Management enables managers to coordinate all crew-related procedures from one place, including resource planning, document validation, work/rest hours, and payroll. It connects departments and helps everyone onboard maintain high QHSE standards.

For crew members, a self-service crew portal allows them to manage their data, documents, and paperwork autonomously – reducing the burden on managers. While digital archiving of circulars enables joining crew members to get themselves up to date quickly.

Modules



Crew Planning & Payroll

Streamline the processing of employee information, encourage communication and enable better planning. The Crew Planning & Payroll module integrates across all departments for seamless management.



Crew Logistics

Book flights, arrange onboard accommodation and access important crew information, this module helps reduce the manual effort. And, with all information and resources connected in one place, you can respond quickly to sudden crew changes.



Crew Work Rest

Through the Platform easily plan, manage and report on crew's rest hours compliance. Or utilise the capabilities of ISF Watchkeeper.*

Simplify fleet and crew management with a digital approach

Explore today



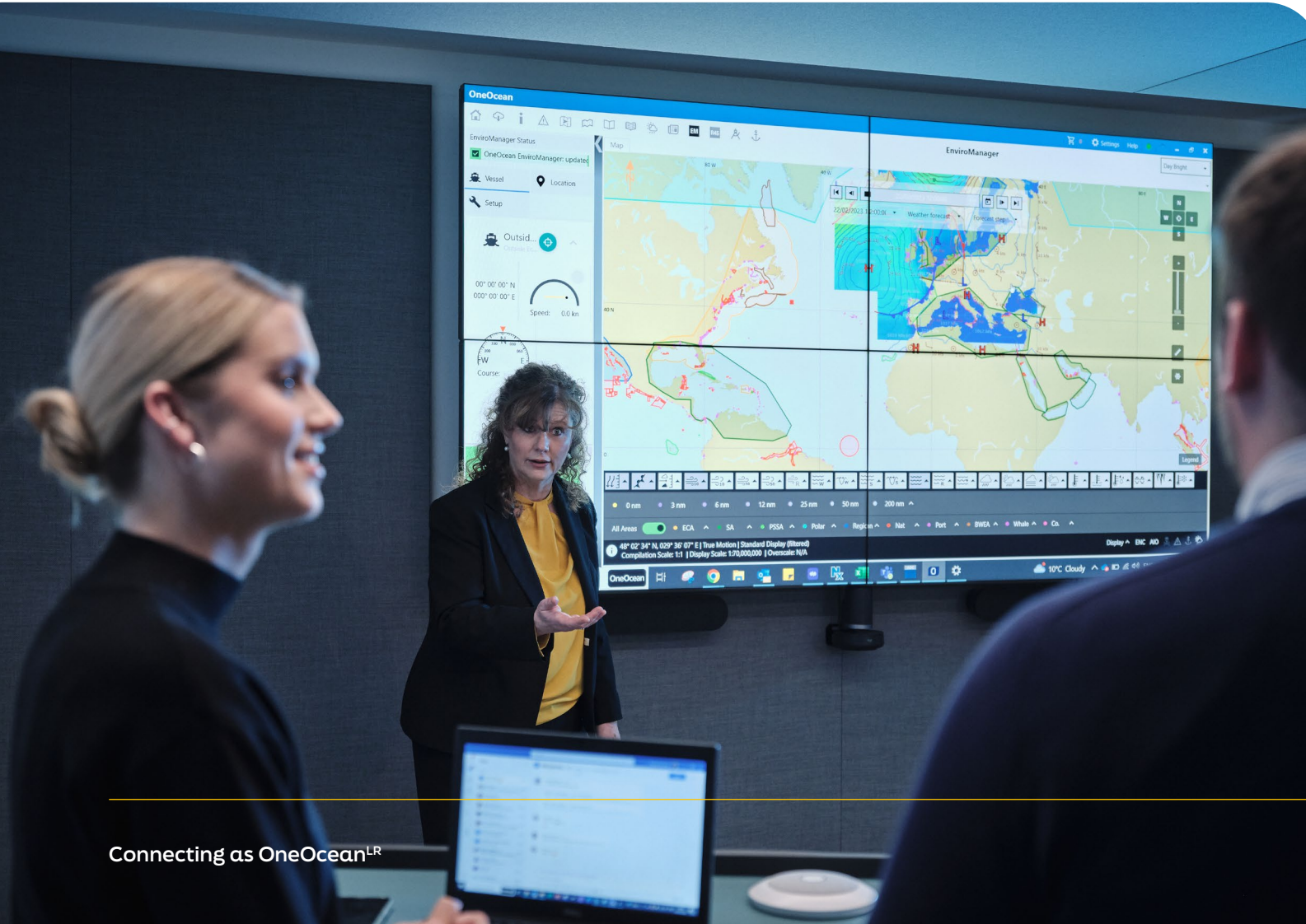
Whether you're a charterer or shipowner, understanding the performance of a vessel is crucial to meeting both decarbonisation and commercial objectives. But gathering the accurate information you need to stay competitive and compliant can be complex.

OneOcean Perform is an integrated and robust solution that pinpoints performance challenges within the maritime industry. It harnesses the power of both the OneOcean^{LR} Platform and our Shoreside Routing (SSR) team to grant unparalleled visibility into the performance of your vessel. Allowing you to proactively manage risk, optimise vessel performance and make the informed decisions that grow profitability.



OneOcean Vessel Performance

Through one trusted source, OneOcean Vessel Performance gives you insights into every aspect of your vessel's performance – before, during and post charter. This includes tools for benchmarking and data modelling, as well as advisory support from our experts.



Modules



Vessel Performance Tracking

Get complete control of your fleet and track every vessel's performance, at all times. This module lets you access real-time tracking and enhanced situational awareness. You can improve vessel safety, security and operational efficiency with weather visualisation and an ENC-like layer through the Platform.



Charter Party Management

Simplify contract handling, improve negotiations and avoid deviation from the charter party terms, with one place to input and track changes to your agreement.



24/7 Route Advice

Save costs, time and fuel, and reduce your vessel's environmental footprint by ensuring you always follow the optimal route. Our Master Mariners can help you stay on course with 24/7 support and timely updates to vessels. Day One Modelling also enables you to improve your decision-making and operational efficiency with greater accuracy and insights from class-specific models.

OneOcean Vessel Performance



Performance Monitoring

With support for compliance monitoring, our SSR team will make sure you comply with all regulatory procedures as you enter new zones, minimising your risk of detention. Minimise risk and enhance operational awareness by ensuring a timely response to operational and quality issues with instant configurable alerts.



Managed Services

Before charter

On-Demand Pre-Fixture Analysis improves your chartering strategy and profitably by identifying the optimum vessel in a fleet for charter, while machine learning powered Vessel-Specific Modelling provides an accurate forecast of vessel performance.

During charter

Emissions Verification data on route confirms your compliance with regulations and informs decarbonisation initiatives with a clearer view of your emissions output.

Post charter

For ongoing profitability and efficiency, Post-Voyage Analysis helps you make decisions that optimise and save costs on future voyages. And, should there be a dispute after charter, our Professional Claims Management service helps you deal with the claims process quickly and efficiently, resulting in faster resolution times and reduced financial risk.

Optimise your vessel performance
with data insight and expert advice

Explore OneOcean Perform

OneOcean Emissions Management

OneOcean Emissions Management provides the insights and technical expertise needed for shipowners, operators and charterers to meet EU ETS requirements. Using advanced analytics, we precisely estimate annual voyage emissions to provide accurate allowance allocations, and then monitor real-time emissions against these allowances so adjustments can be made to ensure adherence. Combining route simulation, vessel monitoring and post-voyage reporting, we give you the data-driven intelligence to improve efficiency, support compliance and reduce the financial burden of EUAs on your business.

Modules



Accurate allowance estimate

We use advanced data analytics and machine learning ship modelling to establish your vessel's EU ETS requirements. By considering factors of historical emissions, we accurately anticipate and allocate the EU certifications needed for a particular route of passage.



Real-time monitoring and adjustment

Our Managed Service Desk continuously monitors your vessel's emissions levels, so you can compare them with allocated allowances. This ensures you can make operational adjustments that keep your vessel compliant and cost-effective.



Route and fuel optimisation

Predictive modelling forecasts your future emissions. This provides you with the foresight to optimise routes and adopt fuel-efficient technologies, helping you to minimise overall EUA requirements and lower costs.

Navigate the emissions management journey with Lloyd's Register

Explore our solutions



Whether at sea or ashore, access to the right data makes voyages safer, more sustainable and efficient, continuously compliant, predictable, and profitable. Equipped with the right data, you can connect relevant information to the right people or systems at the right time, helping to mitigate risks such as environmental disasters, fines, or damage to ships.



OneOcean Data Consultancy

Informed decision-making for each vessel in your fleet requires contextualised information from all available datapoints. However, the sheer breadth and volume of data can make it difficult to decide what data is needed to inform a decision.

With Data Consultancy services, you have the guidance and expertise of OneOcean^{LR} to identify the datasets most relevant to your ships and regions of operation, so you can uncover insights that are fit for purpose. By working together and understanding what you want to achieve, we can advise and customise solutions to your specific challenges – ensuring you get meaningful outcomes from your data.

OneOcean APIs

Designed for interoperability, our APIs are easily embedded into existing systems. By overlaying these datasets on screen, they can be interrogated for richer context and more informed decision-making.

OneOcean Integrate provides high-quality, relevant, real-time, and previously out-of-reach data via three flexible APIs.

Modules



Navigation API

Get access to the data you need to successfully plan and manage voyages. The Navigation API gives you access to all your passage data, including historical planned passages, and changes on planned routes.



Environmental API

Gain real-time access to worldwide environmental regulations, helping you remain compliant and operationalise your own environmental standards.



Ports API

Get the latest worldwide port information, including maps, certification requirements and regulations.

Get the data you need to
guide voyage decision-making

[Discover more](#)

Digitally transform with confidence

Speak to our experts about
connecting your digital journey
with the OneOcean^{LR} Platform.

enquiries@oneocean.com
oneocean.com



Lloyd's Register and variants of it are trading names of Lloyd's Register Group Limited, its subsidiaries and affiliates.
Copyright © OneOcean Group Limited. 2024. A member of the Lloyd's Register group.

