



COMPLIANCE

# Environmental Compliance

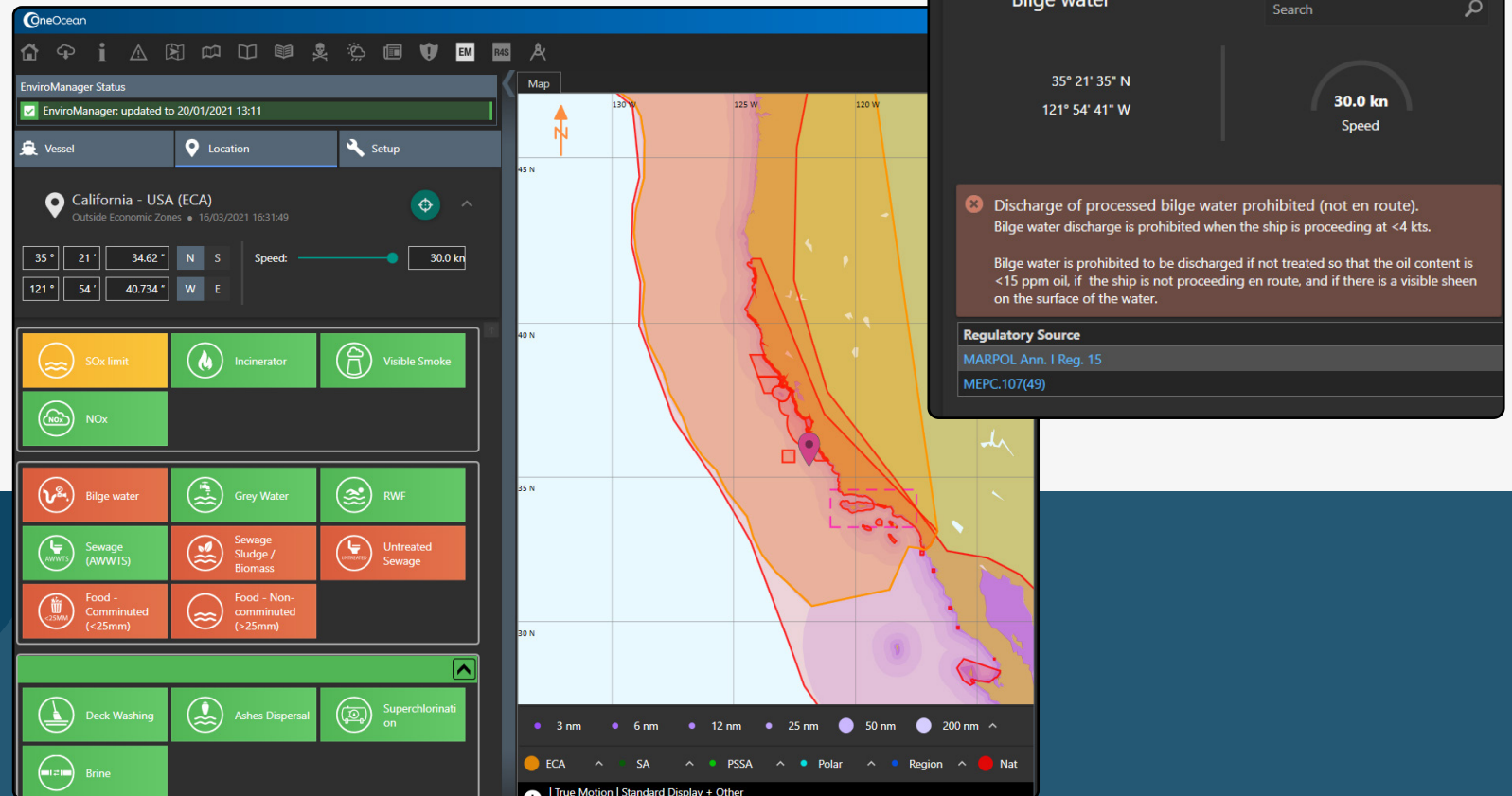
A complete solution to keep maritime companies compliant



# Plan ahead and exceed regulations

OneOcean Compliance enables ship and shoreside teams to control risk anywhere in the world, including when plans change. It does this by providing uninterrupted access to a trusted, up-to-date regulatory database of live and archived official nautical documents, including all international, environmental, and flag legislation. Even when no internet is available.

Consisting of data on over 500 environmental zones and 170 nations, the OneOcean Compliance's Environmental Compliance module, also known as **EnviroManager**, helps monitor regulations before and during voyages. It also supports the setting and deployment of environmental standards across fleets from one central location.





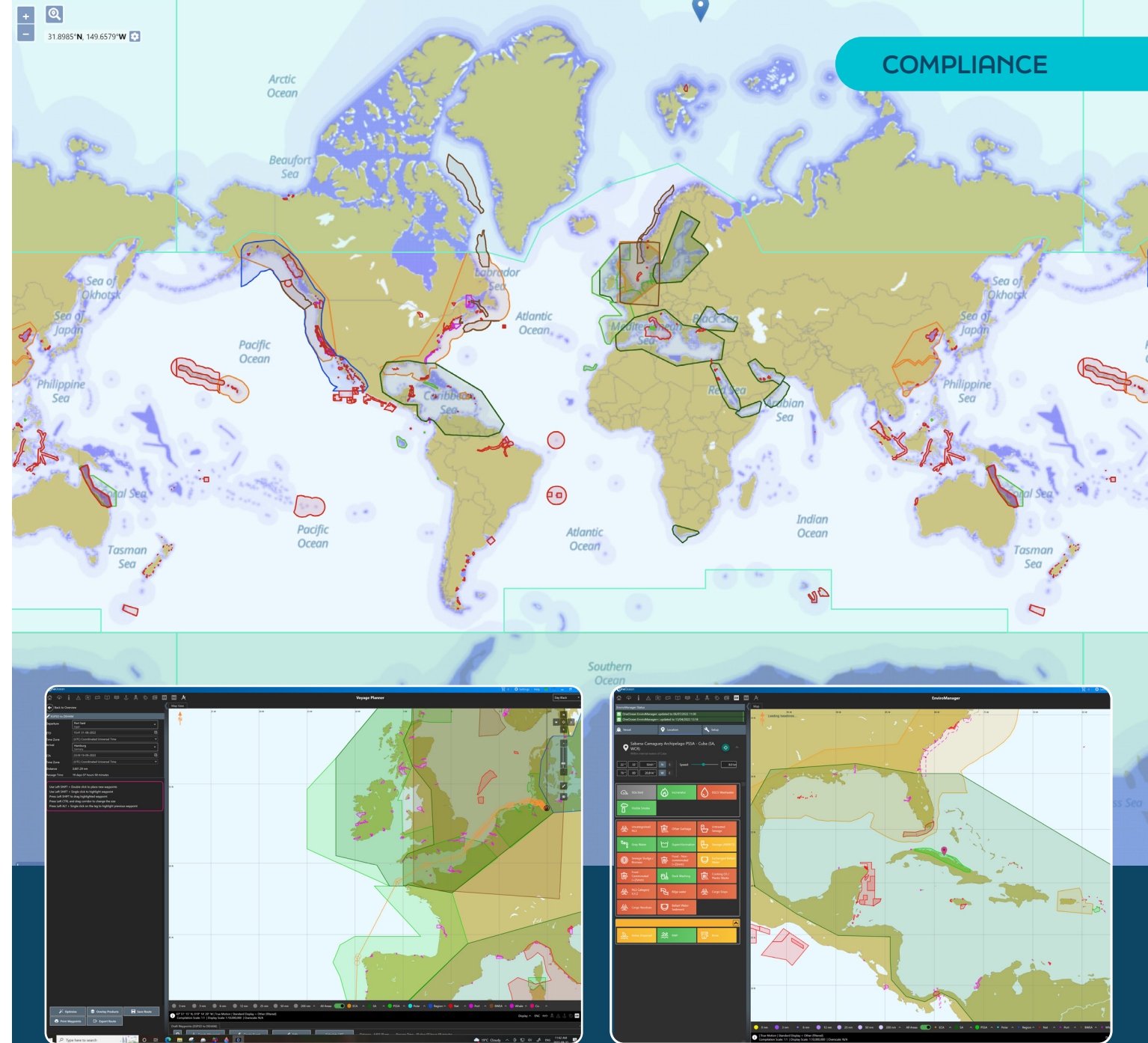
# Providing clarity throughout the voyage

Balancing compliance with marine environmental regulations across a fleet is a complex undertaking. As the scope of the task grows with new rules and regulations, staying up to date is becoming an increasingly difficult task for mariners. As is avoiding the risk of non-compliance and potentially costly violations.

**Environmental Compliance** is a simple, user-friendly solution that allows personnel on shore and ship to stay fully informed of all environmental regulations.

A digital map visualises where environmental regulations are in effect, helping you create passage plans that are safe and compliant. With data from over 500 environmental zones and 170 nations, it provides end-to-end clarity for all environmental requirements along a route. Customisation ensures you have the relevant discharge waste streams type to your vessel, giving you all the information needed to plan a compliant voyage with peace of mind.

Knowing all environmental regulatory policies helps set internal policies that exceed the minimum standards. Through **Environmental Compliance**, shoreside teams can deploy company policies and standards to vessels through position-based guidance. This removes the risk of any miscommunication and ensures a consistent approach across fleet protocols and training.

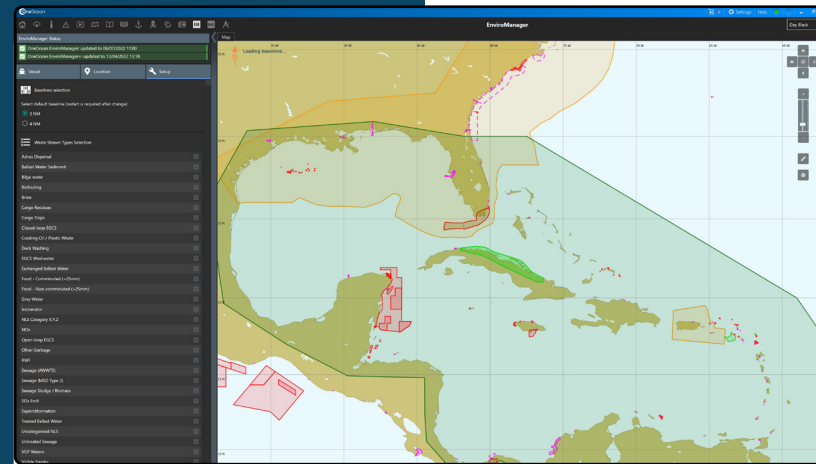


# Aiding maritime business and keeping seas safe

Risks are further avoided through the traffic-light notification system. Green alerts show the vessel has full permissions, amber shows that it's allowed but with restrictions. Red indicates the vessel is not allowed.

The Platform provides a dynamic timeline that shows environmental events taking place throughout a voyage, providing an accurate 12 hour outlook showing to the minute when waste streams come online or change status.

You can access environmental regulations in force at specific locations or along a route. You also get a clear and concise summary of regulations at coordinates or an estimated time series of events from route information. You select the depth of data you want to access.



## Highlights

**Visual cues** easily identify where regulations are in force

**Environmental regulation zones** shown alongside navigational waypoints, weather and risk alerts for better planning

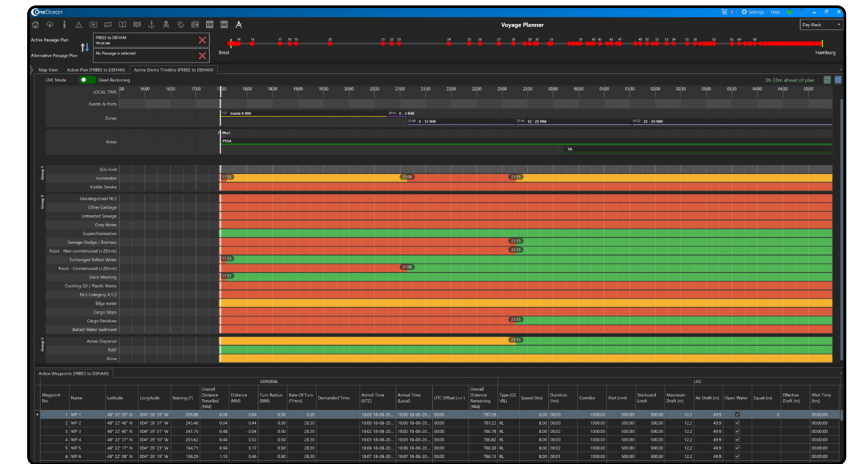
**Verified and monitored** by LR OneOcean's dedicated team

**Shoreside view** supports situational awareness

**Dynamic timeline view** shows environmental events taking place throughout a voyage

**Company-wide standards set**, deployed and ranked on vessel displays from shore

**Traffic-light notification system** to clearly display risk levels



## Benefits

**Strengthens the environmental profile** of an organisation

**Reduces risk** of fines and reputational damage

**Provides peace of mind** and clarity for all stakeholders

**Adds to ISO 14001** environmental management processes

**Supports planning** of operational events to ensure legality

**Builds in higher standards** of compliance across fleets

**Shoreside changes to policies updated instantly** through a web-based application

# Environmental Compliance



Stay informed and strengthen  
your environmental profile  
with a transparent view of  
all environmental regulations.

[enquiries@oneocean.com](mailto:enquiries@oneocean.com)

[oneocean.com/environmentalcompliance](https://oneocean.com/environmentalcompliance)

