



INTEGRATE

Navigation API

---

Environmental API

---

Ports API

---

Data Consultancy

Power systems across the  
maritime industry to forge a  
cleaner, safer path into the future



# The insights you need for more efficient voyages

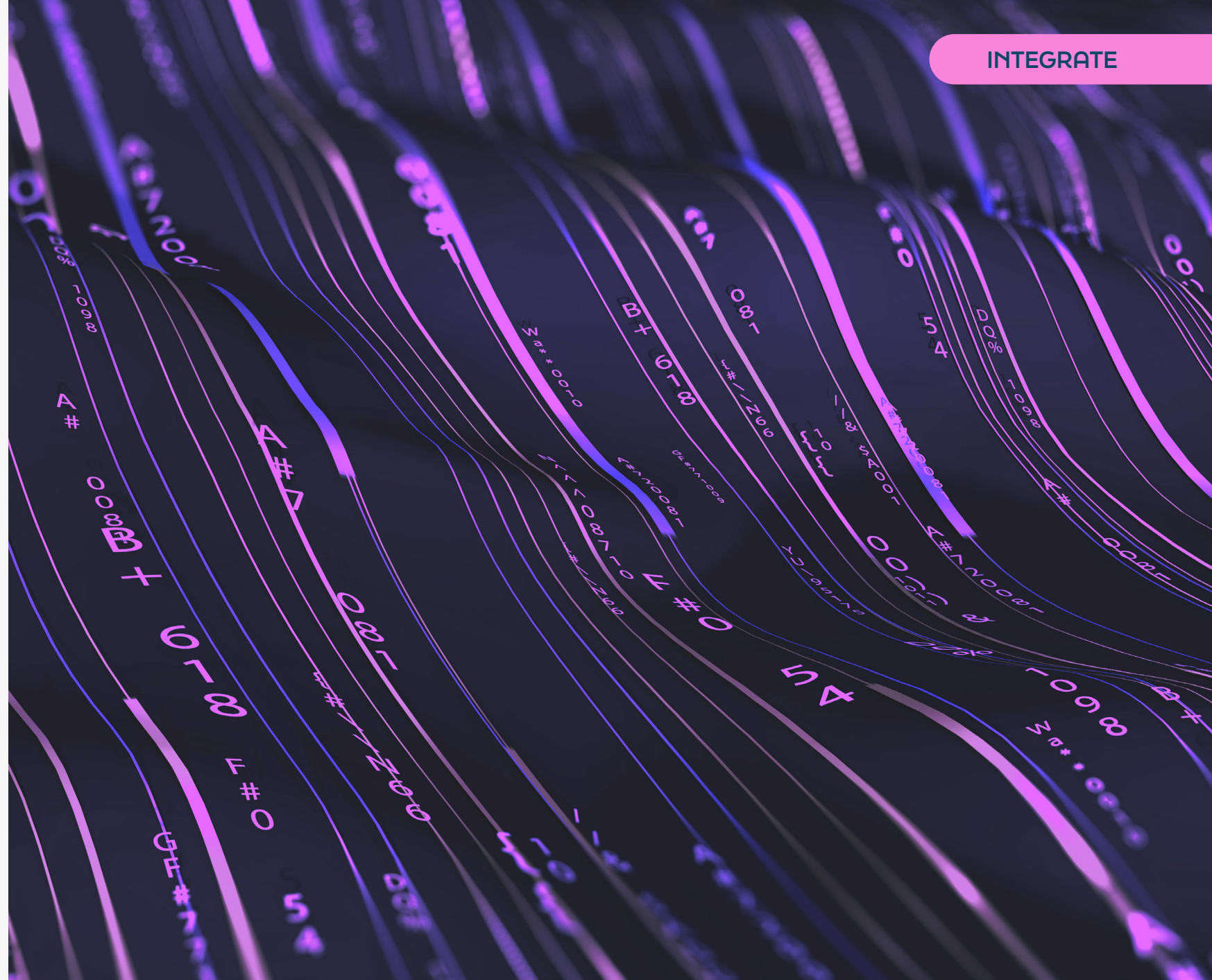
Whether at sea or ashore, the right data helps make voyages safer, more sustainable, continuously compliant, predictable, and profitable. It helps mitigate the risk of environmental disasters, fines, or damage to ships.

Data integrations can connect relevant information to the right people or systems at the right time.

OneOcean Integrate provides high-quality, relevant, real-time, and previously out-of-reach data via three flexible **API solutions**. Plus, our **Data Consultancy** helps identify the relevant datasets and solutions to address your specific challenges.

Stay up to date with changing regulations, maps, certifications, and other requirements needed to navigate from port to port.

With the largest coverage of ships in the industry, our data is comprehensive, consistent, high-quality and trusted. OneOcean<sup>LR</sup> data powers systems across the maritime industry.



# Data shaped to your needs with OneOcean Integrate

API solutions provide access to planned routes for all vessels in your fleet, a summary of environmental regulations in force at specific locations, and the latest port information and requirements, providing clarity and ease for each voyage.

## Navigation API

Access all passage data, including historical planned passages, and monitor changes on planned routes, for successful management of voyages.

## Environmental API

Gain real-time access to worldwide environmental regulations in one place – helping you remain compliant and operationalise your own environmental standards.

## Ports API

Integrates into existing business systems for instant access to the latest worldwide port information, including maps, certification requirements and regulations.



# Navigation API

## Better connecting your data

Having timely access to the right information is vital for efficient and compliant passage planning. Our **Navigation API** easily integrates with your external fleet management systems to provide the insights needed to plan and manage successful voyages.

It offers an easy way to access previously out-of-reach data, helping to support route planning with features that allow you to monitor and analyse passage plans. This includes reviewing historical planned passages or comparing planned versus executed routes.

Access is tiered to different functions and levels of detail, allowing teams to seamlessly import planned routes into shoreside dashboards, overlay metrics along a plan, and more.

### Benefits

**Ease of access** to all planned routes for your fleet

**Monitor changes** on planned routes and routes in progress

**Gain access** to historical planned routes

**Analyse** planned versus executed routes

**Access data** to run vessel performance analysis

**Implement custom alerts** for specific route conditions

### Highlights

**Rich and up-to-date data sets**, maintained by dedicated experts, online and live

**Quick integration** with existing systems, fully compliant with OpenAPI 3.0 for ease

**Range of plans and incremental functionality** to support each business case

**No additional hardware or software needed** beyond the Platform onboard

**Independent** from the ECDIS vendor used onboard

# Environmental API

## A simple integration for environmental compliance

In a move to reduce maritime's environmental impact, industry regulations and minimum requirements are constantly evolving – and so are your own fleet standards.

The **Environmental API** easily integrates into your existing business systems, giving real-time access to worldwide environmental regulations through one simple interface.

Using a real-time query model, our API retrieves environmental regulations in force at specific locations or along a route of passage. It lets you access a clear and concise summary of regulations at coordinates or produce an estimated time-series of events from route information.

You select the depth of data you want to access by harnessing the power of our Environmental dataset in a fully customisable way. Allowing your teams to plan compliant operational events with peace of mind.

### Benefits

**Simplifies environmental regulations** for ease of compliance

**Provides comprehensive worldwide regulation data** at sea

**Identifies and understands** different waste streams

**Plans** for efficient, compliant waste management along a route

**Gives visual displays** to simplify complex, overlapping jurisdictions

**Select** feature, location or vessel-specific data

### Highlights

**Rich and up-to-date data sets**, maintained by dedicated experts

**Quick integration** with existing systems, fully compliant with OpenAPI 3.0 for ease

**Range of incremental functionality** to support each business case

**Customised** frequency and depth of data

## Ports API

# Providing the data to improve operational planning

Locating all the information needed for arrival and docking is a time-consuming but essential process. Knowing the port-specific regulations, what documentation is required and where key facilities are located, all helps smooth the voyage and remove the risk of costly fines or penalties.

Integrating the **Ports API** into existing business systems provides instant access to the latest worldwide harbour information, including maps, certification requirements and regulations. Drawing on our established connections with ports, OneOcean<sup>LR</sup>'s team of experts maintain this database of information and ensure it's always up to date.

### Benefits

**Consolidates port information** from disparate sources

**Provides clarity** on arrival procedures

**Supports smoother port entry** and departure

**Delivers data** to identify safe harbours in an emergency

### Highlights

**Port diagrams** to understand facilities layout before arrival

**Data integration** into existing systems

**Identifies specific ports** or criteria types

**Rich and up-to-date datasets**, maintained by dedicated experts

## Data Consultancy

# Find the right APIs to support your voyage decision-making

Access to the right data provides the critical insights needed to make voyages not only safe, sustainable and compliant, but also profitable. Informed decision-making for each vessel in your fleet requires contextualised information from all available datapoints. However, the sheer breadth and volume of data can make it difficult to identify the right data to enable the right decisions to be made.

With our Data Consultancy services, you have the guidance and expertise of OneOcean<sup>LR</sup> to identify the datasets most relevant to your fleet and regions of operation. Making your insights fit for purpose and your voyages safe, sustainable and compliant.

By working together and understanding what you want to achieve, we can advise and customise solutions to your specific needs – ensuring you get meaningful outcomes from your data.

With the largest coverage of vessels in the industry, our data is comprehensive, consistent, high-quality and trusted. OneOcean<sup>LR</sup> data powers systems across the maritime industry.

### Benefits

**Extract meaning from data** with guidance from our experts

**Access out-of-reach data** for more confident decision-making

**Overlaying datasets** from our APIs on screen provides richer context and greater data interrogation

### Highlights

**We advise on and customise solutions** to overcome your specific challenges

**Interoperable APIs** can be embedded into existing systems to create a single source of information

**High-quality OneOcean<sup>LR</sup> data** is trusted by the maritime industry

## Navigation API

Connect all your passage data and plan routes with ease.

## Environmental API

Stay informed, compliant and mitigate your environmental impact.

## Ports API

Discover how to make your port entries and departures seamless.

## Data Consultancy

Get the data you need for better voyage decision-making.

[enquiries@oneocean.com](mailto:enquiries@oneocean.com)

[oneocean.com/integrate](https://oneocean.com/integrate)

