



NAVIGATION

Ports

Navigate every port
from one place



Seamless docking without hassle

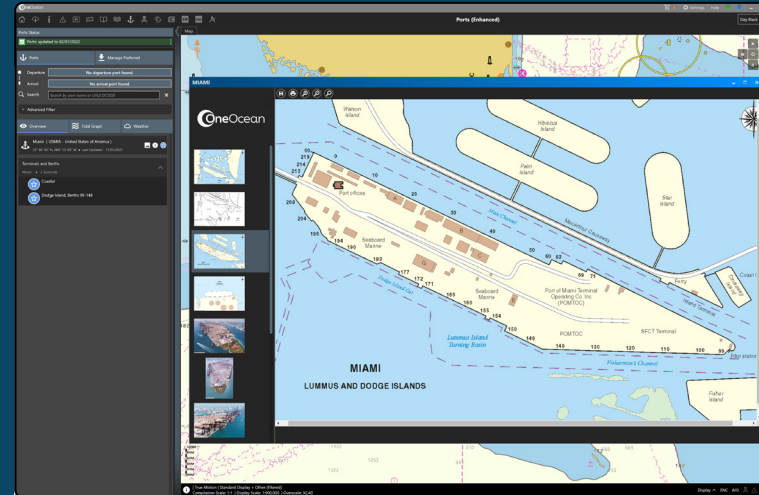
Essential to voyage compliance and navigation is the need to be properly prepared for the requirements of each port a vessel will be docking at. Time, money and stress are avoided when the correct authorisation and certification are in order.

The Ports module of OneOcean Navigation makes sure everything is in order. Through a single platform, access data on hundreds of port facilities around the world. Ensuring seamless port arrivals and departures, by giving crew the detail they need to prevent delays, deficiencies or detentions.

When travelling to and through new destinations, preparing all the necessary information can be a time-consuming task. And getting it wrong has its consequences. Arriving at port without the correct authorisation or certification can cause delays and potentially have financial consequences.

Ports lets mariners access data on thousands of port facilities around the world to plan seamless port visits and give crews the detail they need to prevent delays, deficiencies or detentions.

It provides a complete summary of the vital information a vessel needs to plan successful port stops, minimise unnecessary manoeuvring, and ensure the seamless transfer of cargo.



The Platform map interface shows the locations of all ports, helping you identify facilities on and near voyage routes. Having all the port data in one place ensures a seamless port visit and mitigates the risks.

Port data provided, includes:

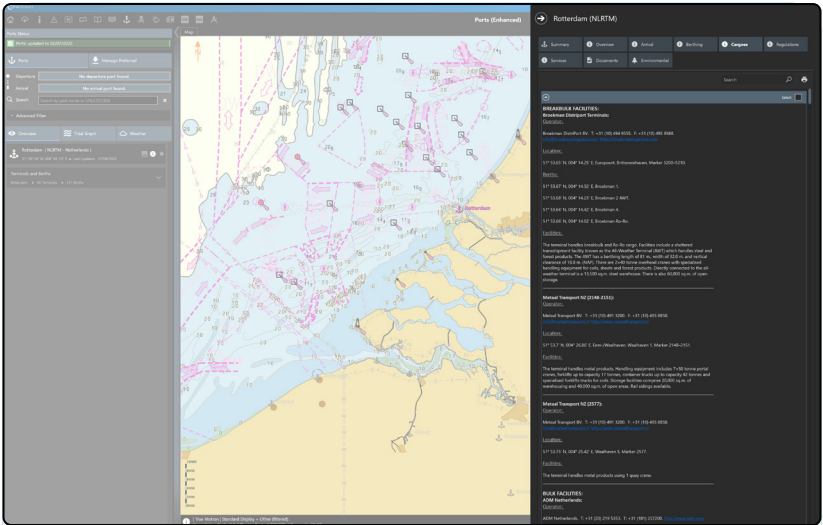
- Types and size of vessels accommodated
- The number of terminals and berths
- Berth coordinates
- Arrival and departure procedures
- VHF radio channels
- Contact information
- Tidal graphs
- Weather forecasts
- Cargo accepted, by port, terminal, and berth
- Terminal and berth-specific information
- Port diagrams
- Regulations and restrictions
- Services and equipment available
- Mandatory documents
- Actual Conditioned Experience (ACE) reports

Get it right for the routine and for emergencies

If your vessels regularly navigate the same routes, you can set preferred ports and terminals via the Platform. This ensures you get regular up-to-date information on frequently visited terminals, including cargo accepted and equipment available. **Ports** data is owned and maintained by the OneOcean^{LR} team, so it's always kept up to date.

Access and download all port documents to be presented to Port State Control upon arrival and ensure that relevant certificates and logbooks are ready for inspection.

This information is available as an online digital subscription, CD resource or printed format. The **Guide to Port Entry** provides accurate information on nearly 12,500 ports. It contains details on pre-arrival, port limits and documentation, plus pilot areas and environmental information.

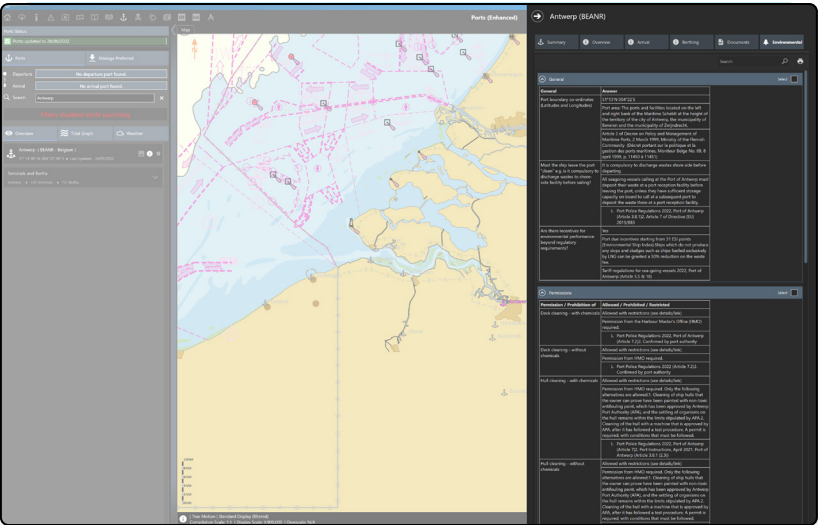


Highlights

Extensive database with up-to-date information on thousands of ports worldwide, all in one place

Contact information includes easily accessible details for port managers, service providers and agents

Downloadable port documents with everything needed for Port State Control upon arrival can be accessed on the Platform



Benefits

Speeds up the arrival procedure, allowing ships to dock without delay or financial penalties

Supports contingency planning, allowing vessels to find a safe harbour in emergencies

Determines the safest way to enter port, minimising unnecessary manoeuvring

Ports

All your port data
in one place.

enquiries@oneocean.com

oneocean.com/ports

