



NAVIGATION

Route Optimisation

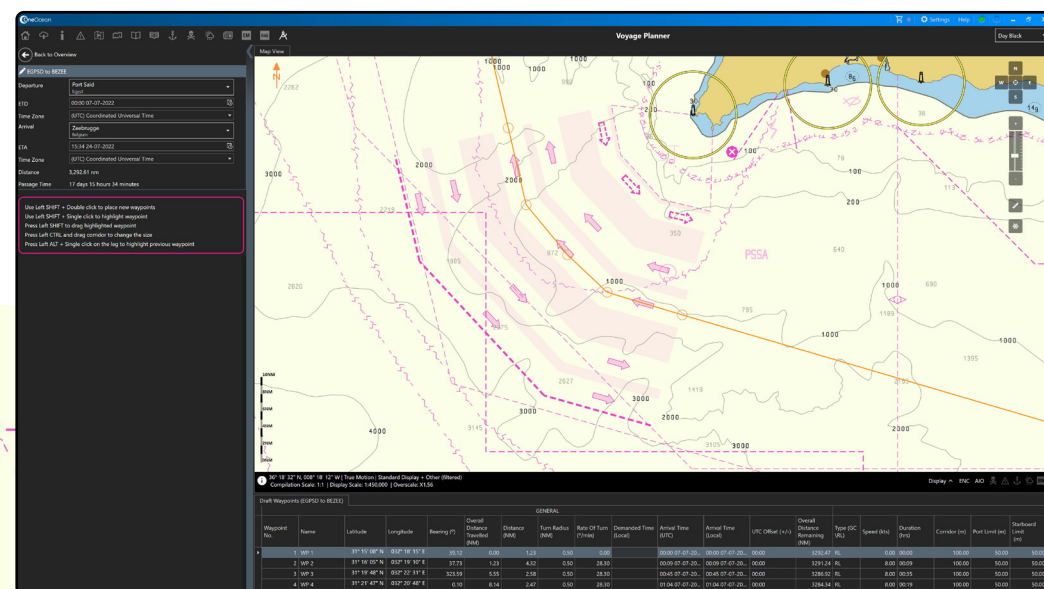
The intelligent approach
to planning



Improve route efficiency

While safety, efficiency and compliance are vital for every voyage, businesses need to consider margins and profits just like everybody else. The Route Optimisation module is part of the OneOcean Navigation solution.

Utilising comprehensive datasets and AI algorithms, it removes the complexity from voyage optimisation by identifying the most time, fuel or cost-efficient route for your vessel's journey through a single platform. Combined with the other navigational and safety modules, **Route Optimisation** means vessels and fleets can experience safe, efficient, compliant and profitable journeys.



Making journeys even more efficient

Voyage planning is a complex process that requires the consideration of multiple factors. The Route Optimisation module accelerates this process, helping to find the most time and cost-efficient route for your vessel's journey through one simple platform.

By drawing on key voyage details, **Route Optimisation** consolidates maritime data to choose the course. Ship leaders can see how a proposed route will be affected by all relevant factors, including navigational hazards, weather conditions, environmental areas, regional regulations and more.

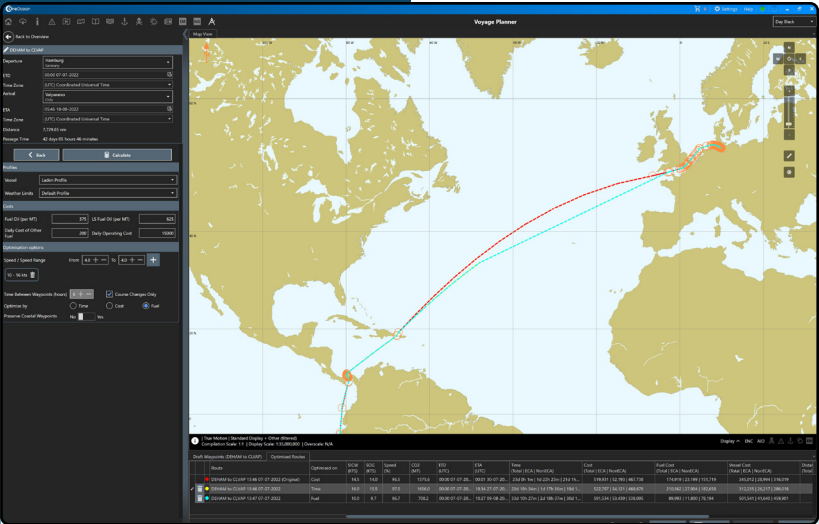
Voyage details are entered into **Route Optimisation**, including the destination, time and port of departure, the vessel's parameters, manoeuvrability constraints, and any other relevant details.

An intelligent approach to planning

To further increase accuracy during planning, **Route Optimisation** allows additional parameters such as fuel type, size, and how laden it is, to be added. Route options can then be compared for efficiency and modified as needed.

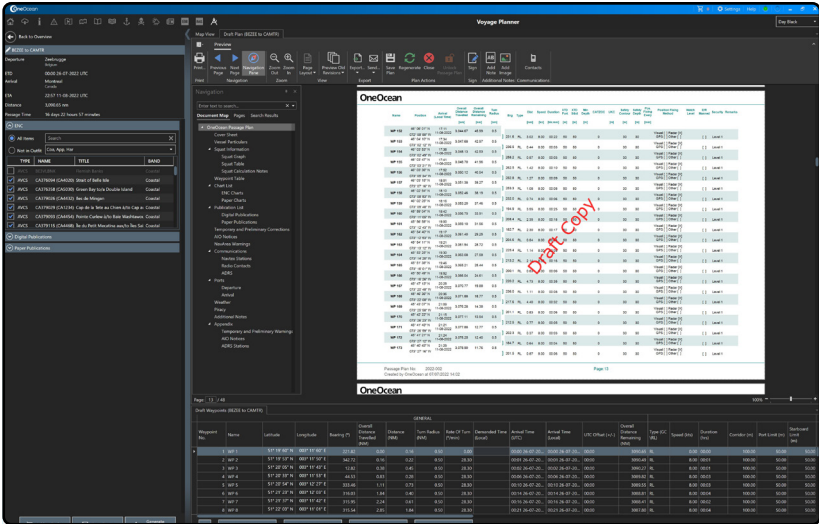
From these route options, each element of a comprehensive passage plan can be generated, visualised, reviewed and approved directly within the Platform.

With each section of the passage plan able to be edited and regenerated at any time, users can ensure their route always reflects the latest plan as circumstances inevitably change.



Benefits

- Simplified** voyage planning
- Time and cost-efficient** routing
- Real-time** document editing and regeneration
- Easier cost-of-voyage planning** for operators



Highlights

- Access and assess all relevant information** on a proposed voyage
- Ascertain risks** and evaluate critical areas
- Compare and evaluate routes** based on up-to-date factors and your inputted vessel parameters
- Plan voyages with full visibility** on all relevant factors, including navigation, weather, regulations and more

Route Optimisation

Plan journeys that
make business sense.

enquiries@oneocean.com

oneocean.com/routeoptimisation

