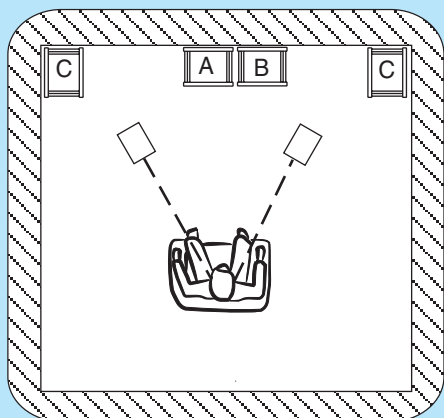


### Subwoofer placement



**Note:**

1) Positions A and B are recommended.

2) Position C causes a significant bass boost and may cause asymmetrical spatial imaging if only one subwoofer is used.

**Suggested input sensitivity settings for the 7050A**

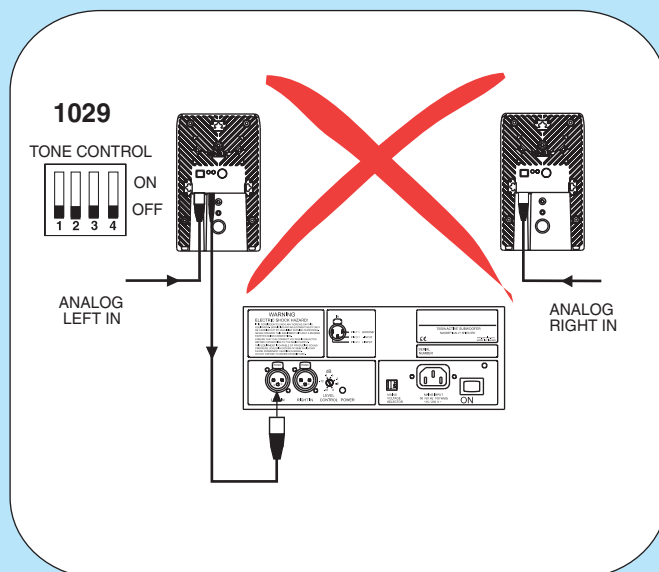
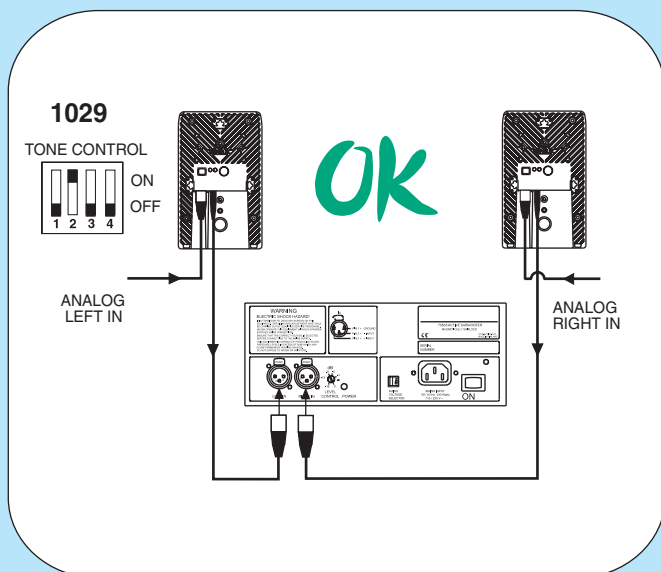
Position A and B:  
-2 to -8 dB



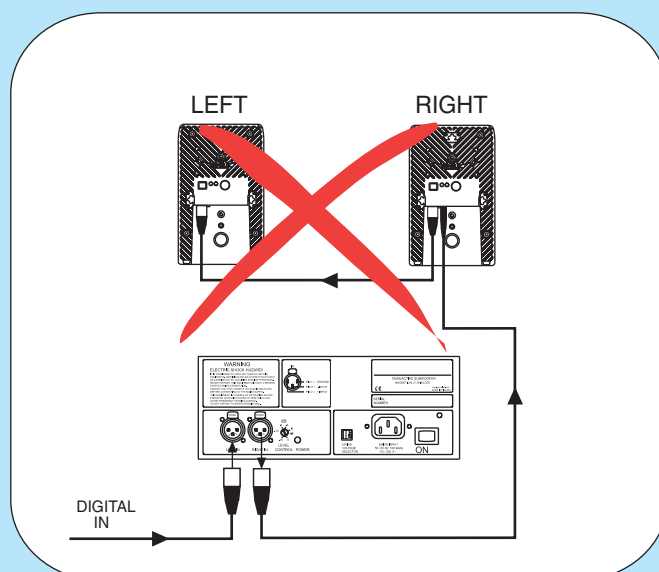
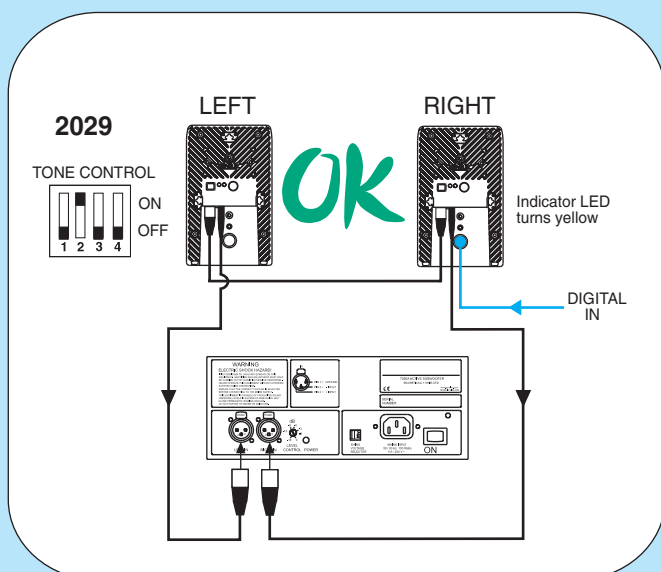
Position C:  
-6 to -12 dB



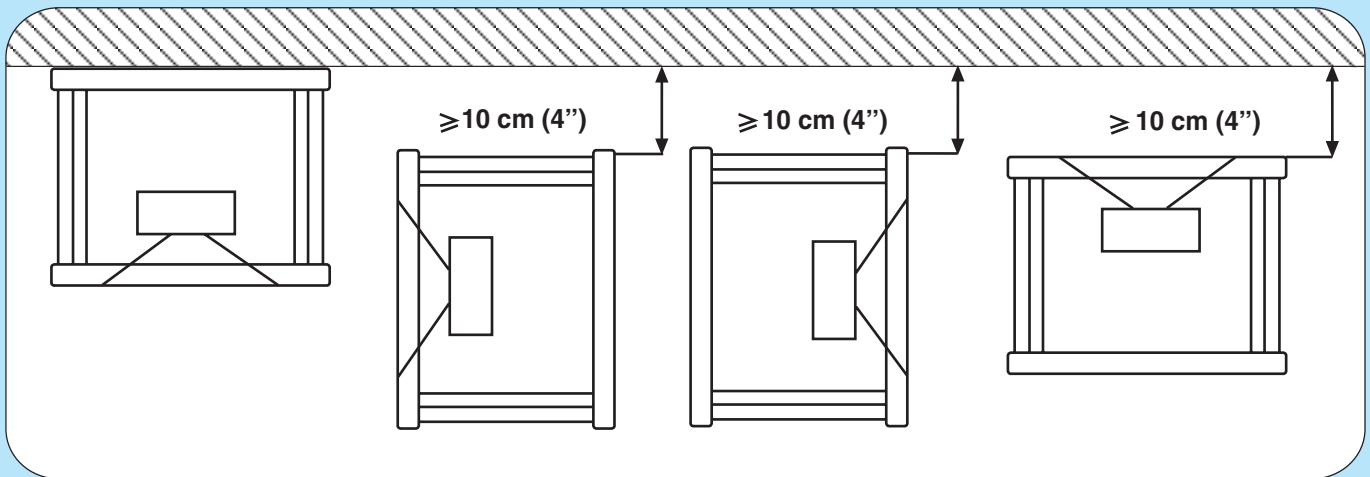
### Connecting 7050A with 1029A



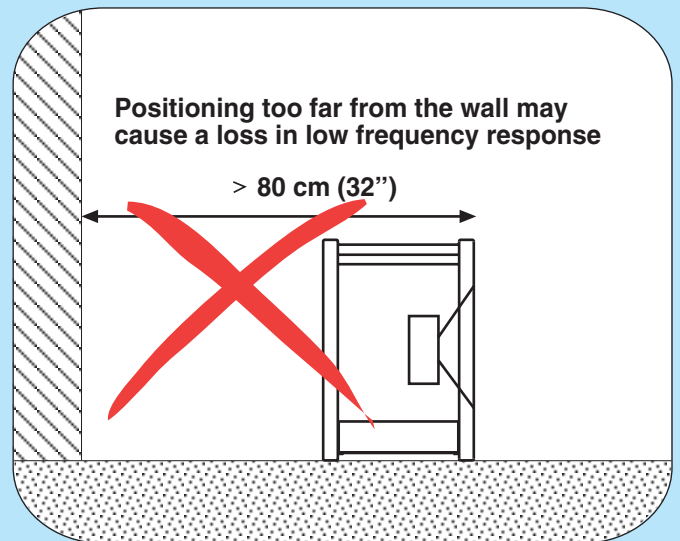
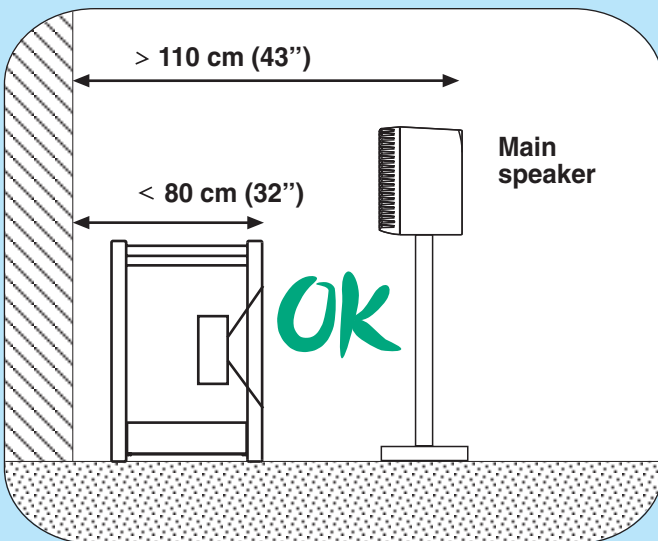
### Connecting 7050A with 2029



### Aligning the subwoofer



### Distance from front wall



### System combination

