

GENELEC®

CASE STUDY

The Synth Sense

MELBOURNE'S
SYNTHTEMPLE MERGES
VINTAGE SYNTHESIS WITH
CUTTING-EDGE IMMERSIVE
SOUND FROM GENELEC





WITH GENELEC MONITORS, SYNTHTEMPLE ENSURES
EVERY SYNTH, SAMPLER AND DRUM MACHINE IS HEARD
WITH ABSOLUTE CLARITY AND PRECISION



Situated in Melbourne's inner-city suburb of Kew, [SynthTemple](#) is a groundbreaking project that has captured the imagination of synth lovers and sound aficionados worldwide. As a fully functioning recording facility and museum, the studio is home to one of the most extensive collections of synthesizers, samplers and drum machines ever assembled. The facility

is the vision of Tony Osmond, a dedicated synth collector whose dream was to create a space where people could come to play, record, and explore these rare and legendary instruments in a world-class sonic environment.

Osmond's collection spans decades of electronic music history, including the legendary EMS model used on Pink Floyd's *Dark Side of the*

” FROM THE START, I WANTED SYNTHTEMPLE TO COME TO LIFE WITH A GENELEC SPEAKER SYSTEM.

Moon. His ambition was to reconnect artists with the tactile experience of hardware synthesis and move beyond the confines of software-based production. “Most recording studios have disappeared,” he says. “But as my private collection kept growing, my wife and I realised we wanted to create a facility where musicians would be inspired to play and produce music – and Genelec was the perfect fit.”

With a meticulously developed plan, Osmond approached Genelec’s Australian distributor Studio Connections over four years ago. “You could tell this was a very personal project, and his drive for perfection was evident,” recalls Steve Spurrier, Genelec Product Specialist at Studio Connections. “Tony’s planning was already extremely well developed when he came to us.”

The idea of immersive audio soon became central to the concept. “In early 2022, Tony and

synth technician Steve Jones visited an Atmos mastering studio that we’d built,” Spurrier explains. “It only took a few moments for them to realise that SynthTemple needed to embrace immersive audio. The system needed to support solo artists, group jams, and immersive playback without compromising on fidelity. Genelec’s Smart Active Monitors and GLM software allowed us to tailor the sound perfectly for each use case.”

At the heart of SynthTemple lies the 200m² Synth Hall, an expansive space featuring nine dedicated synth workstations, each connected to an individual laptop or “pod.” Artists can control any of the keyboards from their workstation or from the main recording studio, where an immersive Genelec monitoring system ensures pristine sound reproduction.

The Synth Hall houses a powerful 9.1.6 Genelec system composed of nine [S360](#) high-SPL



” GENELEC DELIVERS INCREDIBLE CLARITY AND A BEAUTIFULLY EXTENDED FREQUENCY RESPONSE.

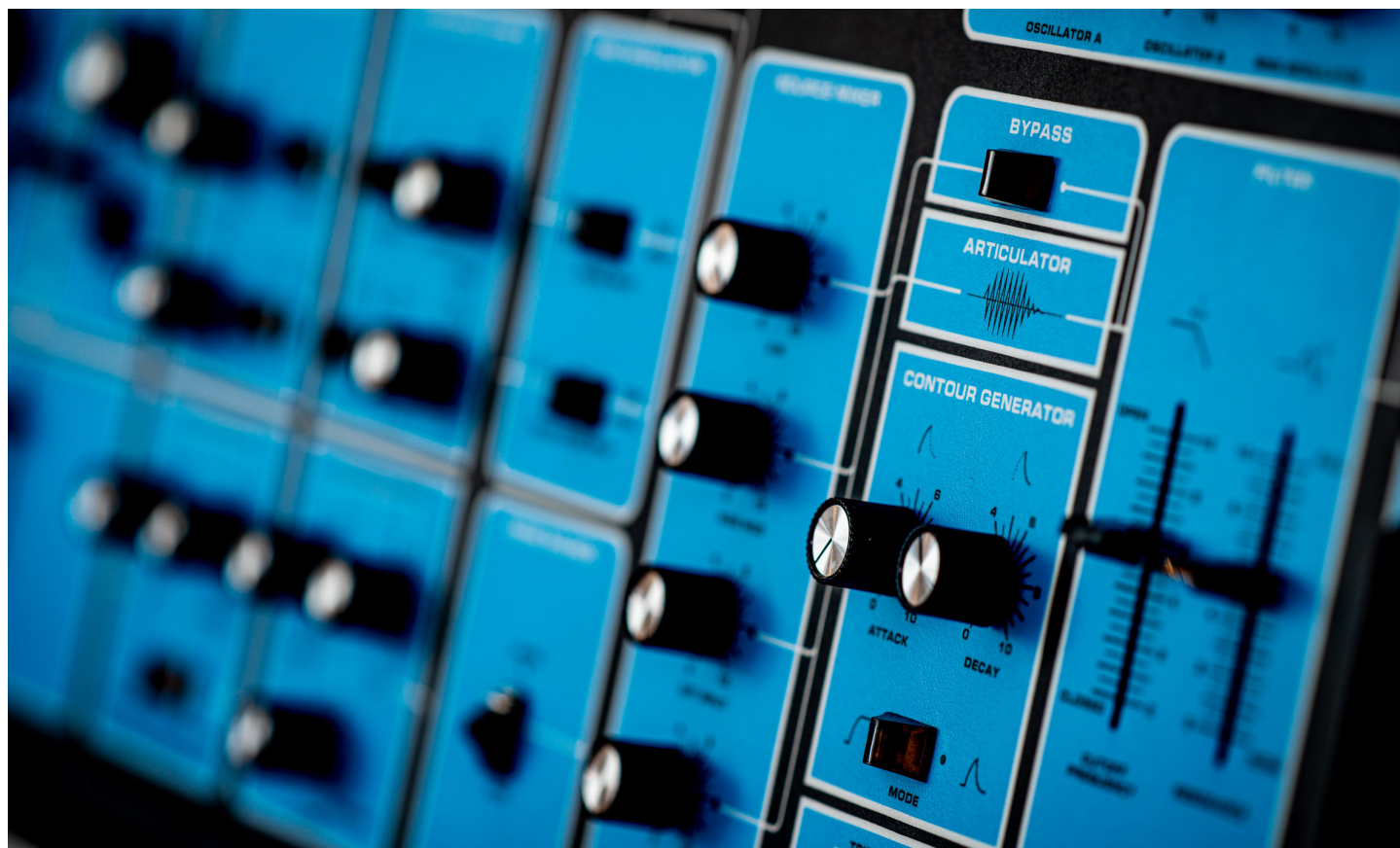
monitors for surrounds and six [8350](#) monitors for overheads, supported by a combination of one [7382](#) and two [7380](#) subwoofers handling LFE and bass management duties. The system's adaptability is further enhanced by three [9301](#) AES multichannel interfaces, providing flexible routing options, including dividing the Atmos array into multiple zones for individual pod use, each of which features [8330](#) nearfield monitors. [A 9320](#) Reference Controller provides centralised monitoring control.

In the adjacent control room, a fully networked production and mixing space features a Genelec 7.1.4 Atmos setup built around three-way coaxial monitors from 'The Ones' series – three [8361](#) monitors in the LCR positions, two [W371](#) adaptive woofer systems, four [8351](#) surrounds, four [8341](#) overheads and a pair of [7370](#) subwoofers for precise low frequency reproduction. Both rooms

are integrated via a Metric Halo interface allowing up to 128 audio channels to flow seamlessly between them.

“The thing that really surprised me was how the combination of S360s, 8350s, and 8330s delivers not only incredible clarity, but also deceptively powerful SPLs and a beautifully extended frequency response – especially when paired with the large 7382 or dual 7380 subwoofers,” notes Osmond.

Spurrier fine-tuned the entire space using Genelec's [GLM calibration software](#). “Steve's expertise was indispensable,” says Osmond. “To provide maximum versatility in the Synth Hall, Steve also configured the three 9301 multichannel interfaces, which allow the large Atmos system to fold down into multiple stereo arrays for local monitoring at each workstation.”



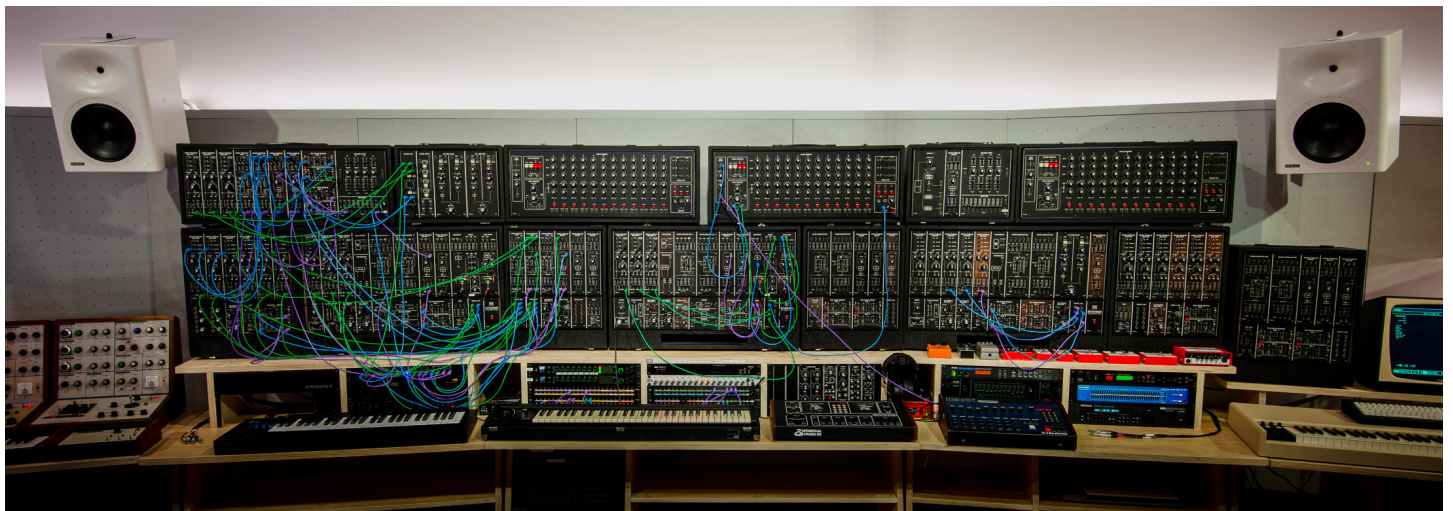
The infrastructure behind SynthTemple is just as impressive as its sonic capabilities. “The infrastructure was deceptively complex to install,” Spurrier notes. “We had to plan not only for current needs, but for long-term futureproofing.” An army of contractors handled the cabling installation, with customised steel floor boxes, terminations, and extra routing lines for future expansion.

For artists, producers, and synth enthusiasts, SynthTemple offers a uniquely immersive way to engage with electronic music history. The facility’s integrated infrastructure allows users to access and control the system from their laptops via a CAT5 network, with a total of 128 analogue input and output channels available. Metric Halo’s MH Link protocol manages not only the audio streaming and system control data but also distributes the master clock signal across all MH boxes, ensuring

seamless synchronisation throughout the studio.

Far from being a commercial enterprise, SynthTemple is the culmination of years of passion and dedication. Rather than profit, the motivation behind the project was to give something meaningful back to the Australian music community. With so many rare and historic synthesizers disappearing into private collections or falling into disrepair, the goal was to create a space where they could continue to inspire and be used by musicians in a truly world-class environment.

“It’s rare to work on a project with this much heart behind it,” Spurrier adds. “With Tony’s vision and Genelec’s technology, we’ve created something truly special – a space where history, creativity, and sonic excellence converge.”



THE KIT

Studio 1/Synth Hall

(9.1.6 Playback System, plus individual pods)

- 9 x S360A
- 6 x 8350A
- 12 x 8330A
- 2 x 7380A
- 1 x 7382A
- 3 x 9301B
- 1 x 9320A
- GLM Calibration Kit

Studio Control Room

(7.1.4 Atmos Mixing System)

- 3 x 8361A
- 4 x 8351B
- 4 x 8341A
- 2 x W371A
- 2 x 7370A
- GLM Calibration Kit

GENELEC OY OLIVIE 5 | 74100 | IISALMI, FINLAND | TEL. +358 17 83881 | GENELEC@GENELEC.COM | WWW.GENELEC.COM