

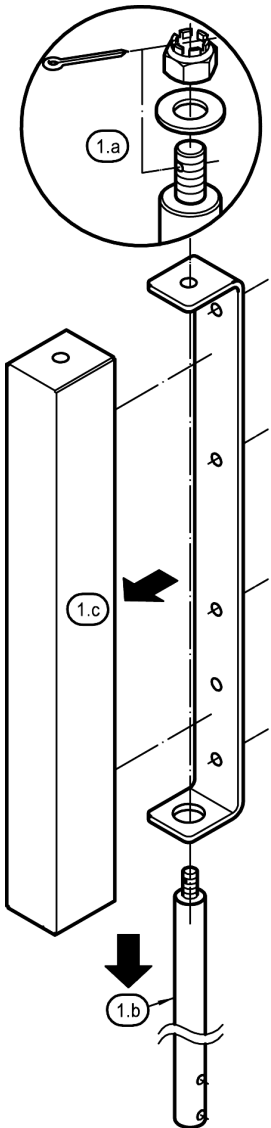
WALL MOUNT 1038-437B for GENELEC 1038CF/1238CF

adjustable in direction and angle

instruction manual

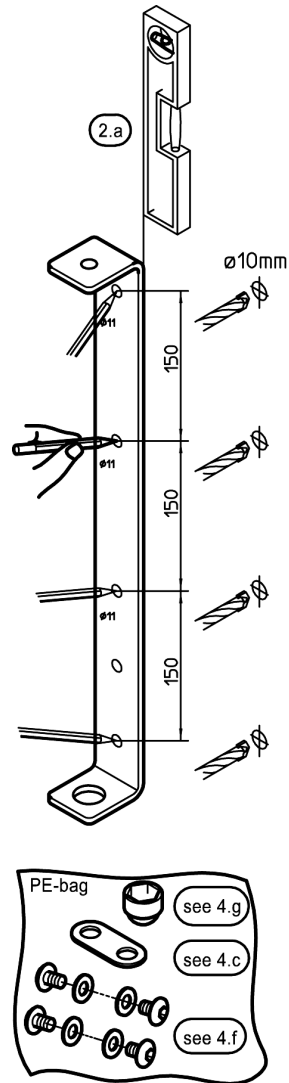
1. mounting preparation

- 1.a Loosen split pin, washer, nut, bolt
- 1.b Pull out the threaded rod
- 1.c Detach the frame



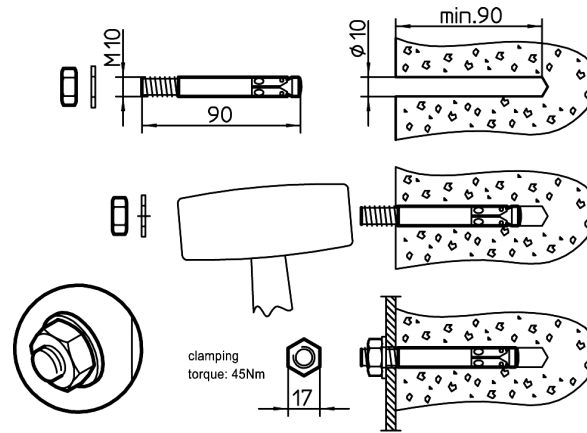
2. wall bracket fastening

- 2.a Adjust wall plate vertically
- 2.b Anchor holes drilling (4x) diameter 10 mm

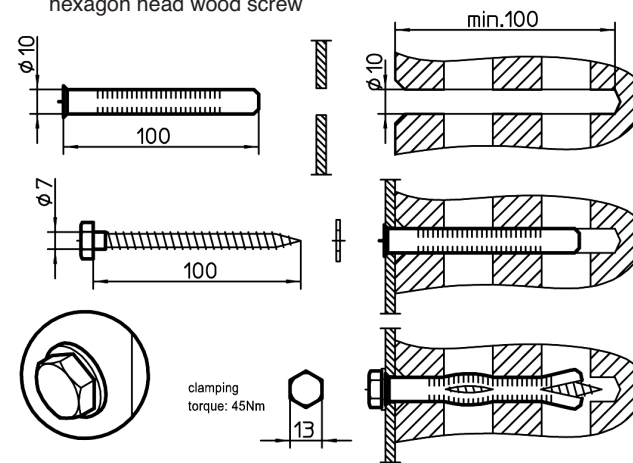


3. wall mount options

- 3.a concrete wall - e.g.: steel-anchor-bolt M 6 x 65 mm
- drill and blow out hole, place anchor, wall bracket and washer, tighten hexnut



- 3.b perforated bricks - e.g.: universal frame fixing set 8 x 80 mm
- drill, countersink and blow out hole, place anchor and bracket, fix hexagon head wood screw



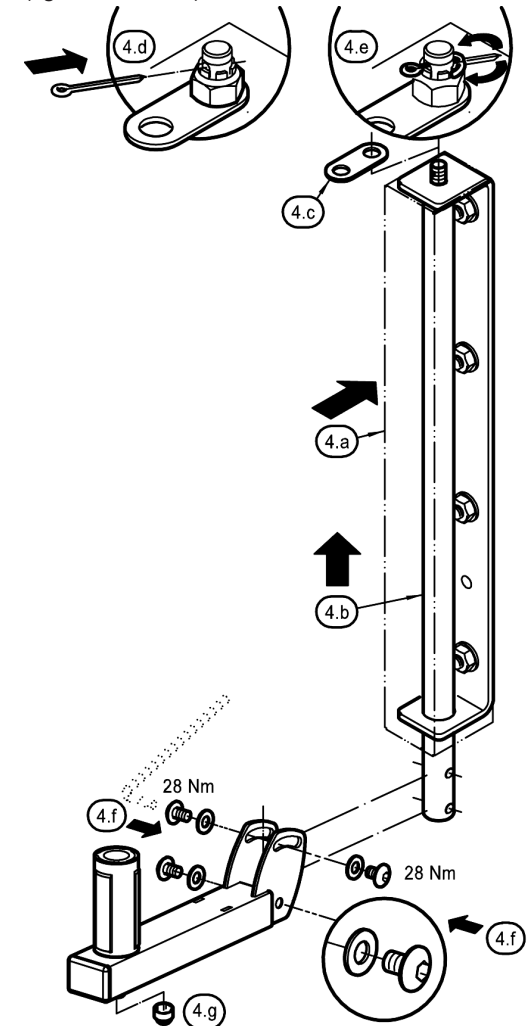
3.c injection-molded-anchor

without sieve bushing for concrete wall - with sieve bushing for perforated bricks / optional with threaded bolt M6 or threaded bushing M6

NOTE: fixing without pressure, enables repeated mounting, capable for diverse wall materials (please notice instructions of anchor manufacturers).

4. installation after wall bracket fastening

- 4.a Attach the frame
- 4.b Move in the threaded rod
- 4.c Place the joint bar above the thread and ...
- 4.d ...screw the castle nut to the threaded rod
- 4.e Secure the bolt assembly by mounting the split pin
- 4.f Bolt together (4x) vertical rod and speaker arm (tighten w/28Nm)



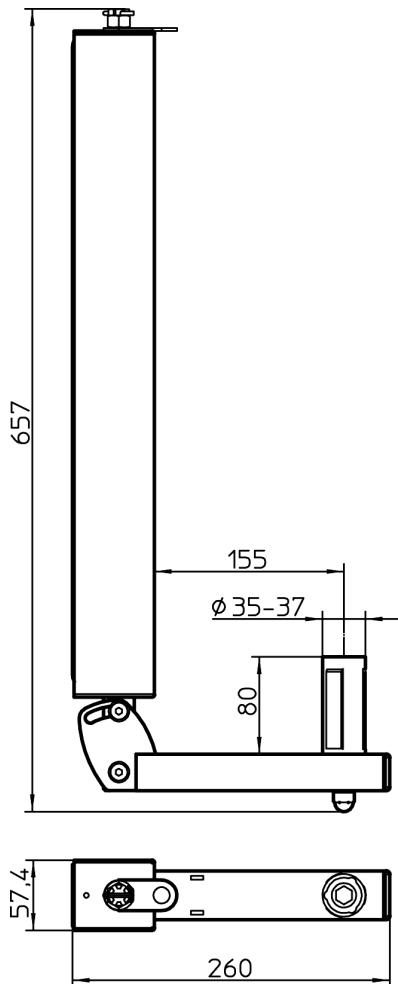
WALL MOUNT 1038-437B for GENELEC 1038CF/1238CF

adjustable in direction and angle

instruction manual

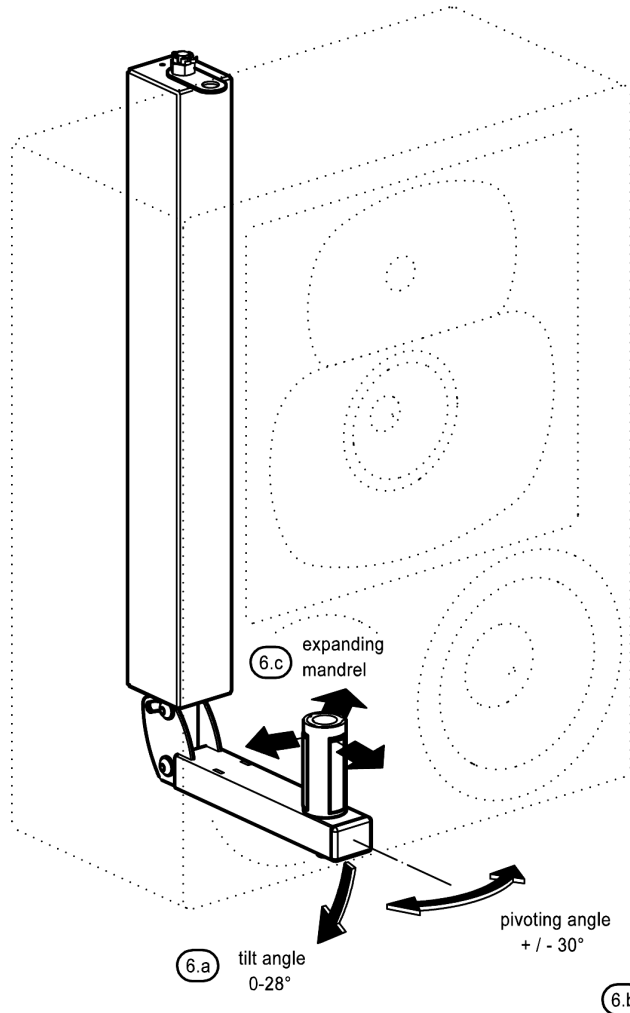
5. dimensions (mm)

Weight: 6.0 kg



6. settings

- 6.a tilt angle continuously adjustable down to 28° by fixing the upper bolted assembly
- 6.b Pivoting attachment around vertical axis
- 6.c Expanding mandrel for firm speaker fit



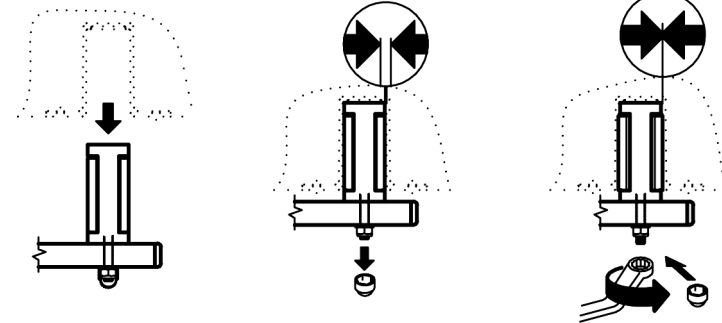
7. mandrel adjustment

SETTING UP of 1038CF/1238CF

7.a Set up the speaker upon the plugged-in mandrel

7.b Remove cap from the nut below the mandrel

7.c Screw-on the hex-nut M8 (13mm) until the expanding brackets fix the speaker

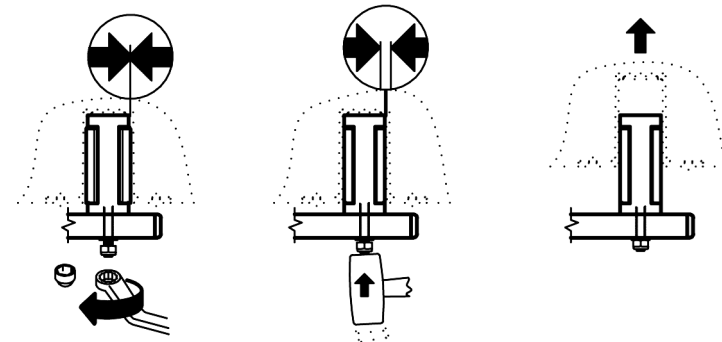


REMOVAL of 1038CF/1238CF

7.d Remove cap and loosen the hex-nut M8 (13 mm)

7.e Hit the thread (dosed force) with a mallet to release the tight brackets

7.f Remove the speaker



8. safety instructions

- only for GENELEC 1038CF/1238CF
- choose a position and mounting method compliant with local building codes and regulations
- for use only by trained installers -Use four anchors per wall bracket
- for use only at proper walls with adequate anchors (see 3.)
- not suitable are fragile walls. Beware of power supply lines and water conduits. Ask an expert
- inspect bolted assemblies periodically
- for indoor use only