

9402A

Quick Setup Guide



GENELEC®

The Genelec 9402A

The Genelec 9402A is an Audio-over-IP (AoIP) System Management Device that enables Smart Active Monitoring (SAM) monitors and subwoofers to connect to AoIP networks. The 9402A enables monitoring of immersive digital audio, supporting monitoring layouts up to 9.1.6 configuration when the low frequency effects (LFE) channel is also used.

The 9402A outputs up to 16 channels of AES/EBU digital audio for SAM monitors, with a dedicated AES/EBU interface for SAM subwoofers, and an auxiliary stereo AES/EBU output for other monitoring systems, such as for headphones, or an additional stereo monitor system.



Genelec warranty

Genelec products are supplied with a 2 year warranty from the date of purchase against manufacturing faults or defects. During that time Genelec and its distributors will cover the cost of warranty service labour and spare parts.

As part of our sustainability programme, Genelec provides an extension of 3 years of the parts-and-labour warranty. This extends the total warranty period to 5 years. To qualify for our extended 5-year warranty, register your Genelec product as the extended warranty is only available for registered products. A proof of purchase is needed when registering a product.

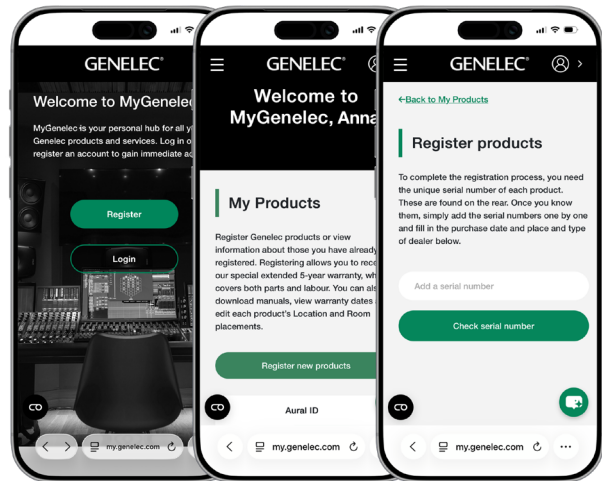
[genelec.com/product-warranty-lifetime](https://www.genelec.com/product-warranty-lifetime)



1 Register your product

Please register your device at my.genelec.com and learn more about warranty at MyGenelec. By joining MyGenelec, you'll be able to use all Genelec Cloud features, ask questions, share experiences and participate in discussions with Genelec users globally.

More information about service and technical support is available at genelec.com/customer-service.



2 Package contents

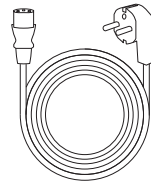
Genelec 9402A System Management Device. 9402A supports Dante, AES67 and ST2110-30 protocols.

Mains cable. 9402A supports universal mains voltage input with voltage in the range 100-240 VAC 50-60 Hz.

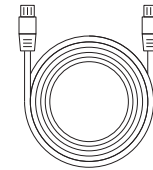
5 m GLM network cable.



9402A

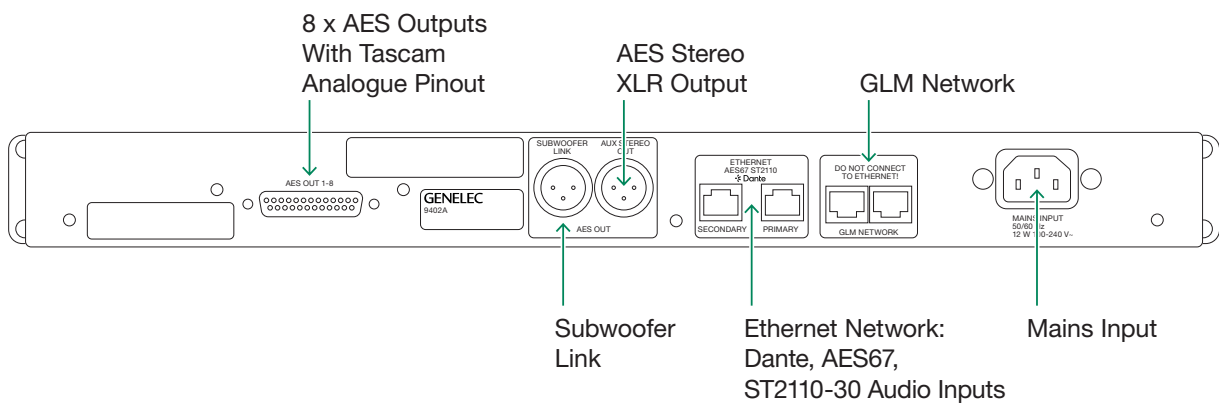


Mains cable



GLM network cable

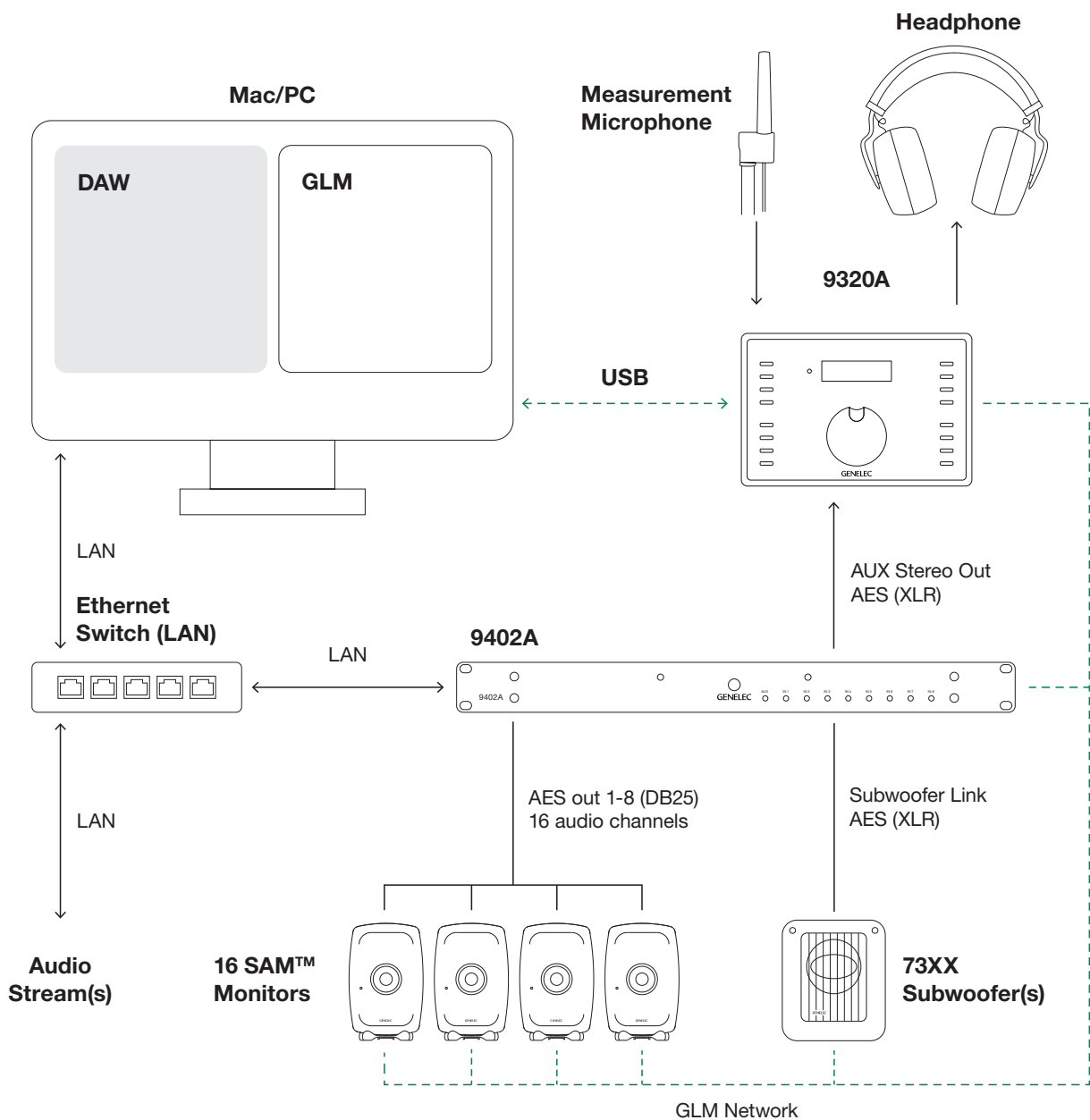
3 Connectors



4 System setup example

Connect an Ethernet cable from an IP switch to the 9402A primary Ethernet port. To create a working system, you will need:

- IP switch with Gigabit Ethernet (GbE) capability
- Dante, AES67 or ST2110-30 audio-over-IP stream source
- For 9402A setup and configuration, a computer running Windows 10-11 or later or macOS 10.11-12.0.x or later
- Genelec Loudspeaker Manager (GLM) software version 5.2 or later
- 9320A Reference Controller or standard GLM adapter
- Genelec SAM monitors and subwoofers.



5 Installing Genelec Loudspeaker Manager (GLM)

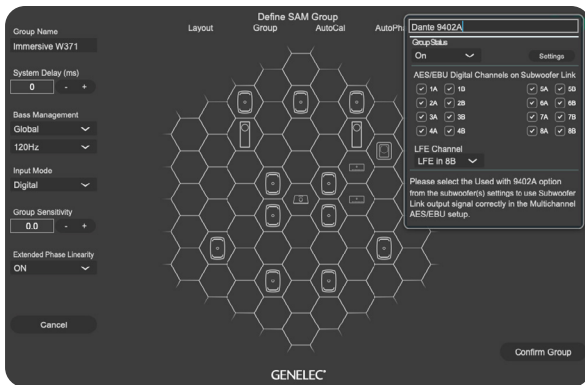
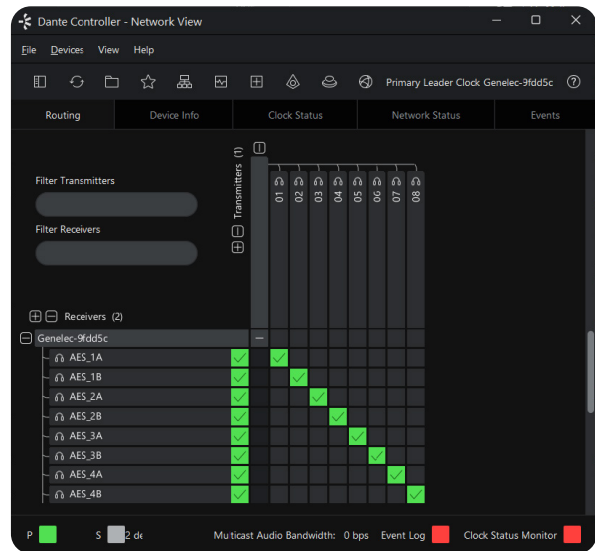


Please refer to the GLM download page at genelec.com/glm or directly to MyGenelec my.genelec.com to learn more about installation and usage of the GLM software.

6 Setting up audio streams

Dante Configuration

- Connect the 9402A to the primary Ethernet network (Gigabit network required).
- Open Dante Controller software and locate the 9402A device on the network.
- Assign the desired audio streams from the Dante source to the 9402A receiver channels.
- Ensure channel count is correctly mapped (16 output channels delivered via DB25).
- If required, enable AES67 compatibility mode in Dante Controller for AES67 streams.
- Use redundant network connections (primary + secondary) for ST2022-7 failover.
- Verify clocking via PTPv2 – 9402A can act as clock or follow network master.
- Confirm signal presence via front panel indicators before routing to monitors.



GLM System Configuration

- Connect all monitors, subwoofers, and 9402A to the GLM network.
- Launch GLM software and place devices into the system layout.
- Set monitoring group input mode to Digital.
- Assign LFE channel and subwoofer routing in GLM.
- Run automatic calibration and alignment for full system optimization.
- Store settings to devices for standalone operation.

7 Mounting

9402A can be mounted in a standard 19 inch rack frame. No minimum clearance for ventilation is needed around the interface.

More detailed information



More detailed information is available on the Genelec website. Please visit the 9402A product page to download the 9402A Operating Manual with measurements and detailed loudspeaker performance specifications.

[genelec.com/9402a](https://www.genelec.com/9402a)

The GLM software product page at [genelec.com/glm](https://www.genelec.com/glm) enables you to download a detailed Operating Manual for GLM, with examples of how to use the software for different applications.

GENELEC®

Factory & Headquarters

Genelec Oy
Olvitie 5
FI-74100 Iisalmi
Finland
T +358 17 83 881
genelec@genelec.com

Sweden

Genelec Sweden
Tureholmsvägen 12
125 35 Älvsjö
Sweden
T +46 8 449 5220
sweden@genelec.com

USA

Genelec Inc.
7 Tech Circle
Natick MA 01760
USA
T +1 508 652 0900
genelec.usa@genelec.com

China

Beijing Genelec Audio
Room 101, Building B33
Universal Business Park
No.10 Jiuxianqiao Road
Chaoyang District
Beijing 100015
China
T +86 10 5823 2014
T +86 400 700 1978
genelec.china@genelec.com

Japan

Genelec Japan Inc
2-22-21 Akasaka
Minato-ku
JP-107-0052 Tokyo
Japan
T +81 3 6441 0591
genelec.japan@genelec.com