

# Quick Guide

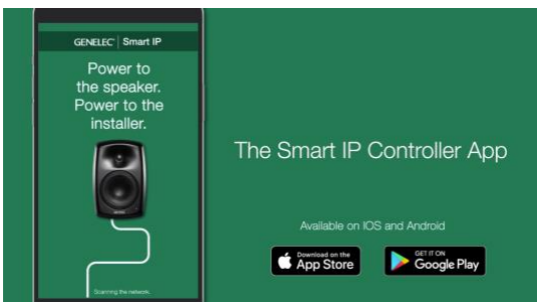
## Genelec Smart IP Controller



## 1 Introduction

Smart IP Controller is a mobile device app for daily management of the zones in a Smart IP system. This app is easy to install and configure to any Apple iOS or Android phone or tablet. The main functions allow adjusting the volume level and turning zones on and off.

The Smart IP Controller app can be downloaded from Google Play Store and Apple Store.



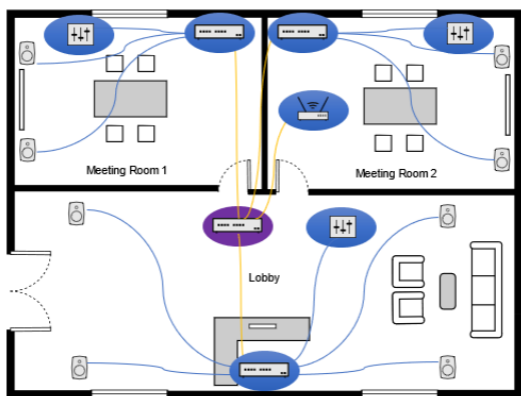
To use the app, first at least one zone is configured into the app. The Controller app first suggests using the Default Zone. If you have not configured any zones using the Smart IP Manager, this is the method you will use.

After configuring other zones using the Smart IP Manager, you will use the

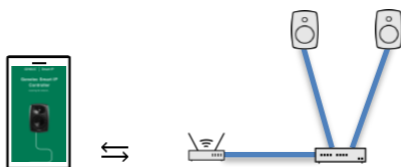
usernames and passwords for these other zones when you configure them.

## 2 Enabling App on WLAN

The Controller app requires a Wi-Fi router on the same network with the Smart IP loudspeakers. Your network usually takes care of this automatically. Just make sure your mobile device WLAN is turned on.



*Network cabling example.*



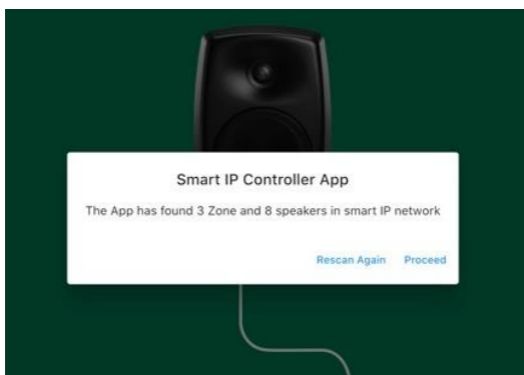
*Smart IP Controller on a simple network containing a WLAN access point, IP switch with PoE output to Smart IP loudspeakers.*

## 3 Configuring App

After installing the Smart IP Controller app, configure the app to control the zones. The App can be configured to control only one or several zones, depending on the intended use of the App. You can limit access by only configuring those zones in the app that you want to give access to.

Follow these steps to configure each zone. To add zone definitions to the Smart IP Controller do the following:

Launch the Smart IP Controller app. Wait until it has found all the loudspeakers in the network. Ensure that the number of speakers found matches the actual number of loudspeakers and zones. Then proceed. If not, try rescanning.



Start adding the first zone by clicking the '+' button. If it exists, the 'Default zone' will be shown.

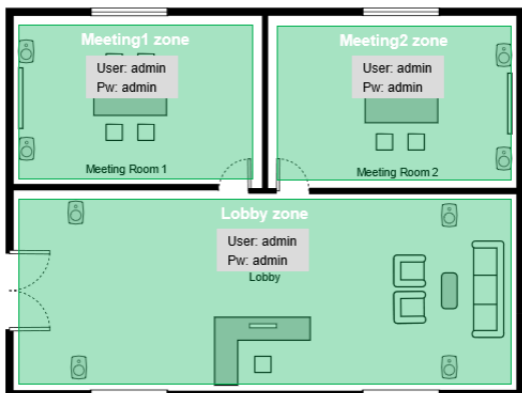


If the Default zone is the only zone you want to have, you can now move to using the Controller app.

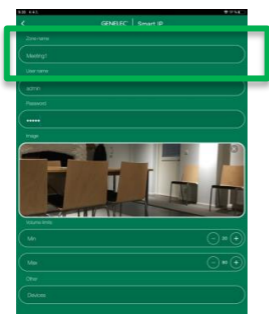
To add more zones besides the Default zone, click three dots on the left top corner and select **Access to New Zone**.



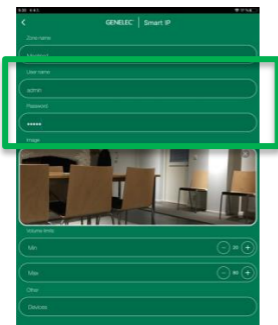
This is the floor plan for our example zone plan.



Type the name of the new zone, for example 'Meeting1' (Name is case sensitive).



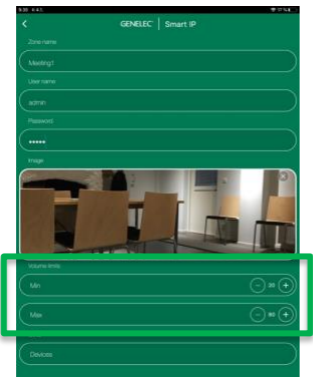
Give the username and password needed to access this zone.



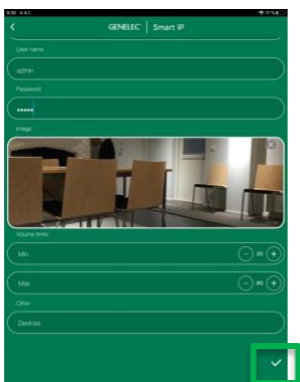
Add an optional image of this zone. Adding an image can make it easier to identify the zone.



Volume level range can be limited. Set the limits here. This can be useful e.g. to limit the maximum volume.



Confirm settings.



To add more zones, click again on the three dots on the top left corner and select **Access to New Zone** and repeat the steps to define the zone until you have completed all zone definitions.

## 4 App settings

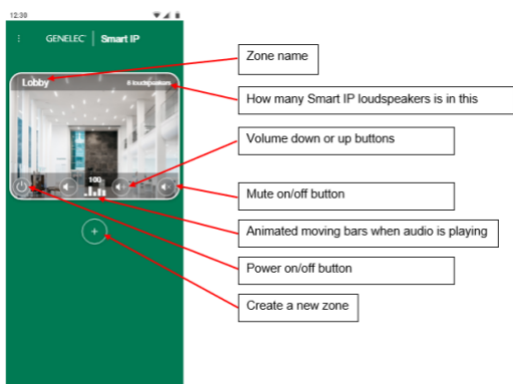


To edit the Controller app settings, click the three dots on the left top corner and select **Controller Settings**.

- **Hide Default Zone**; Default Zone is hidden on the main page.
- **Hide Not Assigned Zone**; zones with on Controller access are hidden.
- **Hide Zone Images**; hides zone images.
- **Enable Zone Editing**; If selected the zone can be edited by clicking the zone edit icon on the main page.
- **Enable Master Controls**; If selected the master control panel is visible on the main page. This enables to power off and mute of all the zones at once.
- **Reset Application**; removes all settings in the Smart IP Controller. Deletes all zones and settings.

## 5 Daily Use of App

Each zone is presented by the zone view. The example here shows a zone called 'Lobby'. In this view you can see the zone name, and the number of Smart IP loudspeakers in this zone.



The controls affect all the loudspeakers inside this zone. The controls for the zone include

- volume control by pressing + or – buttons
- power on/off
- mute the loudspeakers

The animated bars show if audio is playing in the zone.

# GENELEC®

Power to  
the speaker  
Power to  
the installer

## **International enquiries**

Genelec, Olvitie 5  
FI 74100, Iisalmi, Finland  
Phone +358 17 83881  
Fax +358 17 812 267  
Email [genelec@genelec.com](mailto:genelec@genelec.com)

## **In Sweden**

Genelec Sweden  
Tureholmsvägen 12  
SE-125 35 Älvsjö  
Sweden  
Phone +46 8 449 5220  
Email [sweden@genelec.com](mailto:sweden@genelec.com)

## **In the USA**

Genelec, Inc., 7 Tech Circle  
Natick, MA 01760, USA  
Phone +1 508 652 0900  
Fax +1 508 652 0909  
Email [genelec.usa@genelec.com](mailto:genelec.usa@genelec.com)

## **In China**

Beijing Genelec Audio Co.Ltd  
Room 101, Building B33  
Universal Business Park  
No. 10 Jiuxianqiao Road  
Chaoyang District  
Beijing 100015, China  
Phone +86 10 5823 2014  
Phone +86 400 700 1978  
Email [genelec.china@genelec.com](mailto:genelec.china@genelec.com)

## **In Japan**

Genelec Japan Inc  
2-22-21 Akasaka  
Minato-ku  
JP-107-0052 Tokyo  
Japan  
Phone +81 3 6441 0591  
Email [genelec.japan@genelec.com](mailto:genelec.japan@genelec.com)