

THE NEW 2025 COLLECTION

Satch

INSPIRED * BY YOU



Satch

BAGS AND MORE

Satch

BAGS AND MORE

Satch



You hang out. Alone. With a friend. With your friends. You are fully committed. Here, there, everywhere.

Sometimes you just do your own thing. A little of this, a little of that. Carving your own path. Left? Right? Either way, you keep pushing forward, full speed ahead. You've got your own style, your own rules, and a million ideas.

Which is why everything at satch is about you. While you're writing the script to your life, we're making the stuff you'll need along the way.

satch – Inspired by you.



For shoulders with a lot to shoulder.

No big deal thanks to our ergonomic design concept – the new satchel back support system guarantees maximum wearing comfort.

Height-adjustable chest strap

stabilizes the backpack while taking weight off your shoulder joints.

Your-Size-System

adjusts to your exact height (range: 1,40 m – 1,80 m) so the ergonomically shaped back panel will always sit perfectly.

Improved strap design

for an optimal fit and weight distribution across the upper body.



Optimized back panel

for child-friendly weight distribution in the lumbar region and along the spine.



Improved air circulation

thanks to an elongated channel with breathable Airway Mesh and 3D Softmesh on the contact surfaces.

Customized hip belt attachment

shifts weight from the shoulders to the pelvis (even on slim-hipped wearers).



More comfortable than ever

thanks to additional back padding and soft, springy 3D Softmesh on the shoulder straps, hip belt and back panel.



Your future is our present.

Sustainability at satch

Sustainability is not just a buzzword to us. It's been a reality we have been living by since our company was founded in 2012: Back in 2012, when we first launched our products, we were among the sustainability pioneers – making school bags from recycled PET. We never tire of challenging the status quo, which is why we are one of the biggest innovation drivers in the industry. Our new 2025 collection uses innovative materials and technologies to make our products even more sustainable:

PET recycling

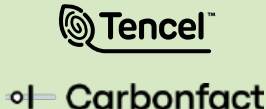
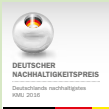
The high-quality materials used to manufacture our school backpacks and accessories are made of up to 100% recycled PET bottles. Since 2012, more than 140 million PET bottles have been given a new purpose instead of landing in the trash, helping conserve precious natural resources.

Textile recycling

We've been giving discarded clothing and textile scraps a new lease on life since 2024: thanks to Textile2Textile technology, the upper material on our Skandi Edition and leisure products are manufactured using repurposed textiles. This way we're helping to reduce new materials usage and conserve resources.

Strong partnerships ■ To us, sustainability means a lot more than just recycling. It's about doing whatever's best for the environment, the people behind our products, and especially for you and your future. But we can't do all of that alone, so we collaborate with some of the best partners in the industry. Together, we work towards even more responsible, environmentally friendly production while striving to increase our positive impact on nature and society.

WE CARRY PRODUCTS CERTIFIED WITH THE



Modal fibres

Our Special Edition Next Denim uses an extra-sustainable alternative material made of TENCEL™ modal fibres with Indigo Color technology and TENCEL™ modal fibres with climate-protecting features.

TENCEL™ modal fibres are made of the natural raw material wood and have been certified with the EU Eco-label for their exceptional environmental friendliness*.

It's a much more sustainable method of creating a classic denim look: the dye process consumes > 99 % less water and > 80 % less chemicals**, and no environmentally harmful processes like bleaching or stonewashing are involved.

(*EU environmental mark for textile products (license no. AT/016/001),** compared to three conventional dye methods)

Which satch is yours?

Three models, three sizes, so many great features:



Model comparison	match	UPDATE pack	air
Volume	30 L + 5 L	30 L	26 L
Weight	1200 g	1100 g	900 g
Volume expansion	✓	—	—
Compartments	4	5	3
Division	2 main compartments 1 front pocket 1 side organizer	2 main compartments 1 front pocket incl. organizer + mesh compartment	1 main compartment 1 front pocket incl. organizer
Side pockets	1	2	1
Padded laptop compartment	✓	✓	✓
Tablet compartment	✓	—	—
Your-Size-System (height adjustable: 1,40 m – 1,80 m)	✓	✓	✓
Dimensions (H/W/D)	30 / 24 / 45 cm	30 / 27 / 45 cm	28 / 16 / 45 cm
Easy to customize	TAG	SWAP	—
Manufactured from PET bottles (0.5 L)	28	20	14
RRP*	From 159,99 €	From 139,99 €	From 99,99 €

Your satch pack. As unique as you are.

Our jack-of-all-trades is better than ever. Modern design meets optimized fit and even smarter features.

- 30 L volume
- 1100 g
- 5 compartments incl. large organizer
- Clever interior organization
- Water-repellent materials
- Stylish shape
- Made from 20 recycled PET bottles (0.5 L)

From 139,99 € RRP*

Comfortable carry handle

Padded laptop compartment for safe transport

Reflective elements for better visibility

XL side pocket for larger bottles

Stable base

PACK



Blackjack
139,99 € RRP*



Bloomy Breeze
139,99 € RRP*



Crazy Twist
139,99 € RRP*



Blue Tech
139,99 € RRP*



Blurry Sky
139,99 € RRP*



Bright Faces
149,99 € RRP*



Caleido Blue
139,99 € RRP*



Coral Reef
139,99 € RRP*



Dark Skate
139,99 € RRP*

NEW

NEW

REFLECTIVE STYLE

NEW



Deep Petrol
139,99 € RRP*



Fire Phantom
139,99 € RRP*



Gradient Mint
139,99 € RRP*

NEW



Jurassic Jungle
139,99 € RRP*



Mint Phantom
139,99 € RRP*



Mystic Nights
139,99 € RRP*



Ninja Matrix
149,99 € RRP*

REFLECTIVE STYLE



Seismic Pink
139,99 € RRP*

NEW

GLOSSY STYLE



Purple Laser
149,99 € RRP*



Purple Phantom
139,99 € RRP*



Seismic Green
139,99 € RRP*

NEW



Lilac Blossom
139,99 € RRP*

NEW



Toxic Yellow
139,99 € RRP*

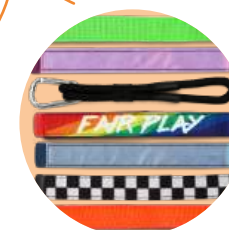


Vibrant Blue
139,99 € RRP*

NEW



Vivid Blue
139,99 € RRP*



Interchangeable SWAPS
with over 30 designs
From 9,99 € RRP*

SWAP YOUR STYLE

Interchangeable straps keep everything where it belongs and turn your satch pack into a one-of-a-kind style statement!

Brand new:
Attach up to
four SWAPS





5 L volume expansion for even more space

Clever interior organization

Reflective elements for better visibility

Minimalistic design

Extra front pocket offers additional storage space

SATCH

Your satch match.
As stylish as you are.

Tons of space and a cool design make our expandable school bag an ultra-practical fashion statement.

- 30 L + 5 L volume
- 1200 g
- 4 compartments incl. side organizer
- Padded laptop compartment and tablet compartment
- Side pocket for water bottle
- Water-repellent materials
- TAG: replaceable magnetic clasp
- Made from 28 recycled PET bottles (0.5 L)

From 159,99 € RRP*



Bloomy Breeze
159,99 € RRP*



Blue Tech
159,99 € RRP*



Seismic Green
159,99 € RRP*



Front pocket offers additional storage space



Ninja Matrix
169,99 € RRP*



Purple Laser
169,99 € RRP*



Dark Skate
159,99 € RRP*



Mystic Nights
159,99 € RRP*

REFLECTIVE STYLE

GLOSSY STYLE



Purple Phantom
159,99 € RRP*



Blackjack
159,99 € RRP*

NEW



TAG YOUR MATCH

TAGS to customise and exchange with more than 12 designs
From 5,99 € RRP*



Deep Petrol
159,99 € RRP*

Your satch air. As easy-going as you are.

Easy to pack and simple to use – our minimalist offers an impressive combination of optimized compartment layout and low weight.

- 26 L volume
- 900 g
- 3 compartments incl. organizer
- Clever interior organization
- Side pocket for water bottle
- Reflective elements
- Water-repellent materials
- Made from 14 recycled PET bottles (0.5 L)

From 99,99 € RRP*



NEW

Gradient Mint
99,99 € RRP*



Blackjack
99,99 € RRP*



NEW

Blue Tech
99,99 € RRP*



Dark Skate
99,99 € RRP*



NEW

Seismic Green
99,99 € RRP*



NEW

Deep Petrol
99,99 € RRP*



Mystic Nights
99,99 € RRP*



Purple Laser
99,99 € RRP*



Stylish by nature: your Skandi Style.

Minimalistic design, cool details,
Scandinavian color scheme.

In short: a timeless style statement.

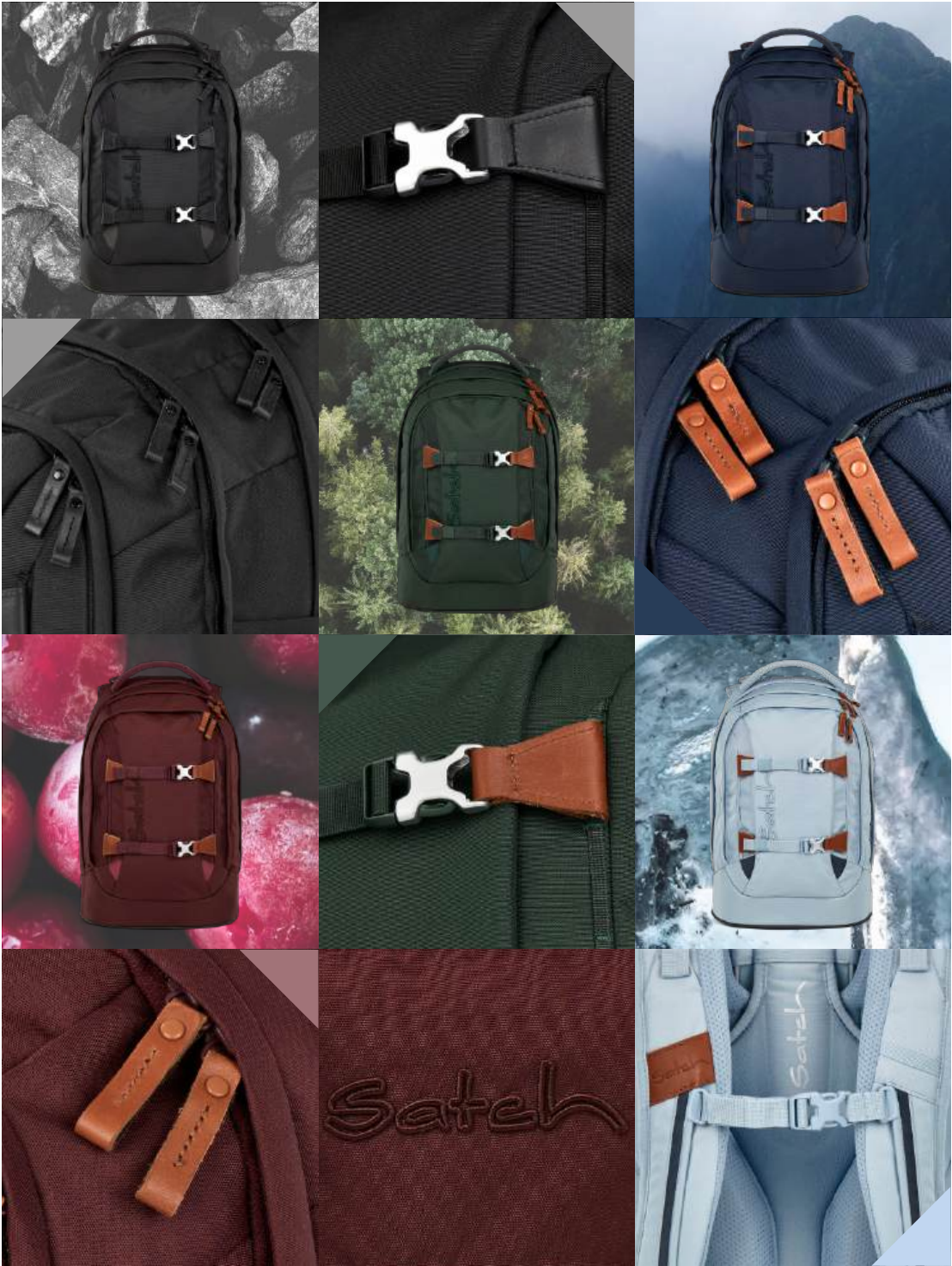
Skandi Edition



Recycling innovation

Skandi Styles with Textile2Textile technology.

Speaking of statements: We are not only inspired by nature, we also respect it – with Textile2Textile. An extra-sustainable production method rooted in textile recycling. We’re doing our part to conserve natural resources by reducing the usage of new materials.



Nordic eye-catchers

- High-quality leather details
- Striking metal buckles
- Stylish stichted logo

You'll find all of our Skandi Style school bags and accessories on the last page of our collection overview.

pack 159,99 € RRP* ■ match 169,99 € RRP* ■ air 109,99 € RRP* ■ Duffle bag 49,99 € RRP* ■ Gym bag 29,99 € RRP* ■ Pencil box 29,99 € RRP* ■ Pencil Slider 24,99 € RRP* ■ Wallet 17,99 € RRP*

Special Styles



Cool **statement prints** on the bottom of the Pencil boxes and gym bags



Pencil box
Crossed Blue
29,99 € RRP*

pack
Crossed Blue
159,99 € RRP*

Duffel bag
Crossed Blue
49,99 € RRP*

These **special styles** take you one step further. The eye-catching **criss-cross lacing** in contrasting colors, is reminiscent of trendy outdoor trainers. Super street-style, right?

WHAT'S HOT: YOUR SNEAKER STYLE.



pack
Crossed Sand
159,99 € RRP*

Pencil box
Crossed Sand
29,99 € RRP*

Duffel bag
Crossed Sand
49,99 € RRP*

Carry the new duffel bag in four ways: Crossbody, single-shoulder, in one hand or as a backpack



Cool laces

Reflective logo

Stylish color accents

Statement print on bottom

Special
Edition

BEST JEANS EVER: YOUR NEXT DENIM STYLE.

Trendy
denim look



Stylish jeans
details and rivet
decorations

Space for
four SWAPS

Like your favorite jeans, only better!

Our Next Denim Edition uses two innovative types of fibres: TENCEL™ Modal with Indigo Color technology and TENCEL™ Modal with climate-protection features. These natural synthetic fibres create the denim look you love more sustainably than ever, since they don't require a subsequent dye process:

- Saves >99% on water and >80% on chemicals*
- No environmentally harmful stone-washing or bleaching processes
- Dye never rubs off

*compared to three conventional dye methods. TENCEL™ is a Lenzing AG brand.



Available
only as a set:
229,99 € RRP*



Washed Blue Set
229,99 € RRP*

Washed Blue Features
Light jeans style, exchangeable fringe SWAPS, decorative rivets, »weathered« look details



Denim Blue Features
Denim Blue look, exchangeable SWAPS, decorative rivets, jeans-style seams



Denim Blue Set
229,99 € RRP*

All for you. For your everything else.

School's more than just books and folders, which is why we think outside the classroom box. From wallets to gym bags and raincoats, you can rely on satch.

ACCESSORIES



1

Pencil box
In 34 designs
From 24,99 € RRP*

Including set square ■ Compartment with organizer function ■ Recycled from 3 PET bottles (0.5 L)

2

Wallet
In 28 designs
From 15,99 € RRP*

Endless organization options ■ Transparent window ■ Large compartment for coins and banknotes ■ Eyelet for attaching chains ■ Recycled from 1 PET bottles (0.5 L)

3

Gym bag
In 29 designs
From 24,99 € RRP*

Easily attached to backpack ■ Fits on all satch school bags ■ Recycled from 10 PET bottles (0.5 L)

4

Pencil Slider
In 29 designs
From 19,99 € RRP*

Stable base ■ Three interior compartments ■ Secret pocket ■ Recycled from 2 PET bottles (0.5 L)

5

Duffle bag
In 31 designs
From 44,99 € RRP*

Practical shoe compartment ■ Small inner zip pocket ■ Padded shoulder strap ■ Two carrying handles ■ Carry in four different ways ■ Recycled from 9 PET bottles (0.5 L)

Info ■ Check our collection overview on the last page for even more matching accessories and backpacks in different colors.



Folder box
From 7,99 € RRP*

DIN A4 ■ Transparent ■ Comfortable carrier handle



Tripleflex folder box
In 6 designs
From 19,99 € RRP*

Colorful inside material ■ Front pocket ■ Comfortable carrier handle ■ DIN A4 ■ Three compartments for easy organization ■ Stable design keeps notebooks crease-free ■ Recycled from 10 PET bottles (0.5 L)



Laptop Sleeve
In 2 designs
From 19,99 € RRP*

For up to 14" tablets and laptops ■ Extra-thick padding ■ Water-repellent ■ Fits in any satch backpack ■ Anti-scratch ■ Recycled from 2 PET bottles (0.5 L)



Clutch
In 4 designs
From 19,99 € RRP*

Removable shoulder strap ■ Elasticated closure ■ Zip compartment ■ Zip chain ■ Mirror inside main compartment ■ Recycled from 2 PET bottles (0.5 L)



Rain cover
In 5 designs
From 14,99 € RRP*

Fits all satch backpack models ■ Reflective ■ Waterproof





Stainless steel lunch box
In 6 colors
From 34,99 € RRP*

Three-part design: removable divider and extra snack box ■ Durable stainless steel 18/8 ■ Secure lid with removable silicone seal ■ Easy to clean ■ BPA-free ■ Odor-free ■ Food safe ■ Dishwasher safe (up to 65°C)



Lunch box
In 6 colors
From 19,99 € RRP*

Two-part design: removable divider ■ Durable plastic ■ Secure lid with removable silicone seal ■ Easy to clean ■ BPA-free ■ Odor-free ■ Food safe ■ Dishwasher safe (up to 65°C)



Sport drinking bottle
In 8 colors
From 17,99 € RRP*

650 ml ■ Durable plastic (Tritan™) ■ 100% leak-proof ■ For drinks with little to no carbonation ■ Dishwasher safe (up to 65°C) ■ BPA-free



Stainless steel drinking bottle
In 12 colors
From 24,99 € RRP*

500 ml ■ 18/8 durable stainless steel ■ 100% leak-proof ■ For drinks with little to no carbonation ■ Double-walled insulation (drinks 0–85°C) ■ Dishwasher safe (up to 65°C) ■ BPA-free

The perfect break crew: your lunch box, your bottle, and you.



World wide woohooooo! More than just backpacks in our bag of tricks.

School's just one part of life!
Which is why satch has so
much more than just school
supplies – everything you need
for travel and leisure, too!

LET'S
GO



FLOW M
Check-In Trolley
In 10 designs
From 169,99 € RRP*



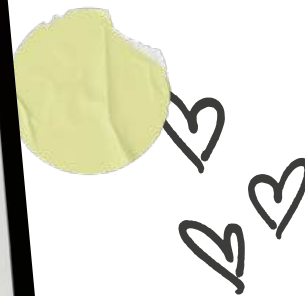
FLOW S
Cabin Size Trolley
In 10 designs
From 149,99 € RRP*



CROSS EASY
The small one
In 5 designs
From 16,99 € RRP*



FLY
The daypack
In 8 designs
From 49,99 € RRP*



CROSS
The hip bag
In 8 designs
From 24,99 € RRP*



Recycling Innovation

Our leisure products (cross and fly)
use sustainable Textile2Textile
technology. We use recycled textiles
to make the upper material, which
conserves natural resources.

For even more
styles, visit:
satch.com/free

Made for you!

Yours and yours alone.

Together with our graffiti artists, you can make your satch stand out from the crowd. The satch Spray Day: free and over 600 events across many European countries every year.

For details and scheduling info:
satch.com/en/spray-days
Share your style: #satchsprayday

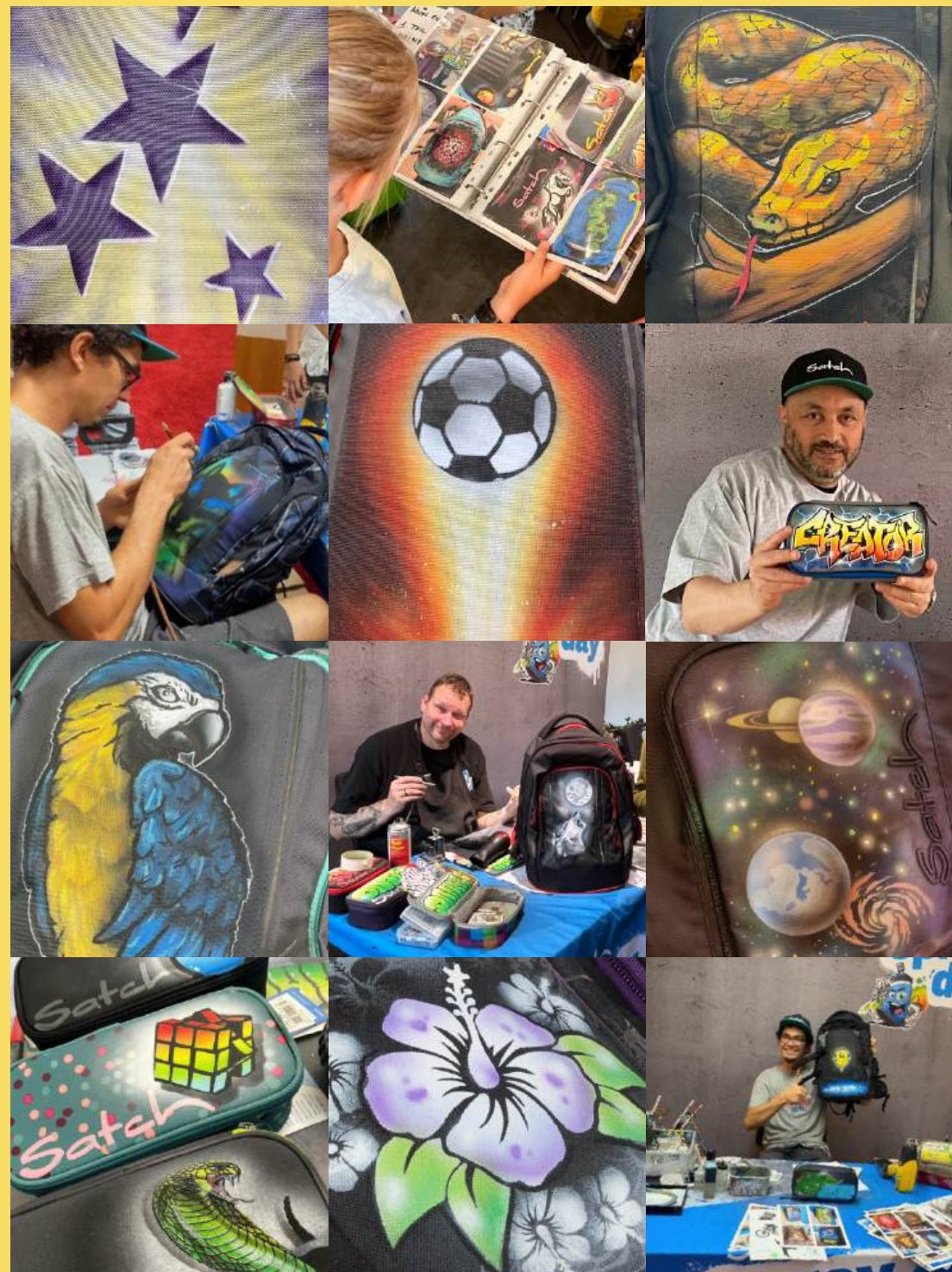
satch
Events



Satch spray day



powered by
edding





Your retailer:

SAT-W25-KBR-ENG ■ * RRP= Recommended retail price ■
Images may deviate from the original.

FOND OF® ■ FOND OF GmbH
Vitalisstr. 67, 50827 Cologne
service@satch.com ■ satch.com

Satch

BAGS AND MORE

Satch

BAGS AND MORE

Satch