

Lion Sands Ivory Lodge/Fish Eagle Residence | T +27 (0)87 980 4228
 Lion Sands River Lodge | T +27 (0)13 735 5000
 Lion Sands Tinga Lodge/Hinkwenu Residence | T +27 (0)13 735 8400
 Lion Sands Narina Lodge | T +27 (0)13 735 8100
 MORE Collection - Head Office/Reservations | T +27 (0)11 880 9992 | E res@more.co.za
www.more.co.za



Fact Sheet

| | |
|-------------------------------------|---------|
| MORE Collection | Page 1 |
| About Lion Sands Game Reserve | Page 1 |
| About the Lodges | Page 2 |
| About the Residences | Page 2 |
| About Lion Sands Treehouses | Page 2 |
| About Community Tours | Page 3 |
| Highlights | Page 3 |
| Location Info | Page 3 |
| Weather Info | Page 3 |
| Best Time to Travel | Page 3 |
| Health Info: Malaria | Page 3 |
| Architectural Layouts | Page 4 |
| Reference Table | Page 10 |

ABOUT MORE COLLECTION

MORE Collection owns and manages a collection of luxury safari lodges, boutique hotels, and exclusive-use residences in South Africa offering seamless itineraries between our properties. Led by custodian and CEO Robert More, ours is a fourth-generation family business – our origin dates to 1933 when our great grandfather Guy Aubrey Chalkley purchased the land that Lion Sands Game Reserve was later established on. We now have four luxury lodges at Lion Sands.

Our footprint is in four unique safari reserves – Sabi Sand, Kruger, Thornybush, and Marakele, - and our hotel in the vicinity of one Natural Wonders of the World, Table Mountain. Our properties include Lion Sands Game Reserve (Mpumulanga), Marataba Game Lodges and Monwana Game Lodge (Limpopo), Cape Cadogan Boutique Hotel (Western Cape). We are committed to protecting the environment, community development, sustainability principles, and delivering on our purpose of creating life-enriching experiences for our guests.

ABOUT LION SANDS GAME RESERVE

Lion Sands is the only private reserve rooted in both the Sabi Sand Nature Reserve and Kruger National Park. The lodges offer exclusive traversing on private concessions. We have 10.5km of exclusive river frontage on the perennial Sabie River with our four luxury riverside lodges – Ivory, River, Tinga, and Narina. The river attracts a diversity of wildlife that guests can view from the lodge or their room.

Lion Sands conserves 12 400ha (30 600ac) of a habitat that is home to the highest and most diverse concentration of wildlife in the southern hemisphere offering exceptional game-viewing opportunities. Natural animal populations include the Big Five, along with a supporting cast of 150 mammal species and over 500 varieties of bird, and the reserve is renowned for the quality of its leopard viewing. Enjoy morning and afternoon game drives with our highly qualified field guides and trackers. Bush dinners and boma dinners will have you dining under the African stars.

The reserve includes the iconic Lion Sands Treehouse experiences (Chalkley Treehouse, Kingston Treehouse, and Tinyeleti Treehouse).

ABOUT THE LODGES

Ivory Lodge is all about *inspiring deep connections* to nature and one another. This five-star premium status lodge epitomises the essence of luxury and offers utter exclusivity with just eight one-bedroom Suites that witness the passage of much of the reserve's wildlife. Each Suite is spacious with a covered deck, separate lounge with fireplace and a private plunge pool. Ivory Lodge's building style melds into the riverscape and impresses with a natural and simple beauty with many places to relax and soak up the moment. Enjoy some me time at the spa or burn off some energy in the fitness centre. Guests have the opportunity to engage with artists on the Artist Residency programme in the MORE Gallery. A dedicated Kosher kitchen is on site for our kosher guests.

River Lodge offers a *connection-rich safari* with 18 rooms and social areas like the outdoor fire deck, veranda and bar area to gather and catch up on the day. The lodge has a chic design interpretation of the traditional safari lodge with contemporary décor and limited walls that create a flow between interior and exterior with a sense of brightness and space. Wooden walkways connect the main lodge to a spa, a fitness centre and pool. There are eight Luxury Rooms, six Superior Luxury Rooms (two sets with interleading rooms), and four River Suites our most spacious and private. Each of the River Suites has a private plunge pool, with one of the River Suites ideally suited for families with two bedrooms. All our Rooms and Suites are set along the path revealing splendid river views. Kosher catering is available. Browse the MORE Gallery and turn wildlife photographs into artful souvenirs in the Creative Lab.

Tinga Lodge is the *classic safari experience*, with a focus on the senses. Nine luxury suites capture the romance of the pioneer era, in considerably more comfort. Set apart on a high bank up from the Sabie River, each Suite is privately set with its own plunge pool and deck overlooking the water making the most of a view that often sees wildlife passing through. There is also a spa/wellness centre and fitness centre, the main lodge with its bar lounge, library, guest pool and boma offering spaces to enjoy the company of others, or some personal quiet moments. Mack & Madi Kids' Adventure is our dedicated children's programme available at Tinga Lodge and offers a wide variety of activities on site that keep the young ones entertained. There is a dedicated playroom for arts & crafts, baking and more. Special scavenger hunts on game drives and fun 'sundowner' stops of milkshakes or hot chocolate, will create some long-lasting memories. Our Creative Lab is available for photographers to turn their images into works of art.

Narina Lodge is a place *nurturing natural beauty*. Perched on stilts under a canopy of 100-year-old trees just up from the water, Narina Lodge offers guests a wonderful sense of remoteness and peace, and panoramic views of the Sabie River from the main lodge or one of the nine private luxury suites. Like the Narina Trogon bird after which it is named, the lodge is astonishingly beautiful, yet blends unassumingly into the natural environment. The spa has a generous view of the passing wildlife as guests enjoy luxurious treatments. Those feeling energetic and keen to keep to their training schedule can head over to the fitness centre. Guests have the opportunity to engage with artists on the Artist Residency programme in the MORE Gallery.

ABOUT THE RESIDENCES

Fish Eagle Residence is located at Ivory Lodge and Hinkwenu Residence is located at Tinga Lodge. Both are private homes that come with a personal chef, residence butler, as well as a dedicated field guide team and safari vehicle for a private game viewing experience.

Fish Eagle comprises three bedrooms, each with an en-suite bathroom. It has an open living space with a fully equipped kitchen, lounge, study, and dining area. The expansive deck and covered patio walk onto a 10-metre-long lap pool, while a private fire deck overlooks the Sabie River for quiet enjoyment of the natural environment.

The two-bedroom Hinkwenu Residence features en-suite bathrooms with outdoor showers, a welcoming lounge and a pool deck with a private pool. The open-plan kitchen and dining area are perfect spaces for sharing meals. True to its name, Hinkwenu - meaning "together" in Shangaan - creates the perfect setting for treasured moments with loved ones.

ABOUT LION SANDS TREEHOUSES

Million-star Chalkley and Kingston (on the Sabi Sand side) and Tinyeleti (on the Kruger Park side) are the ultimate bush bedrooms. Here romantics, adventurers, and solitude seekers alike can discover the magic of a night out in Africa - in complete luxury. Each of the Treehouses are unique in character. Chalkley Treehouse, the original adventure, has panoramic views of the open plains. Tinyeleti Treehouse offers a starry riverside retreat. Kingston Treehouse is the ultimate luxury escape with a view over the treetops. All our treehouses have bathroom facilities with hot running water.

Guests arrive at sunset for sundowners followed by a picnic dinner and can spend the dusk hours watching animals wander past (at a safe distance and with a bird's eye view), then fall asleep counting shooting stars. A field guide is always a radio call away.

The Treehouse Experience is booked in conjunction with accommodation at the lodge, with the room available for returning to at any point.

ABOUT COMMUNITY TOURS

Facilitated by More Community Foundation, this experience offers an authentic look into daily life in Huntington and Justicia B communities, showcasing the power of collaboration and community resilience. You'll witness how shared goals are pursued and how both the lodge and communities hold each other accountable for sustaining impact. Visit our Early Childhood Development Centres where every initiative - from school gardens to classrooms - is co-created with local leadership and built toward self-sufficiency.

HIGHLIGHTS

- Lion Sands Kruger National Park is one of only seven private park concessions and protects pristine wilderness, as well as sites of cultural and historical significance
- Lion Sands Sabi Sand forms part of Sabi Sand Nature Reserve – the oldest private nature reserve in South Africa, established in 1948, with our grandfather as one of the founders, and still in our custodianship four generations later, instilling a legacy of community and conservation
- Non-migratory species so guaranteed safari experiences all year round
- The perennial Sabie River is renowned for attracting a diversity of wildlife and we have front row seats
- Exceptional, FGASA-accredited MORE Field Guides and highly knowledgeable Trackers
- Only six people per safari vehicle
- Four distinct lodges that suit guest's individual preferences
- Ivory Lodge is one of only 11 properties in the country to be awarded 5 Star Premium status by the Tourism Grading Council of South Africa
- The unique experiences of a night in our iconic Lion Sands Treehouses (Chalkley, Kingston, and Tinyeleti)
- All dietary needs are accommodated - Vegan, Vegetarian, Reductarian, Halal etc - and there are Kosher catering options at Ivory Lodge and River Lodge
- Artist Residency for renowned and upcoming South African artists - a gallery and studio are situated within Ivory Lodge and Narina Lodge, where artists showcase their existing and new creations whilst sharing their creative process with guests
- Mack & Madi Kids' Adventure at Tinga Lodge, Hinkwenu Residence and Fish Eagle Residence offers a wide variety of activities on site that keep children entertained and encourages them to discover, learn, create, and express themselves
- Creative Labs at River Lodge and Tinga Lodge for professional and novice wildlife photographers - our photographic specialist helps transform photos into canvas artworks for the ultimate keepsake
- Voted amongst the best lodges in the Condé Nast Traveller Readers' Choice Awards and in the Travel & Leisure's Top 100 Hotels in the World!
- All four lodges are within 12km (7mi) of Skukuza Airport and easily accessible by road from Johannesburg and Cape Town
- Flight connections from Nelspruit to Victoria Falls and Mozambique
- Seamless itineraries can be arranged between the MORE Collection properties

LOCATION

Lion Sands Ivory Lodge and River Lodge: Located in the south of the private Sabi Sand Game Reserve, which protects 65 000ha (160 600ac) of, arguably, Africa's most pristine Big Five territory.

GPS co-ordinates: Ivory Lodge 24°58'24.1"S | 31°31'46.5"E; River Lodge 24°58'16.9"S | 31°31'55.4"E

Lion Sands Tinga Lodge and Narina Lodge: Situated in the south of the Kruger National Park which, covering nearly two million hectares, is home to more mammal species than any other game reserve on the continent.

GPS co-ordinates: Narina Lodge 24°57'43.41"S | 31°33'46.51"E; Tinga Lodge 24°58'16.94"S | 31°35'0.54"E

WEATHER

The average maximum temperatures range from 24°C/75°F in July to 33°C/90°F in January, with the lowest average minimum occurring in July at 8°C/46°F. The average annual rainfall is 350mm (14in), most of which occurs during midsummer (December – February). Rain is usually in the form of thundershowers, where a downpour is experienced, very seldom lasting longer than a few hours.

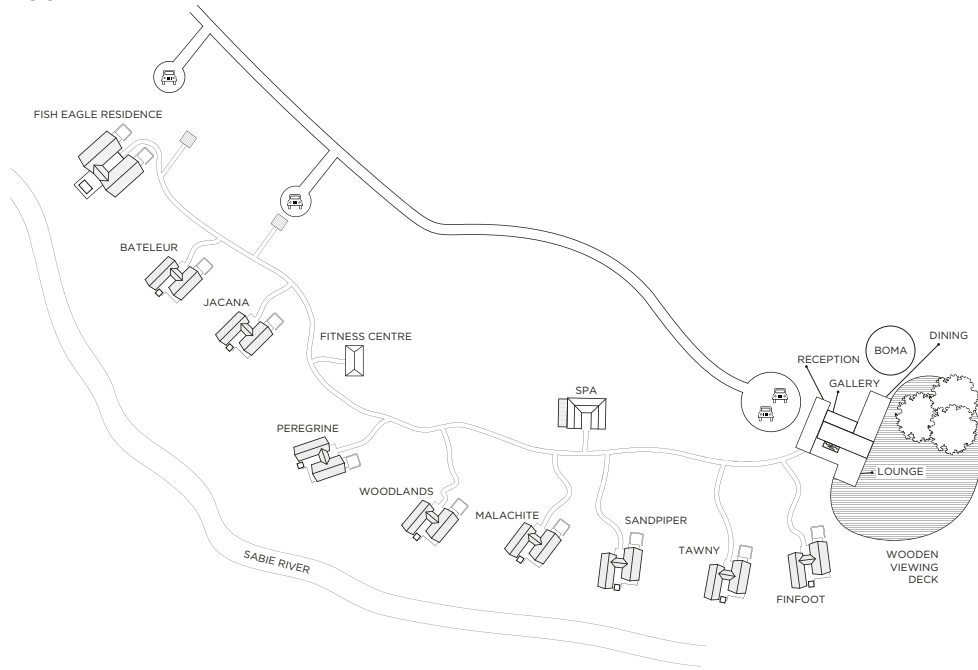
BEST TIME TO TRAVEL

A year-round safari destination. The animals in Lion Sands Game Reserve are non-migratory, and variation in the safari experience is season-, rather than location-, related. The best period for birdwatching is from October to April.

HEALTH INFO: MALARIA

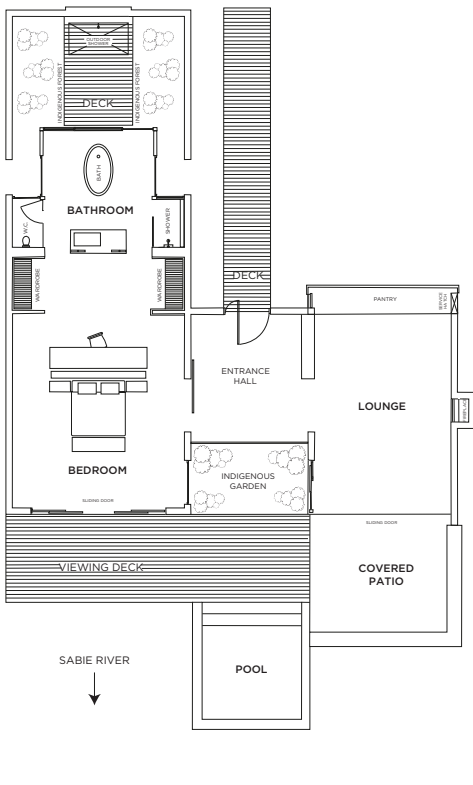
Lion Sands Game Reserve is located in a moderate-risk malaria area, and we urge guests to consult their doctors about malarial prophylactics before visiting.

IVORY LODGE LAYOUT



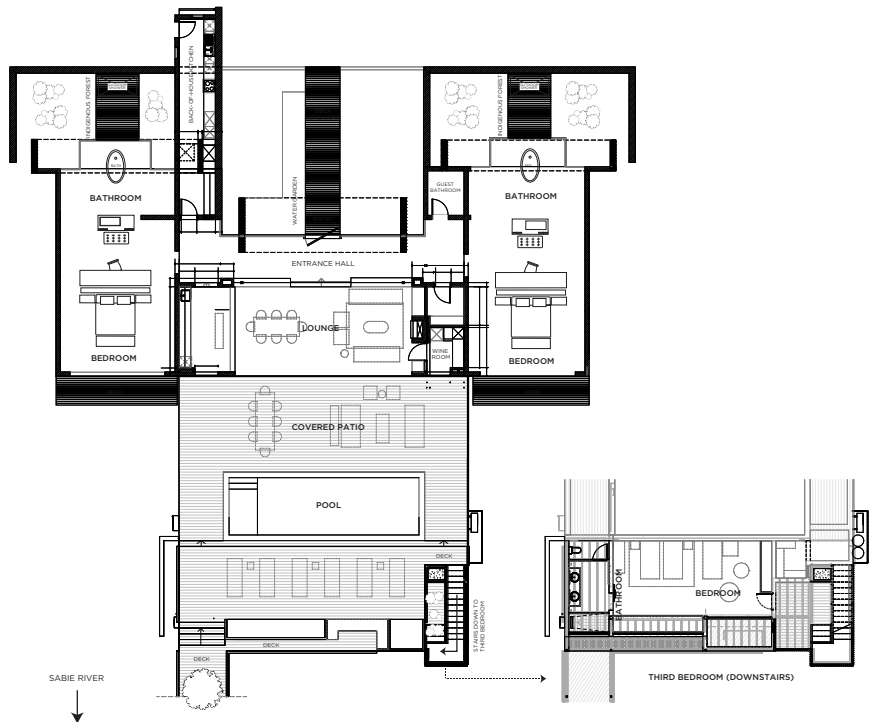
IVORY LODGE ONE-BEDROOM SUITE LAYOUT

Suite - 1 561ft² | 145m²
 Viewing deck - 301ft² | 28m²
 Total - 1 862ft² | 173m²

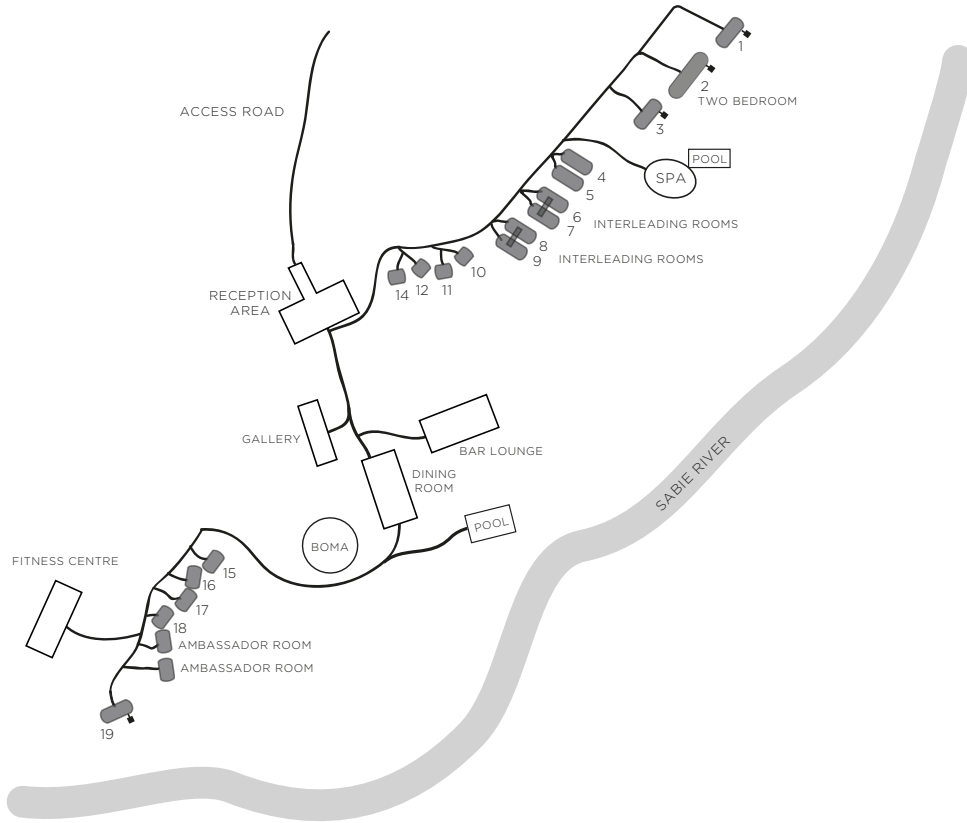


IVORY LODGE THREE-BEDROOM FISH EAGLE RESIDENCE LAYOUT

Upper Area Suites - 140 m² | 1 506 ft²
 Living Area - 357 m² | 3 842 ft²
 Viewing Deck - 77 m² | 828 ft²
 Third Bedroom - 52 m² | 559 ft²
 Total - 580 m² | 6 350 ft²

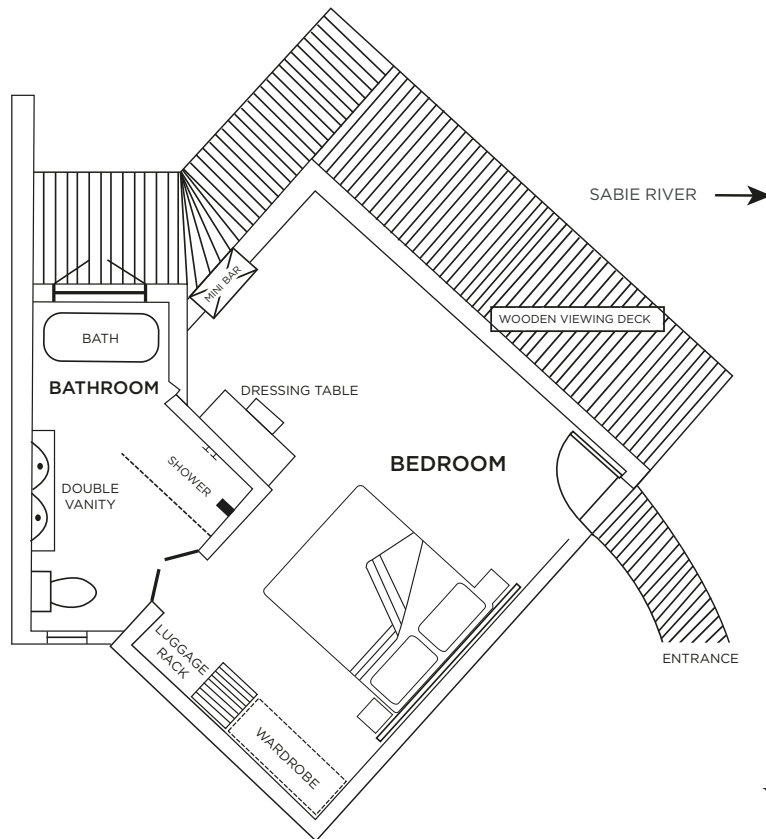


RIVER LODGE LAYOUT



RIVER LODGE LUXURY ROOM LAYOUT

Room - 581ft² | 54m²
 Exterior - 129ft² | 12m²
 Total - 710ft² | 66m²

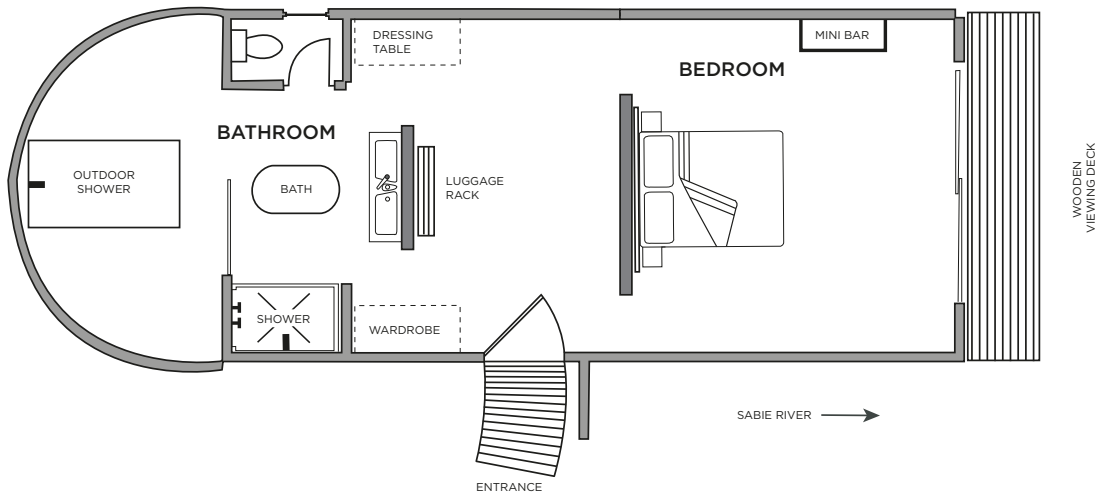


**RIVER LODGE
SUPERIOR LUXURY ROOM LAYOUT**

Room - 840ft² | 78m²

Viewing deck - 215ft² | 20m²

Total - 1 055ft² | 98m²

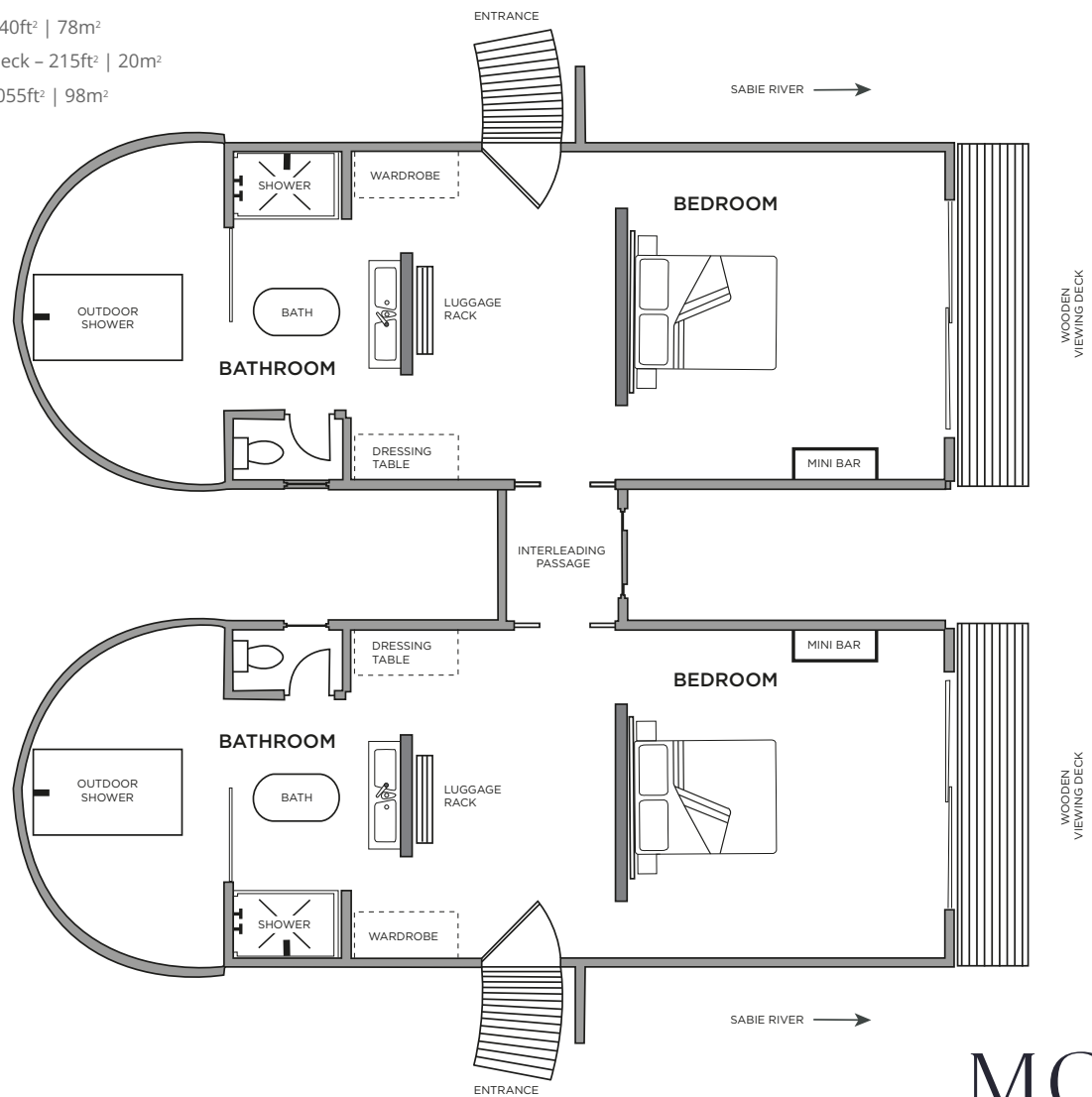


**RIVER LODGE
INTERLEADING SUPERIOR LUXURY ROOM LAYOUT**

Room - 840ft² | 78m²

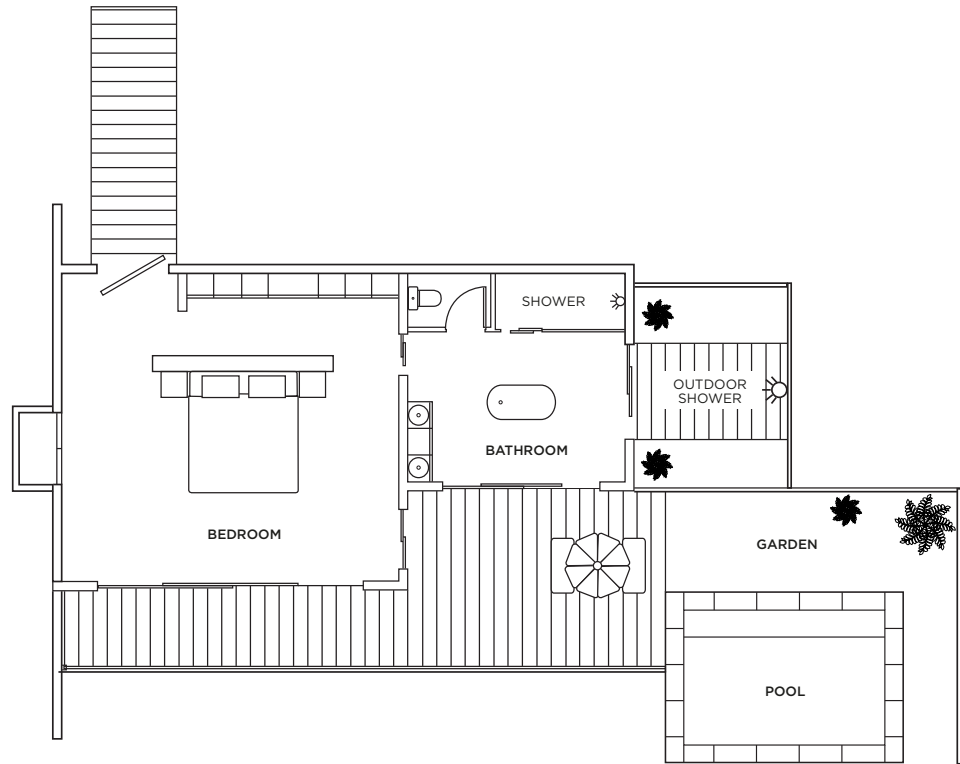
Viewing deck - 215ft² | 20m²

Total - 1 055ft² | 98m²



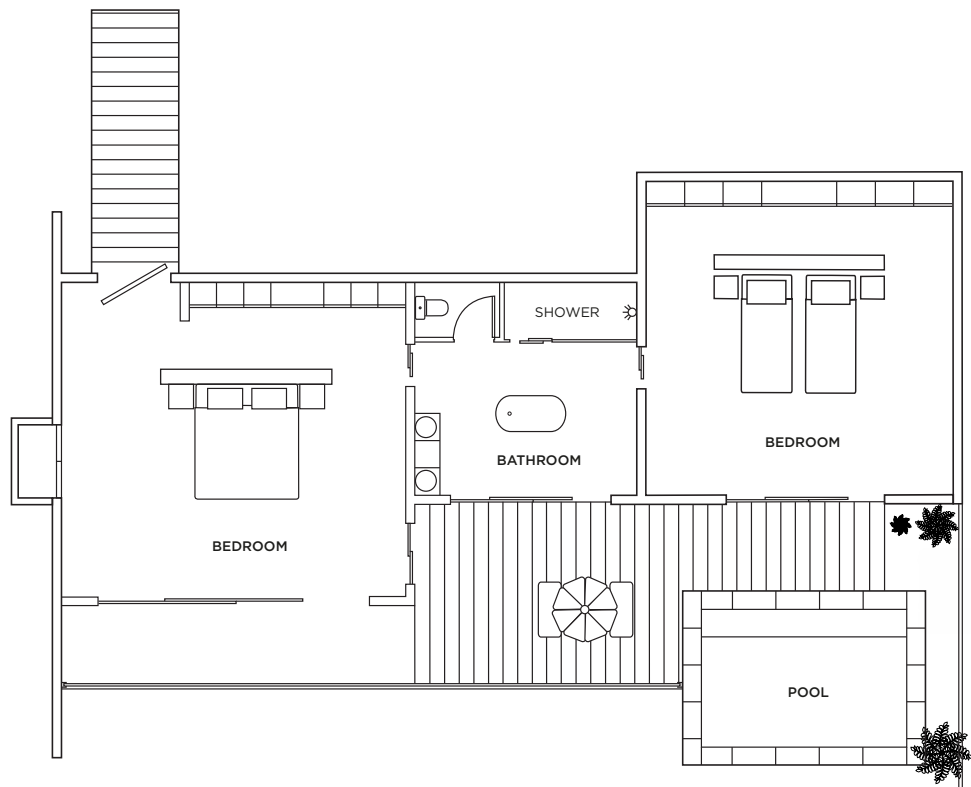
**RIVER LODGE
ONE-BEDROOM RIVER SUITE LAYOUT**

Suite - 883ft² | 82m²
 Outside shower - 129ft² | 12m²
 Viewing deck - 301ft² | 35m²
 Pool - 140ft² | 13m²
 Total - 1 453ft² | 142m²

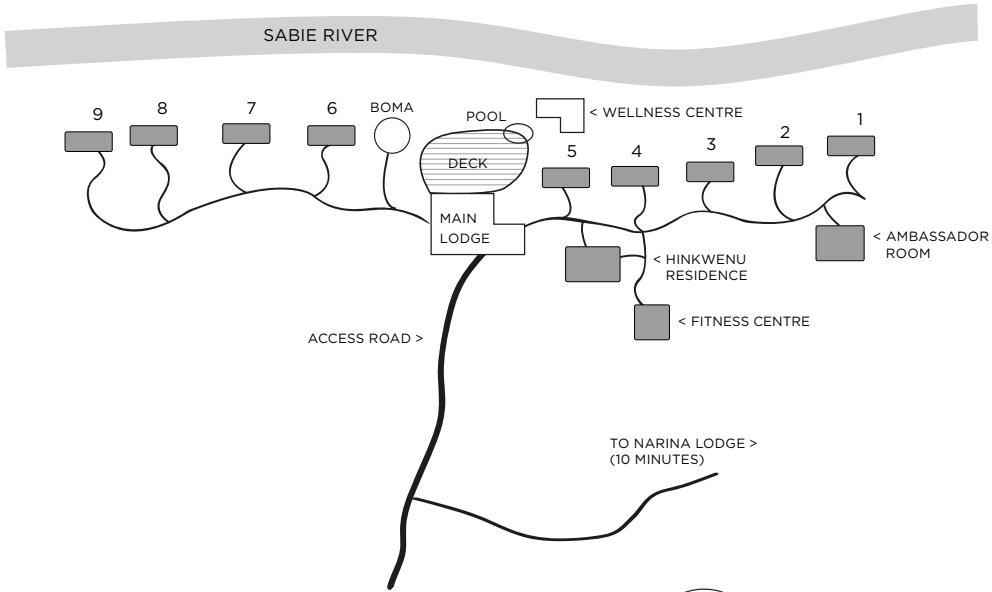


**RIVER LODGE
TWO-BEDROOM FAMILY RIVER SUITE LAYOUT**

Suite - 1 324ft² | 123m²
 Viewing deck - 452ft² | 42m²
 Pool - 140ft² | 13m²
 Total - 2 058ft² | 178m²

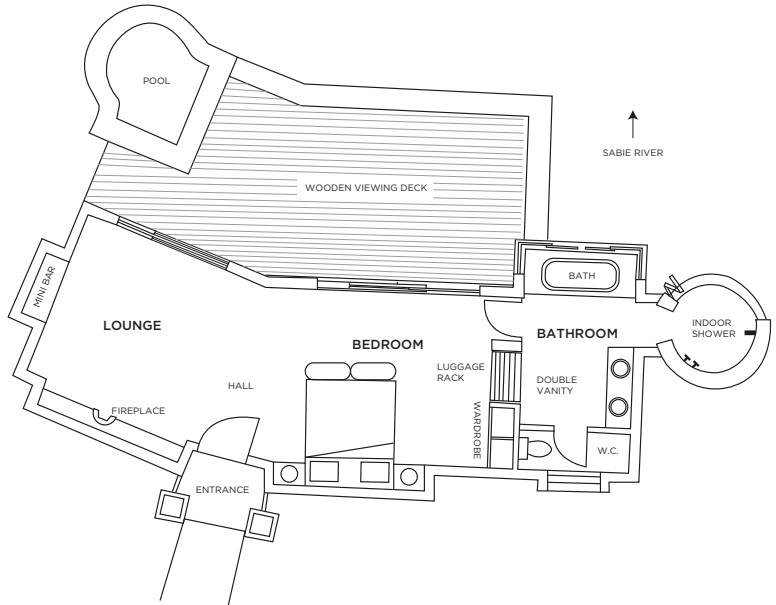


TINGA LODGE LAYOUT



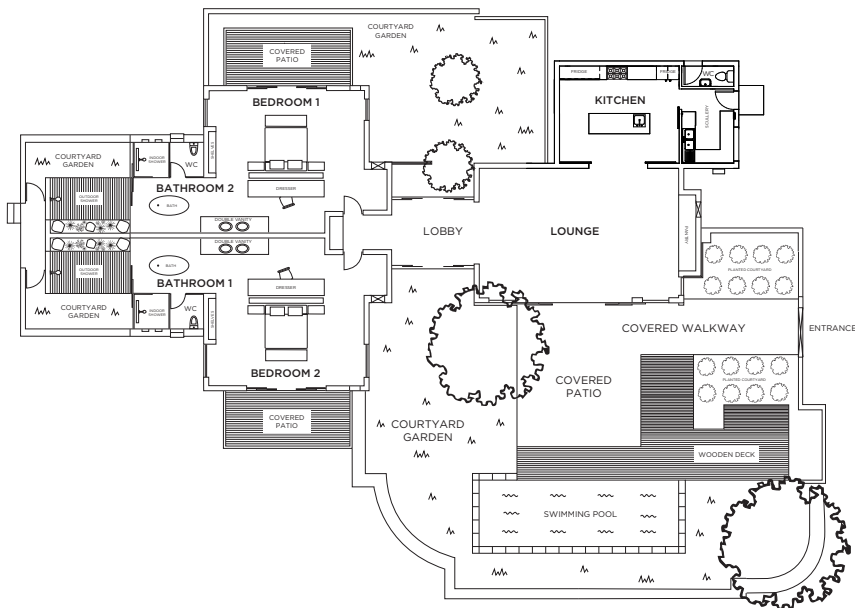
TINGA LODGE SUITE LAYOUT

Interior - 861ft² | 80m²
 Exterior - 484ft² | 45m²
 Total - 1 345ft² | 125m²

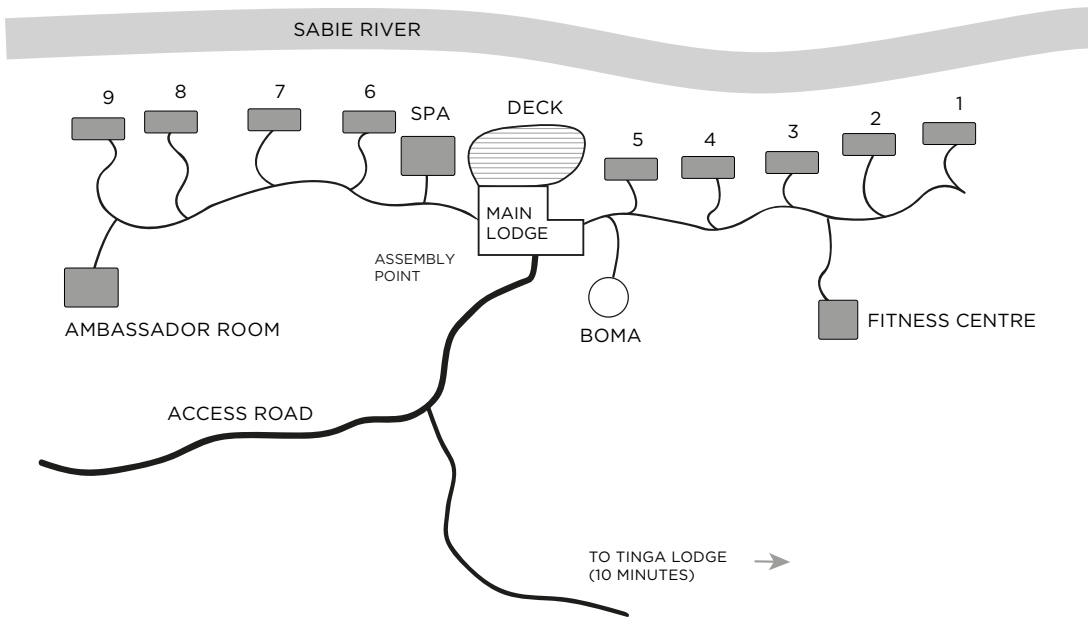


TINGA LODGE TWO-BEDROOM HINKWENU RESIDENCE LAYOUT

Interior - 2691 ft² | 250m²
 Exterior - 1 668ft² | 155m²
 Total - 4 359 ft² | 400m²

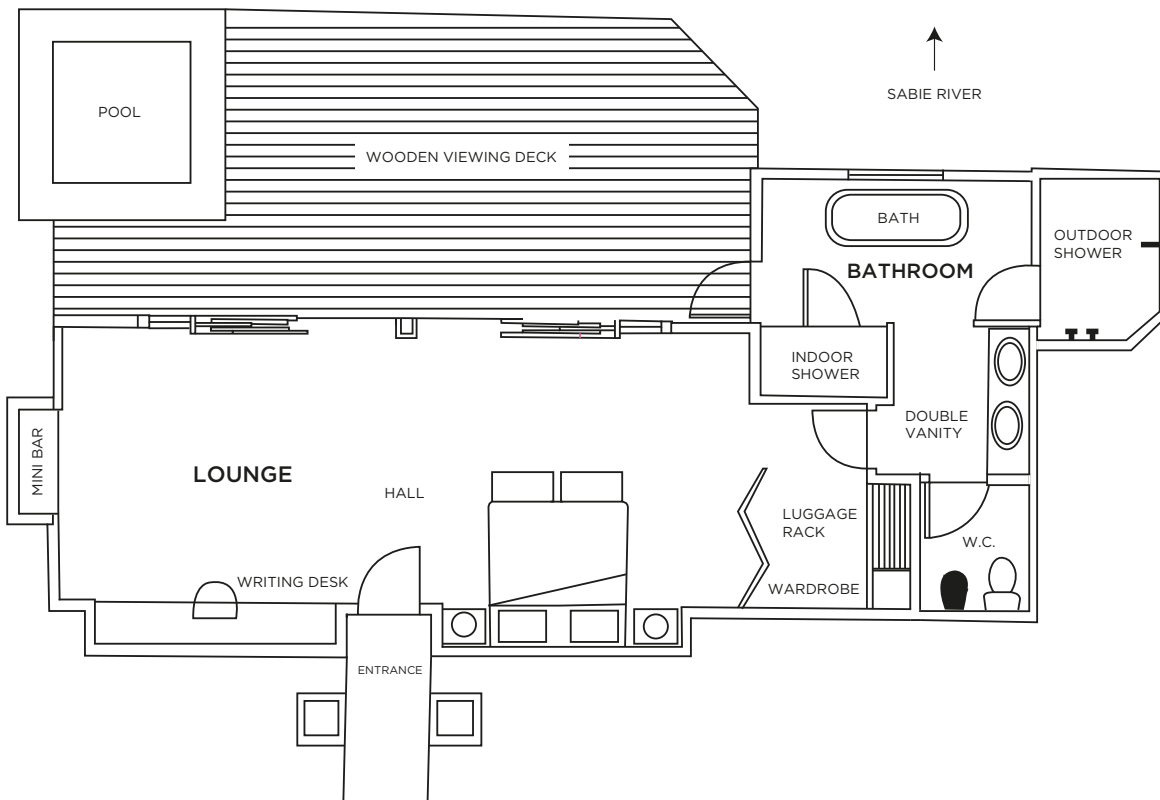


NARINA LODGE LAYOUT



NARINA LODGE SUITE LAYOUT

Interior - 861ft² | 80m²
 Exterior - 484ft² | 45m²
 Total - 1 345ft² | 125m²



REFERENCE TABLE – IVORY LODGE AND RIVER LODGE

| REFERENCE | IVORY LODGE | RIVER LODGE |
|--------------------------------|--|--|
| Suites | 8 Suites 1 Fish Eagle Residence | 18 Rooms: 8 Luxury (L) 6 Superior Luxury (SL) – incl. 2 sets of interleading rooms 4 River Suites (RS) – incl. 1 Family River Suite (FRS) |
| Size of suites | Suites: 1 561ft ² /145m ² Fish Eagle Residence: 3 498ft ² /325m ² | L: 581ft ² /54m ² SL: 840ft ² /78m ² RS: 883ft ² /82m ² FRS: 1 324ft ² /123m ² |
| Guests | 20 | 38 |
| Children | Yes: Suites (>10 years) Fish Eagle Residence (all ages) | Yes (>10 years) |
| Children's rate | 10 to 15 years (50% of adult pps rate if sharing with an adult) | 10 to 15 years (50% of adult pps rate if sharing with an adult) |
| Children on safari | Private game drives (kids of all ages) Twice-daily game drives (>10 years) | Yes (>10 years) |
| Children activities | Yes | Yes |
| Childminding | Yes (additional cost) | Yes (additional cost) |
| Triple rooms | Fish Eagle Residence (x2 rooms) | No |
| Single traveller supplement | Waivered (subject to availability) | Waivered (subject to availability) |
| King bed convertible to ¾ beds | Yes | Yes |
| Treehouses | Chalkley Treehouse and Kingston Treehouse | |
| Central guest pool | No | Yes |
| Private plunge pool | Yes | Yes (River Suites) |
| Air conditioning | Yes | Yes |
| Fireplace | Yes | Yes (guest areas) |
| Room fans | Yes | Yes |
| Mosquito nets | Yes | Yes |
| Outdoor shower | Yes | Yes (Superior Luxury Rooms and River Suites) |
| Indoor showers | Yes | Yes |
| Separate WC | Yes | Yes (Luxury Rooms and River Suites) |
| Free Wi-Fi | Yes (all areas) | Yes (all areas) |
| Satellite television | No | Yes (guest area) |
| In-room telephone | Yes (direct dial) | Yes (direct dial) |
| Mobile coverage | Fair: 40% | Fair: 40% |
| In-room safe | Yes | Yes |
| Personal bar | Yes | Yes |
| Hairdryer | Yes | Yes |
| Laundry service | Yes (included) | Yes (included) |
| Conference facilities | No | Yes |
| Spa | Yes | Yes |
| Fitness Centre | Yes | Yes |
| Suitable for disabled guests | No | Yes (with assistance) |
| Distance between rooms | 20–25m/60–75ft | 0–8m/0–25ft |
| Closest airport | Skukuza Airport (25 minutes away) | Skukuza Airport (25 minutes away) |
| Helipad | Yes (24°58'2.22"S 31°31'30.20"E) | |
| Guests per open safari vehicle | 6 | 6 |
| Private open safari vehicle | Fish Eagle Residence (included) Suites (additional cost, subject to availability) | No |
| Languages of field rangers | English, Afrikaans, Shangaan, Zulu | English, Afrikaans, Shangaan |
| Gratuities recommendation | ZAR750* per room per day Fish Eagle Residence ZAR1500* per day *Specific allocations clarified on request | |
| Kosher dining | Yes (dedicated Kosher kitchen). Booked with prior notice and at an additional cost | Yes (self-supervised). Booked with prior notice and at an additional cost |
| Power | 220V AC | 220V AC |
| Credit cards | Mastercard, Visa, Amex | Mastercard, Visa, Amex |
| Cheques | Not accepted | Not accepted |

REFERENCE TABLE – TINGA LODGE AND NARINA LODGE

| REFERENCE | TINGA LODGE | NARINA LODGE |
|--------------------------------|--|---|
| Suites | 9 Suites 1 Hinkwenu Residence | 9 Suites |
| Size of suites | Suites: 861ft ² /80m ² Hinkwenu Residence: 2 368ft ² /220m ² | 861ft ² /80m ² |
| Guests | 24 | 18 |
| Children | Yes: Suites (>6 years) Hinkwenu Residence (all ages) | Yes (>16 years) |
| Children's rate | 6 to 15 years (50% of adult pps rate if sharing with an adult) | No |
| Children on safari | Private game drives (kids of all ages) Twice-daily game drives (>6 years) | No |
| Children activities | Yes | No |
| Childminding | Yes (additional cost) | No |
| Triple rooms | 2 Suites and Hinkwenu Residence | 2 Suites |
| Single traveller supplement | Waivered (subject to availability) | Waivered (subject to availability) |
| King bed convertible to ¾ beds | Yes | Yes |
| Treehouse | Tinyeleti Treehouse | |
| Central guest pool | Yes | No |
| Private plunge pool | Yes | Yes |
| Air conditioning | Yes | Yes |
| Fireplace | Yes (guest areas) Hinkwenu Residence | Yes (guest areas) |
| Room fans | Yes | Yes |
| Mosquito nets | Yes | Yes |
| Outdoor shower | No | Yes |
| Indoor showers | Yes | Yes |
| Separate WC | Yes | Yes |
| Free Wi-Fi | Yes (all areas) | Yes (all areas) |
| Satellite television | Yes (guest area) | No |
| In-room telephone | Yes (direct dial) | Yes (direct dial) |
| Mobile coverage | Good: 80% | Fair: 40% |
| In-room safe | Yes | Yes |
| Personal bar | Yes | Yes |
| Hairdryer | Yes | Yes |
| Laundry service | Yes (included) | Yes (included) |
| Conference facilities | No | No |
| Spa | Yes | Yes |
| Fitness Centre | Yes | Yes |
| Suitable for disabled guests | Yes (with assistance) | No |
| Distance between rooms | 33–49ft/10–15m | 33–49ft/10–15m |
| Closest airport | Skukuza Airport (5 minutes away) | Skukuza Airport (15 minutes away) |
| Helipad | Yes (24°58'7.64"S 31°35'33.92"E) | |
| Guests per open safari vehicle | 6 | 6 |
| Private open safari vehicle | Hinkwenu Residence (included) Suites (additional cost, subject to availability) | Suites (additional cost, subject to availability) |
| Languages of field rangers | English, Afrikaans, Shangaan, Zulu | English, Afrikaans, Shangaan, Zulu |
| Gratuity recommendation | ZAR750* per room per day Hinkwenu Residence ZAR1500* per day *Specific allocations clarified on request | |
| Power | 220V AC | 220V AC |
| Credit cards | Mastercard, Visa, Amex | Mastercard, Visa, Amex |
| Cheques | Not accepted | Not accepted |

REFERENCE TABLE – TREEHOUSE CIRCUIT

| REFERENCE | CHALKLEY TREEHOUSE | KINGSTON TREEHOUSE | TINYELETI TREEHOUSE |
|-----------------------------|--|--|--|
| Location | Sabi Sand side | Sabi Sand side | Kruger Park side |
| Number of guests | 2 adults and 2 children (10 - 15 years) | 2 adults and 2 children (10 - 15 years) | 2 adults and 2 children (10 - 15 years) |
| Stargazing | Yes, countless | Yes, countless | Yes, countless |
| Shower | Yes | Yes | Yes |
| Vanity | Single | Double | Single |
| Radio comms and cell signal | Yes | Yes | Yes |
| Wi-Fi | You must be joking! | You must be joking! | You must be joking! |
| Safety features | Single door, secure stairway, two-way radio contact | Single door, drawbridge, two-way radio contact | Double safety door, two-way radio contact |
| Season | Year-round (weather dependant) | Year-round | Year-round (weather dependant) |
| View | Onto the open savannah | Out over the treetops | Across to the Sabie River |
| Size in decking | 431ft ² /40m ² | 646ft ² /60m ² | 538ft ² /50m ² |
| Height above ground | 26ft/8m | 33ft/10m | 26ft/8m |
| Dining | Gourmet picnic basket and selected drinks from our beverage list | Gourmet picnic basket and selected drinks from our beverage list | Gourmet picnic basket and selected drinks from our beverage list |