

LODGE FACT SHEET 2025

MORE Family Collection; Marataba and Lodges Pg 1 | Residence; Treehouse; Highlights and Info Pg2
Architectural Layouts Pg3 | Reference Tables Pg6

Marataba Safari Lodge & Marataba Mountain Lodge | Tel: +27 (0)14 779 0018
MORE Family Collection – Head Office/Reservations | Tel: +27 (0)11 880 9992 | Email: res@more.co.za
www.more.co.za

MORE Family Collection owns and manages a collection of luxury safari lodges, boutique hotels, and exclusive-use residences in South Africa offering seamless itineraries between our properties. Led by custodian and CEO Robert More, ours is a fourth-generation family business – our origin dates to 1933 when our great grandfather Guy Aubrey Chalkley purchased the land that Lion Sands Game Reserve was later established on. We now have four luxury lodges at Lion Sands.

Our footprint is in four unique safari reserves – Sabi Sand, Kruger, Thornybush, and Marakele, – and our hotel in the vicinity of one Natural Wonders of the World, Table Mountain. Our properties include Lion Sands Game Reserve (Mpumalanga), Marataba Game Lodges and Monwana Game Lodge (Mpumalanga), Cape Cadogan Boutique Hotel (Western Cape). We are committed to protecting the environment, community development, sustainability principles, and delivering on our purpose of creating life-enriching experiences for our guests.

About Marataba Game Lodges

Marataba is a privately managed section of the malaria-free Marakele National Park. The park is a 'place of sanctuary', as its Tswana name suggests, conserving 67 000ha (165 560ac) of the Limpopo Waterberg's biodiversity, as well as Iron Age sites of great historical significance. The game here is impressive in number and diversity due to Marataba's location in a transition zone between the dry western and the wetter eastern regions of South Africa. Its wildlife includes the Big Five and abundant bird species, with the largest colony of endangered Cape vultures (including 800 breeding pairs) in the world to be found here. Rare plant species of yellowwood and cedar trees, ancient cycads, and fern trees flourish here. Marataba is also malaria free.

Enjoy game drives with our professional field guides, bush walks, morning and sunset water safaris, or a night under the stars in Thabametsi Treehouse. Bush dinners and boma dinners are filled with conversation of all the adventure of a safari.

Marataba is a conservation success story with a healthy rhino population. As an additional experience, from April to September, guests have the opportunity to participate in a rhino intervention alongside vets. This may include supporting fitting tracking collars, ear-notching, collecting blood and tissue samples, and micro-chipping of horns.

About the Lodges

Marataba Safari Lodge is for the *active family safari*. A place in the mountains to unwind or find adventure. The 15 Luxury Tents (including four Family Luxury Tents) bring you closer to nature without having to rough it. The stone and canvas abodes each have a king-sized bed, en-suite, outdoor shower, and shaded viewing deck, while the Family Luxury Tents give children their own bedroom and bathroom. A guest pool is located next to the main lodge area. Between the hours spent on safari, guests can relax at the pool, enjoy an in room spa treatment, or simply choose to take it all in.

As of 1 June 2025, we will have expanded our Mack & Madi Kids' Adventure Safari Club offering at Safari Lodge. It will offer a wide variety of activities on site with a dedicated coordinator and an enhanced Eco-Garden play area. There's a jungle gym, paddling pond, haybale archery, toys and games, arts and crafts, movies, beanbags and blankets, and a yard in which to run wild. On arrival children aged 12 and younger are given a Mack & Madi branded peak cap and backpack. Family game drives for the young ones include bush orientation, basic bush survival course, animal 'spoor' identification and mould making, identifying the stars from the eco garden, and more. Lots of fun for all. From 1 June, we will also be offering family safari drives for kids of all ages. Family safari drives are limited to a total of eight people per vehicle (irrespective of age).

Marataba Mountain Lodge offers seekers a *soulful safari adventure*, a place to balance alone time and meaningful connections with others who share this approach to life. This remote retreat overlooks the breath-taking Waterfall Valley, with wide-angle vistas of the Waterberg escarpment. Fully solar powered, five private newly expanded Luxury Rooms blend into the environment, and offer a king-sized bed, fireplace, en-suite rain shower, and shaded viewing deck. On hotter days, guests can enjoy the guest pool at the main lodge. Our improved wellness experience offers relaxing treatments and is the perfect filler between safari adventures.

About Marataba Residence

Marataba Residence features four separate Luxury Tents spread out along the edge of the Matlabas River yet connected by a central common area. This unique layout comfortably accommodates eight adults and two children (all ages are welcome). The Residence's main area includes a fully equipped interactive kitchen, lounge, dining area, welcoming fireplace, a boma facility, and a pool. There is a dedicated hospitality team including a residence butler, chef, and a field guide and private safari vehicle for a personalised safari experience.

About Marataba Treehouse

A remote, luxury treehouse positioned between mountain and sky awaits at Marataba Safari Lodge. Experience the African bush and fall asleep under the stars at our **Thabametsi Treehouse**. Solar-powered and built over two levels, Thabametsi features an enclosed shower room, and bedroom, lounge and viewing decks – presenting the Waterberg and Marakele plains in all their wild expanse. Guests arrive at sunset to sundowners followed by a picnic dinner. Spend the dusk hours watching animals wander past (at a safe distance) and fall asleep counting shooting stars. A field guide is always a radio call away. The Treehouse Experience is booked in conjunction with accommodation at the lodge, with the room available for returning to at any point.

Highlights

- Marakele National Park (Setswana for place of sanctuary), it is unlike anything we have ever seen – the Waterberg mountain range is a spectacular backdrop to this iconic safari experience
- The lodges offer experiences designed to get guests closer to nature and the animals, walking safaris and Miss Mara Water Safaris, as well as traditional open safari vehicle game drives
- Marataba Residence for more personalised family stays
- Marataba has the Thabametsi Treehouse experience for a night out in Africa guests will never forget
- Unique opportunity to participate in a rhino conservation experience with a veterinary team that may include fitting tracking collars, ear-notching, collecting blood and tissue samples, and micro-chipping of horns. (April - September)
- This incredibly large concession has a low density of safari vehicles for a more exclusive experience
- Wildlife diversity includes the Big Five with impressive black rhino sightings, and opportunities to see the rare brown hyena and aardwolf, as well as pangolin
- Exceptional, FGASA-accredited MORE Field Guides
- Only six people per safari vehicle (family safaris at Safari Lodge are eight)
- Family safaris include under six years old and are done after the morning game drive
- Two distinct lodges that suit guest's individual preferences whether travelling as a family or couple
- All dietary needs are accommodated - Vegan, Vegetarian, Halaal (7 to 10 days notice required), Kosher catering (advance notice and at additional cost)
- Mack & Madi Kids' Adventure Safari Club at Safari Lodge offers a wide variety of activities on site that keep children entertained and encourages them to discover, learn, create, and express themselves
- Creative Lab is for professional and novice wildlife photographers - our photographic specialist helps transform photos into canvas artworks for the ultimate keepsake
- Voted amongst the best in the Condé Nast Traveller Readers' Choice Awards and recognised in the Travel & Leisure's Top Hotels in the World!
- Daily flights from Johannesburg and only a four-hour road transfer distance from Johannesburg
- Seamless itineraries can be arranged between the MORE Family Collection properties

Location

Marataba: is a 23 000ha (56 834ac) privately-managed section of the Marakele National Park, in South Africa's Limpopo province.

The park falls within the UNESCO recognised Waterberg Biosphere – the only savannah biosphere in the world!

GPS co-ordinates: follow 24°59'14"S | 27°39'83"E to Thabazimbi, then 24°33'13"S | 27°53'60"E on to Marataba.

Weather

The average maximum temperatures range from 21°C/70°F in July to 35°C/95°F in January, with the lowest average minimum occurring in July at 3°C/38°F • The region is semi-arid, with an average annual rainfall of 500mm (20in), most of which occurs during the summer months (December – February) • Rain is usually in the form of thundershowers, where a downpour is experienced, very seldom lasting longer than a few hours

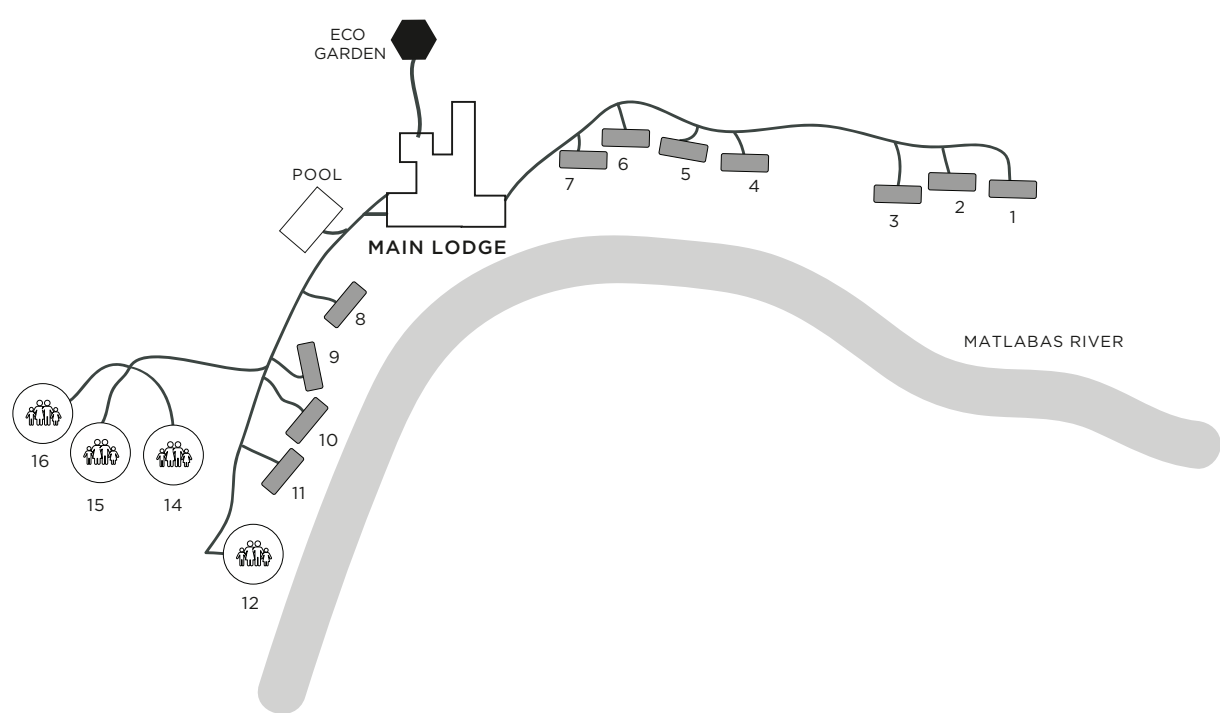
Best Time to Travel

A year-round safari destination • The animals in Marakele National Park are non-migratory, and variation in the safari experience is season rather than location related • The best period for birdwatching is from October to April

Health Info: Malaria

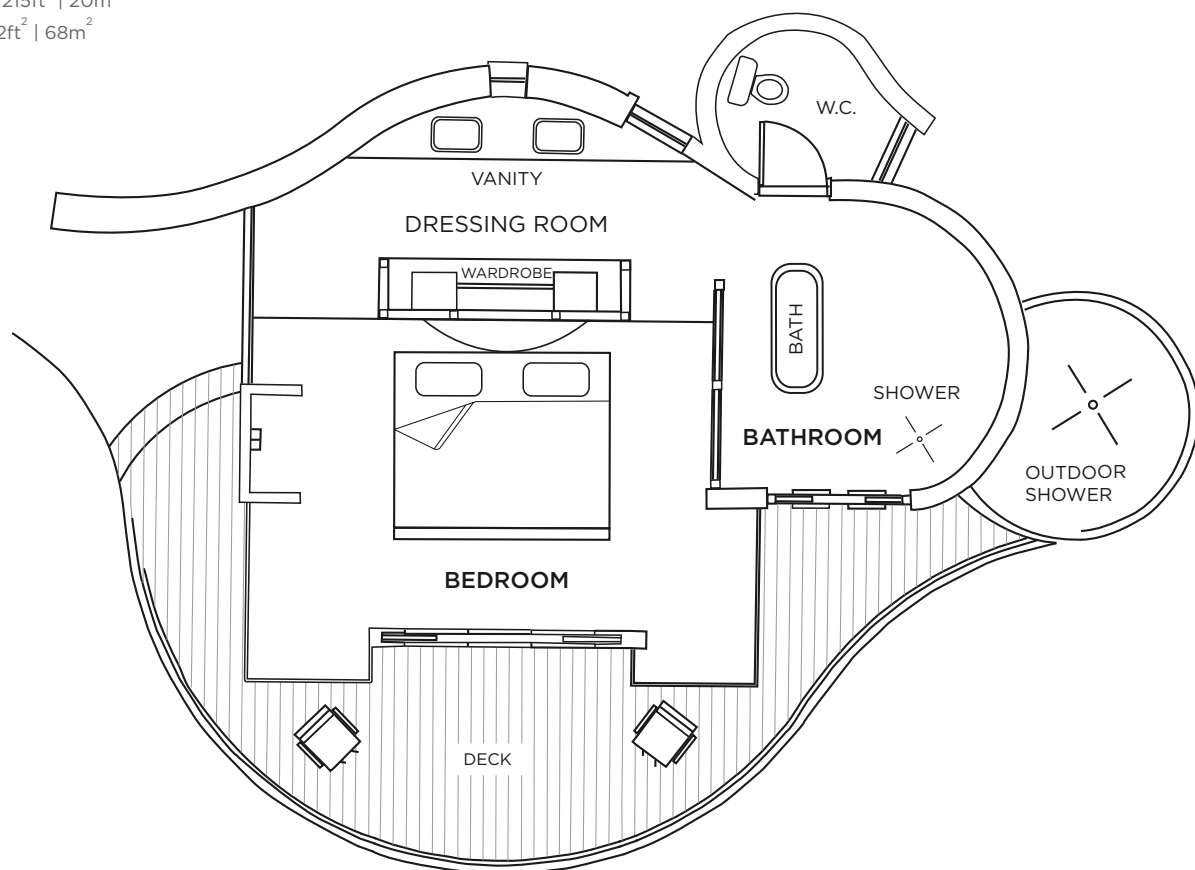
Marataba is situated in a region of South Africa that is not inhabited by the malaria-carrying mosquito (Anopheles) and is therefore classified MALARIA FREE.

Marataba Safari Lodge Layout



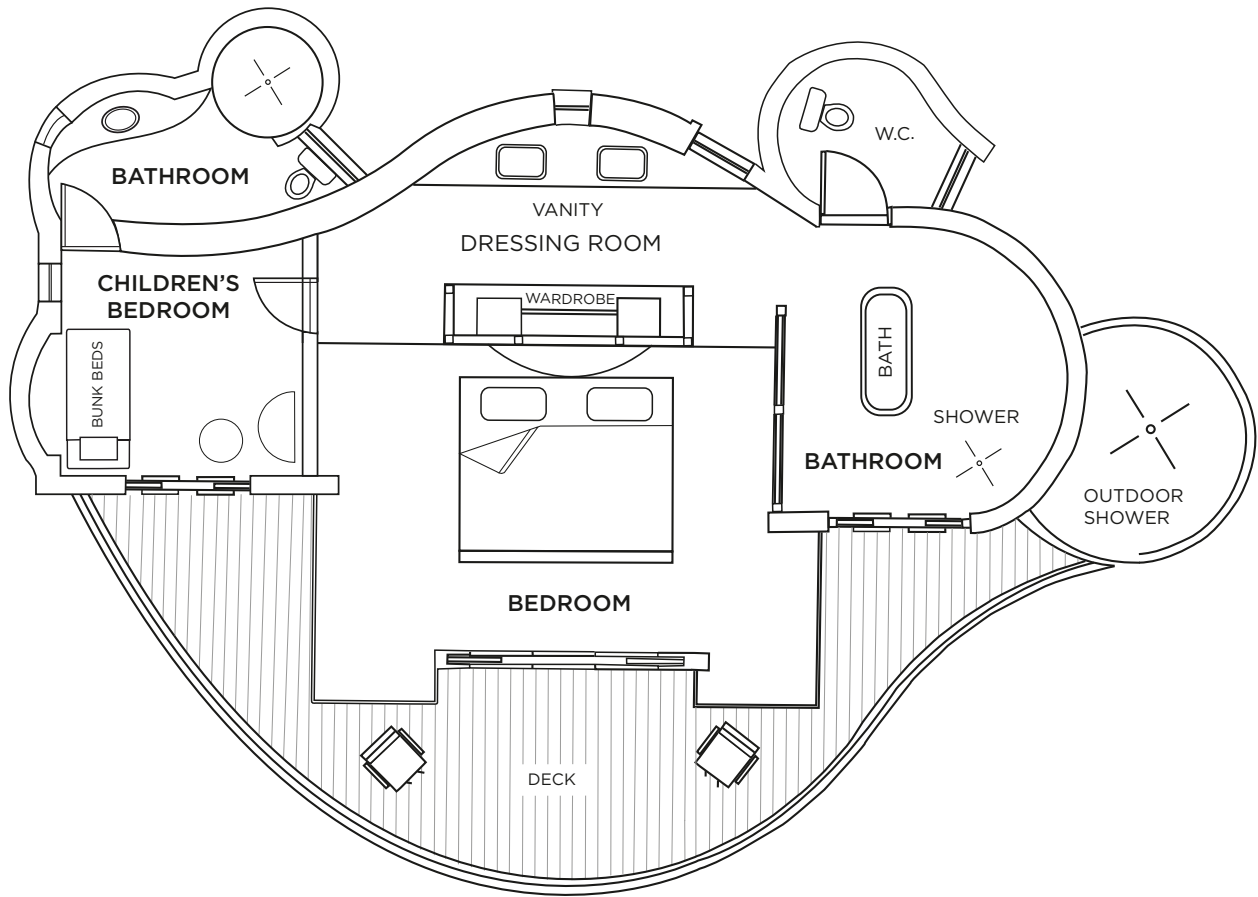
Marataba Safari Lodge
Luxury Tent Layout

Interior - 517ft² | 48m²
Exterior - 215ft² | 20m²
Total - 732ft² | 68m²

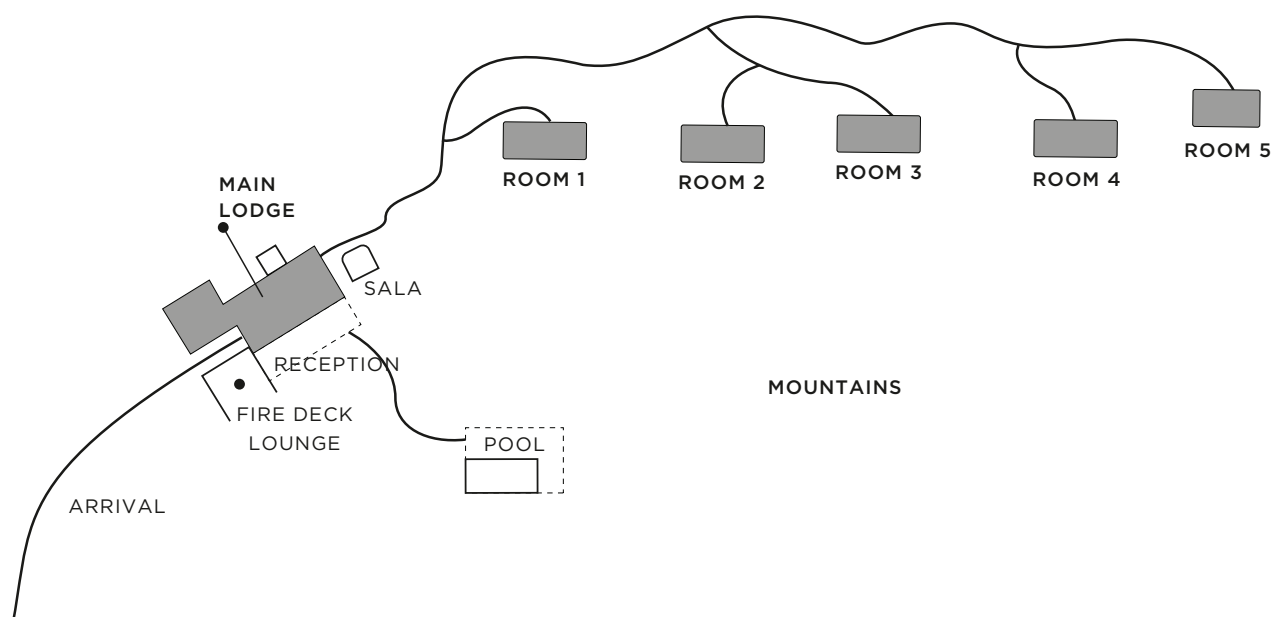


Marataba Safari Lodge
Luxury Family Tent Layout

Interior - 732ft² | 68m²
Exterior - 215ft² | 20m²
Total - 947ft² | 88m²

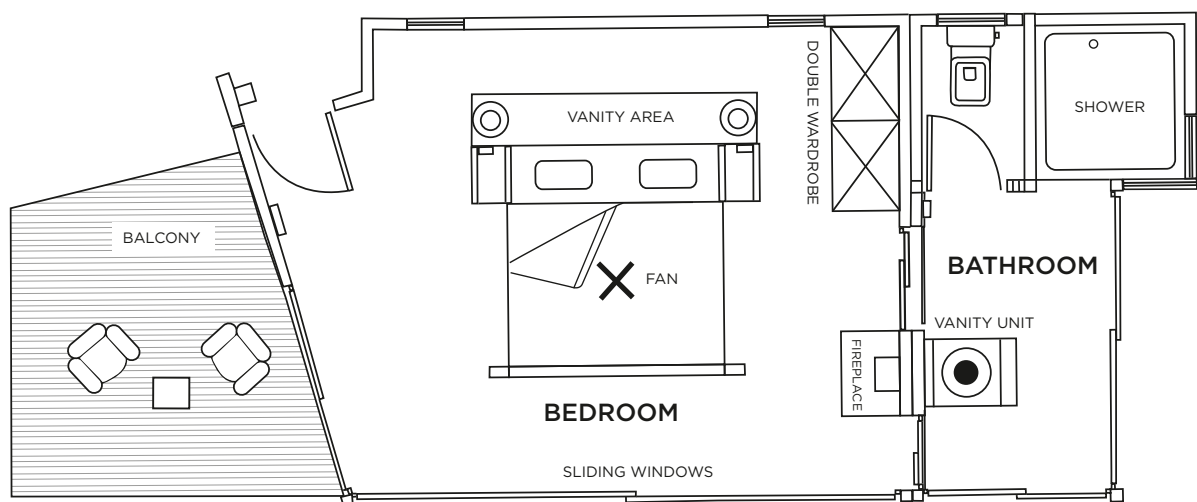


Marataba Mountain Lodge Layout

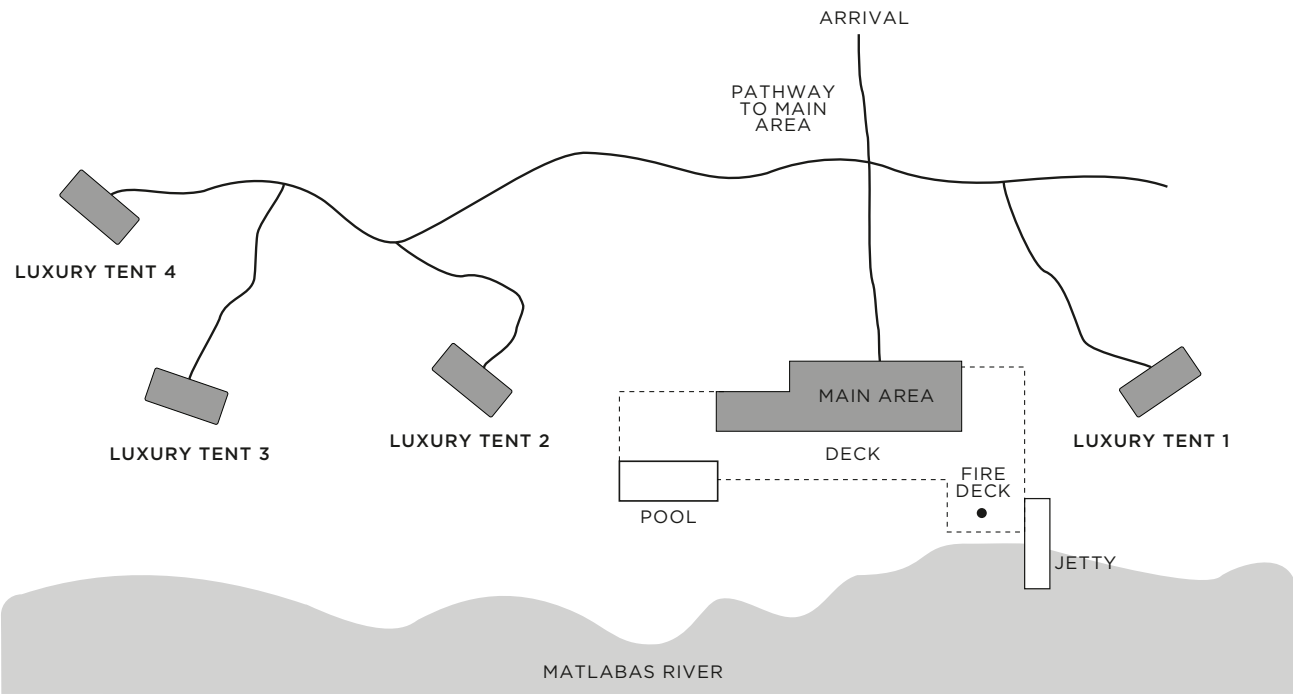


Marataba Mountain Lodge
Luxury Room Layout

Interior - 388ft² | 36m²
Exterior - 43ft² | 4m²
Total - 431ft² | 40m²

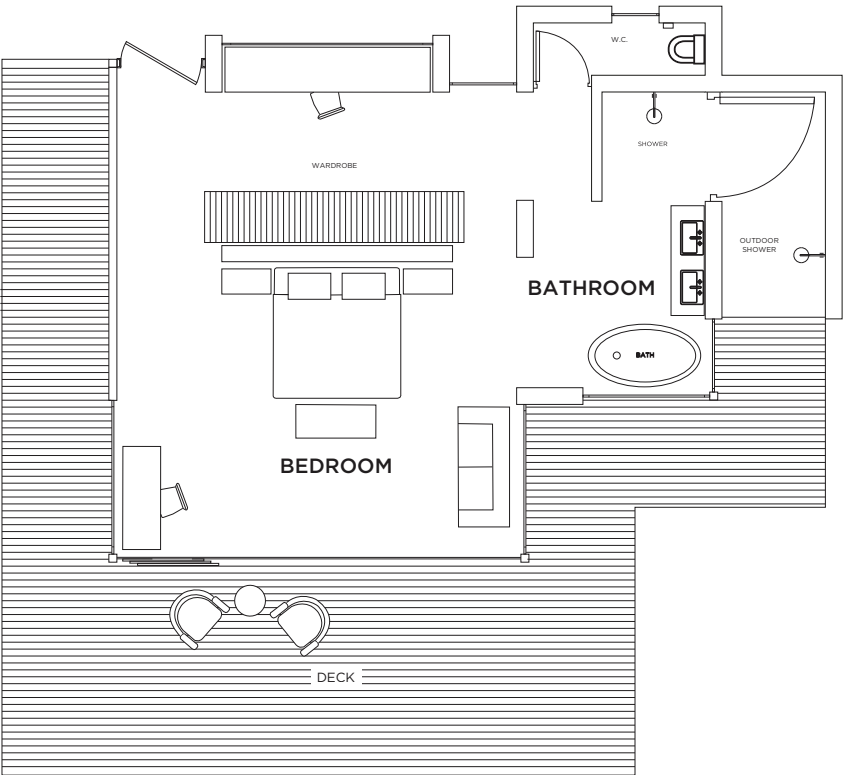


Marataba Residence Layout



Marataba Residence
Luxury Tent Layout

Interior - 495ft² | 46m²
Exterior - 538ft² | 50m²
Total - 1 033ft² | 96m²



Reference Table – Marataba Safari Lodge, Marataba Mountain Lodge, Marataba Residence

Reference	Marataba Safari Lodge	Marataba Mountain Lodge	Marataba Residence
Luxury Tents/Rooms	11 Luxury Tents 4 Family Luxury Tents	5 Luxury Rooms	4 Separate Luxury Tents
Size of tents/rooms	Luxury Tent: 517ft ² /48m ² Family Luxury Tents: 223ft ² /68m ²	118ft ² /36m ²	1 033ft ² / 96m ² (en-suite bedroom and deck)
Guests	38	10	8 adults and 2 children
Children	Yes (all ages)	No (>16 years)	Yes (all ages)
Children's rate	<5 years (free) 6 to 15 years (50% of adult rate)	No	N/A
Children on safari	Family game drives (3 to 5 years) after morning game drive. Private game drives (on request, availability, and additional cost) Twice-daily game drive (>6 years)	Yes (>16 years)	Yes
Children's activities	Yes	No	Yes
Childminding	Yes (additional cost)	N/A	Yes (additional cost)
Single traveller supplement	Yes (50% supplement)	Yes (50% supplement)	N/A
King bed convertible to ¾ beds	Yes (x7 tents)	Yes (x2 rooms)	Yes, on request
Treehouse	Thabametsi Treehouse		
Central guest pool	Yes	Yes	Yes
Private plunge pool	No	No	No
Air conditioning	Yes	Yes	Yes
Fireplace	Yes (guest lounge)	Yes	Yes (Residence lounge)
Room fans	No	Yes	No
Mosquito nets	No	No	Yes
Outdoor shower	Yes	Yes (guest pool area rain shower)	Yes
Indoor showers	Yes	Yes (with a view)	Yes
Separate WC	Yes	Yes	Yes
Free Wi-Fi	Yes (all areas)	Yes (all areas)	Yes (all areas)
Satellite television	Yes (guest area)	No	No
In-room telephone	Yes (direct dial)	Yes (direct dial)	No
Mobile coverage	Fair: 40%	None	Yes
In-room safe	Yes	Yes	Yes
Personal bar	Yes	Yes	Yes
Hairdryer	Yes	Yes	Yes
Laundry	Yes (additional cost)	Yes (additional cost)	Yes (additional cost)
Conference facilities	Yes	Yes (when booked exclusively)	No
Spa	In-room treatments (additional cost)	Spa sala (additional cost)	In-room treatments (additional cost)
Fitness Centre	No	No	No
Suitable for disabled guests	Yes (x1 tent)	No	No
Distance between rooms	66ft/20m	49ft/15m	98ft/30m
Airstrip	Yes, Thabazimbi Airstrip (1 hour away) 24°14'26.82"S 27°29'27.78"E	Yes, Thabazimbi Airstrip (1h 30min away) 24°14'26.82"S 27°29'27.78"E	Yes, Thabazimbi Airstrip (40 min away) 24°14'26.82"S 27°29'27.78"E
Helipad	Yes (24°20'49.69"S 27°34'10.61"E)		
Guests per open safari vehicle	6	6	8
Private open safari vehicle	Yes (subject to availability, at an additional cost)	Yes (subject to availability, at an additional cost)	Yes (subject to availability, at an additional cost)
Languages of field rangers / guides	English, Afrikaans	English, Afrikaans	English, Afrikaans
Gratuities recommendation	ZAR600* per room per day *Specific allocations clarified on request	ZAR600* per room per day *Specific allocations clarified on request	ZAR1 500* per Residence per day *Specific allocations clarified on request
Kosher dining	Yes (with prior notice, at an additional cost)	No	Yes (with prior notice, at an additional cost)
Power	220V AC	220V AC	220V AC
Credit cards	Mastercard, Visa, Amex	Mastercard, Visa, Amex	Mastercard, Visa, Amex
Cheques	Not accepted	Not accepted	Not accepted

Reference Table - Thabametsi Treehouse

Reference			
Number of guests	2 adults and 2 children (6 to 15 years)	Wi-Fi	You must be joking!
Stargazing	Yes, countless	Safety features	Single door, stairs, radio contact
Bathroom	2 hot-water showers and a double vanity	Season	Year-round (weather dependent)
Bedroom	Super king-sized bed and twin pull-out beds	View	The Waterberg and plains of the Marakele National Park
Living areas	Lounge and furnished decks	Size in decking	688ft ² /64m ²
Solar powered	1.2kW solar-power system for lights, geyser, and USB charge points in the bed's headboard for guests' devices	Height above ground	9ft/3m
Radio comms and cell signal	Yes	Dining	Gourmet picnic basket and selected drinks from our beverage list