

CIRCUIT PROTECTION CONSUMER UNITS



- Consumer Units
- Garage Units
- Shower Units
- EV Units
- Bidirectional MCB
- Bidirectional RCD
- Bidirectional RCBO
- Bidirectional AFDD
- Surge & Lighting Arrestors
- Accessories



CONTENTS

MAIN SWITCH CONSUMER UNITS

| | |
|---|---|
| Surge Protection Consumer Unit | 4 |
| Isolator Incomer Switch Consumer Unit | 4 |
| Isolator Incomer Switch Double Deck Consumer Unit | 4 |
| RCD Consumer Unit | 4 |

GARAGE & SHOWER UNITS

| | |
|----------------------------|---|
| Garage Consumer Unit | 5 |
| Shower Consumer Unit | 5 |

EV DISTRIBUTION BOARDS

| | |
|------------------------------------|---|
| EV Charger Distribution Unit | 5 |
| Fused Switch | 5 |

ENCLOSURES

| | |
|------------------------|---|
| Empty Enclosures | 6 |
|------------------------|---|

CONSUMER UNIT ACCESSORIES

| | |
|---------------------------|---|
| Copper Pin Busbar | 6 |
| Connecting Bar | 6 |
| Blank Modules | 6 |
| Surge Arrester Kits | 7 |
| Time Clocks | 7 |
| Energy Meters | 7 |
| Modular Contactors | 7 |
| Lockout Kits | 7 |

CIRCUIT PROTECTION

| | |
|-------------------------------------|----|
| Isolator Switch | 8 |
| RCD | 8 |
| RCD Time Delay | 8 |
| MCB | 8 |
| Compact RCBO | 9 |
| Compact RCBO Switched Neutral | 9 |
| RCBO | 10 |
| Double Pole 2 Module RCBO | 11 |
| AFDD | 12 |

SURGE PROTECTION DEVICES

| | |
|--|----|
| Surge Arresters T2 PV Solar Systems | 13 |
| Lightning Surge Arresters T1+T2 PV Solar Systems | 13 |
| Surge Arrester Devices Selection Chart | 14 |

| | |
|-------------------------|----|
| DIMENSIONS | 15 |
|-------------------------|----|



INTRODUCTION

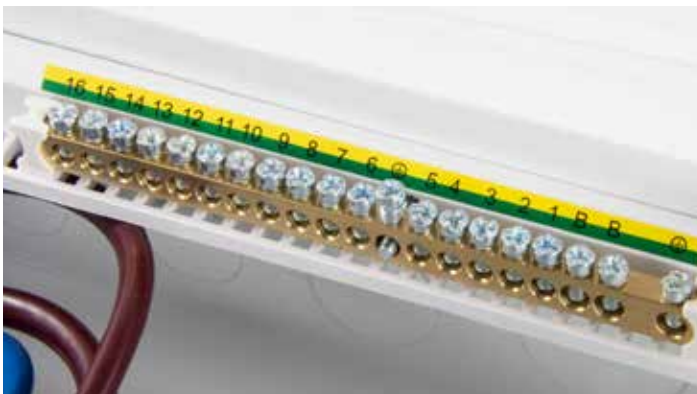
Welcome to our range of metal clad consumer units and circuit protection devices, these are manufactured to comply with current standards and are independently tested, so with MCG's 40 years of experience you know you are in safe hands when choosing our circuit protection products.

Our Product Features

A range of metal clad consumer units with the following features:

- Fully enclosed metal construction body with drop-down metal cover
- Ferruled cable ends for secure connection
- Ferruled cable ends for secure connection
- Raised keyholes for secure easy installation
- Multiple circular cable entry knockouts top [M25, M32 and M40] plus rear aperture/rounded cable entries
- Finished in white polyester powder coating to RAL90
- IP20 protection Unless stated otherwise
- Retained lid screws
- BS EN 61439-3

All circuit protection devices are manufactured in accordance with current standards and are independently tested.



Numbered Neutral and Earth Terminals



Ferruled cable ends, offer more secure connections



Full Metal DIN Rails



Captive screws for front cover



Multiple circular cable entry knock-outs

MAIN SWITCH CONSUMER UNITS

SURGE PROTECTION CONSUMER UNIT

- Complete with fully fitted and pre-wired 2 pole 100A incoming Isolator
- 1 x Type 2 SPD and 1 x 32A MCB10
- SPD is suitable for TN-C-S, TN-S and TT earthing system
- SPD is compliant to 18th Edition Wiring Regulations [BS 7671:2018 Surge Protection]

| Code | Ref No | Description | Usable Ways |
|-----------|------------|----------------------------------|-------------|
| 2711-1355 | MMSB4SPDM | 100A Incomer - T2 Surge Arrester | 4 |
| 2711-1373 | MMSB6SPDM | 100A Incomer - T2 Surge Arrester | 6 |
| 2711-1379 | MMSB8SPDM | 100A Incomer - T2 Surge Arrester | 8 |
| 2713-0024 | MMSB10SPDM | 100A Incomer - T2 Surge Arrester | 10 |
| 2713-0027 | MMSB12SPDM | 100A Incomer - T2 Surge Arrester | 12 |
| 2713-0030 | MMSB14SPDM | 100A Incomer - T2 Surge Arrester | 14 |
| 2799-8299 | MMSB18SPDM | 100A Incomer - T2 Surge Arrester | 18 |

MCG Industrial Branded SPD



MMSB12SPDM

ISOLATOR INCOMER SWITCH CONSUMER UNIT

- Complete with fully fitted and pre-wired 2 pole 100A incoming isolator

| Code | Ref No | Description | Usable Ways |
|-----------|--------|--------------|-------------|
| 2073-7342 | MMSB2 | 100A Incomer | 2 |
| 2073-7348 | MMSB4 | 100A Incomer | 4 |
| 2073-7366 | MMSB6 | 100A Incomer | 6 |
| 2073-7378 | MMSB8 | 100A Incomer | 8 |
| 2646-0604 | MMSB10 | 100A Incomer | 10 |
| 2073-7333 | MMSB12 | 100A Incomer | 12 |
| 2403-3820 | MMSB14 | 100A Incomer | 14 |
| 2073-7336 | MMSB16 | 100A Incomer | 16 |
| 2073-7339 | MMSB19 | 100A Incomer | 19 |
| 2403-3823 | MMSB20 | 100A Incomer | 20 |



MMSB16

ISOLATOR INCOMER SWITCH DOUBLE DECK CONSUMER UNIT

- Complete with fully fitted and pre-wired 2 pole 100A incoming isolator

| Code | Ref No | Description | Usable Ways |
|-----------|--------|--------------|-------------|
| 2073-7342 | MMSB22 | 125A Incomer | 22 |



RCD CONSUMER UNIT

- Complete with fully fitted and pre-wired 80A 2 pole 30mA Type A RCD

| Code | Ref No | Description | Usable Ways |
|-----------|------------|--------------------|-------------|
| 2711-1304 | MMSB4R80AT | RCD 80A Controlled | 4 |
| 2711-1307 | MMSB6R80AT | RCD 80A Controlled | 6 |



MMSB4R80AT

GARAGE AND SHOWER UNITS

GARAGE CONSUMER UNIT

- Complete with fully fitted and pre-wired 2 pole 63A 30mA Type A RCD
- 1 x 6A MCB B Curve and 1 x 16A MCB B Curve
- IP65 Option Available
- 4 Way Empty Enclosure Option (IP65) - see page 6 for details

| Code | Ref No | Description |
|-----------|----------------|------------------------------|
| 2646-0598 | MGU63AT616 | RCD & MCB Populated +B59IP20 |
| 2646-0601 | MGU63AT616IP65 | RCD & MCB Populated IP65 |



MGU63AT616



MGU63AT616IP65

SHOWER CONSUMER UNIT

- Complete with fully fitted and pre-wired 2 pole 63A 30mA RCD
- 1 x 40A or 50A MCB B Curve

| Code | Ref No | Description |
|-----------|-----------|---------------------------------|
| 2646-0493 | MSU63AT40 | RCD 40A Type A 30mA Shower Unit |
| 2646-0496 | MSU63AT50 | RCD 50A Type A 30mA Shower Unit |



MSU63AT40

EV DISTRIBUTION BOARDS

EV CHARGER DISTRIBUTION UNIT

- Complete fully fitted and pre-wired 2 pole 100A incoming isolator and T2 SDP & 32A MCB
- 32 & 40A RCBO Options (Except EVR)
- SPD is suitable for TN-C-S, TN-S and TT earthing system
- SPD is compliant to 18th Edition Wiring Regulations [BS 7671:2018 Surge Protection]

| Code | Ref No | Description |
|-----------|--------|---|
| 2797-3717 | EVR32 | 100A Isolator, T2 SPD with MCB & B32 RCBO |
| 2797-3720 | EVR40 | 100A Isolator, T2 SPD with MCB & B40 RCBO |
| 2797-3714 | EVR | 100A Isolator, T2 SPD with MCB & B32 MCB |



EVR32

FUSED SWITCH

Enclosed switch with fuseholder complete with multiple or single fuse, metal or plastic body option.

| Code | Ref No | Description |
|-----------|----------|--|
| 2302-9522 | MCGSFML | Metal Switchfuse with 63, 80 & 100A fuses included |
| 2259-4870 | 63SF | Metal Switchfuse with 63A Fuse |
| 2259-4873 | 80SF | Metal Switchfuse with 80A Fuse |
| 2259-4867 | 100SF | Metal Switchfuse with 100A Fuse |
| 2057-1973 | SPFS80A | Plastic Switchfuse Only |
| 2095-3243 | SPFS80AF | Plastic Switchfuse with 63 & 80A Fuse |



MCGSFML



SPFS80A

ENCLOSURES

EMPTY ENCLOSURES

- Fully enclosed metal construction body with drop-down metal cover, DIN rail and earth bar

| Code | Ref No | Description | Usable Ways |
|-------------------|------------|----------------------|-------------|
| Small Body | | | |
| 2191-0537 | ME2S | Empty Enclosure IP20 | 2 |
| 2606-4979 | ME3S | Empty Enclosure IP20 | 3 |
| 2191-0543 | ME4S | Empty Enclosure IP20 | 4 |
| Large Body | | | |
| 2191-0543 | ME2L | Empty Enclosure IP20 | 2 |
| 2606-4976 | ME3L | Empty Enclosure IP20 | 3 |
| 2191-0540 | ME4L | Empty Enclosure IP20 | 4 |
| 2646-0373 | ME6L | Empty Enclosure IP20 | 6 |
| 2646-0376 | ME8L | Empty Enclosure IP20 | 8 |
| 2646-0370 | ME12L | Empty Enclosure IP20 | 12 |
| IP65 | | | |
| 2275-1353 | MGUE4WIP65 | Empty Enclosure IP65 | 4 |



CONSUMER UNIT ACCESSORIES

COPPER PIN BUSBAR

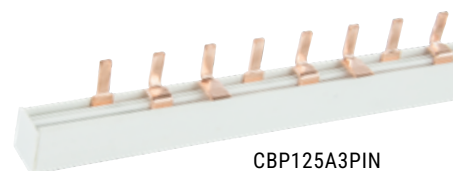
100A rated with end covers, 4-20 Pin options.



11WBB

CONNECTING BAR

Multiple pin copper connecting bar 100-125A 1M length.



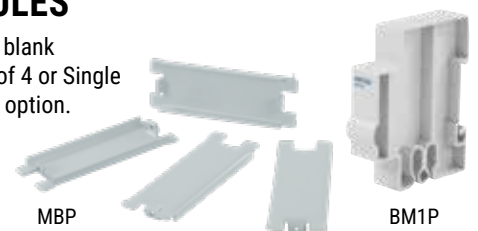
CBP125A3PIN

| Code | Ref No | Description | Pins |
|-----------|--------|------------------------|------|
| 2719-8676 | 4WBB | Copper Pin Busbar 100A | 2 |
| 2646-0349 | 5WBB | Copper Pin Busbar 100A | 3 |
| 2646-0352 | 6WBB | Copper Pin Busbar 100A | 4 |
| 2646-0355 | 7WBB | Copper Pin Busbar 100A | 2 |
| 2646-0358 | 8WBB | Copper Pin Busbar 100A | 3 |
| 2646-0361 | 9WBB | Copper Pin Busbar 100A | 4 |
| 2646-0328 | 10WBB | Copper Pin Busbar 100A | 10 |
| 2646-0331 | 11WBB | Copper Pin Busbar 100A | 11 |
| 2646-0334 | 12WBB | Copper Pin Busbar 100A | 12 |
| 2646-0337 | 13WBB | Copper Pin Busbar 100A | 13 |
| 2646-0340 | 14WBB | Copper Pin Busbar 100A | 14 |
| 2646-0343 | 15WBB | Copper Pin Busbar 100A | 15 |
| 2646-0346 | 16WBB | Copper Pin Busbar 100A | 16 |
| 2799-8305 | 17WBB | Copper Pin Busbar 100A | 17 |
| 2163-3127 | 19WBB | Copper Pin Busbar 100A | 19 |
| 2718-0604 | 20WBB | Copper Pin Busbar 100A | 20 |

| Code | Ref No | Description | Pins |
|-----------|-------------|--------------------------------|------|
| 2760-9355 | CBP100A1PIN | Copper Pin Connecting Bar 100A | 1 |
| 2760-9358 | CBP100A2PIN | Copper Pin Connecting Bar 100A | 2 |
| 2760-9361 | CBP125A3PIN | Copper Pin Connecting Bar 125A | 3 |

BLANK MODULES

Consumer unit 18mm blank modules, metal pack of 4 or Single 18mm module plastic option.



| Code | Ref No | Description |
|-----------|--------|-----------------------------|
| 2195-5240 | MBP | 4 x Blanking Module Metal |
| 2020-1194 | BM1P | 1 x Blanking Module Plastic |

CONSUMER UNIT ACCESSORIES

SURGE ARRESTER KITS

A T2 Surge Arrester, 32A MCB & cable connecting pack. There are two brand options MCG or SPD Co., the SPD Co device is supplied with a 10 Year Manufactures Warranty.

| Code | Ref No | Description |
|-----------|------------|---|
| 2696-8078 | SPD2PACK-M | T2 Surge Arrester Kit MCG |
| 2696-8078 | SPD2PACK-S | T2 Surge Arrester Kit SPD Co. |
| 2737-2202 | MCGSPD1M | T2 Surge Arrester |
| 2433-7003 | SY2-D | T2 Surge Arrester |
| 2764-7161 | SPD PV1000 | T2 Surge Arrester DC - for solar PV installations |



TIME CLOCKS

Din rail mounted time clocks.

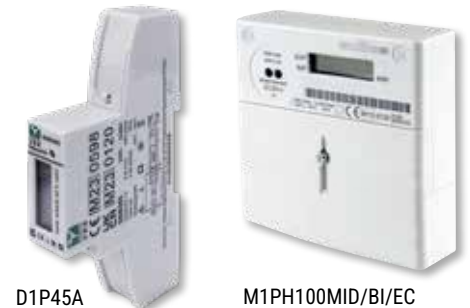
| Code | Ref No | Description |
|-----------|---------|---|
| 2292-7510 | MCGT80C | 16A Single Channel 7 Day 24 Hours Timer |
| 0968-4421 | STM10 | Multi Voltage Multi Function Timer |



ENERGY METERS

Din rail and surface mounted kWh electricity meters.

| Code | Ref No | Description |
|-----------|------------------|--|
| 0702-9838 | D1P45A | 16A Single Channel 7 Day 24 Hours Timer |
| 2027-1052 | M1PHMIDMETER | Single Phase Single Tariff |
| 2772-0991 | M1PH100MID/EC | Single Phase Single Tariff with extended cover |
| 2764-4347 | M1PH100MID/BI/EC | Single Phase Bidirectional with extended cover |
| 2764-4353 | M1PH100MID/NR/EC | Single Phase Bidirectional Net with extended cover |



MODULAR CONTACTORS

Din rail mounted 230V coil switching contactor suitable for heating and lighting applications.



| Code | Ref No | Description |
|-----------|--------|------------------|
| 1469-6029 | MC120 | 2NO 20A 1 Module |
| 1469-4562 | MC225 | 4NO 25A 2 Module |
| 1462-6381 | MC340 | 4NO 40A 3 Module |
| 1462-6384 | MC363 | 4NO 63A 3 Module |

LOCKOUT KITS

No tool & personal lockout kits for domestic electrical contractors.



| Code | Ref No | Description |
|-----------|------------|---|
| 2483-8702 | Loto Kit A | MCB Lockout (no tool) & Brass Padlock |
| 2483-8705 | Loto Kit B | MCB Aluminium Toggle & Universal Lockout, Steel Red Padlock, Tag, Ties & Pouch (Personal Lockout Kit) |
| 2483-8732 | RWPT01 | Non Permanent Market Pen for Lockout Tags |

CIRCUIT PROTECTION

ISOLATOR SWITCH

Features:

- Suitable for isolation to IEC 60947-3
- Insulated DIN rail clips
- Ergonomic hand grip for easy installation
- Red switch handle for rapid identification

| Code | Ref No | Amp | Pole |
|-------------|---------|------|------|
| 100A | | | |
| 2163-3175 | 100A2P1 | 100A | 2 |
| 2163-3178 | 100A3P1 | 100A | 3 |
| 125A | | | |
| 2411-2879 | 125A2P1 | 125A | 2 |
| 2123-6857 | 125A3P1 | 125A | 3 |



125A4PI

RCD

Features:

- Bidirectional
- Insulated din rail clips
- Type A & B options
- 2 & 4 Pole options
- Multiple ma sensitivity options
- Multiple amp over current ratings
- Time delay 'S' options
- Test button
- Fault tripping indication window



63A2P30BT

| Code | Ref No | Type | mA | Time Delay | Amps | Pole | Short Circuit Rating |
|------------------------|-------------|------|-----|------------|------|------|----------------------|
| Type B 30mA | | | | | | | |
| 2577-8734 | 63A2P30BT | B | 30 | - | 63A | 2 | 10kA |
| Type A 2P 30mA | | | | | | | |
| 2579-4520 | 25A2P30AT | A | 30 | - | 25A | 2 | 6kA |
| 2579-4535 | 40A2P30AT | A | 30 | - | 40A | 2 | 6kA |
| 2579-4559 | 63A2P30AT | A | 30 | - | 63A | 2 | 6kA |
| 2579-4574 | 80A2P30AT | A | 30 | - | 80A | 2 | 6kA |
| 2579-4493 | 100A2P30AT | A | 30 | - | 100A | 2 | 6kA |
| Type A 2P 100mA | | | | | | | |
| 2647-6993 | 80A2P100AT | A | 100 | - | 80A | 2 | 6kA |
| 2579-4481 | 100A2P100AT | A | 100 | - | 100A | 2 | 6kA |
| Type A 2P 300mA | | | | | | | |
| 2647-6978 | 63A2P300AT | A | 300 | - | 63A | 2 | 6kA |
| 2579-4589 | 100A2P300AT | A | 300 | - | 100A | 2 | 6kA |

RCD TIME DELAY

Features:

- Bidirectional
- Type 's'
- 200-300MS time delay
- Insulated DIN rail clips
- Test button
- Fault tripping indication window



25A2P100ATD

| Code | Ref No | Type | mA | Time Delay ms | Amps | Pole | Short Circuit Rating |
|-----------------|--------------|------|-----|---------------|------|------|----------------------|
| 2P 100mA | | | | | | | |
| 2647-6939 | 25A2P100ATD | A | 100 | 200 - 300 | 25A | 2 | 6kA |
| 2647-6960 | 40A2P100ATD | A | 100 | 200 - 300 | 40A | 2 | 6kA |
| 2647-6975 | 63A2P100ATD | A | 100 | 200 - 300 | 63A | 2 | 6kA |
| 2647-6996 | 80A2P100ATD | A | 100 | 200 - 300 | 80A | 2 | 6kA |
| 2579-4484 | 100A2P100ATD | A | 100 | 200 - 300 | 100A | 2 | 6kA |
| 2P 300mA | | | | | | | |
| 2579-4490 | 100A2P300ATD | A | 300 | 200 - 300 | 100A | 2 | 6kA |

MCB

Features:

- Bidirectional
- Insulated DIN rail clips
- Ergonomic hand grip
- Multiple trip curve options
- Multiple pole options
- 6kA & 10kA options



6A1PB6

| Code | Ref No | Amps | Pole | Trip Curve | No. of Modules | Short Circuit Rating |
|----------------|---------|------|------|------------|----------------|----------------------|
| B Curve | | | | | | |
| 2123-7115 | 6A1PB6 | 6A | 1P | B | 1 | 6kA |
| 2123-6827 | 10A1PB6 | 10A | 1P | B | 1 | 6kA |
| 2123-6866 | 16A1PB6 | 16A | 1P | B | 1 | 6kA |
| 2123-6908 | 20A1PB6 | 20A | 1P | B | 1 | 6kA |
| 2123-6968 | 32A1PB6 | 32A | 1P | B | 1 | 6kA |
| 2123-7001 | 40A1PB6 | 40A | 1P | B | 1 | 6kA |
| 2123-7046 | 50A1PB6 | 50A | 1P | B | 1 | 6kA |
| 2123-7079 | 63A1PB6 | 63A | 1P | B | 1 | 6kA |
| C Curve | | | | | | |
| 2123-7121 | 6A1PC6 | 6A | 1P | C | 1 | 6kA |
| 2123-6833 | 10A1PC6 | 10A | 1P | C | 1 | 6kA |
| 2123-6872 | 16A1PC6 | 16A | 1P | C | 1 | 6kA |
| 2123-6914 | 20A1PC6 | 20A | 1P | C | 1 | 6kA |
| 2123-6974 | 32A1PC6 | 32A | 1P | C | 1 | 6kA |
| 2123-7007 | 40A1PC6 | 40A | 1P | C | 1 | 6kA |
| 2123-7052 | 50A1PC6 | 50A | 1P | C | 1 | 6kA |
| 2123-7085 | 63A1PC6 | 63A | 1P | C | 1 | 6kA |

CIRCUIT PROTECTION

COMPACT RCBO

Features:

- 1P+N Type A
- 30mA sensitivity 6kA rated
- Single module
- Compact design
- Positive indication
- Test button
- Insulated DIN rail clips
- Fault trip indication window



6A2P30B6MAT

| Code | Ref No | Type | mA | Amps | Pole | Trip Curve | Body Type | Number of Modules | Short Circuit Rating |
|-----------|--------------|------|----|------|------|------------|-----------|-------------------|----------------------|
| 2704-6396 | 6A2P30B6MAT | A | 30 | 6A | 1P+N | B | Compact | 1 | 6kA |
| 2704-6360 | 10A2P30B6MAT | A | 30 | 10A | 1P+N | B | Compact | 1 | 6kA |
| 2704-6366 | 16A2P30B6MAT | A | 30 | 16A | 1P+N | B | Compact | 1 | 6kA |
| 2704-6372 | 20A2P30B6MAT | A | 30 | 20A | 1P+N | B | Compact | 1 | 6kA |
| 2704-6378 | 25A2P30B6MAT | A | 30 | 25A | 1P+N | B | Compact | 1 | 6kA |
| 2704-6384 | 32A2P30B6MAT | A | 30 | 32A | 1P+N | B | Compact | 1 | 6kA |
| 2704-6390 | 40A2P30B6MAT | A | 30 | 40A | 1P+N | B | Compact | 1 | 6kA |

COMPACT RCBO SWITCHED NEUTRAL

Features:

- Bidirectional
- 1P+N Type A
- Switched neutral
- 30mA sensitivity 6kA rated
- Single module
- Compact design
- Positive indication
- Test button
- Insulated DIN rail clips
- Fault trip indication window



32ARSN6B

| Code | Ref No | Type | mA | Amps | Pole | Trip Curve | Body Type | Number of Modules | Short Circuit Rating |
|-----------|----------|------|----|------|---------------------|------------|-----------|-------------------|----------------------|
| 2797-8712 | 6ARSN6B | A | 30 | 6A | 1P+N Switch Neutral | B | Compact | 1 | 6kA |
| 2797-8694 | 10ARSN6B | A | 30 | 10A | 1P+N Switch Neutral | B | Compact | 1 | 6kA |
| 2797-8697 | 16ARSN6B | A | 30 | 16A | 1P+N Switch Neutral | B | Compact | 1 | 6kA |
| 2797-8700 | 20ARSN6B | A | 30 | 20A | 1P+N Switch Neutral | B | Compact | 1 | 6kA |
| 2797-8703 | 25ARSN6B | A | 30 | 25A | 1P+N Switch Neutral | B | Compact | 1 | 6kA |
| 2797-8706 | 32ARSN6B | A | 30 | 32A | 1P+N Switch Neutral | B | Compact | 1 | 6kA |
| 2797-8709 | 40ARSN6B | A | 30 | 40A | 1P+N Switch Neutral | B | Compact | 1 | 6kA |

CIRCUIT PROTECTION

RCBO

Features:

- Insulated DIN rail clips
- Sensitivity 30mA
- Test 'T' operating test button on the front panel
- Fault tripping indicator window
- Complete with 750mm Neutral and Earth cables
- Ergonomic hand grip for easy installation



6A2P30BAT

| Code | Ref No | Type | mA | Amps | Pole | Trip Curve | Body Type | Number of Modules | Short Circuit Rating |
|---------------------|------------|------|----|------|------|------------|-----------|-------------------|----------------------|
| 1P+N B Curve | | | | | | | | | |
| 2646-5629 | 6A2P30BAT | A | 30 | 6A | 1P+N | B | Standard | 1 | 10kA |
| 2646-5587 | 10A2P30BAT | A | 30 | 10A | 1P+N | B | Standard | 1 | 10kA |
| 2646-5593 | 16A2P30BAT | A | 30 | 16A | 1P+N | B | Standard | 1 | 10kA |
| 2646-5599 | 20A2P30BAT | A | 30 | 20A | 1P+N | B | Standard | 1 | 10kA |
| 2646-5611 | 32A2P30BAT | A | 30 | 32A | 1P+N | B | Standard | 1 | 10kA |
| 2646-5617 | 40A2P30BAT | A | 30 | 40A | 1P+N | B | Standard | 1 | 10kA |
| 2646-5623 | 50A2P30BAT | A | 30 | 50A | 1P+N | B | Standard | 1 | 10kA |
| 1P+N C Curve | | | | | | | | | |
| 2646-5632 | 6A2P30CAT | A | 30 | 6A | 1P+N | C | Standard | 1 | 10kA |
| 2646-5590 | 10A2P30CAT | A | 30 | 10A | 1P+N | C | Standard | 1 | 10kA |
| 2646-5596 | 16A2P30CAT | A | 30 | 16A | 1P+N | C | Standard | 1 | 10kA |
| 2646-5602 | 20A2P30CAT | A | 30 | 20A | 1P+N | C | Standard | 1 | 10kA |
| 2646-5614 | 32A2P30CAT | A | 30 | 25A | 1P+N | C | Standard | 1 | 10kA |
| 2646-5620 | 40A2P30CAT | A | 30 | 32A | 1P+N | C | Standard | 1 | 10kA |
| 2646-5626 | 50A2P30CAT | A | 30 | 40A | 1P+N | C | Standard | 1 | 10kA |



CIRCUIT PROTECTION

DOUBLE POLE 2 MODULE RCBO

Features:

- Bidirectional
- For domestic and commercial applications such as EV, heat pumps and solar installations
- Combines residual and overcurrent protection 30mA sensitivity 10kA rated
- No Pole Polarity
- Cable Entry Top or Bottom
- B & C Trip Curve Options
- Double Module 2 Pole protection
- Positive Indication
- Test Button and Trip Indication Window
- Full protection
- 6A to 63A options
- Din rail mounted
- BS EN 61009-1



63ADP30CAT

| Code | Ref No | Type | mA | Amps | Pole | Trip Curve | Body Type | Number of Modules | Short Circuit Rating |
|-------------------|------------|------|----|------|------|------------|-----------|-------------------|----------------------|
| 2P B Curve | | | | | | | | | |
| 2647-6987 | 6ADP30BAT | A | 30 | 6A | 2P | B | Compact | 2 | 10kA |
| 2647-6921 | 10ADP30BAT | A | 30 | 10A | 2P | B | Compact | 2 | 10kA |
| 2647-6927 | 16ADP30BAT | A | 30 | 16A | 2P | B | Compact | 2 | 10kA |
| 2647-6933 | 20ADP30BAT | A | 30 | 20A | 2P | B | Compact | 2 | 10kA |
| 2647-6948 | 25ADP30BAT | A | 30 | 25A | 2P | B | Compact | 2 | 10kA |
| 2647-6954 | 32ADP30BAT | A | 30 | 32A | 2P | B | Compact | 2 | 10kA |
| 2647-6963 | 40ADP30BAT | A | 30 | 40A | 2P | B | Compact | 2 | 10kA |
| 2647-6969 | 50ADP30BAT | A | 30 | 50A | 2P | B | Compact | 2 | 10kA |
| 2647-6981 | 63ADP30BAT | A | 30 | 63A | 2P | B | Compact | 2 | 10kA |
| 2P C Curve | | | | | | | | | |
| 2647-6990 | 6ADP30CAT | A | 30 | 6A | 2P | C | Compact | 2 | 10kA |
| 2647-6924 | 10ADP30CAT | A | 30 | 10A | 2P | C | Compact | 2 | 10kA |
| 2647-6930 | 16ADP30CAT | A | 30 | 16A | 2P | C | Compact | 2 | 10kA |
| 2647-6936 | 20ADP30CAT | A | 30 | 20A | 2P | C | Compact | 2 | 10kA |
| 2647-6951 | 25ADP30CAT | A | 30 | 25A | 2P | C | Compact | 2 | 10kA |
| 2647-6957 | 32ADP30CAT | A | 30 | 32A | 2P | C | Compact | 2 | 10kA |
| 2647-6966 | 40ADP30CAT | A | 30 | 40A | 2P | C | Compact | 2 | 10kA |
| 2647-6972 | 50ADP30CAT | A | 30 | 50A | 2P | C | Compact | 2 | 10kA |
| 2647-6984 | 63ADP30CAT | A | 30 | 63A | 2P | C | Compact | 2 | 10kA |



CIRCUIT PROTECTION

AFDD

Features:

- Bidirectional
- Microprocessor fault detection
- Combinde RCBO [RCD - MCB] & Arc fault protection
- Type A
- 1P+N
- Switched neutral
- B & C trip curve options
- Single module
- Fault indication window



32A2P30BAFDD

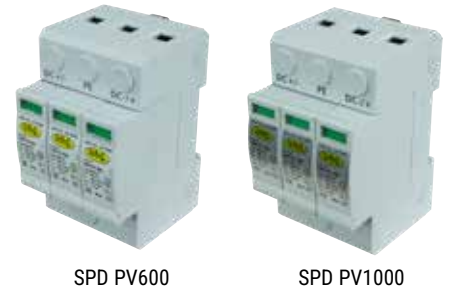
| Code | MCG Ref No | Type | mA | Amps | Pole | Trip Curve | Body Type | Number of Modules | Short Circuit Rating |
|---------------------|--------------|------|----|------|------|------------|-----------|-------------------|----------------------|
| 1P+N B Curve | | | | | | | | | |
| 2577-8644 | 6A2P30BAFDD | A | 30 | 6A | 1P+N | B | Standard | 1 | 6kA |
| 2577-8698 | 10A2P30BAFDD | A | 30 | 10A | 1P+N | B | Standard | 1 | 6kA |
| 2577-8704 | 16A2P30BAFDD | A | 30 | 16A | 1P+N | B | Standard | 1 | 6kA |
| 2577-8710 | 20A2P30BAFDD | A | 30 | 20A | 1P+N | B | Standard | 1 | 10kA |
| 2577-8722 | 32A2P30BAFDD | A | 30 | 32A | 1P+N | B | Standard | 1 | 6kA |
| 2577-8728 | 40A2P30BAFDD | A | 30 | 40A | 1P+N | B | Standard | 1 | 6kA |
| 1P+N C Curve | | | | | | | | | |
| 2577-8647 | 6A2P30CAFDD | A | 30 | 6A | 1P+N | C | Standard | 1 | 6kA |
| 2577-8701 | 10A2P30CAFDD | A | 30 | 10A | 1P+N | C | Standard | 1 | 6kA |
| 2577-8707 | 16A2P30CAFDD | A | 30 | 16A | 1P+N | C | Standard | 1 | 6kA |
| 2577-8713 | 20A2P30CAFDD | A | 30 | 20A | 1P+N | C | Standard | 1 | 6kA |
| 2577-8725 | 32A2P30CAFDD | A | 30 | 32A | 1P+N | C | Standard | 1 | 6kA |
| 2577-8731 | 40A2P30CAFDD | A | 30 | 40A | 1P+N | C | Standard | 1 | 6kA |



SURGE PROTECTION DEVICES

SURGE ARRESTERS T2 PV SOLAR SYSTEMS

| Code | Ref No | Phase | Type | SPD Modules | SPD Poles | Rating |
|----------|------------|-------|------|-------------|-----------|----------|
| 2524-903 | SPD PV600 | DC | T2 | 3 | [+ -] | 600V DC |
| 2524-900 | SPD PV1000 | DC | T2 | 3 | [+ -] | 1000V DC |



SPD PV600

SPD PV1000

LIGHTNING SURGE ARRESTERS T1 + T2 PV SOLAR SYSTEMS

| Code | Ref No | Phase | Type | SPD Modules | SPD Poles | Rating |
|-----------|------------|-------|---------|-------------|-----------|----------|
| 2764-7161 | LSPDPV1000 | DC | T1 + T2 | 3 | [+ -] | 1000V DC |



Please Note:

Other devices are also available for specific protection purposes such as:

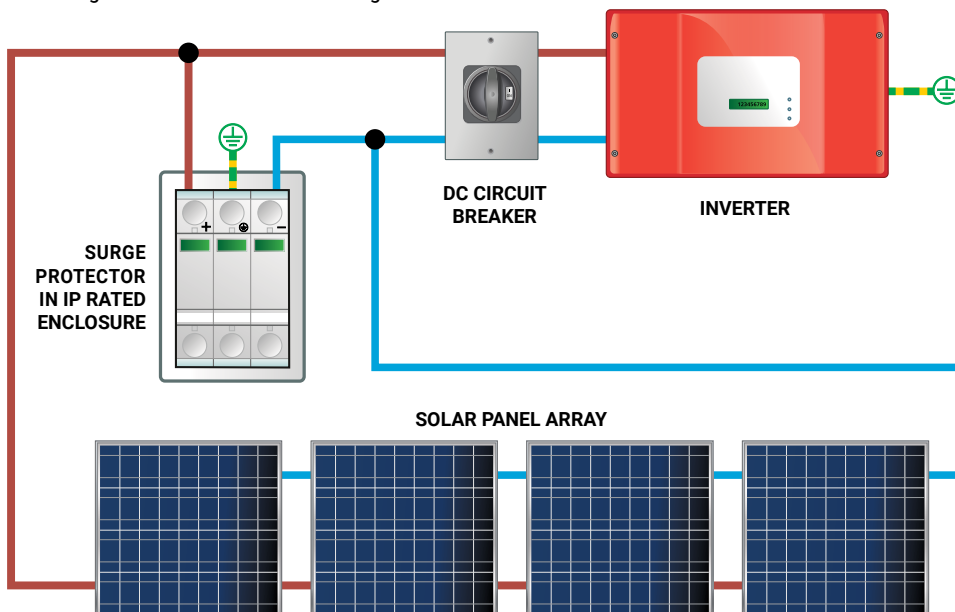
- Telephones/Modems/Fax
- Coaxial
- CCTV
- Satellite
- Fire Alarms

For details on our full range of Surge & Lightning Arresters, scan the QR Code:



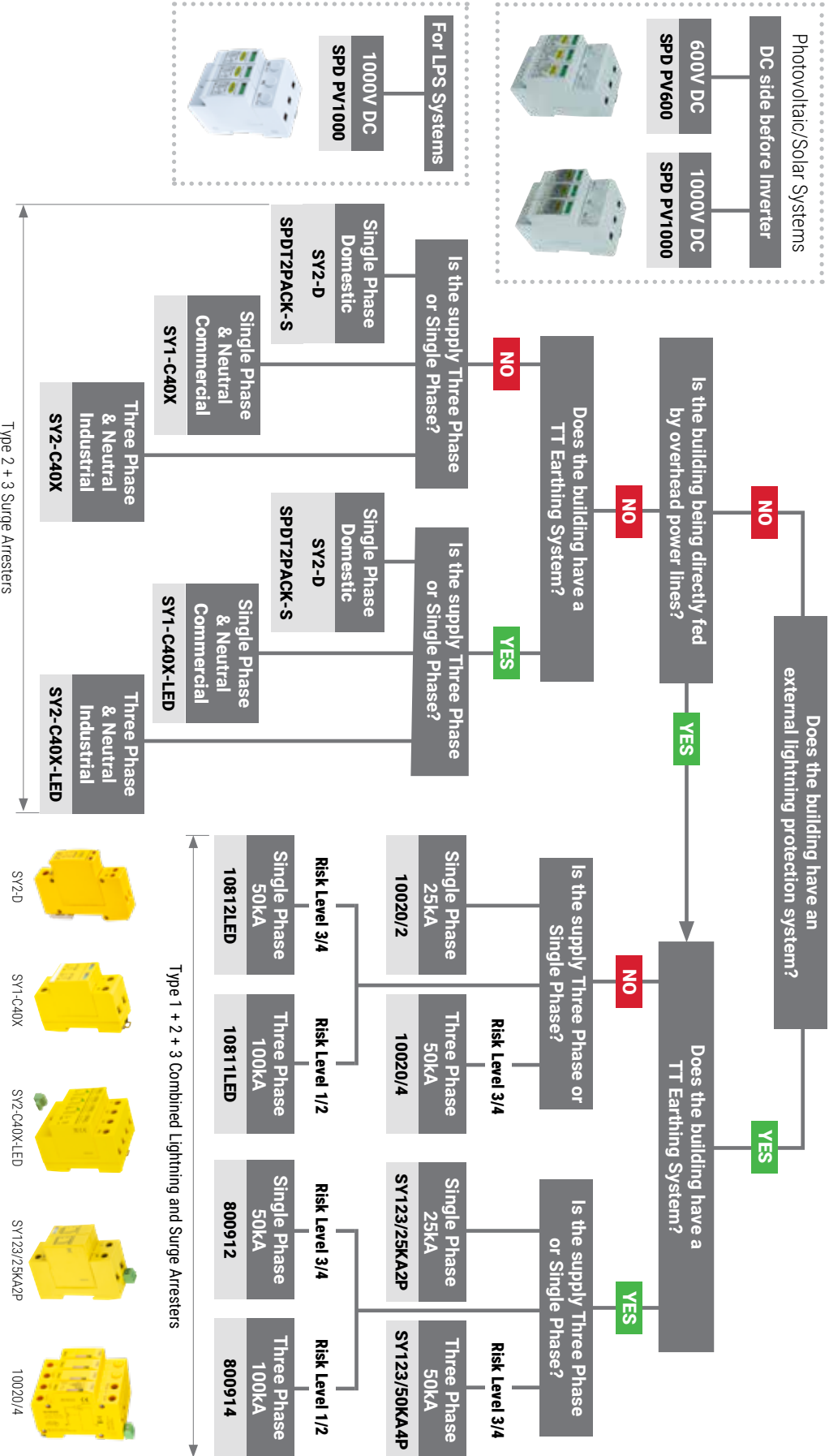
SURGE PROTECTION DEVICE IN A PHOTOVOLTAIC/SOLAR PANEL SYSTEM

For fitting a 600V DC or 1000V DC Surge Protection Device.



SURGE ARRESTER DEVICES SELECTION CHART

WHICH SURGE PROTECTION DEVICE DO I NEED?



USE THIS CHART TO CHOOSE YOUR DEVICE

| | | |
|--|---|---|
| Main Incoming Position - Type 1 | Sub Dist. Board Position - Type 2 | Final Sub Circuit - Type 3 |
| PROTECTION AGAINST DIRECT LIGHTNING CURRENTS [LIGHTNING CURRENT ARRESTER] - 10/350µs | PROTECTION AGAINST INDIRECT LIGHTNING EFFECTS [SURGE ARRESTER] - 8/20µs | PROTECTION AGAINST SWITCHING OVERVOLTAGES [SURGE ARRESTER] - 8/20µs |

Please Note: Devices are also available for specific protection, such as: Telephone/Fax/Modems, Co-axial/BNC/CCTV/Satellite, Power over Ethernet etc., as per BS7671:2018 - Further details on request.

DIMENSIONS

| Code | Ref No | Height [mm] | Width [mm] | Depth [mm] | Page No |
|--|----------------|-------------|------------|------------|---------|
| Surge Protection Consumer Unit | | | | | |
| 2711-1355 | MMSB4SPDM | 235 | 233 | 110 | 4 |
| 2711-1373 | MMSB6SPDM | 235 | 269 | 110 | 4 |
| 2711-1379 | MMSB8SPDM | 235 | 305 | 110 | 4 |
| 2713-0024 | MMSB10SPDM | 235 | 341 | 110 | 4 |
| 2713-0027 | MMSB12SPDM | 235 | 377 | 110 | 4 |
| 2713-0030 | MMSB14SPDM | 235 | 377 | 110 | 4 |
| 2799-8299 | MMSB18SPDM | 235 | 235 | 110 | 4 |
| Main Income Switch Consumer Units | | | | | |
| 2073-7342 | MMSB2 | 235 | 125 | 110 | 4 |
| 2073-7348 | MMSB4 | 235 | 161 | 110 | 4 |
| 2073-7366 | MMSB6 | 235 | 197 | 110 | 4 |
| 2073-7378 | MMSB8 | 235 | 233 | 110 | 4 |
| 2646-0604 | MMSB10 | 235 | 269 | 110 | 4 |
| 2073-7333 | MMSB12 | 235 | 305 | 110 | 4 |
| 2403-3820 | MMSB14 | 235 | 235 | 110 | 4 |
| 2073-7336 | MMSB16 | 235 | 235 | 110 | 4 |
| 2073-7339 | MMSB19 | 235 | 235 | 110 | 4 |
| 2403-3823 | MMSB20 | 235 | 235 | 110 | 4 |
| Main Incomer Switch Double Deck Consumer Unit | | | | | |
| 2073-7342 | MMSB22 | 465 | 465 | 110 | 4 |
| RCD Consumer Unit | | | | | |
| 2711-1304 | MMSB4R80AT | 235 | 161 | 110 | 4 |
| 2711-1307 | MMSB6R80AT | 235 | 197 | 110 | 4 |
| Garage Consumer Unit | | | | | |
| 2646-0598 | MGU63AT616 | 183 | 125 | 110 | 5 |
| 2646-0601 | MGU63AT616IP65 | 220 | 140 | 110 | 5 |
| Shower Consumer Unit | | | | | |
| 2646-0493 | MSU63AT40 | 183 | 125 | 183 | 5 |
| 2646-0496 | MSU63AT50 | 183 | 125 | 183 | 5 |
| EV Charger Distribution Units | | | | | |
| 2797-3714 | EVR | 183 | 143 | 183 | 5 |
| 2797-3717 | EV32 | 183 | 143 | 183 | 5 |
| 2797-3720 | EV40 | 183 | 143 | 183 | 5 |
| Fused Switch | | | | | |
| 2302-9522 | MCGSFML | 225 | 115 | 65 | 5 |
| 2259-4870 | 63SF | 225 | 115 | 65 | 5 |
| 2259-4873 | 80SF | 225 | 115 | 65 | 5 |
| 2259-4867 | 100SF | 225 | 115 | 65 | 5 |
| 2057-1973 | SPFS80A | 80 | 127 | 54 | 5 |
| 2095-3243 | SPFS80AF | 80 | 124 | 54 | 5 |
| Empty Enclosures | | | | | |
| 2191-0537 | ME2S | 183 | 125 | 110 | 6 |
| 2606-4979 | ME3S | 220 | 140 | 110 | 6 |
| 2191-0543 | ME4S | 175 | 110 | 82 | 6 |
| 2191-0543 | ME2L | 225 | 80 | 82 | 6 |
| 2606-4976 | ME3L | 225 | 115 | 82 | 6 |
| 2191-0540 | ME4L | 225 | 115 | 82 | 6 |
| 2646-0373 | ME6L | 235 | 161 | 110 | 6 |
| 2646-0376 | ME8L | 235 | 197 | 110 | 6 |
| 2646-0370 | ME12L | 235 | 269 | 110 | 6 |
| 2275-1353 | MGUE44WIP65 | 220 | 140 | 100 | 6 |

| Code | Ref No | Height [mm] | Width [mm] | Depth [mm] | Page No |
|--------------------------|-------------|-------------|------------|------------|---------|
| Copper Pin Busbar | | | | | |
| 2719-8676 | 4WBB | 28 | 60 | 2 | 6 |
| 2646-0349 | 5WBB | 28 | 78 | 2 | 6 |
| 2646-0352 | 6WBB | 28 | 96 | 2 | 6 |
| 2646-0355 | 7WBB | 28 | 114 | 2 | 6 |
| 2646-0358 | 8WBB | 28 | 132 | 2 | 6 |
| 2646-0361 | 9WBB | 28 | 150 | 2 | 6 |
| 2646-0328 | 10WBB | 28 | 168 | 2 | 6 |
| 2646-0331 | 11WBB | 28 | 186 | 2 | 6 |
| 2646-0334 | 12WBB | 28 | 204 | 2 | 6 |
| 2646-0337 | 13WBB | 28 | 222 | 2 | 6 |
| 2646-0340 | 14WBB | 28 | 240 | 2 | 6 |
| 2646-0343 | 15WBB | 28 | 256 | 2 | 6 |
| 2646-0346 | 16WBB | 28 | 276 | 2 | 6 |
| 2799-8305 | 17WBB | 28 | 294 | 2 | 6 |
| 2163-3127 | 19WBB | 28 | 330 | 2 | 6 |
| 2718-0604 | 20WBB | 28 | 348 | 2 | 6 |
| Connecting Bar | | | | | |
| 2760-9355 | CBP100A1PIN | - | 1000 | - | 6 |
| 2760-9358 | CBP100A2PIN | - | 1000 | - | 6 |
| 2760-9361 | CBP125A3PIN | - | 1000 | - | 6 |
| Blank Modules | | | | | |
| 2195-5240 | MBP | - | 18 | - | 6 |
| 2020-1194 | BM1P | - | 18 | - | 6 |



Unit 1, Railway Court, Ten Pound Walk, Doncaster, South Yorkshire, DN4 5FB
Tel: +44 [0]1302 342 642

mcg.co.uk |  mcg_industrial

MCGCAT01



© MCG 2026 - E&OE Errors and Omissions excepted

MCG1382/03.26