

UiPath® on Tour

AI at Work



# LONDON





# Daniel Dines

Chief Executive Officer and Executive Chairman  
UiPath



**AI at Work**

# The future of business is robotic and agentic





# London 2017





# Evolution of life and the evolution of automation

- Seeing / moving □ Does not require cognitive power
- Routine low value tasks □ Must be super reliable and consume little energy
- Intelligence, decision-making □ the more cognitive, the more power needed



# The future is both robotic *and* agentic

## Robotic

Rules-based,  
requires supervision,  
static behavior

### Left Brain

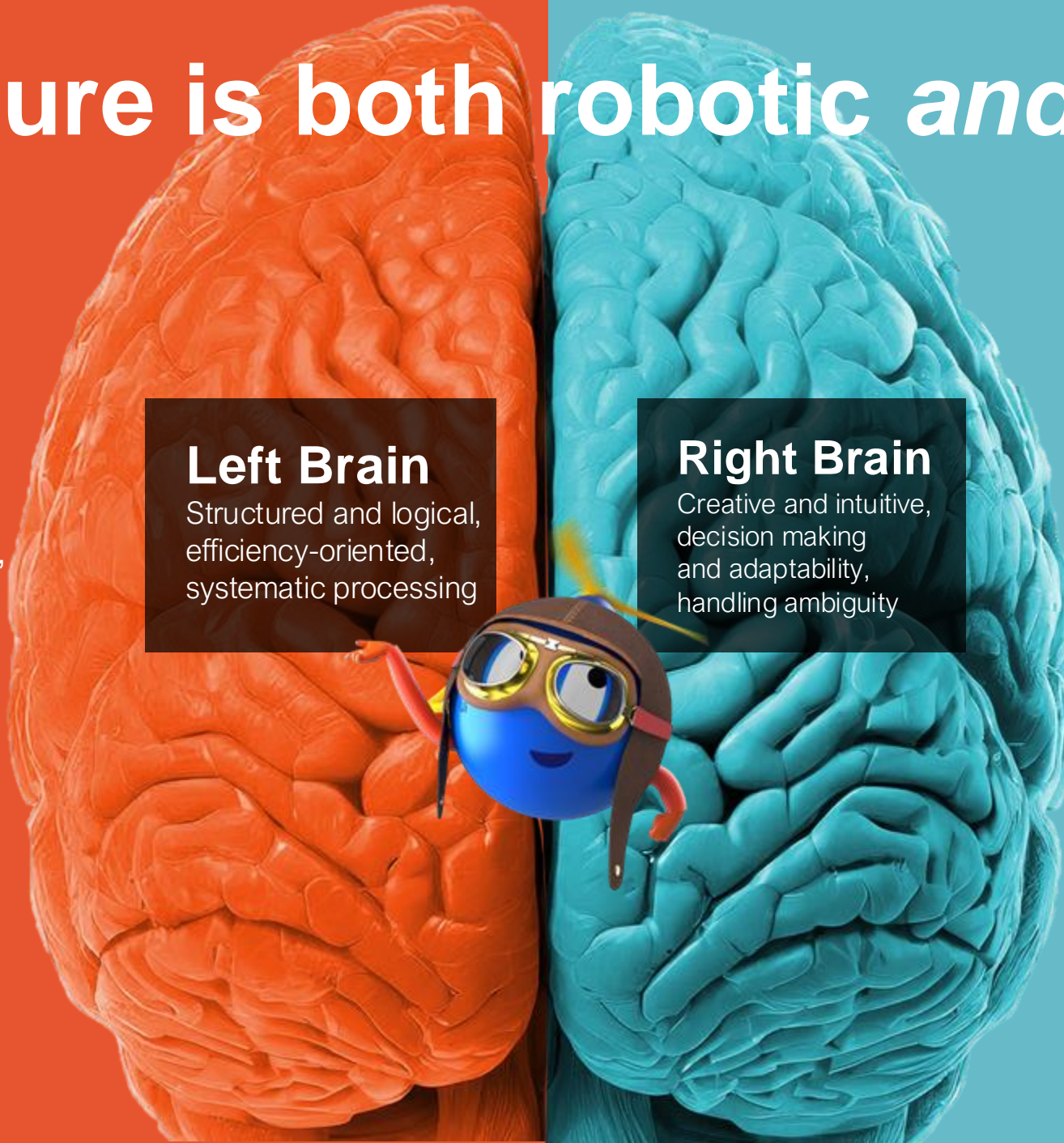
Structured and logical,  
efficiency-oriented,  
systematic processing

### Right Brain

Creative and intuitive,  
decision making  
and adaptability,  
handling ambiguity

## Agentic

Large Action model,  
autonomous decision  
making, adaptive behavior



# Human *and* AI Collaboration

## RPA

**100%**

People create and maintain automations

## Agentic

80% Humans  
20% Agent

20% Humans  
80% Agent

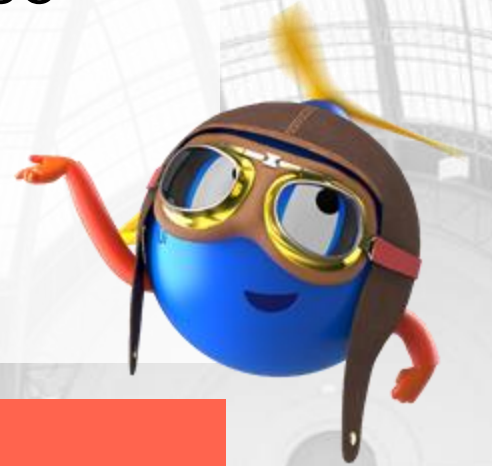
**100%**  
Agent

AI will increasingly **create** and **maintain** full automations



# Automation enables AI

- Automated tasks facilitate higher levels of intelligence
- AI's real power is creating more tasks
- These tasks do not need LLMs



On the evolution towards AGI:  
Your investment in automation is safe, foundational,  
and will only grow



demo



# Final thought

## Our return to customer first

