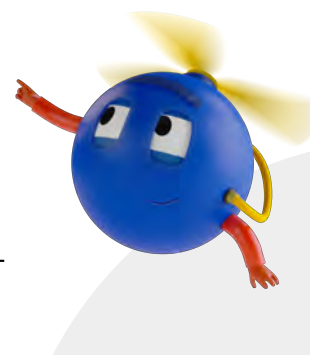
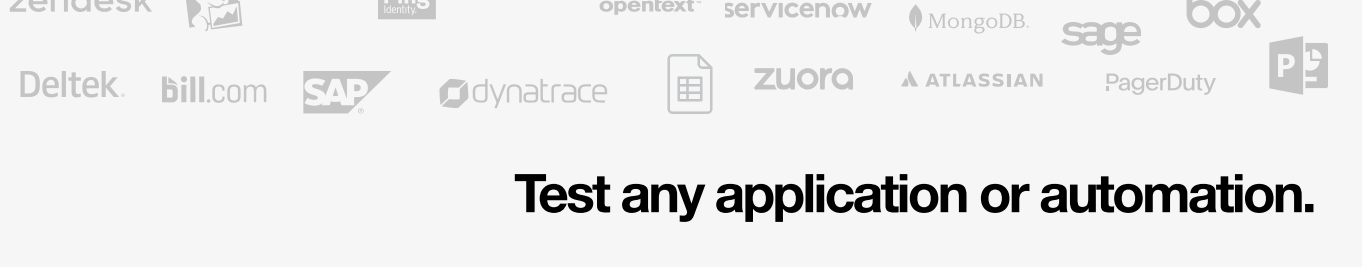
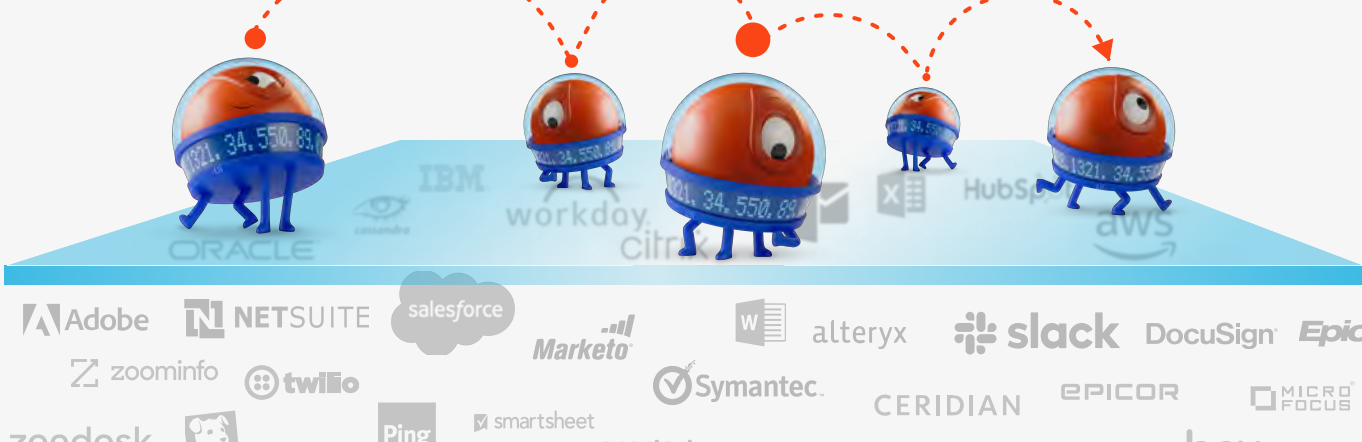


Accelerate and streamline value delivery at scale with UiPath Test Suite

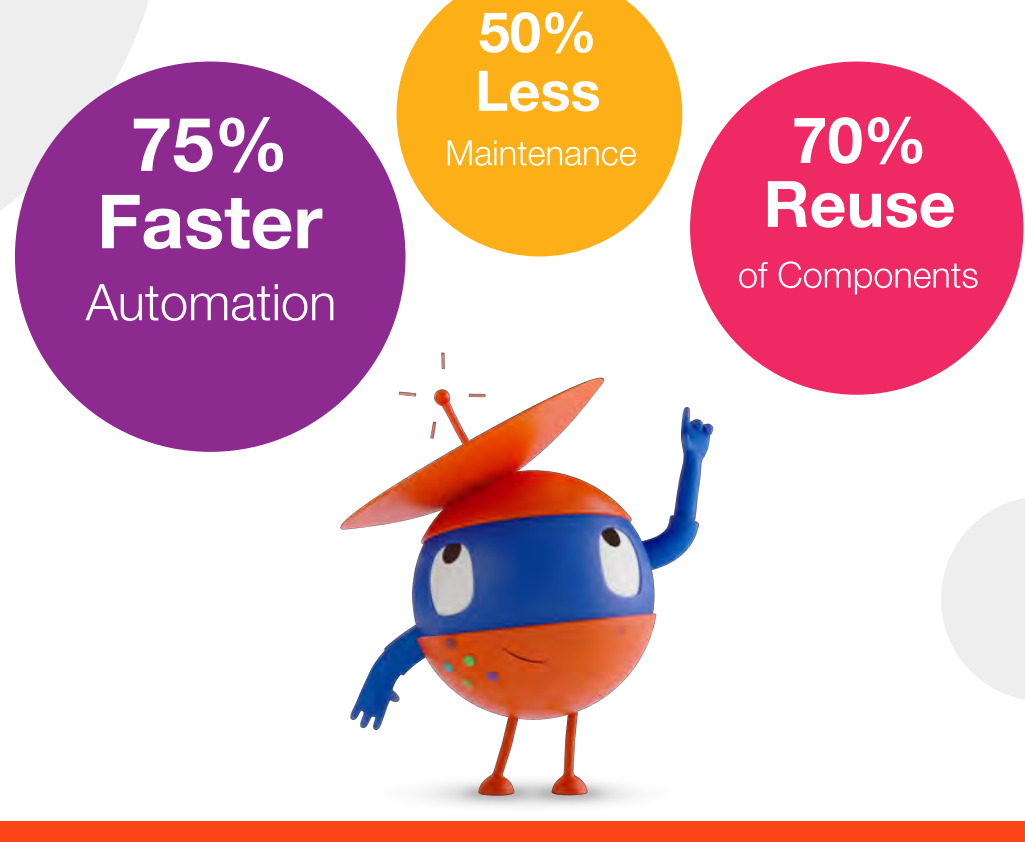
Deliver automations and applications quickly and continuously at scale with enterprise-wide, production-grade, and AI-powered test automation capabilities



Automate more. Forget maintenance.



Test any application or automation.



UiPath Test Suite is made up of four AI-powered products

UiPath Test Manager

Manage tests with comprehensive test planning, defect reporting, automatic test generation, and requirements traceability

UiPath Studio

Automate tests and test data generation with AI-powered automation capabilities

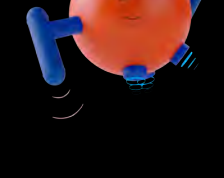
UiPath Orchestrator

Distribute tests to schedule, monitor, and store dynamic test data for test execution & analyze detailed results

UiPath Test Robots

Execute tests on multiple machines in parallel and receive reports back

Benefits those who create and depend on test automation



RPA Teams

Detect and resolve automation glitches at lightning speed before they hit production to deploy with confidence



Test Teams

Effortlessly automate, execute, and manage tests across virtually any technology without worrying about maintenance



Transformation Leaders

Leverage the skills of your workforce to accelerate value delivery across all functions and departments

Reduce operational and business risks faster at a lower cost

Make testing more effective and efficient to find and fix automation and application issues before they impact production



Application Testing

Build resilient test automation for any UI and API of modern applications and enterprise applications.



RPA Testing

Add automated test cases within your RPA workflows to ensure their resilience against environmental changes.



Mobile Testing

Create automated test cases to check the quality of your web, native, or hybrid mobile apps on different devices & operating systems.



SAP Automation

Use prebuilt SAP activities from certified SAP WinGUI automation to create resilient automations for SAP S/4HANA and SAP ECC systems.



RPA Test Coverage

Ensure every activity in your robot's workflow is covered by automated test cases with the Activity Coverage analytics panel.



Test Management

Create, manage, and map test cases and their execution results to requirements and defects in Jira to integrate testing into your development process.



Test Data Management

Generate, manage, and reuse test data to drive testing with consistent and targeted data variations.



API Automation

Check the quality of your software applications continuously at the API level to accelerate test case execution by orders of magnitude.



SAP Usage Visualization

Uncover test automation opportunities based on actual SAP usage with the Heatmap for SAP.



Execution Orchestration

Group test cases into test sets, monitor and schedule distributed execution, and analyze detailed result logs in UiPath Orchestrator.



Adaptive Test Execution

Create dynamic test sets for enhanced flexibility in planning and test execution and reduced time spent on maintaining test sets.



Low-Code Testing

Enable all roles in testing to create test automations with low-code, production-grade Studio for resilient end-to-end testing.



Data-Driven Testing

Process multiple data variations from various data sources through your automated test cases to check complex business logic in one go.



Enterprise Integrations

Connects with popular lifecycle management and DevOps tooling to seamlessly integrate into your existing delivery processes. Integrations are currently available for Atlassian Jira, Microsoft Azure DevOps, Jenkins, Xray, and SAP Solution Manager.

Meet the Suite!

Learn more about the products.



Explore →

Try it out →

Contact us →

Watch Test Suite in action

Download the community edition

Talk to our knowledgeable sales team!