

## Kevin Mooney

Director, Customer Security & Trust  
UiPath



## Sebastian Ungureanu

Senior Manager, Product Marketing  
UiPath

# Disclaimer

The following is intended to outline our general product direction. It is intended for information purposes only, and may not be incorporated into any contract.

It is not a commitment to deliver any material, code, or functionality, and should not be relied upon in making purchasing decisions.

The development, release, and timing of any features or functionality described for UiPath's products remains at the sole discretion of UiPath.

## 01

### What UiPath Provides out of the box

- Compliance
- Hardening & Vulnerability Management

## 02

### What to Configure in the platform

- Governance Policy
- Audit Logging across services
- Additional Platform Security Features
- Robot Credential Management

## 03

### Rules for the COE

- Automation Lifecycle Checks
- Common SOC Rules



## Secure and compliant platform

- Best-in-class security, governance, and automation management
- Full coverage of the entire human-robot work continuum
- Full audit trails & logging for easier risk management
- Compliance & certifications



## Security built directly into our development lifecycle

- Every UiPath product is designed and developed with security in mind
- Hardening and vulnerability management
- Independent third-party review
- Active investments in security as part of our roadmap



## Open, flexible and responsible AI

- Safeguards for data protection
- Human-centricity and transparency
- Technical and security robustness
- Empowering digital education and upskilling

# Recent highlights in Automation Cloud



## With cloud-first delivery,

Automation Cloud is the best way to receive new security-related product features **first and easily** – recent highlights include:

- ✓ Livestreaming, remote control and video recording
- ✓ Customer Managed Keys (BYOK)
- ✓ IP Range Filtering
- ✓ Organization Access Policy
- ✓ Organization-level API
- ✓ HITRUST attestation
- ✓ Delayed Update Ring
- ✓ Canary Tenant
- ✓ Bring your own license for Automation Cloud Robots
- ✓ SOC® 2 Type 2 attestation across the platform
- ✓ Myriad Automation Cloud Robot features

# Commitment to Compliance



SOC 2 Type 2– 100% of GA Cloud services



HIPPA Type 2 – 95% of GA Cloud services



HITRUST – New for UiPath this year



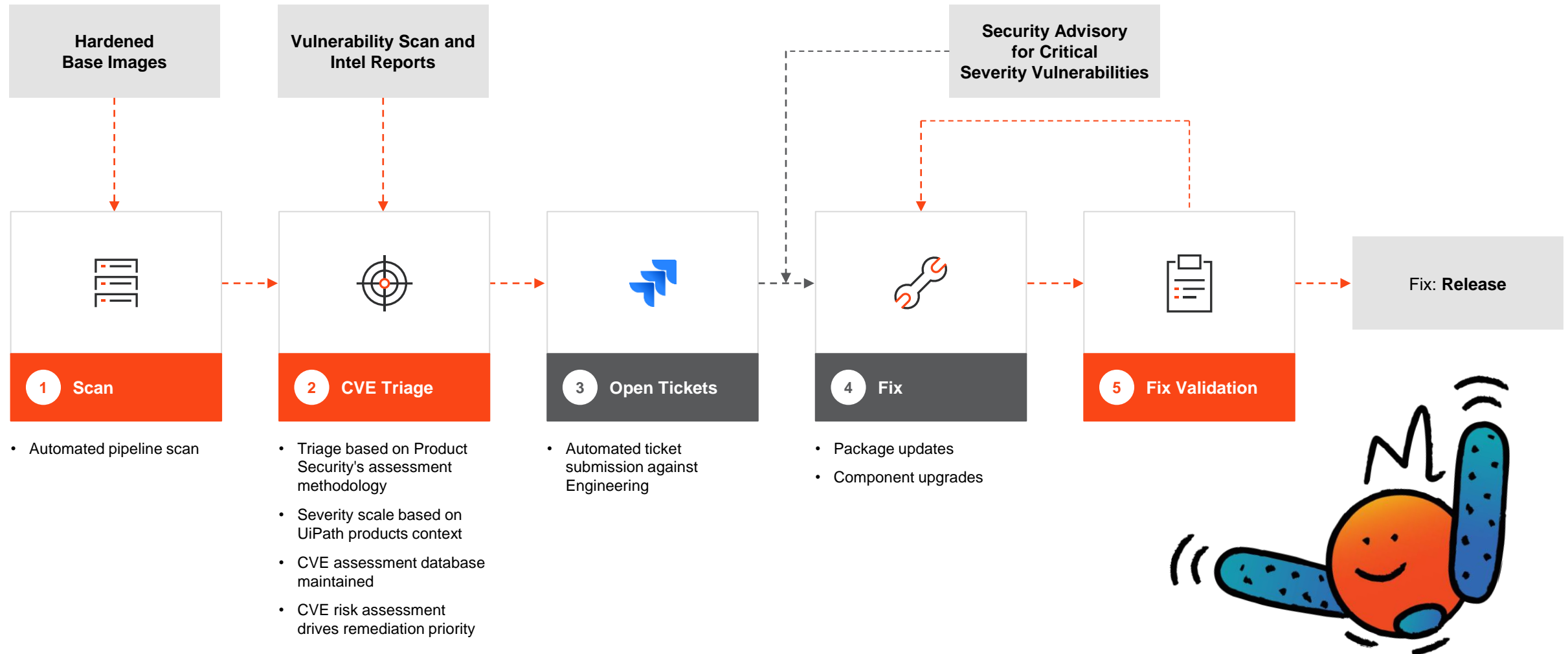
ISO/IEC 27001:2013 with ISO/IEC 27017:2015  
& ISO/IEC 27018:2019  
ISO 9001:2015  
Cyber Essentials



## Looking for something else?

Ask your account rep to add it to our roadmap.

# Hardening & Vulnerability Management

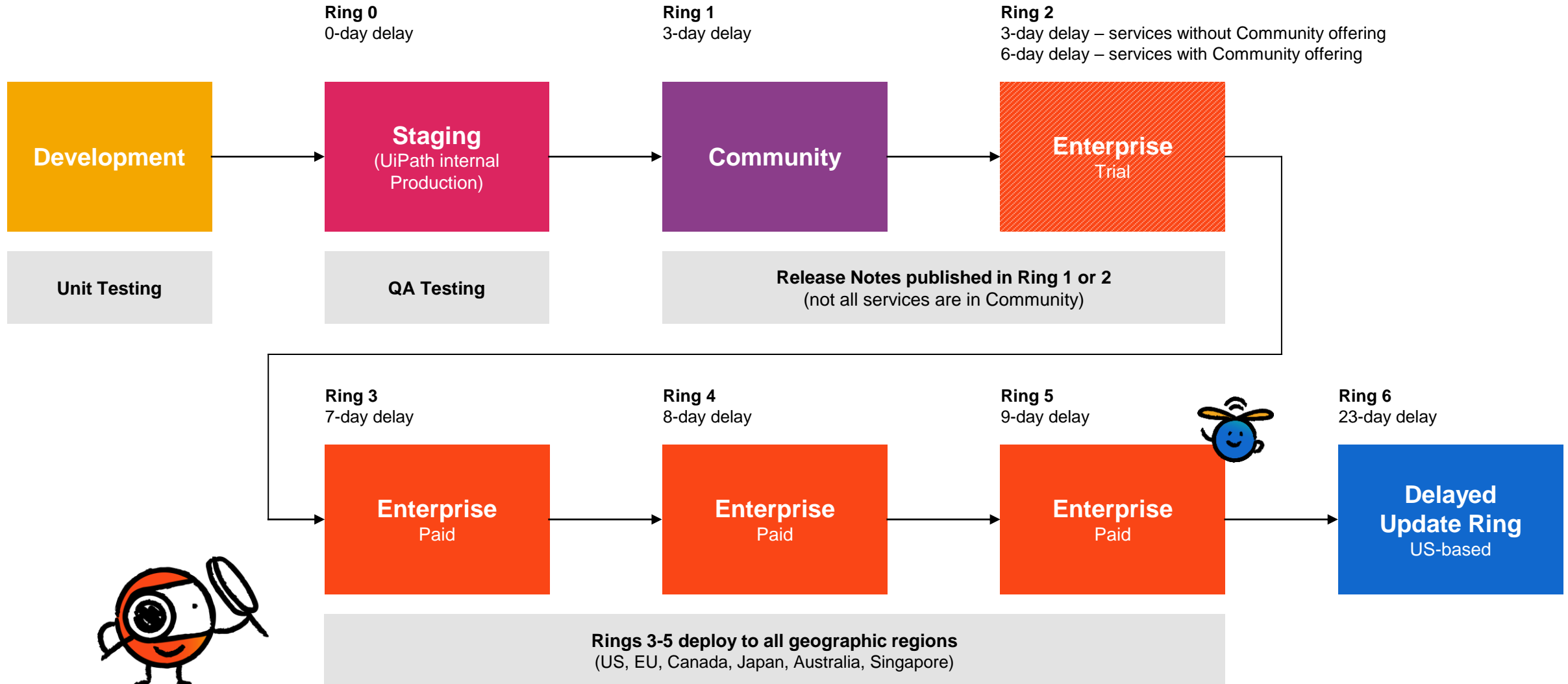




# Configuring the Platform



# Ring Deployment Model



# Bring Your Own Key



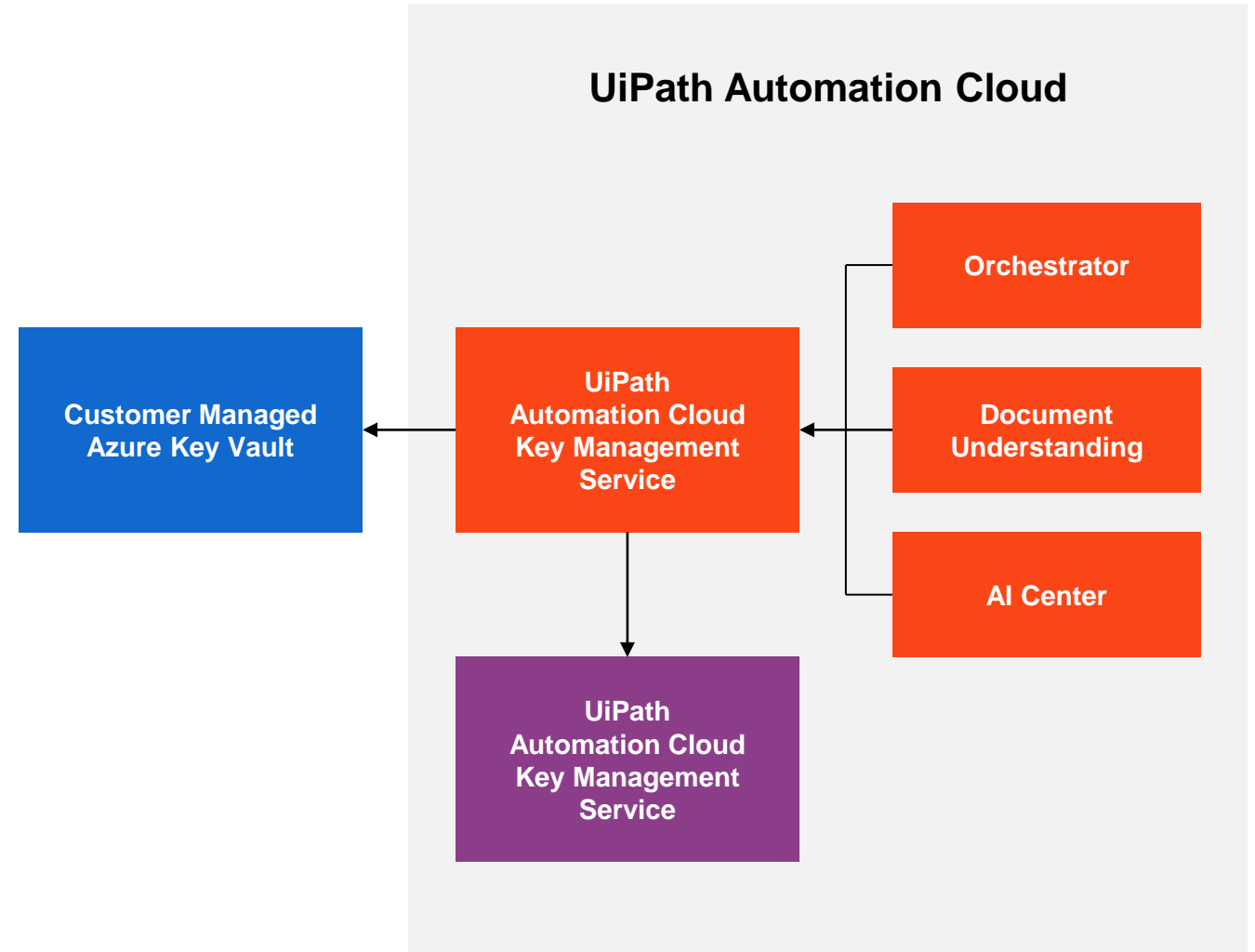
## Orchestrator Application-Level Encryption

- ✓ Robot Credentials
- ✓ Credential Assets
- ✓ Queues\*



## Coming Soon For Orchestrator

- ✓ Storage Buckets
- ✓ Logs



# Cloud Logging Considerations

Log Type	Retention
Platform Audit Logs	2 Years; Retrievable by API or Export from UI
Orchestrator Audit Logs	2 Years; Retrievable by API or Export from UI
Orchestrator Robot Logs	30 Days; Auto-Exportable or Retrievable by API or Manual Export
Audit Logs for all other services	2 Years; Retrievable by Export from UI



### Automation Cloud API

supports log retrieval with services continually being added.



### Automation Suite

supports forwarding logs via Fluentd.



UiPath also maintains infrastructure logs for backend service reliability, audit, and security for services.

# Robot Credential Management

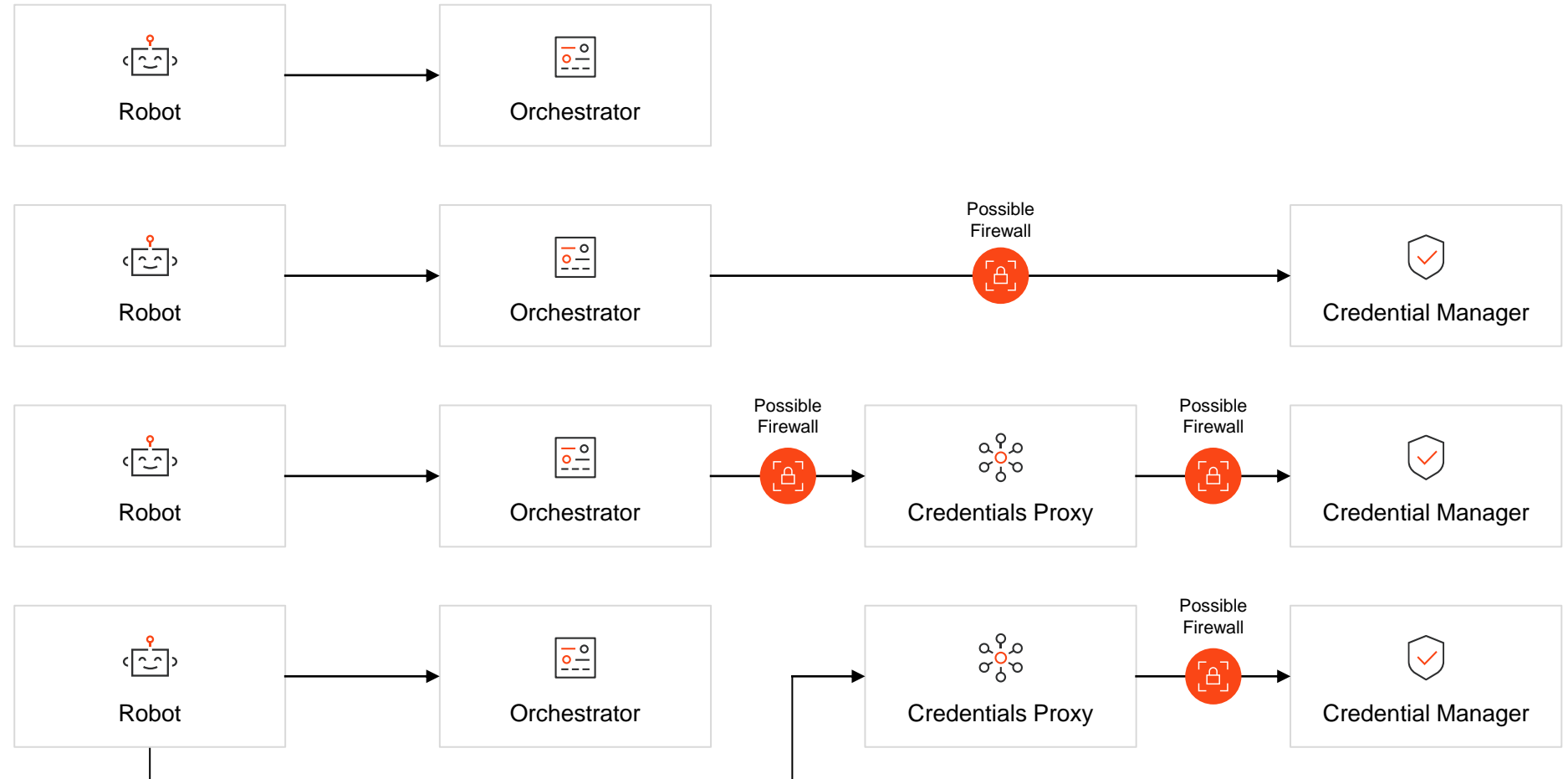
## Option

Default – Credentials in Orchestrator

Credential Manager

Orchestrator Credentials Proxy

Disconnected Credentials Proxy  
(Robot Creds Only)



# Automation Ops – Pipelines & Source Control



Implement Development Pipeline without need for 3<sup>rd</sup> party tools (uses Unattended Robot and Orchestrator)



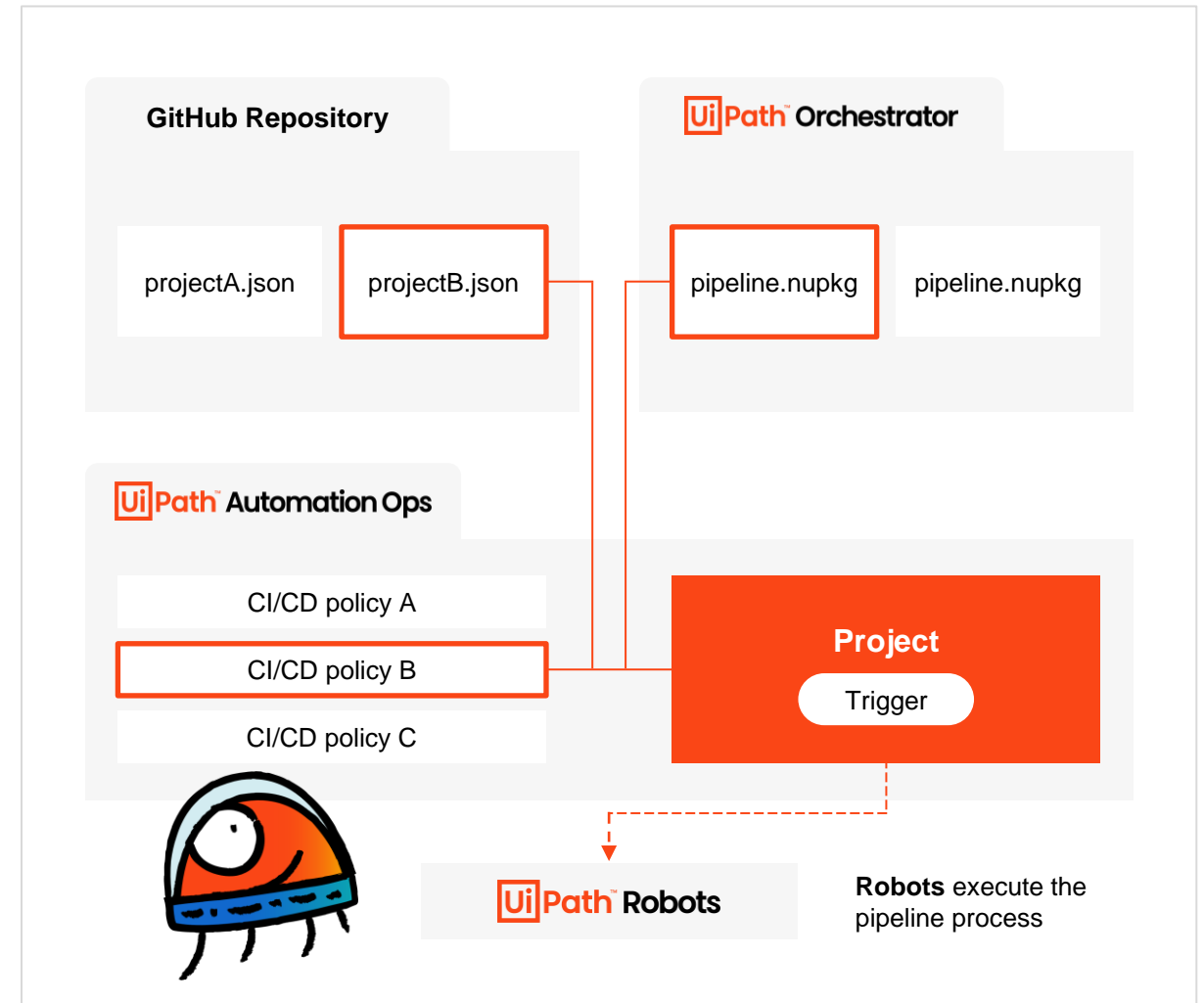
Support for multiple approval workflows



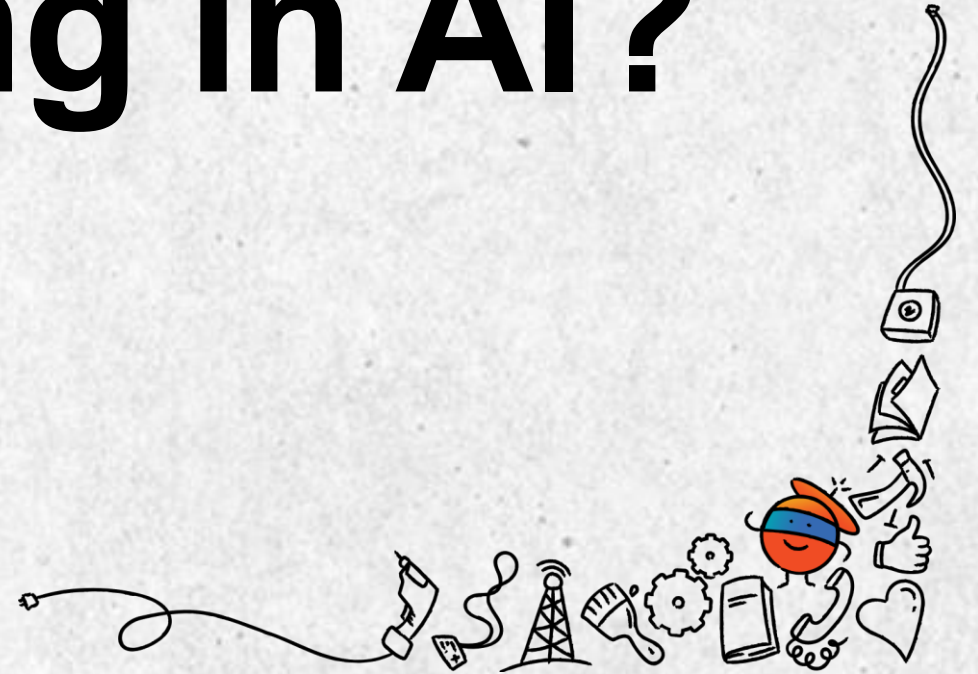
Direct support for segregation of duties with no need for developers to publish in production



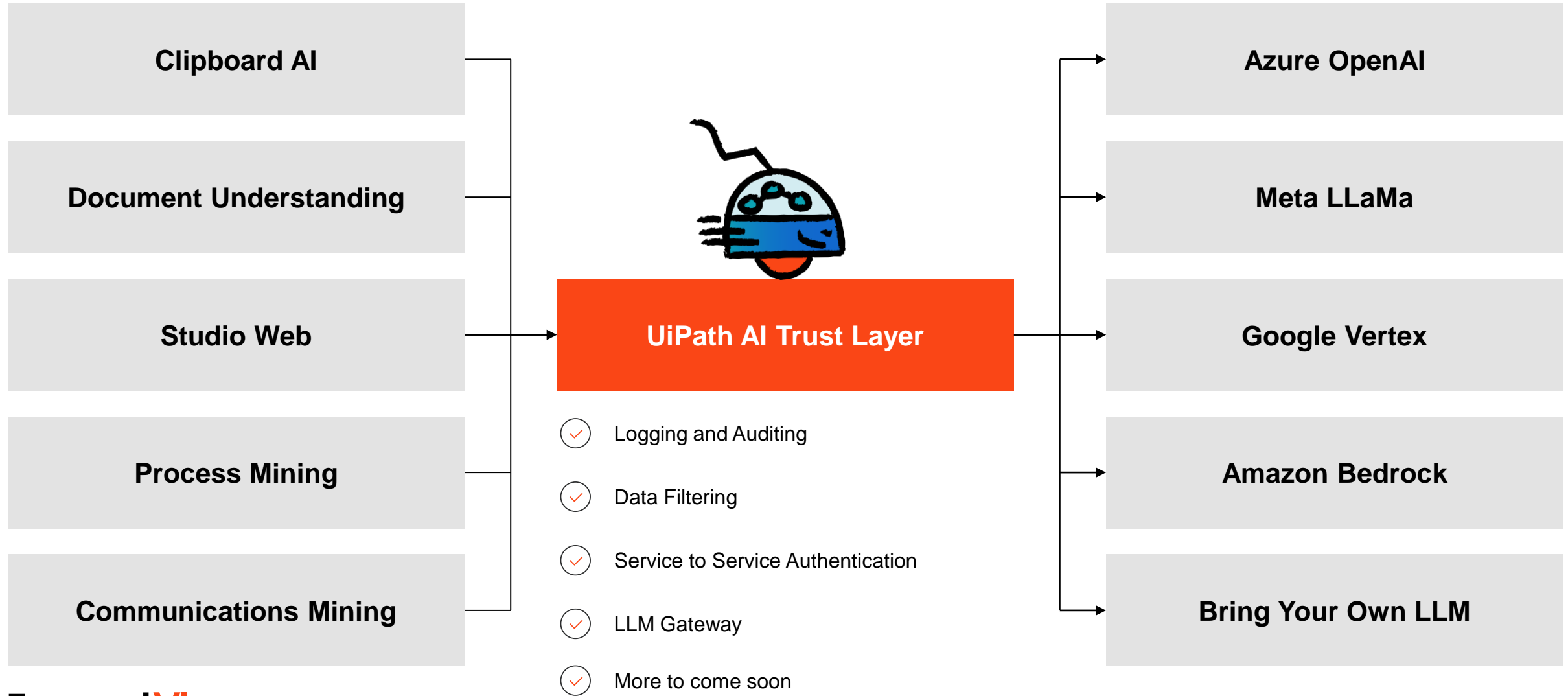
Built-in support for Workflow Analyzer checks



# What's coming in AI?



# UiPath AI Trust Layer





# Keep in touch

Have more questions?

Want to download this presentation?

Go to <https://www.uipath.com/legal/trust-and-security> or scan the QR code below:

