

A person wearing a bright red jacket and dark pants stands on a large, mossy rock in the foreground. In the background, a massive waterfall cascades down a dark, rocky cliff. The water is white and frothy as it falls. The scene is dramatic and awe-inspiring, with the person appearing small against the scale of the waterfall.

AI-powered building blocks

**UiPath Platform Spotlight:
The June Release Event**

Event agenda

Keynote
30 min



Build higher-quality automations, faster than ever, with UiPath Autopilot™ and GenAI

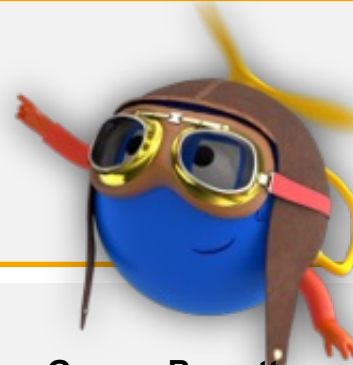
Craig Dewar
VP Product Marketing, UiPath

**AI
Session**
20 min



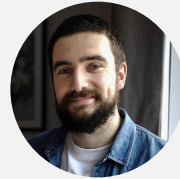
AI-powered building blocks

Scott Schoenberger
Sr. Manager, Product Management, UiPath



**AI
Session**
20 min

AI built for your documents



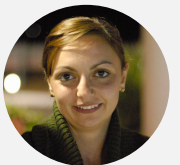
George Barnett
Director,
Product Management,
UiPath



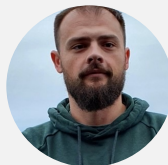
Betty Kim
Director,
Product Management,
UiPath

**Autopilot
breakouts**
20 min

Autopilot for developers



Magda Neagu
Director
Product Marketing,
UiPath



Alexandru Roman
Director
Product Management,
UiPath

Autopilot for testers



Ingo Phillip
Sr. Director
Product Management
UiPath

The UiPath June 2024 Release:

Build higher-quality automations, faster than ever, with UiPath Autopilot™ and GenAI.

Introducing UiPath Autopilot™

We are infusing GenAI deeply into the UiPath Business Automation Platform to redefine the Enterprise Automation category. Today, we are excited to deliver on the promise of AI-powered productivity with the release of UiPath Autopilot™ for developers and testers.

1

AI-powered building blocks

AI can simplify common developer tasks, like working with forms and unstructured text. To deliver on this promise, we have created AI-powered building blocks for UiPath Studio leveraging a combination of GenAI and specialized AI—including our award-winning Clipboard AI.

2

AI built for your documents

The best document understanding solution just got better. UiPath LLMs now power improved data extraction. Validation gets a second opinion from GenAI, and there are new human in the loop experiences.

3

Enterprise-grade cloud

Automation is a can't-fail part of your IT landscape. We continue to deliver on your requirements for an enterprise-grade foundation to run and optimize a mission-critical automation program at high scale.

4



The UiPath June 2024 Release:

Build higher-quality automations, faster than ever, with UiPath Autopilot™ and GenAI.

Introducing UiPath Autopilot™

We are infusing GenAI deeply into the UiPath Business Automation Platform to redefine the Enterprise Automation category. Today, we are excited to deliver on the promise of AI-powered productivity with the release of UiPath Autopilot™ for developers and testers.

1

AI-powered building blocks

AI can simplify common developer tasks, like working with forms and unstructured text. To deliver on this promise, we have created AI-powered building blocks for UiPath Studio leveraging a combination of GenAI and specialized AI—including our award-winning Clipboard AI.

2

AI built for your documents

The best document understanding solution just got better. UiPath LLMs now power improved data extraction. Validation gets a second opinion from GenAI, and there are new human in the loop experiences.

3

Enterprise-grade cloud

Automation is a can't-fail part of your IT landscape. We continue to deliver on your requirements for an enterprise-grade foundation to run and optimize a mission-critical automation program at high scale.

4



AI at work: the UiPath Business Automation Platform

Discover

Identify the highest-ROI opportunities for continuous process optimization and automation using the power of AI



PROCESS MINING

TASK MINING

COMMUNICATIONS MINING

IDEA CAPTURE & MANAGEMENT

Automate

Rapidly build AI-powered automation that seamlessly collaborates with people and systems to transform every facet of work



UI + API
AUTOMATION

LOW-CODE
DEVELOPMENT

GENERATIVE AI
& EXPERIENCES

INTELLIGENT DOCUMENT
PROCESSING & SPECIALIZED AI

PROCESS
ORCHESTRATION

Operate

Establish an enterprise-grade foundation to run and optimize a mission-critical automation program at high scale



REAL-TIME & TREND
ANALYTICS

CONTINUOUS TESTING

UNIFIED MANAGEMENT
& GOVERNANCE

CLOUD-FIRST FLEXIBILITY

**Your
People**

Your Applications

Systems of record | Communications and collaboration | Personal productivity

**Your
Processes**

Our approach to Generative AI

1



Supercharge Productivity

Upskill talent and supercharge productivity.

2



Enhance Quality & Accuracy

Reduce friction with increased accuracy, performance and reliability.

3

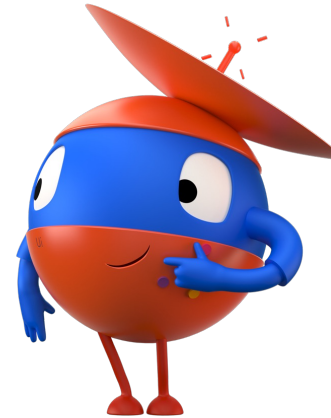


Automate More

GenAI unlocks new Automation use cases.

Context Grounding

Use your business-specific data with GenAI-powered automations & experiences.

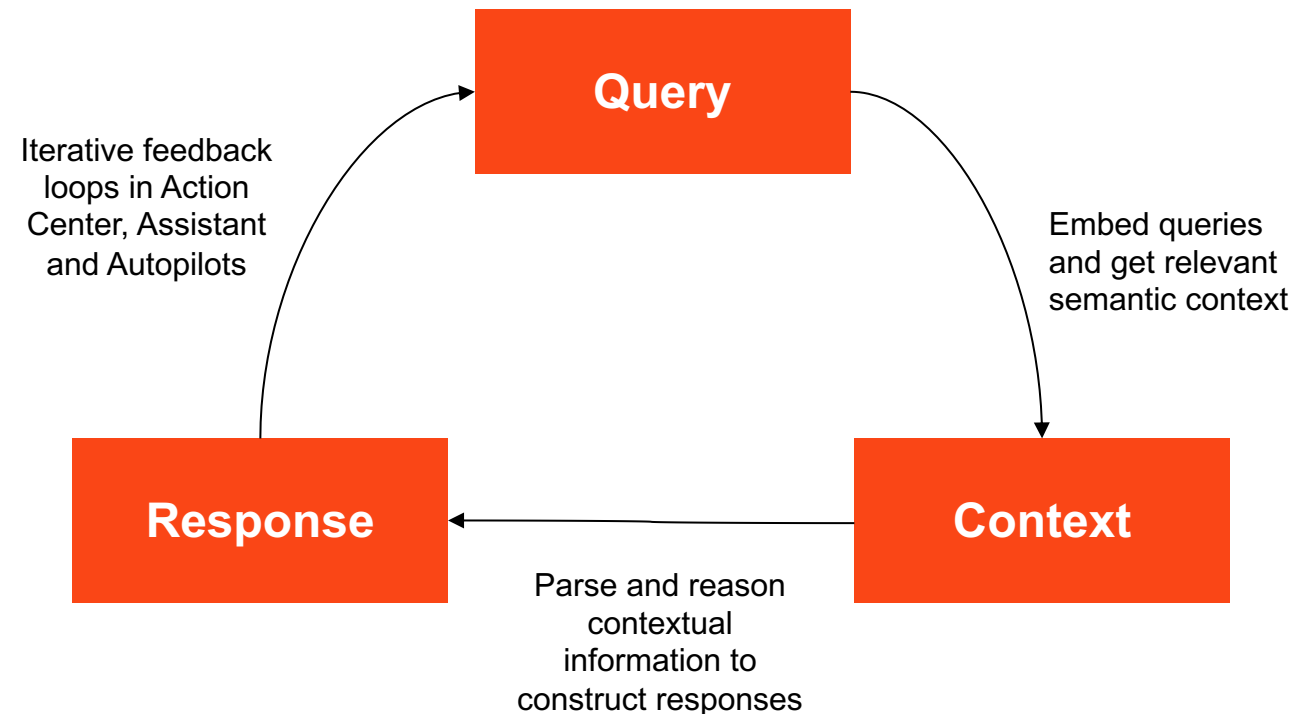


Context grounding

Empower all UiPath services with the power of Retrieval Augmented Generation:

- Overcomes LLM context window limitations
- Reduces risks of hallucination through reference to ground truth data stores
- Gives Generative apps access to specialized and proprietary knowledge sources
- Gives Generative apps access to up to date sources of information
- Enables positive feedback loops between data stores and user-queries

Now entering Public Preview Soon!



Context from Large Complex Documents

Version 23.0

Effective 26-Jun-2023 EST

FORM-298382938

docNet

HLS Services, LLC.	Document No.: FORM-298382938		
Title: Medical Staff Reference	Ver.: 23.0	Page 9 of 102	

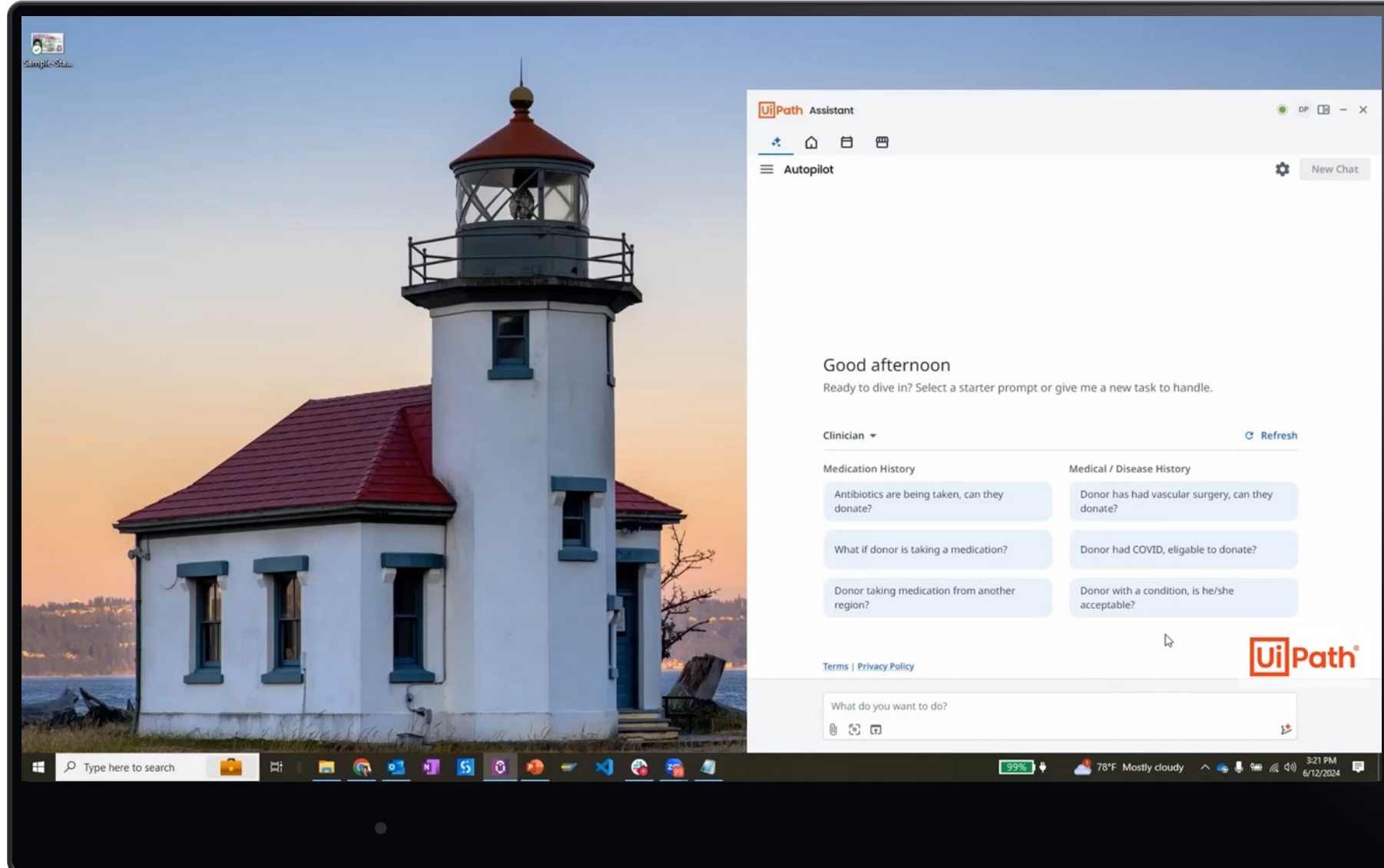
Medical Topics, Alphabetical Listing

Abscess Drainage	If ...		Then ...	
	Closed		Acceptable if Antibiotics criteria met	
Absorica® (isotretinoin)	Regulatory Requirement Refer to FORM-298382938 – Medication list			
Accutane® (isotretinoin)	Regulatory Requirement Refer to FORM-298382938 – Medication list See Tretinoin for topical use			
Acne, Acne Rosacea	Acceptable. Antibiotics to treat acne are not cause for deferral			
Acoustic Neuroma	Acceptable if at least 4 weeks since surgery or gamma knife treatment			
Actinic Keratosis	If ...		Then ...	
	Recently removed		Defer until healed	
	All others		Acceptable	
Acupuncture, Dry Needling	Acceptable condition AND			
	If performed by...		Then ...	
	Licensed practitioner		Acceptable	
	Non-licensed practitioner		Regulatory Requirement FORM-298382938 – Unsuitable Events Management Table	

Addison's Disease	Permanent deferral			
Adrenal	If ...		Then ...	
	Cyst, Benign		Acceptable	
	Hyperplasia, Congenital		Permanent deferral	
	Insufficiency		Permanent deferral	
Allergies	If ...		Then ...	
	Allergic to adhesives (e.g., Band-Aid®)		Acceptable if: Alternative dressing is used in center	

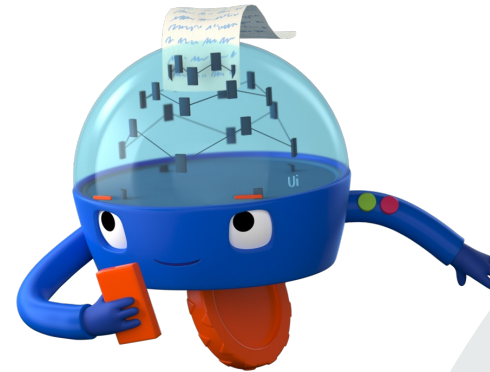
Abscess Drainage	If ...		Then ...	
	Closed		Acceptable if Antibiotics criteria met	
Absorica® (isotretinoin)	Regulatory Requirement Refer to FORM-298382938 – Medication list			
Accutane® (isotretinoin)	Regulatory Requirement Refer to FORM-298382938 – Medication list See Tretinoin for topical use			
Acne, Acne Rosacea	Acceptable. Antibiotics to treat acne are not cause for deferral			
Acoustic Neuroma	Acceptable if at least 4 weeks since surgery or gamma knife treatment			
Actinic Keratosis	If ...		Then ...	
	Recently removed		Defer until healed	
	All others		Acceptable	
Acupuncture, Dry Needling	Acceptable condition AND			
	If performed by...		Then ...	
	Licensed practitioner		Acceptable	
	Non-licensed practitioner		Regulatory Requirement FORM-298382938 – Unsuitable Events Management Table	

UiPath Autopilot™ with Context Grounding



GenAI Activities

Curated collection of activities that simplify common GenAI use cases for automation developers.



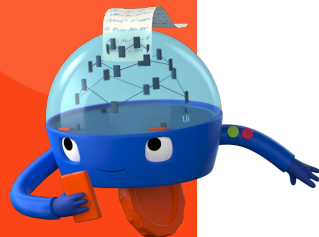
GenAI Activities

Deliver business automation value with GenAI.

Activities making it easy to access, develop with, and leverage high quality AI predictions in automation workflows.

- Access to UiPath-managed LLMs and other LLM lifecycle tools (R.A.G., Prompt Evaluation, Proof of Knowledge, etc).
- Configurable with Action Center for Human in the Loop review
- Supported by UiPath AI Services products for data grounding, governance, and monitoring

Now entering General Availability!



GenAI Activities

Content Generation

Language Detection

Email Generation

Summarization

Language Translation

PII Detection

Rewrite

Named Entity Recognition*

Categorization*

Object Detection*

Image Classification*

By 2024.10*



AI Trust Layer

PII Filtering – Context Grounding

UiPath-managed LLMs

GenAI Activities

The screenshot displays the 'Generate Email' activity within the UiPath GenAI Activities interface. The interface is titled 'Product Usage Data Insights Email' and includes a 'Saved recently' button. Below the title, there are two tabs: 'Test step-by-step' and 'Publish'. The main configuration area is divided into several sections:

- Input:** A text box containing 'providing expert insights'.
- Manage Properties:** A button with a plus icon and the text 'Manage Properties'.
- Show additional properties:** A button with a plus icon and the text 'Show additional properties'.
- Generate Email:** A section with a gear icon and a dropdown menu for 'UiPath GenAI Activities connection *' set to 'scott.schoenberger@uipath.com [default]'. Below this is a 'Model name*' dropdown set to 'gpt-4-1106-Preview'. The 'Email content*' section contains a text area with the following text: 'Email should contain product usage data insights in both bulleted and paragraph form. It should also provide a link to the product dashboard at the bottom of the email. Please do not include a subject line or a sign off.' Below the text area is a 'Style' dropdown set to 'Concise'. The 'Output format' dropdown is set to 'HTML'. At the bottom of this section is another 'Manage Properties' button.

The interface also features a zoom control at the bottom left showing '100%' and a 'Publish' button at the top right.

AI Trust Layer

Trust, transparency, and control when using GenAI in the UiPath Platform.



Governance Policies

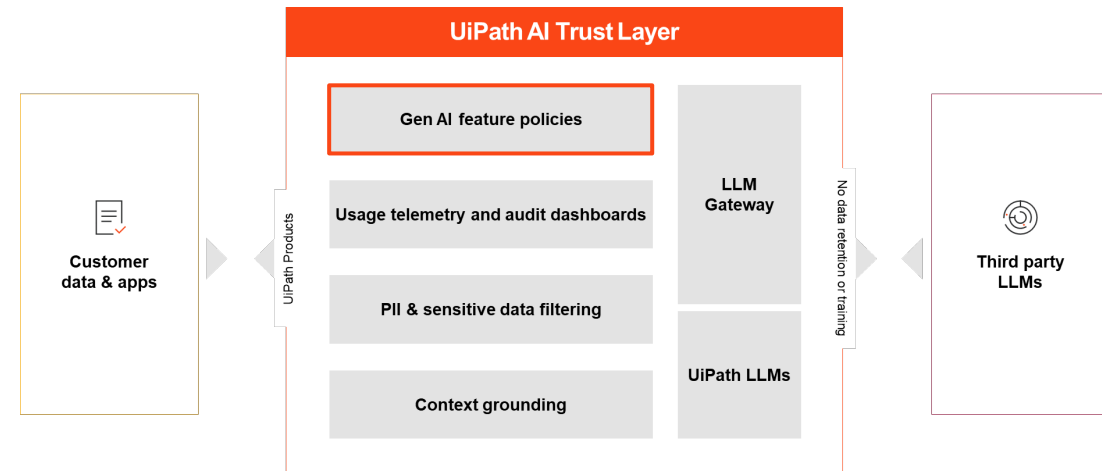
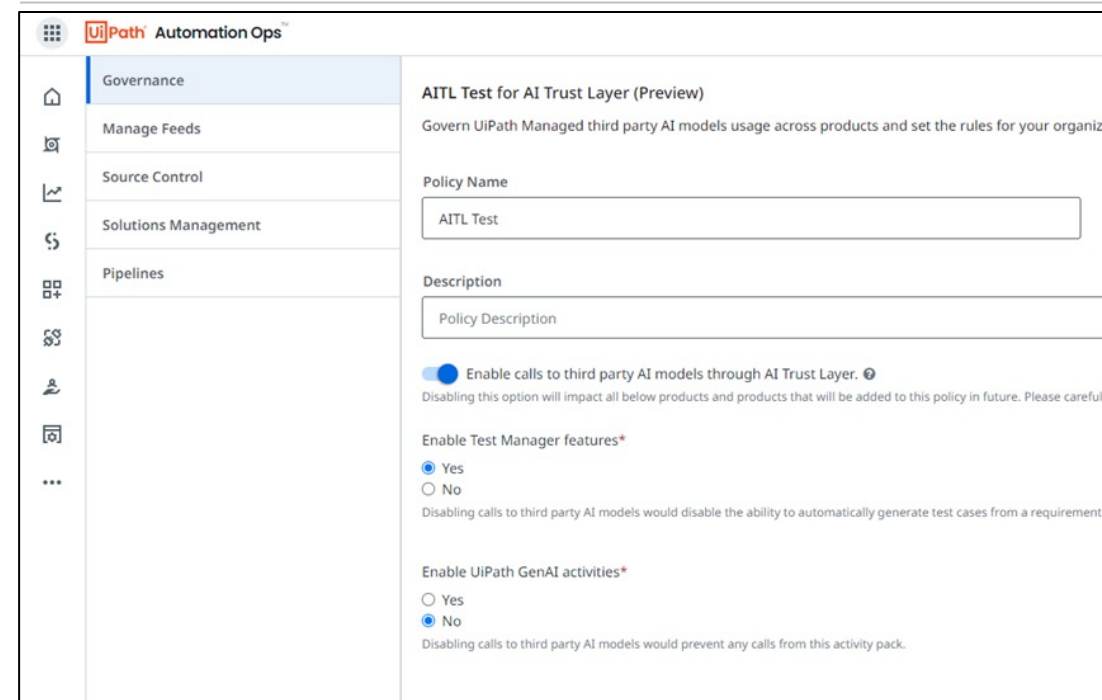
Govern GenAI products from one place

- Based on Automation Ops
- Create policy to select what product can or can't use gen AI
- Deploy the policy at Tenant/Group/User level

Currently enabled for:

- Autopilot for Test (Test Manager)
- Autopilot for Apps (Apps)
- UiPath GenAI activities

Now entering Public Preview!

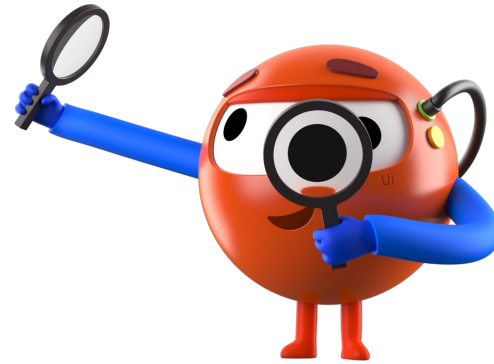


 The screenshot shows the 'UiPath Automation Ops' interface, specifically the 'Governance' section. The left sidebar lists navigation options: Governance, Manage Feeds, Source Control, Solutions Management, and Pipelines. The main content area is titled 'AITL Test for AI Trust Layer (Preview)' and describes the purpose of governing third-party AI models. It includes a 'Policy Name' field with the value 'AITL Test' and a 'Description' field with the value 'Policy Description'. Below these fields are three toggle switches:

- 'Enable calls to third party AI models through AI Trust Layer.' is turned on (blue).
- 'Enable Test Manager features*' has 'Yes' selected (blue).
- 'Enable UiPath GenAI activities*' has 'No' selected (blue).

 Each toggle has a corresponding warning message about the impact of disabling the feature.

Intelligent UI form handling

Activities that work seamlessly with forms using UiPath specialized AI and the learnings from Clipboard AI.



Intelligent UI form handling

Improved UI forms handling with **specialized AI** and learnings from **Clipboard AI**.

- Resilient to UI changes
- Speed development
- Reduce maintenance

Now entering Public Preview!



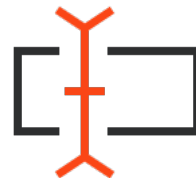
Form Fill

Uses AI to complete a form.



Form Copy

Uses AI to read the data from a form.



Set Value

Uses AI to input data into a single field.

The UiPath June 2024 Release:

Build higher-quality automations, faster than ever, with UiPath Autopilot™ and GenAI.

Introducing UiPath Autopilot™

We are infusing GenAI deeply into the UiPath Business Automation Platform to redefine the Enterprise Automation category. Today, we are excited to deliver on the promise of AI-powered productivity with the release of UiPath Autopilot™ for developers and testers.

1

AI-powered building blocks

AI can simplify common developer tasks, like working with forms and unstructured text. To deliver on this promise, we have created AI-powered building blocks for UiPath Studio leveraging a combination of GenAI and specialized AI—including our award-winning Clipboard AI.

2

AI built for your documents

The best document understanding solution just got better. UiPath LLMs now power improved data extraction. Validation gets a second opinion from GenAI, and there are new human in the loop experiences.

3

Enterprise-grade cloud

Automation is a can't-fail part of your IT landscape. We continue to deliver on your requirements for an enterprise-grade foundation to run and optimize a mission-critical automation program at high scale.

4



Thank you!

