

# UiPath Business Automation Platform for SAP Testing

**UiPath has made it easier than ever for SAP customers to fully maximize their enterprise automation capabilities. Building on its status as an SAP PartnerEdge® Silver Partner, UiPath consistently looks for ways to help SAP customers transform their organizations through automation—including automating the testing process with UiPath Test Suite.**

Up to 40% of the typical ERP implementation budget can get eaten up by QA testing. But automating the testing process with legacy testing solutions can be tricky. Plus, many automated testing tools can have a low ROI because you probably won't use them post-implementation. So how can you tackle these challenges?

Meet UiPath Test Suite. UiPath Test Suite provides end-to-end automation for any enterprise resource planning (ERP) business processes or application integrations. It simplifies the user experience, accelerates test cycles, and streamlines SAP S/4HANA® migrations. Thanks to its low-code interface, almost any analyst or tester can develop and maintain new automations in UiPath Studio. Customers have reduced test cycles by as much as 50%, improved automated test coverage by two to three times, and reduced overhead costs by up to 30%. The UiPath Platform is also purpose-built for enterprise automation. It features reusable component libraries that can be shared across test, IT, and robotic process automation (RPA) teams.

An easy-to-learn, low-code approach empowers testers to create their own test automations, which frees up developers for other mission-critical work. UiPath connectors also integrate seamlessly with your existing SAP ecosystem for a smoother development process. And through the UiPath partner ecosystem, you can access hundreds of prebuilt workflows specifically for SAP testing.



**After 20+ years, the time has come to stop paying the testing tax**

**30%**  
of a typical SAP budget is allocated to testing

**72%**  
of SAP customers still depend on manual testing to uncover critical defects

**63%**  
claim testing as the #1 bottleneck for software delivery (DevOps review survey)

# What makes UiPath different?



## SAP S/4HANA implementation and migration projects

UiPath unlocks automation potential for organizations migrating to SAP S/4HANA across all project phases: from designing through preparing and developing, to supporting data migration, and finally to automating the validation and testing phase. With the UiPath Platform, you can start building your robots and testing portfolio for SAP business processes during the initial implementation project. You can also reuse the same robots and test cases for future project waves and keep pace with ongoing SAP changes with Change Impact Analysis for SAP. Plus, you can easily convert test cases into production operation automation workflows thanks to the single platform UiPath has built for enterprise-wide automation. You'll save time and money and significantly reduce the risk of your migration project.



## UiPath automation capabilities for SAP

UiPath provides automation capabilities for SAP user interface technologies such as SAP GUI, SAP Fiori®, and SAP NetWeaver Business Client. Modern cloud offerings such as SAP S/4HANA®, SAP SuccessFactors® solutions, SAP Customer Experience solutions, SAP Ariba® solutions, SAP Fieldglass® solutions, and SAP Concur® solutions can be easily automated through native integrations and control of the user interface (UI). In addition, UiPath automation can be used in any Citrix® or remote desktop environment.



## SAP certifications

UiPath makes it easier than ever to test SAP business processes. We are fully certified by SAP for UI and API automation and SAP Solution Manager integration.

- UiPath SAP WinGUI Automation for SAP ERP and SAP S/4HANA has been certified by SAP, allowing you to create reliable and stable test automations for SAP WinGUI. You have full control over test automations and can harness the power of UiPath with advanced activities specifically designed for efficient testing of your SAP processes.
- UiPath API automations for SAP ERP and SAP S/4HANA have also earned SAP certification. The proven integrations enable you to test processes via the SAP Business API (SAP BAPI) with simplicity and ease, helping accelerate your digital transformation and streamline migrations.
- The UiPath Platform has certified integration with SAP Solution Manager, which helps you get more value from your SAP investment by serving as a hub for all test management activities. It also functions as the central information resource for all automation and testing processes. UiPath offers seamless creation of automated test cases across the enterprise, including SAP and non-SAP applications. You can execute test cases, exchange complex test data, and ensure the functionality of Business Process Change Analyzer for automation projects. In addition, accurate reporting with a consolidated view is available.



## 190+ supported technologies

SAP systems are never standalone applications. They require test automation of business processes across the entire enterprise. The UiPath Platform can automate and test more than 190 different UI and API technologies with a single workflow designer that doesn't require programming skills. By combining native integrations with flexible API consumption (via Integration Service or the HTTP request activity) and industry-leading user interface automation capabilities, UiPath Test Suite can test a virtually limitless set of target applications. UiPath uniquely enables SAP automation and testing to support end-to-end scenarios.



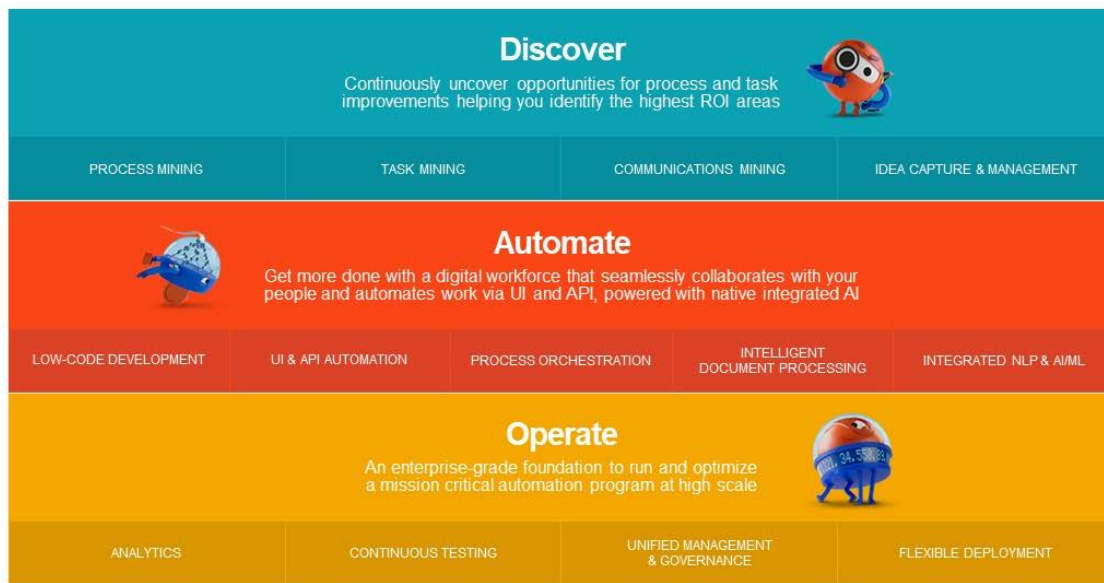
## SAP automation for RPA and testing

Testing and RPA are both essential to creating resilient workflows. With UiPath, you have a single low-code platform that delivers SAP RPA as well as SAP testing.

# UiPath Test Suite is part of a converged automation platform



## The UiPath Business Automation Platform



Your Processes

Your Applications

Systems of record – ERP, CRM, HCM | Communications and Collaboration | Personal Productivity

Your People



**3-5x**

**Automation Development**

**90%**

**Automation Rates**

**3x**

**Release Speed**

**70%**

**Component Reuse**

**30-40%**

**Cost Reduction**



For more details, please visit us at:

[www.uipath.com/solutions/technology/sap-automation](http://www.uipath.com/solutions/technology/sap-automation)

**UiPath** The Foundation of Innovation™