

Continuously test. Deploy with confidence.

Like the term implies, “continuous testing” is testing without interruption—anytime, everywhere, in any form. But most teams still can’t build automated tests that reliably run unattended and adapt to changes—until now. With UiPath Test Suite, you can automate more and accelerate release cycles without changing the way you manage testing. The results? Faster automation, quicker execution, and less maintenance.

Let’s take a closer look at how.

The challenge

... with finite staffing and testing resources

Only 46%

of testing organizations have automated 50% or more of their testing.

Source: PractiTest State of Testing Report 2023

Over 1/3

of testing leaders report facing challenges with applying test automation.

Source: Katalon State of Software Quality Report 2023

How do you adopt more advanced automation without changing testing processes or test management / ALM tools?

The solution: UiPath Test Suite

Production-grade automation for testing



Test Manager

Manage tests



Studio

Automate tests

Automate testing of web and mobile apps, APIs, virtualized desktops, robotic process automation workflows, and more.



Orchestrator

Distribute tests

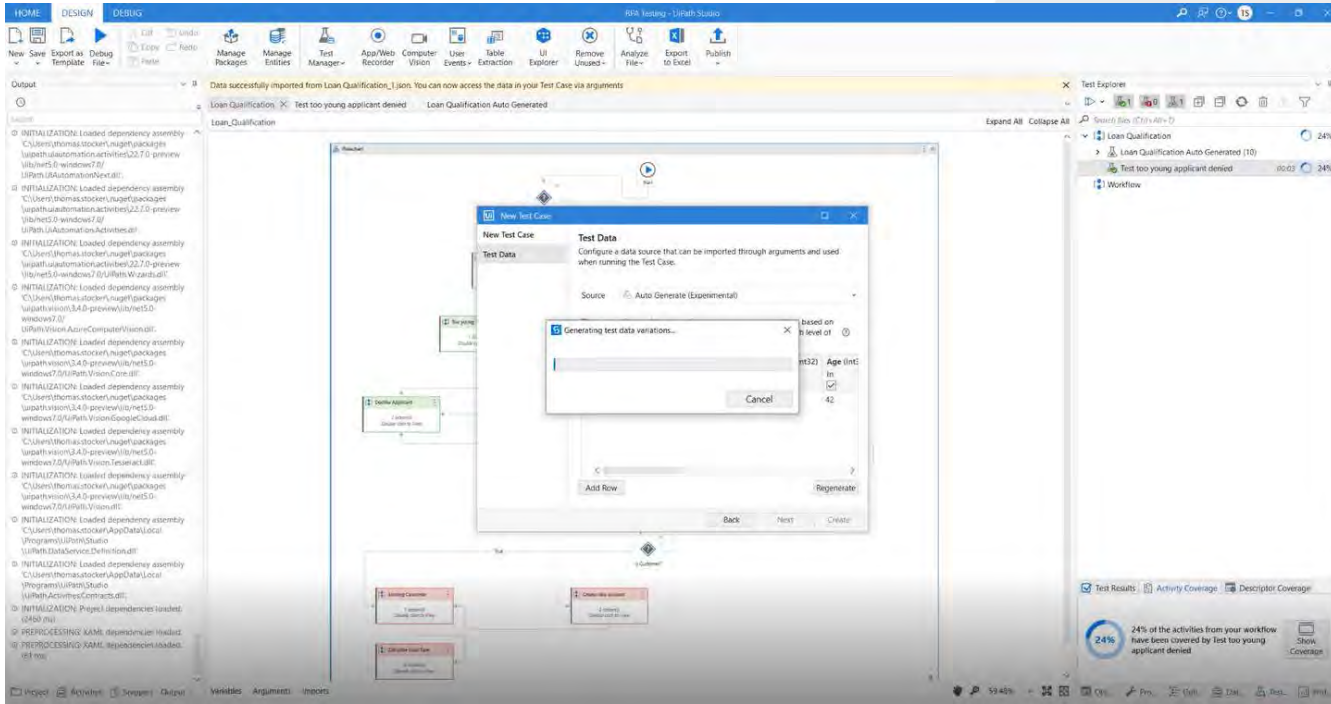


Robots

Execute tests

The features

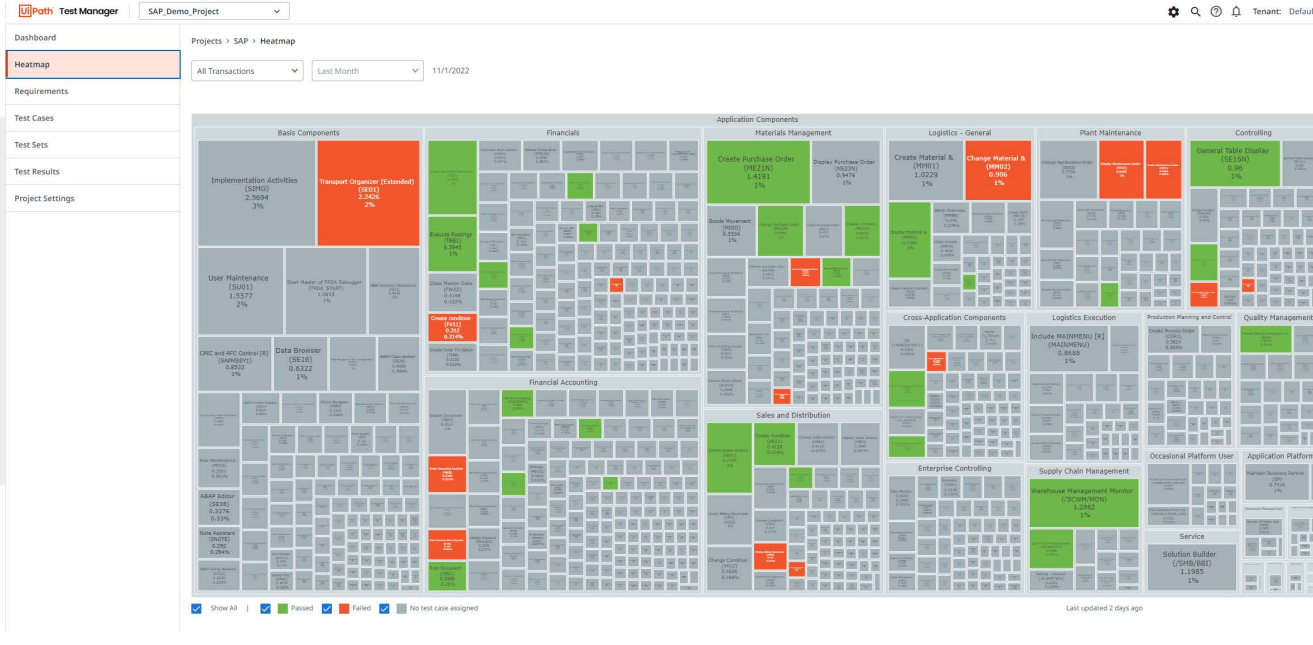
Automatically generate test data for data-driven testing
Speed up test case creation and increase coverage



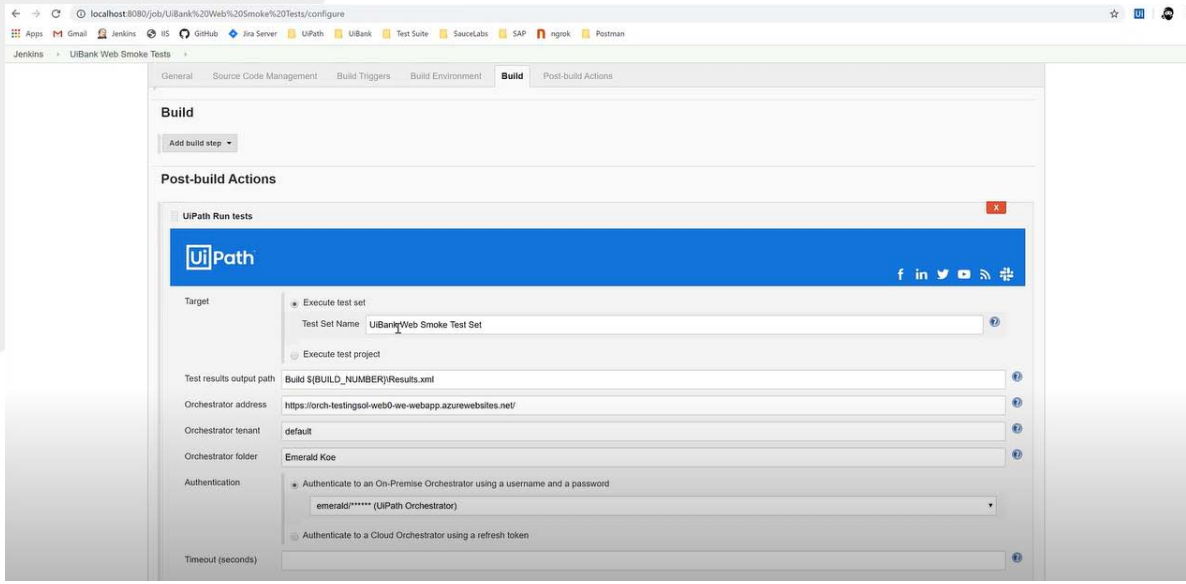
Understand test coverage with the power of Activity Coverage
Unlock information before publishing automations to production



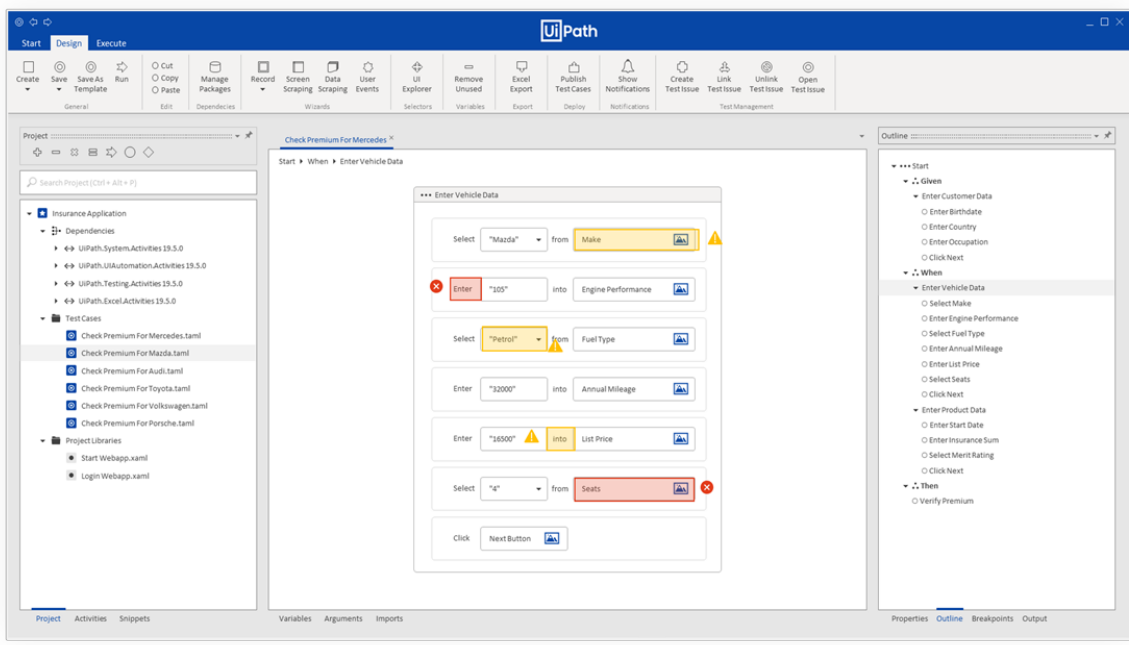
Uncover test automation opportunities with the Heatmap for SAP
Use AI-driven insights to prioritize testing based on actual SAP usage



Avoid application and environment changes breaking your automations in production



Ensure high-quality automations during development



The advantages

 $2x$

more test automation
coverage through
production-grade capabilities

 $3x$

faster test execution
 compared to traditional
 test agents

5x

faster
 automation
 development

75%

faster test case automation
 due to a low-code interface
 and prebuilt components

50%

reduction in automation
maintenance through more
reliable and resilient automations

96%

reduction in
automation
downtime

> 1.5 million

community automation
experts to share knowledge
and best practices

100s

of free prebuilt automations
for managing and validating
environments

Manage testing your way



For organizations with one ALM/test management tool or distributed testing teams using their own tools

1. Connect to Test Manager Hub
 2. Continue using your tools
 3. Execute automated tests
- directly from your tools with no changes to defect reporting



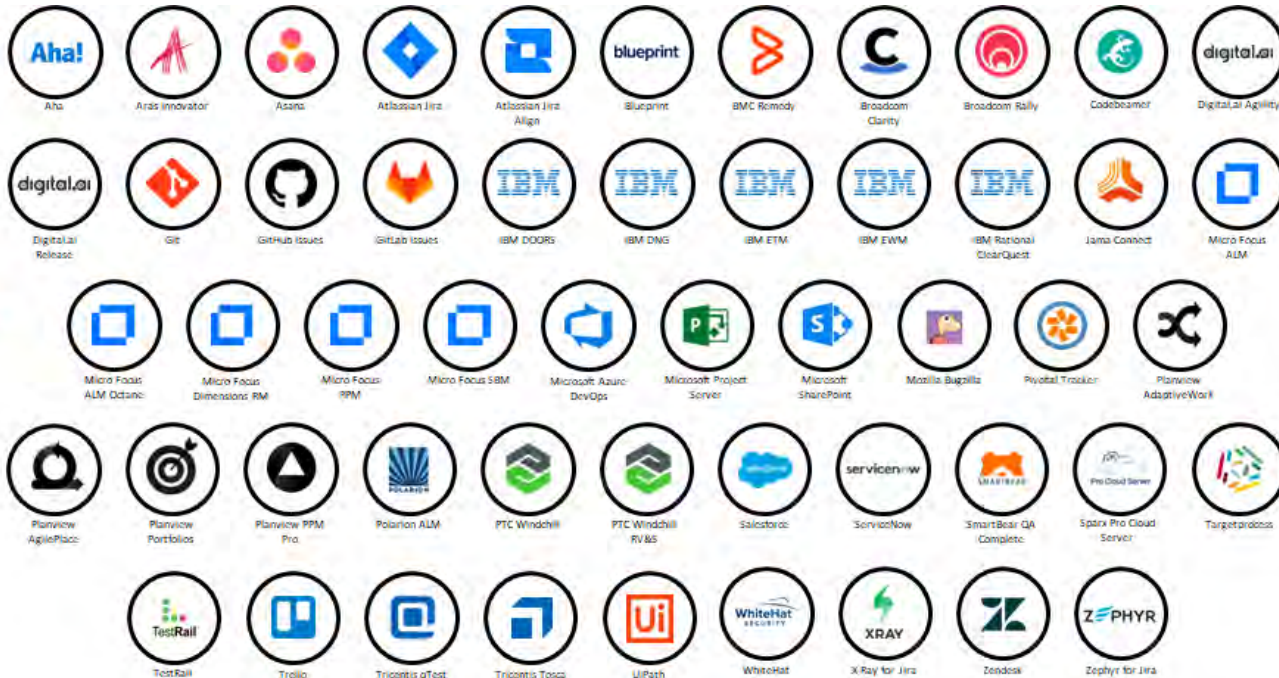
For centralized test teams with multiple ALM/test management tools

1. Connect to Test Manager Hub
2. Use Test Manager as a centralized, aggregated solution
3. Execute automated tests from Test Manager and report defects into your existing tooling



60+

lifecycle solutions
compatible for integration
with Test Manager using
Test Manager Connect



Ready to put UiPath to the *test*?

Download the white paper →

Contact a testing expert →

