

# AI built for your documents

**UiPath Platform Spotlight:  
The June Release Event**



# Event agenda

**Keynote**  
30 min



## Build higher-quality automations, faster than ever, with UiPath Autopilot™ and GenAI

**Craig Dewar**  
VP Product Marketing, UiPath

**AI  
Session**  
20 min

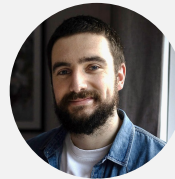


## AI-powered building blocks

**Scott Schoenberger**  
Sr. Manager, Product Management, UiPath

**AI  
Session**  
20 min

## AI built for your documents



**George Barnett**  
Director,  
Product Management,  
UiPath

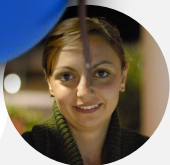


**Betty Kim**  
Director,  
Product Management,  
UiPath

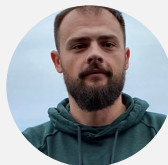
**Autopilot  
breakout**  
20 min



### Autopilot for developers



**Magda Neagu**  
Director  
Product Marketing,  
UiPath



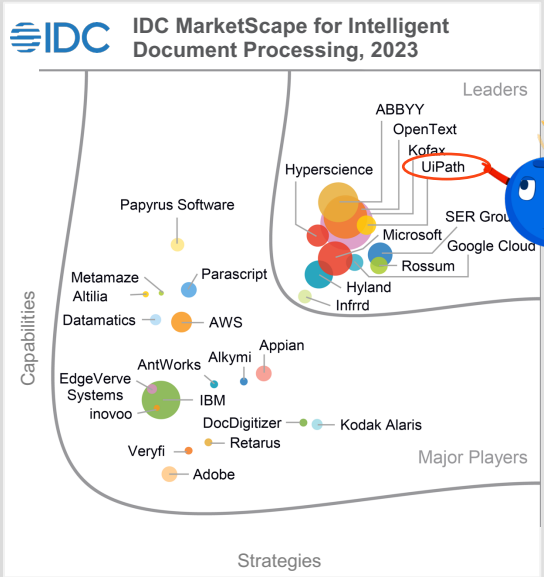
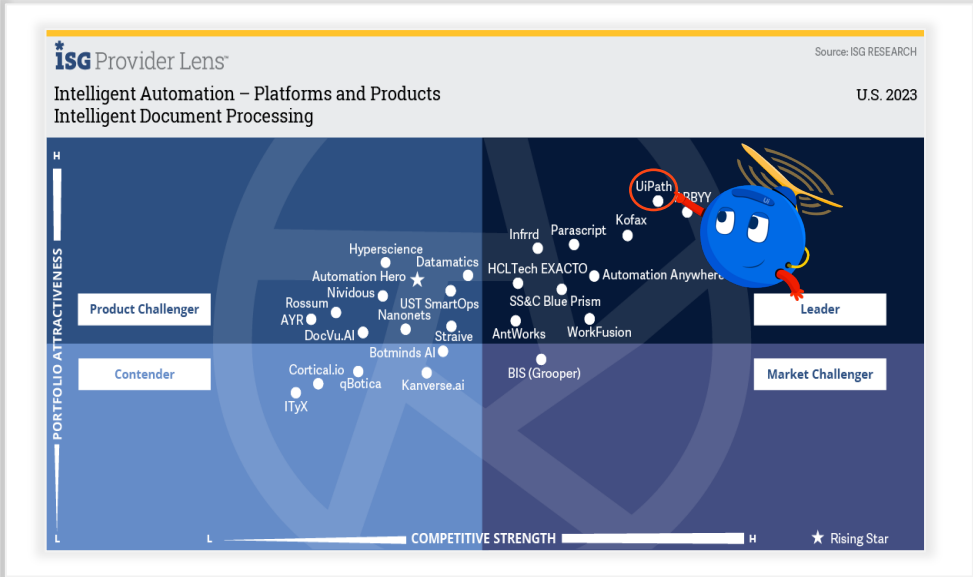
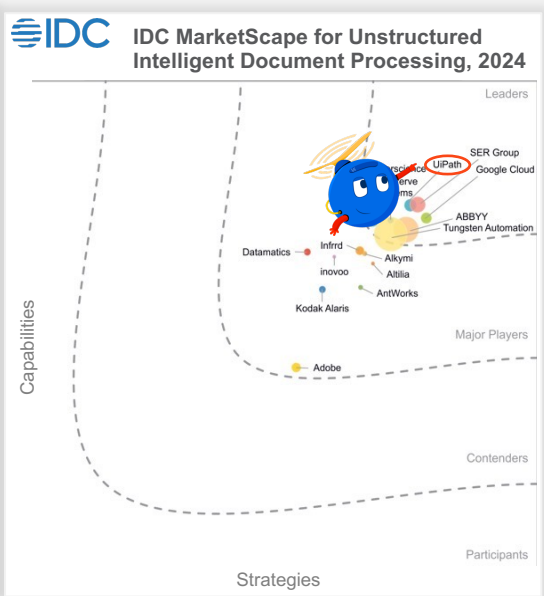
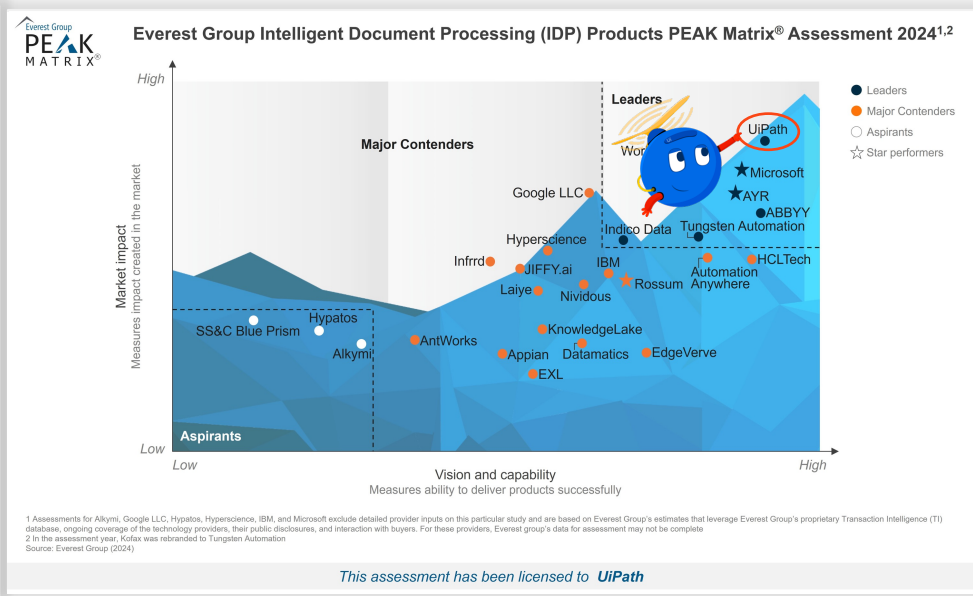
**Alexandru Roman**  
Director  
Product Management,  
UiPath

### Autopilot for testers



**Ingo Phillip**  
Sr. Director  
Product Management  
UiPath

# UiPath is a Leader in IDP



# IDP product strategy: Advancing end-to-end automation



**Higher accuracy  
and automation  
rates**



**Advanced  
unstructured data  
processing**



**Reduced training  
effort**



**Industry-focused  
solutions**



**Enhanced user  
experience**



**State-of-the-art models and open strategy**



**Deployment, scalability, security, quality**



# End-to-end Intelligent Document Processing (IDP) Solution Powered by UiPath

1

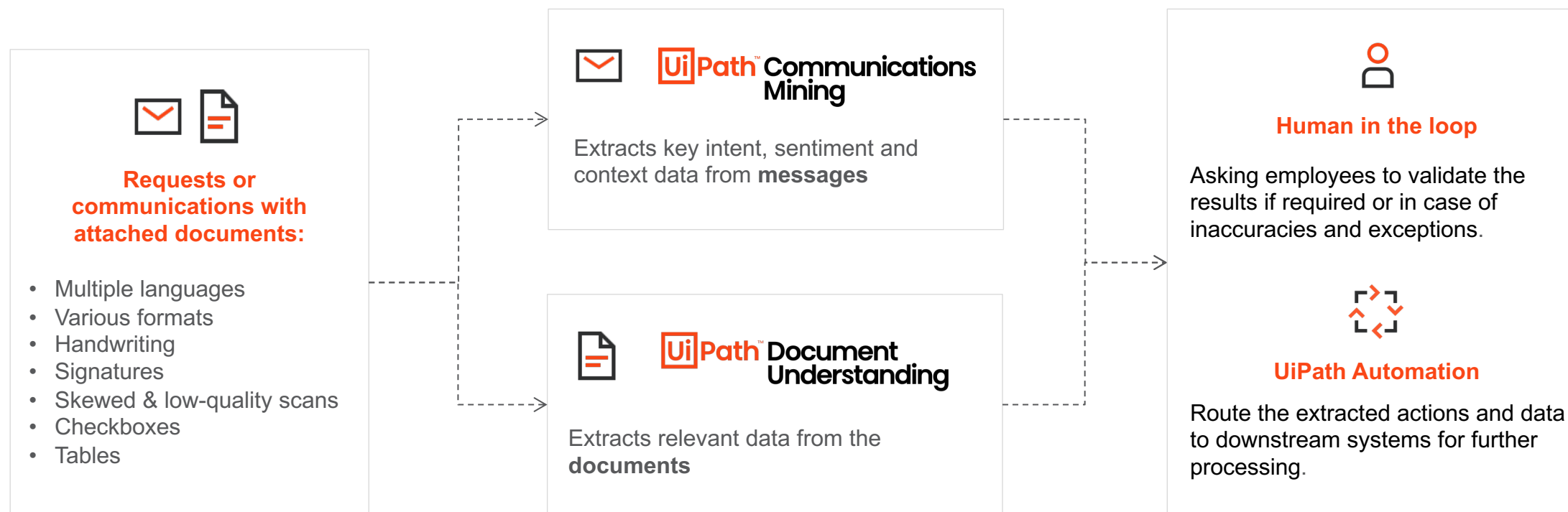
Receive

2

Understand

3

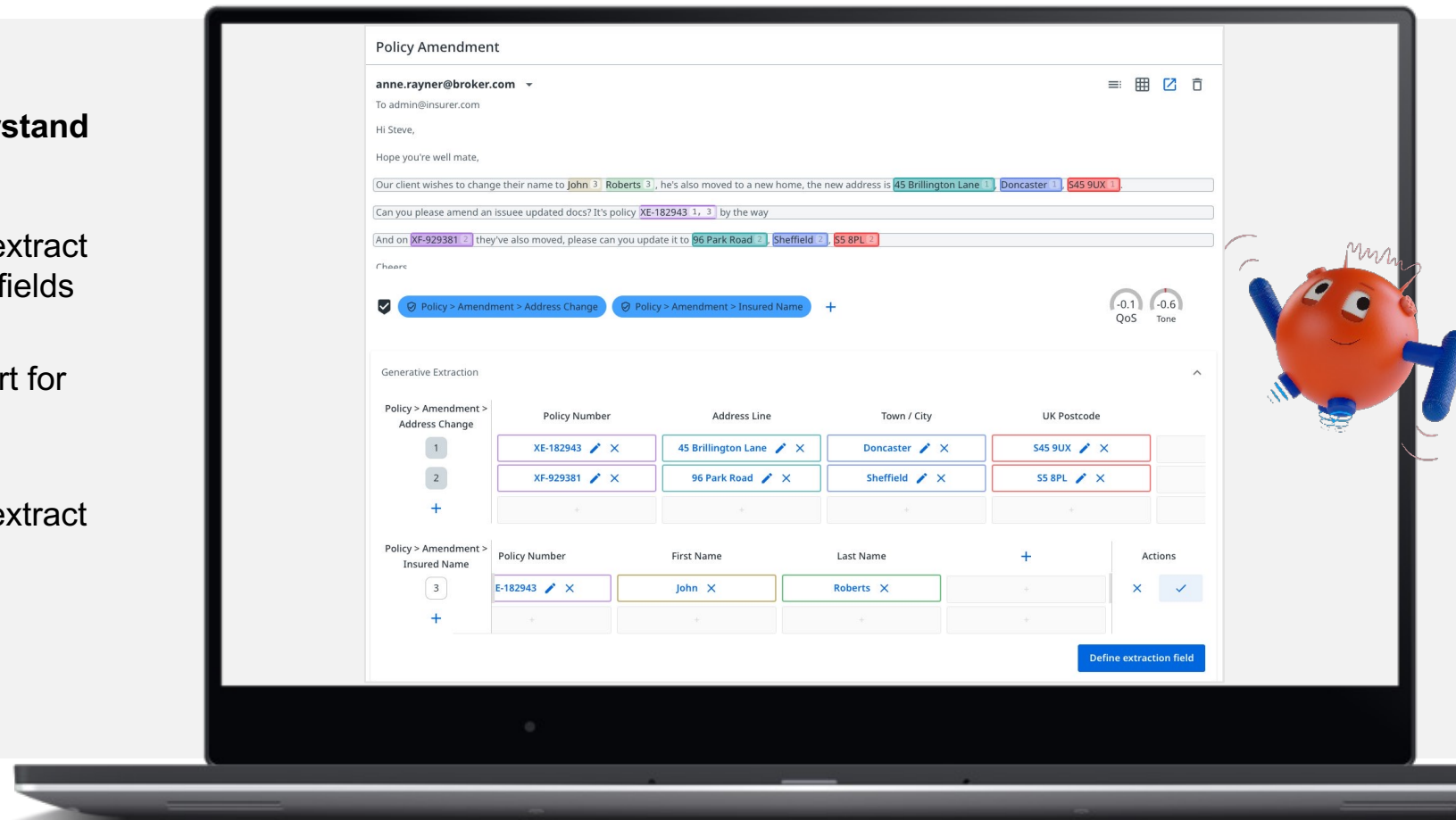
Act



# Generative extraction now powered by UiPath CommPath LLM

Use AI and natural language queries to understand and accurately extract data from a message.

- **Automate more:** increase automation rate, extract complex data, and understand the requests, fields and the relations between them
- **Lower training effort:** 2-3x less training effort for the same levels of accuracy compared to conventional training
- **Fine-tune:** CommPath can be fine-tuned to extract specific fields and drive performance



# UiPath DocPath LLM

A generative large language model specialized for a large and diverse set of enterprise documents.

- **Little to no training time:** up to 10x training effort reduction, with many use cases requiring no annotation
- **More accurate extraction:** 45-76% error rate reduction compared to market leading Generative AI models
- **Complex tables:** 30-65% less errors compared to other IDP and Generative AI vendors



## Phase 1: Use DocPath for out-of-the-box extraction

**General availability now for most of the document types supported out-of-the-box:** Purchase Orders, Receipts, Remittance Advices, Bank Statements, Utility Bills, and 30+ more.

**Coming soon:** Invoices (including Invoices for Japan and China), IRS tax forms (1040x, 941x, 709, 9465 3949a).

## Phase 2: Leverage DocPath for your own document types

**Preview coming soon** in Document Understanding modern projects.

# Train smarter, not harder: Active learning modern experience

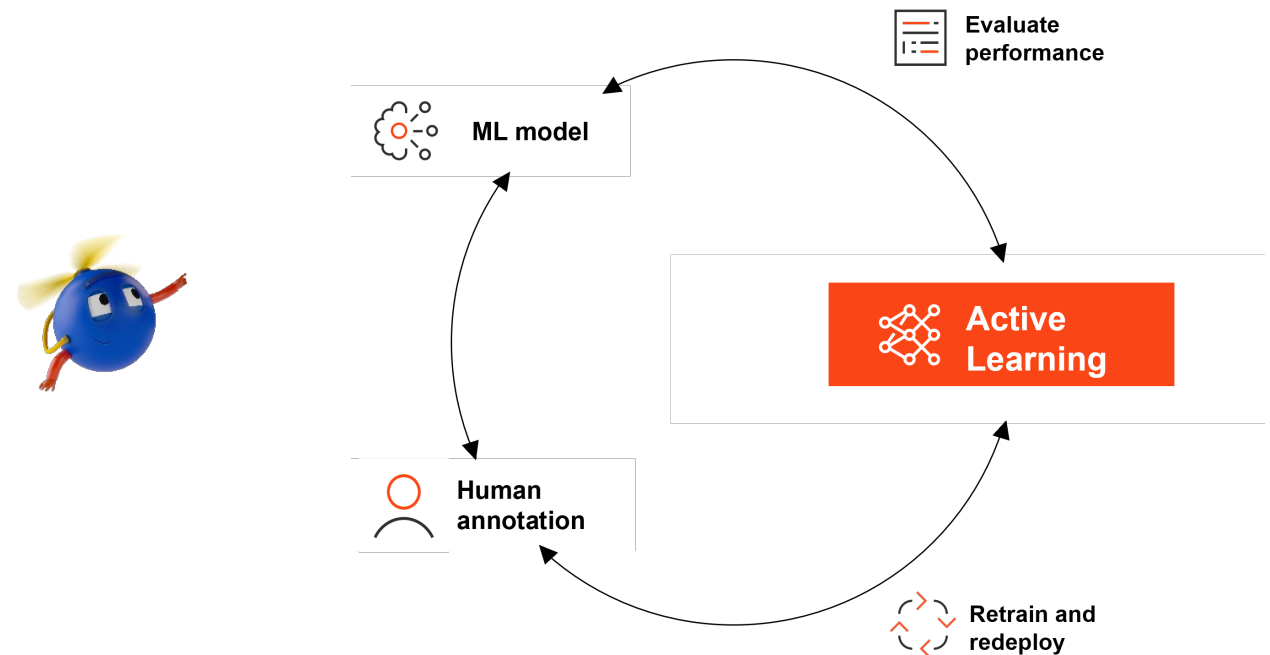
Active learning employs an iterative process between annotators and model to reduce the amount of data required to train an ML model.

- 80% faster model training
- Reduction of data samples for annotation
- Guided training experience (no ML or coding skills needed)
- Built-in model performance data

 **Document Understanding™**

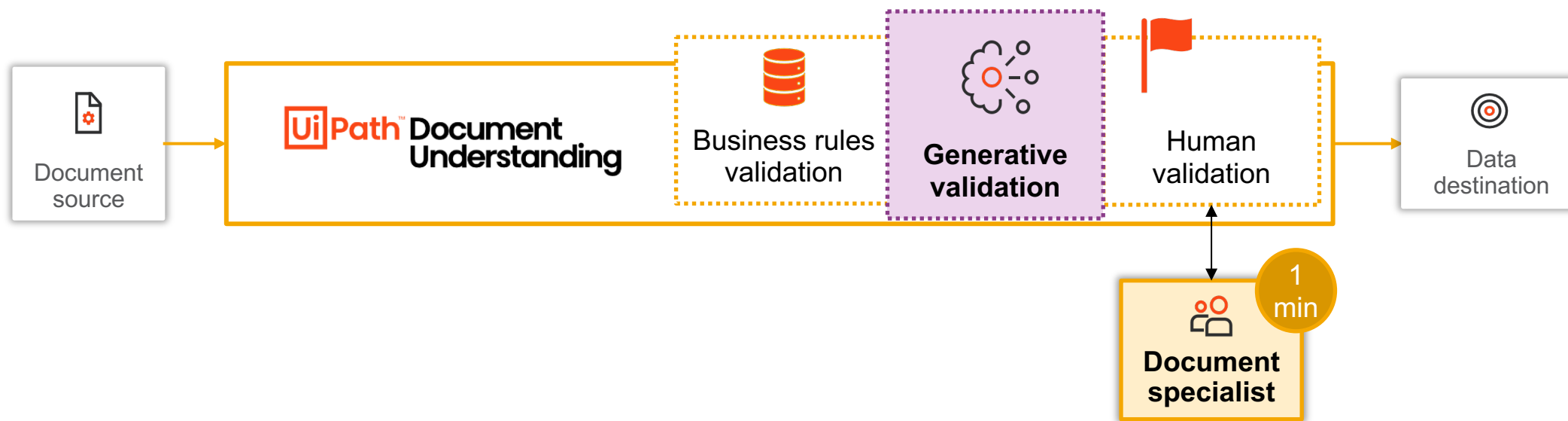
 **Communications Mining™**

How does it work?





# Get a 'second opinion' on the extracted data from Generative AI to drive higher efficiency



**100%  
manual**

6 min x 1M docs = 100,000 hours

**If 50%  
human verified**

1 min x 500K = ~8000 hours  
**~91% reduction**

**If 25% more  
validated with  
GenAI**

1 min x 250K = ~4,167 hours  
**~96% reduction**

# Revamped Validation Station coming soon

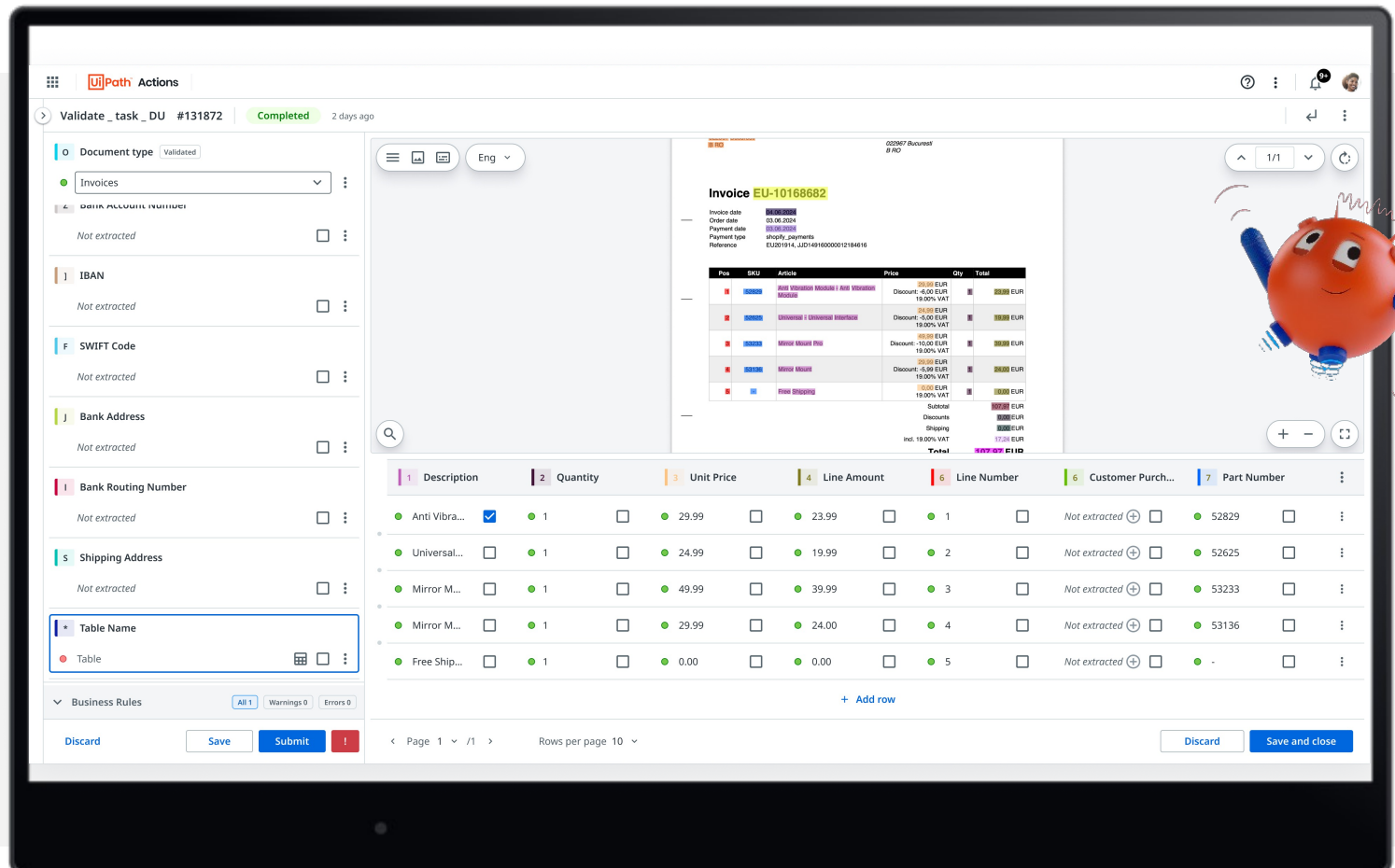
**Customizable to fit your unique business requirements, it will provide an optimized way to review the data – to let the users focus on what's important and boost their productivity.**

- Unified human validation experience in Document Understanding and Communications Mining
- Simple and user-friendly yet advanced data review options
- Enhanced verification and business rules within Validation Station

Timeline: July – October 2024

**UiPath** Document Understanding™

**UiPath** Communications Mining™



# Next – choose your Autopilot session to join!

**Keynote**  
30 min



**Build higher-quality automations, faster than ever, with UiPath Autopilot™ and GenAI**

**Craig Dewar**  
VP Product Marketing, UiPath

**AI  
Session**  
20 min

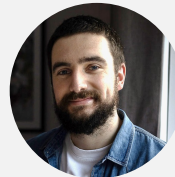


**AI-powered building blocks**

**Scott Schoenberger**  
Sr. Manager, Product Management, UiPath

**AI  
Session**  
20 min

**AI built for your documents**



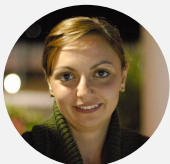
**George Barnett**  
Director,  
Product Management,  
UiPath



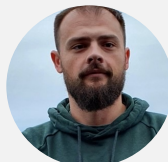
**Betty Kim**  
Director,  
Product Management,  
UiPath

**Autopilot  
breakouts**  
20 min

**Autopilot for developers**



**Magda Neagu**  
Director  
Product Marketing,  
UiPath



**Alexandru Roman**  
Director  
Product Management,  
UiPath

**Autopilot for testers**



**Ingo Phillip**  
Sr. Director  
Product Management  
UiPath

