

Infant Sling for Croozer Kid for 1

Infant Sling for Croozer Kid for 2

OWNER'S MANUAL

ENGLISH



BabysitzKid15-ENG-11-14

124010115

CROOZER

www.croozer.com

IMPRINT

Published by: Zwei plus zwei GmbH
Oskar-Jäger-Str. 125
D-50825 Cologne
Germany

Copyright © 2014 Zwei plus zwei GmbH. All rights reserved. No part of this manual may be reproduced or transmitted in any form for any purpose other than the purchaser's personal use.

Additional manuals and instructions on the use of this vehicle and its accessories can be ordered from Zwei plus zwei GmbH or downloaded from the website www.croozer.eu. Every effort has been made to ensure the accuracy of this manual. However, if you do find an error, we would appreciate hearing about it so that we can correct it.

Planning, text, graphic design and editing:
W. Piontek, www.technik-transparent.de

Photos: W. Piontek and Zwei plus zwei GmbH

Table of Contents

Description	2
What's what?	2
Who can use the Infant Sling?	2
How should the Infant Sling be used?	2
In what cases is the use of the Infant Sling strictly prohibited?	2
Safety Guidelines	3
Symbols and warnings	3
Orientation and wording	3
Read and observe this manual.	3
Legal requirements for transporting infants	3
Correct installation	3
Buckle up!	3
Adult supervision	3
Suitable accessories	3
Folding the Croozer Kid	3
Installing the Infant Sling to the Croozer Kid	4
Unpacking the Infant Sling	4
Installing the Infant Sling	4
Pulling the Infant Sling taut.	9
Transporting Your Infant Safely	10
Fastening and unfastening the safety harness.	10
Adjusting the safety harness	11
Tips: Riding with Your Infant.	12
Cleaning, Storage and Disposal	12
Technical Data	12
Warranty Conditions	12
Servicing Information.	12
Additional Accessories for Transporting Infants	13

Description

Description

What's what?



Who can use the Infant Sling?

The Infant Sling is intended for use with infants between approx. four weeks and 10 months of age who are unable to sit upright unassisted. The Infant Sling cannot be used with infants with a height of more than 29.5 inches (75 cm) or a weight of more than 22 lbs (10 kg).

How should the Infant Sling be used?

This Infant Sling is intended for private use for carrying infants and can only be used with the child trailers Croozer Kid for 1 and Croozer Kid for 2. The instructions and safety guidelines provided in this manual must be followed at all times. The Infant Sling must be properly installed to professional standards.

The Croozer Kid for 1 can only be used with one Infant Sling. The Croozer Kid for 2 can be used with two Infant Slings. It is also possible to use the Croozer Kid for 2 with one Infant Sling and a second child who is able to sit upright unassisted. The Infant Sling can only be used with the Croozer Kid on smooth, well-surfaced roads and paths.

In what cases is the use of the Infant Sling strictly prohibited?

The Infant Sling may not be used in other Croozer models or child trailers from other manufacturers because these other trailers lack the required attachment sites. Never transport animals or cargo together with children. The use of the Infant Sling in the following situations is strictly prohibited: riding on unsurfaced roads or paths, commercial use, overloading or exceeding the maximum weight and height of the infant, the use of an improperly installed or damaged/defective Infant Sling or use in a child trailer that has been involved in an accident. Furthermore, certain children may not be permitted to use the Infant Sling owing to a medical condition. Zwei plus zwei GmbH will not be liable for any damages resulting from non-compliance with these requirements.

Safety Guidelines

Symbols and warnings



DANGER!

DANGER indicates a hazardous situation which, if not avoided, will result in death or serious injury.



WARNING!

WARNING indicates a hazardous situation which, if not avoided, could result in death or serious injury.



CAUTION!

CAUTION indicates a hazardous situation which, if not avoided, could result in minor or moderate injury.

NOTICE

NOTICE indicates a situation which, if not avoided, could result in damage to the Infant Sling or the Croozer Kid or the environment.

Tip: *In this manual, “Tip” indicates helpful advice about the use or maintenance of the Infant Sling.*

Orientation and wording

The terms right and left in this manual always refer to the viewer's perspective (when facing the Croozer's passenger seats from the front). Some of the photos and graphics used in this manual only show the Croozer Kid for 2. However, the descriptions also apply to the Croozer Kid for 1.

The instructions given in the following chapters apply to the 2015, 2014 and 2010-2013 models of the Croozer Kid and are marked as follows:

Model 2015 only	Instructions for the 2015 model Croozer Kid.
Model 2014 only	Instructions for the 2014 model Croozer Kid.
Models 2014 and 2015	Instructions for the 2014 and 2015 Croozer Kid models.
Models 2010 to 2013	Instructions for the 2010 through 2013 Croozer Kid models.

The model year of your Croozer can be found at www.croozer.com under “Service”.

Read and observe this manual

This manual contains information that is extremely important for the safe transport of your infant. Therefore, it is essential that you read the entire manual carefully and follow the instructions closely. If you should experience difficulties understanding any of the information or

instructions, please contact your Croozer dealer. Keep this manual handy at all times for future reference. If you loan or sell your Infant Sling, pass on this manual to the new user. It is also vitally important that you read and observe the instructions provided in the manual of the child trailer.

Legal requirements for transporting infants

Be sure to observe all laws that apply to the transport of children in child trailers. Some countries prohibit the transport of children in child trailers or prescribe certain age limits. In case of doubt, be sure to familiarise yourself with the legal requirements of the country in which you plan to use the Infant Sling with the Croozer Kid.

Correct installation

The Infant Sling must be properly installed to professional standards. Follow the instructions on correct attachment in the section “Installing the Infant Sling to the Croozer Kid” on page 3. If you should experience difficulties with the installation, please contact your Croozer dealer. An improperly installed Infant Sling could become loose or fall off while riding, resulting in accidents with serious injury or death.

Buckle up!

Infants riding in the Infant Sling of a Croozer Kid must be strapped into the safety harnesses at all times. Follow the instructions provided in this manual for fastening the safety harnesses correctly. Infants who are not properly secured in a safety harness could sustain life-threatening injuries in the case of accidents or sudden braking.

Adult supervision

Never leave your child in the Infant Sling unattended, not even briefly! In your absence, hazardous, unforeseen situations could arise, including accidents with serious injury or death. It is the adult's responsibility to ensure that the ventilation and temperature in the trailer is comfortable for the passengers at all times. Check on your infant frequently to make sure he or she is safe and comfortable in the Infant Sling.

Suitable accessories

Use only accessories that have been recommended and approved by Zwei plus zwei GmbH. These are the only accessories that can be used safely with the Infant Sling and the Croozer Kid. When in doubt, consult a Croozer dealer. Zwei plus zwei GmbH cannot be held responsible for any damage resulting from the use of non-approved accessories.

Folding the Croozer Kid

For transport, the Croozer Kid can be folded to a compact size with the Infant Sling installed. After unfolding, check all attachment sites of the Infant Sling and all locking mechanisms of the Croozer Kid. An improperly installed Infant Sling could become loose or fall off while riding, resulting in accidents with serious injury or death. Never attempt to fold the Croozer Kid with an infant in the Infant Sling. As a result, the infant could suffer serious injuries.

Installing the Infant Sling to the Croozer Kid

Unpacking the Infant Sling

1. In the plastic packaging, you will find the Infant Sling with integrated crotch strap (1) and chest pad (2), two separate shoulder pads (3), two lap-belt adapters (4) for use with the 2010 through 2014 Croozer Kid models and this manual.
2. Remove all plastic packaging from the Infant Sling. Recycle all packaging material if possible.



WARNING!

Plastic bags and packaging materials can be dangerous! To avoid danger of suffocation, keep plastic bags and packaging away from babies and children. Babies and children could pull plastic bags or packaging over their heads and suffocate.

Installing the Infant Sling



WARNING!

The Infant Sling must be properly installed to professional standards! An improperly installed Infant Sling could cause accidents with serious injury or death. If you should experience difficulties understanding or performing the installation, please contact your Croozer dealer.

Before using the Infant Sling to transport an infant between one and ten months of age in the Croozer Kid, the Infant Sling must be properly installed. This accessory is specially designed for use with the 2015 models of the Croozer Kid for 1 and Croozer Kid for 2. With the lap-belt adapters (included), the Infant Sling can also be used with 2010 through 2014 models. The Infant Sling has seven attachment points. It is mounted in four steps.

- **Step A:** Preparing the seat of the Croozer Kid for the attachment of the Infant Sling
- **Step B:** Attaching the Infant Sling to the seat of the Croozer Kid
- **Step C:** Attaching the Infant Sling to the top of the seatback
- **Step D:** Attaching the Infant Sling to the front of the frame

The infant is buckled into the Infant Sling using an integrated crotch strap with adjustable chest pad, together with the shoulder harnesses and parts of the lap belts (2015 model) from the seat of the Croozer Kid. The lap-belt adapters (included) must be used with 2010 through 2014 models of the Croozer Kid because the lap belts of these models cannot be detached from the other harnesses. The removable components of the Croozer Kid safety-harness system – the head pad and chest pad (only 2010 through 2014 models) – must be removed and stored for later use.



Step A: Preparing the seat of the Croozer Kid for the attachment of the Infant Sling

1. Remove the head pad (1).
2. Release the shoulder straps (2) from the Velcro straps of the chest pad (3) by opening the Velcro straps (4).



Model
2015

3. Open the two side buckles (5) of the lap belts.



4. Press the button (6) on the centre buckle in order to release the clips (7) attached to the shoulder straps and lap belts.



5. Allow the crotch strap (8) with the chest pad (9) to hang down towards the foot area.

Installing the Infant Sling to the Croozer Kid

- Model 2010 to 2014**
1. Remove the head pad (1).
 2. Open the two buckles (2) of the shoulder straps.
 3. Open the two side buckles (3) of the lap belts.
 4. Open the buckle (4) of the crotch strap.
 5. Remove the chest pad (5) and store it for future use.



6. Pull the end of the shoulder strap (6) out of the Ladder-loc adjuster (7) and out of the shoulder-strap buckle (2).
7. Repeat steps 8 and 9 with the second shoulder strap.

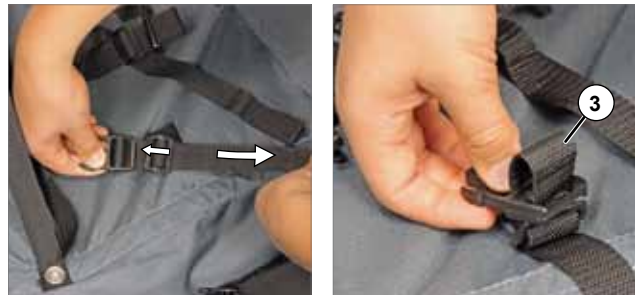


Model 2015
On the seat of the 2015 model Croozer Kid, there are three loops (1 and 2) that are used for the attachment of the three rear straps of the Infant Sling.



Model 2014
On the seat of the 2014 model Croozer Kid, there are only two loops (1) that are used for the attachment of the two rear straps of the Infant Sling. The crotch strap must be shortened to such an extent that the remaining section of strap forms a small loop (3) that can be used for the attachment of the middle strap of the Infant Sling.

Models 2010 to 2013
The 2010 through 2013 models have no loops for the attachment of the Infant Sling. Instead, the lap belts and crotch strap must be shortened to such an extent that the remaining sections of straps form small loops (3) that can be used for the attachment of the three rear straps of the Infant Sling.



Step B: Attaching the Infant Sling to the seat of the Croozer Kid

1. Place the Infant Sling on the seat of the Croozer Kid (if installing to a two-seater, preferably on the right side) and fold the upper part of the Infant Sling forward so that it's easier to reach the attachment straps on the back of the Infant Sling.



Model
2015

2. Feed the middle attachment strap of the Infant Sling with the buckle (4) through the loop (5) on the crotch strap of the Croozer Kid seat. Insert the male end of the buckle (4) into the female end (6) on the Infant Sling. You should hear a click and be able to see that the buckle is securely fastened.



Models
2010
to
2014

2. Feed the middle attachment strap of the Infant Sling with the buckle (4) through the loop (5) formed by the crotch strap of the Croozer Kid seat. Insert the male end of the buckle (4) into the female end (6) on the Infant Sling. You should hear a click and be able to see that the buckle is securely fastened.



Models
2014
and
2015

3. Feed the right attachment strap of the Infant Sling with the buckle (7) through the loop (8) to the right of the lap belt on the left side of the seat of the Croozer Kid. Insert the male end of the buckle (7) into the female end (9) on the Infant Sling. You should hear a click and be able to see that the buckle is securely fastened.



Models
2010
to
2013

3. Feed the right attachment strap of the Infant Sling with the buckle (7) through the loop (8) formed by the right lap belt. Insert the male end of the buckle (7) into the female end (9) on the Infant Sling. You should hear a click and be able to see that the buckle is securely fastened.



4. Attach the left attachment strap of the Infant Sling in the same manner.



WARNING!

Check all three buckles to make sure that they are securely fastened. Improper attachment could result in serious injury or death to the occupant in the event of an accident.

5. Tighten all three attachment straps.



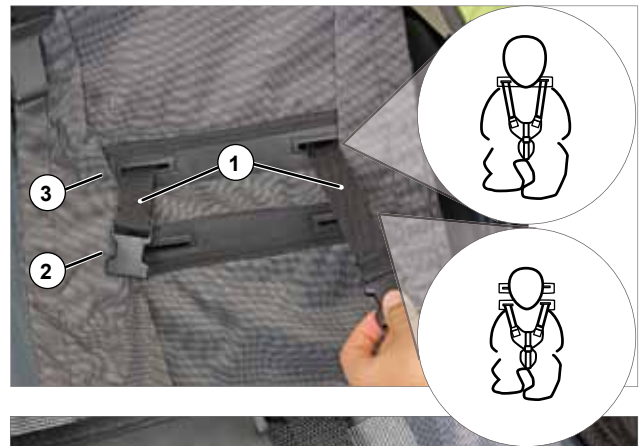
Installing the Infant Sling to the Croozer Kid

Step C: Attaching the Infant Sling to the top of the seatback

1. Feed the two shoulder straps (1) from the seat of the Croozer Kid through the lower (2) or upper (3) slits in the Infant Sling, depending on the size of the infant, and pull the straps all the way through.

Modell 2015 For the 2015 models, the shoulder straps will be inserted through the slits with the attached clips and buckles.

Models 2010 to 2014 For the 2010 through 2014 models, the loose ends of the shoulder straps (no clips or buckles) will be inserted through the slits..



2. Pull the two shoulder pads (4) over the shoulder straps.

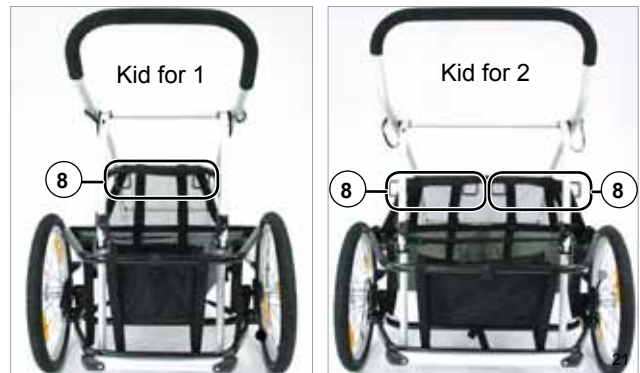


Models 2010 to 2014 3. For each shoulder strap: pull the end of the strap (5) through the elongated slot in the clip (6) of the lap-belt adapter and feed it back through the Ladderloc adjuster (7).



Attachment rings (8) for the installation of the Infant Sling are located at the rear of the Croozer Kid on the upper frame tube to which the seat is attached. The Croozer Kid for 1 has two attachment rings, and the Croozer Kid for 2 has four attachment rings for the installation of two Infant Slings.

4. Pull the two upper attachment straps with the Infant Sling hooks (9) up and over the seatback.
5. Insert the Infant Sling hook (9) through the attachment ring (10) behind the seatback of the Croozer Kid; then press the hook upwards until you see and hear it snap into place on the ring.
6. Attach the second Infant Sling hook in the same manner.
7. Check the attachment of both Infant Sling hooks by putting gentle pressure on the Infant Sling in the Croozer.



WARNING!
Improper attachment could result in serious injury or death to the occupant in the event of an accident.



Step D: Attaching the Infant Sling to the front of the frame

1. Pull the two front attachment straps with the Infant Sling hooks (1) towards the front of the Croozer.
2. Hang one of the Infant Sling hooks (1) over the front frame tube (2).
3. Attach the second Infant Sling hook to the front frame tube in the same manner.



Pulling the Infant Sling taut

The Infant Sling must be pulled taut for the comfort and safety of the infant.

1. Check the three attachment straps (3) under the Infant Sling once again. The straps should be tight enough that the Infant Sling can only be lifted slightly in the middle. If necessary, tighten the three attachment straps.
2. Pull on the ends of the two front attachment straps (4) to tighten them until the Infant Sling is sufficiently taut.
3. Check that all Infant Sling hooks are securely snapped into place by putting gentle pressure on the Infant Sling in the Croozer.



WARNING!

The Infant Sling must be pulled taut. When pressure is applied, it should only yield slightly. If the Infant Sling is too loose, the infant could be tossed around in extreme situations, which could lead to serious injury or death.

4. Adjust the length of all straps to the size of the infant. See page 11.

Transporting Your Infant Safely

Fastening and unfastening the safety harness

The 5-point safety harness of the Infant Sling uses the two shoulder straps and lap belts (1 and 2) of the Croozer Kid safety-harness system and its own crotch strap (3), which is attached to the buckle (6) on the chest pad (4). On each side, the shoulder strap (1) and lap belt (2) are fastened to a clip (2) that is inserted into the centre buckle (6). The pads on the shoulder straps provide additional comfort.



WARNING!

When riding in the Infant Sling, your child must be strapped securely into the safety harness at all times! Otherwise, in dangerous situations, the infant could fall from the infant sling, resulting in serious injury or death.



WARNING!

Failure to adjust the straps of the safety harness properly or to fasten the buckles correctly could result in accidents with serious injury or death.

1. Make sure that the harnesses are unbuckled; then place the infant in the Infant Sling.
2. Place the crotch strap (3) between the child's legs with the attached chest pad (4) resting on the child's upper body.
3. Place both shoulder straps (1) over the infant's shoulders.
4. Feed the shoulder straps (1) through the loops (7) on the chest pad, and pull the straps completely through.
5. On each side, connect the two parts (8) of the lap belt by inserting the male end of the lap belt attached to the Infant Sling into the female end of the lap belt attached to the clip of the shoulder strap.
6. On each side, insert the clip (5) of the shoulder strap and lap belt into the centre buckle (6) on the chest pad. You should hear a click and be able to see that the clips are securely fastened.
7. Then adjust the lengths of the shoulder straps, lap belts and crotch strap so that they hold your infant snugly and comfortably. For more information, see page 11.
8. To release the straps, press the button (9) of the centre buckle. Both clips (5) attached to the shoulder straps and lap belts will be released from the buckle. Follow these instructions in the reverse order to remove the infant from the Infant Sling.



Adjusting the safety harness

1. Make sure that the harnesses are unbuckled; then place the infant in the Infant Sling.
2. Fasten the harness as described on page 10.
3. If you notice that the shoulder harnesses are too far above or below the top of the infant's shoulders, then reinsert the straps through the appropriate slots in the Infant Sling. (See Step C, page 8).
4. Adjust the lengths of the shoulder straps using the Ladderloc adjusters (2).
5. Shorten the lap belts by pulling on the ends (5) of the lap belts. Lengthen them by pushing on the side of the clip (6) and pulling on the respective lap belt (7).
6. You can also shorten or lengthen the lap belts using the Ladderloc adjusters (3) (under the lap-belt pads).
7. Adjust the length of crotch strap using the Ladderloc adjuster (4).
8. Adjust the tension of all straps so that the child is held snugly but comfortably in the harness.

Tip: The harness should be snug, with just barely enough room for your open, flat hand between the straps and the child.



WARNING!

The shoulder straps must fit comfortably yet snugly over the infant's shoulders to ensure that the infant is held securely in the Infant Sling. If the straps are too loose, the safety harness may not be able to hold the infant securely, and in the event of an accident the infant could slip out, resulting in serious injury or death. Straps that are too tight can cause discomfort to the infant's shoulders.



WARNING!

Failure to adjust the straps of the safety harness properly or to fasten the buckles correctly could result in accidents with serious injury or death.

Tips: Riding with Your Infant

Tips: Riding with Your Infant

Be cautious, patient and attentive when riding with your infant. The first few trips should be short and easy, to give your infant time to get used to riding in the Infant Sling.

Dress passengers appropriately and check frequently to make sure they are comfortable in the trailer, with adequate ventilation. Under the rain cover, the passenger compartment can become warm more quickly than otherwise, especially in direct sunlight. However, in colder weather, infants sitting inactively in the trailer will feel colder and need more insulation than the person who is pedalling the towing bicycle. Therefore, in colder temperatures dress children in warm clothing or use a blanket. You can also use the Baby Winter Bunting Bag that is available as a Croozer accessory.

Keep your passengers' needs and well-being in mind: always take along small toys so that your infant does not get bored. And when planning longer trips, keep in mind that your infant will require frequent breaks. Be attentive to your child at all times, especially when riding over bumpy surfaces. In these situations, ride slowly and cautiously.

After the infant is able to sit upright unassisted and no longer fits in the Infant Sling, you can use the Croozer Baby Supporter, which is available as an accessory from Croozer dealers.

Cleaning, Storage and Disposal

The Infant Sling is easy to clean and maintain. No special care or maintenance is required. A cloth or sponge can be used with a soap solution or a mild household detergent to remove light soiling. For cases of heavy soiling, remove the Infant Sling and wash it by hand in lukewarm water. Never wash the Infant Sling in a washing machine, and never use solvents or mineral spirits on the Infant Sling.

Store the Infant Sling in a dry and well-ventilated area in order to prevent mildew and mould growth. If you will not be using your Infant Sling for an extended period of time, then store it dry and enclosed in packaging.

The Infant Sling is extremely durable. However, it will eventually reach the end of its service life. If the Infant Sling has been involved in an accident, its further use is prohibited. Be sure to dispose of the Infant Sling properly.

Technical Data

Dimensions W x H x D	7.5 x 29 x 6 inch (19 x 74 x 16 cm)
Age Range	1 to 10 months
Maximum Height of Infant	29.5 inch (75 cm)
Maximum Weight of Infant	22 lbs (10 kg)
For Use with Trailer Models	2015 models: Croozer Kid for 1 Croozer Kid for 2
	Only with lap-belt adapters (included): 2010 through 2014 models Croozer Kid for 1 Croozer Kid for 2

Warranty Conditions

The statutory warranty in the country or state of purchase has unlimited application to the above-mentioned products. This warranty only applies to defects inherent to the material supplied and does not cover damage due to improper use, use of force or normal wear and tear. The period of statutory warranty depends on the law of the country in question.

Servicing Information

If the Infant Sling shows any sign of damage or defects, contact a Croozer dealer, who will forward your claim to us. For such cases, be sure to keep your original sales receipt.

Additional Accessories for Transporting Infants

Baby Winter Bunting Bag

For babies, dark grey outer shell, light grey cotton-fleece liner, ideal for Infant Sling



Baby Supporter

For small children aged approx. 10 to 24 months, who have grown out of the Infant Sling, height adjustable, 2-part



Sun Cover

A practical sunshade for your child in the Croozer Kid, colour



Rain Cover

For one-seater or two-seater



CONTACT

Zwei plus zwei GmbH
Oskar-Jäger-Straße 125
D-50825 Cologne
Germany
info@croozer.com
www.croozer.com

The logo for CROOZER, featuring the word "CROOZER" in a bold, italicized, sans-serif font. The letters are black with a thick white outline, giving it a three-dimensional, blocky appearance.