

**DRAGO DURABILITY**

***NO OTHER CORN HEAD WORKS LIKE A  
DRAGO OR IS BUILT TO LAST LIKE ONE.***



***DRAGO***



**DRAGO CORN HEADS  
AREN'T JUST BUILT TO  
HARVEST MORE, THEY'RE  
BUILT TO LAST LONGER.**

## **QUALITY PARTS AND PRECISION ENGINEERING ADD YEARS OF PRODUCTIVITY AND SAVINGS.**

*Drago corn heads are known for their harvest efficiency. Innovations and features, including self-adjusting deck plates, extended gathering chains, longer knife rollers and more, make Drago the most productive brand in the field.*

*And a commitment to quality and innovation make Drago one of the most durable.*

*Performance and reliability is so important that Olimac – the global manufacturer of Drago corn heads – builds and tests every mechanized part within its own plant to assure its exceptional standard.*

*No other brand engineers more precision or dependability into its parts and components.*

---

**“WE OWNED A SERIES II FOR FIVE YEARS WITHOUT HAVING TO CHANGE ANY KNIFE ROLLS, CHAINS OR SPROCKETS.” – JUSTIN HOFFMAN, DRAGO SERIES II OWNER**

---

### **GEARBOXES BUILT FOR THE JOB**

*Nothing says durability like a Drago gearbox. Along with its exceptionally robust bull gear are the industry's first spiral-bevel gears. Designed for high speed and high-torque power, Drago's spiral gears engage more than one set of teeth for a significantly stronger load bearing surface and more efficient load transmission.*

*Drago spiral-bevel gears deliver a smoother, quieter, longer-lasting performance with minimal need for repairs or replacements.*

### **PRECISE CLUTCH TECHNOLOGY**

*Drago GT is the first corn head to feature a radial slip clutch design with four different operations within each row unit. Both gathering chains, knife rollers and chopper gearbox each have their own dedicated slip clutch compared to the one-clutch-for-all approach of our competition.*

*Rather than a single clutch set for the highest load setting, individual components with their own precise, protective setting means greater harvest reliability and significantly reduced potential for unwanted breakdowns and cost.*

## CHAINLESS DRIVE RELIABILITY

The Drago GT features the first chainless design – including the auger drive – that’s standard on all row configurations. Power is delivered through a simple inline design, called Endura Drive™, that transfers power directly through each row unit – eliminating two gears per row compared to our competition – for greater efficiency and durability.

Drago gear-driven inline power and auger drives deliver long-lasting, virtually maintenance-free performance and reliability.

---

**“WE WENT TO A NEW SERIES II IN 2015 AND IT’S STILL ALL ORIGINAL – WE HAVEN’T HAD TO REPLACE ANYTHING. THE DRAGO CORN HEAD IS HANDS-DOWN A BETTER MACHINE FROM WHAT WE HAD.” – AARON NIELAND, DRAGO SERIES II OWNER**

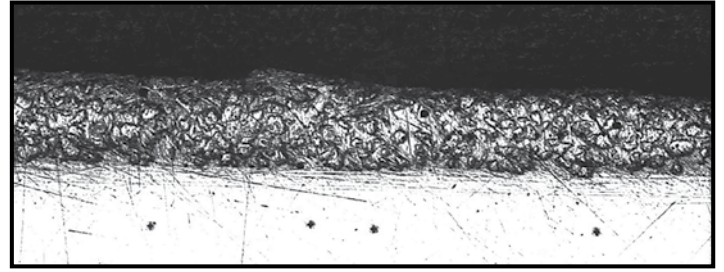
---

## LONGER-LASTING KNIVES AND BLADES

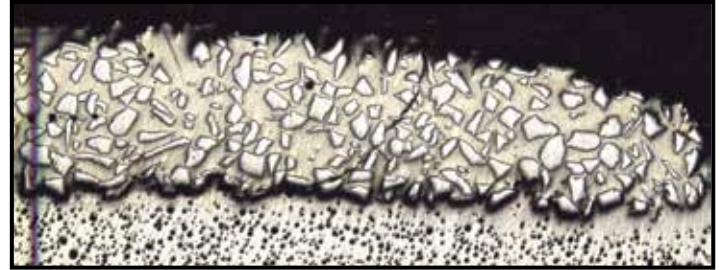
A commitment to durability extends to the performance of our roller knives and chopping blades with laser-applied tungsten, called EnduraClad™, to their working edge. Other brands apply tungsten to their knives with adhesives – a comparatively cheaper, low-tech process.

Along with higher-quality steel, our metallurgical tests reveal that Drago’s laser-applied tungsten coating is denser and more consistent than those of either John Deere or Case IH.

An even and consistent tungsten application is significant because it reduces areas of weak spots that subject knives to faster wear. In other words, the durability of a blade is only as good as the weakest point of its coating.

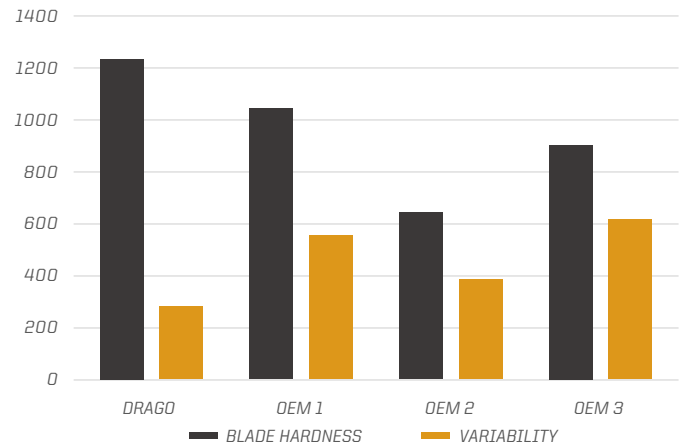


Drago blade with uniform laser-applied tungsten edge.



Major OEM blade with inconsistent application of tungsten.

## BLADE HARDNESS AND VARIABILITY



Olimac metallurgical tests showed that the coating on Drago blades is 50% more consistent than the next closest competitor, leading to a harder, longer-lasting blade.

## GATHERING CHAINS THAT LAST

Gathering chains can look the same, but they sure don’t last the same.

Metallurgical comparisons show Drago gathering chain pins are the hardest in the industry – the hard chrome coating itself is 20%-40% thicker than other brands. And when you consider that Drago chains ride on larger sprockets so they don’t have to bend as much, they can deliver thousands more acres of performance.

Drago quality standards are higher than similar full-line brands – and significantly higher than off-brand replacement parts. We can prove it.

# IT PAYS TO KEEP YOUR DRAGO ALL DRAGO

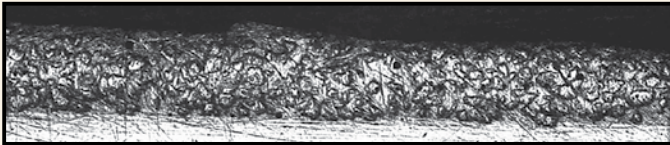
## **DRAGO KNIVES LAST 3X LONGER**

By comparison, Drago knives feature a higher-quality steel with a thicker, consistent coating of laser-applied tungsten, called EnduraClad, outlast and outperform cheaper off-brand brands multiple times over.

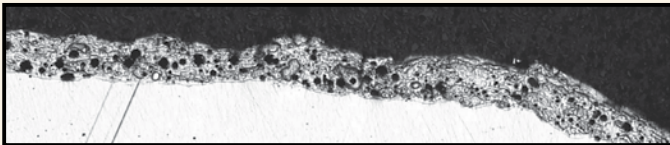
On-farm trials showed Drago blades lasted three times longer than off-brand blades and are significantly more economical in the long run.

Metallurgical tests on off-brand knife roller knives reveal inferior metals and slipshod manufacturing. What is labeled as a “tungsten carbide hard-faced” replacement knife is actually low-grade steel with a minimal, spotty application of tungsten stuck on with adhesives.

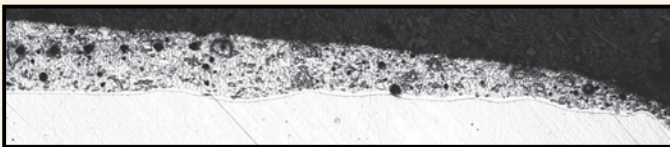
The tests showed the off-brand blades actually carried more adhesive than tungsten.



Drago blade with laser-applied tungsten edge.



Off-brand blade 1 with adhesive-applied tungsten edge.



Off-brand blade 2 with adhesive-applied tungsten edge.

Metallurgical comparisons show the laser-applied tungsten carbide edge on Drago blades has more material, more evenly applied, compared to the adhesive-applied tungsten edge on off-brand blades. As a result, Drago knives last three times longer than off-brand blades.

---

**“I OWNED A REBUILT, WELL-USED SERIES I FOR EIGHT YEARS WITHOUT ANY REPAIR ISSUES. AND I HAVEN’T TOUCHED ANYTHING ON MY 2019 GT.”**  
**– BEN HALBUR, DRAGO GT OWNER**

---

## **OFF-BRAND CHAINS NOT ONLY WEAR FASTER, THEY WEAR SPROCKETS**

Drago gathering chains are built specifically for Drago corn heads. That means you get the highest-quality materials – built to precise tolerances – for optimum performance and durability.

And that makes a big difference.

With their softer pins and inconsistent amounts of hardened chrome, other gathering chain pins and rollers can create more friction and run hotter. Along with reducing the life of the chain, the added friction wears through the sprockets they run on, too. (See sprocket images below.)



**SPROCKET WEAR WITH DRAGO GATHERING CHAINS**

Drago gathering chains feature harder pins and more hardened chrome compared to off-brand replacements. This sprocket has managed 20,000 acres with the same Drago gathering chain.



**SPROCKET WEAR WITH OFF-BRAND GATHERING CHAINS**

This sprocket ran 14,000 acres with a Drago gathering chain, 7,000 acres with an off-brand replacement, followed by 3,000 acres with yet another off-brand replacement. Wear between sprocket teeth is noticeably heavy due to off-brand pins seizing or working intermittently.

# WHAT DO OFF-BRAND BLADES REALLY COST?

On-farm trials demonstrate Drago brand knife roller blades – with their higher-quality steel and laser-applied tungsten carbide edge – last three times longer than off-brand replacement options.

Along with the initial cost of buying multiple blades, is the cost of labor to replace them. Considering total labor and materials, the real cost of choosing off-brand blades is significantly higher than Drago brand blades.

**FIGURE 1: SAVINGS ADVANTAGE OF DRAGO KNIFE ROLLER BLADES VS. OFF-BRAND REPLACEMENTS/ROW UNIT**

KNIFE BRAND	COST OF BLADES PER REPLACEMENT CYCLE*	COST OF LABOR PER REPLACEMENT CYCLE**	REPLACEMENT CYCLES OVER SAME PERIOD***	REPLACEMENT COST OVER SAME PERIOD
<b>DRAGO</b>	<b>\$383.00 / ROW UNIT</b>	<b>\$86.25 / ROW UNIT</b>	<b>1</b>	<b>\$469.25</b>
<b>OFF-BRAND</b>	<b>\$288.00 / ROW UNIT</b>	<b>\$86.25 / ROW UNIT</b>	<b>3</b>	<b>\$1122.75</b>
<b>DRAGO SAVINGS/ROW UNIT</b>				<b>\$653.50</b>

\*Prices subject to change.

\*\*Labor cost estimated .75 hour @ \$115/hr./row unit.

\*\*\*On-farm trial showed Drago blades last three times longer than off-brand blades. Individual results may vary.

**FIGURE 2: SAVINGS ADVANTAGE OF DRAGO KNIFE ROLLER BLADES VS. OFF-BRAND REPLACEMENTS/CORN HEAD**

ROW UNITS	4	6	8	10	12	16	18
<b>DRAGO COST ADVANTAGE*</b>	<b>\$2,614</b>	<b>\$3,921</b>	<b>\$5,288</b>	<b>\$6,535</b>	<b>\$7,842</b>	<b>\$10,456</b>	<b>\$11,763</b>

\*On-farm trial showed Drago blades last three times longer than off-brand blades. Individual results may vary. Savings include replacement blades and labor costs. See Figure 1.

## OFF-BRAND BLADES MAY LOOK THE SAME BUT PERFORM MUCH DIFFERENTLY

These images compare a Drago knife roller blade with EnduraClad to an off-brand replacement blade from row units that have run through 500 acres. The off-brand replacement blade (lower image) has worn through its useful life, while the Drago blade has hundreds of acres of harvest life left – thousands of acres on the corn head overall. Drago blades deliver more acres, fewer replacements and a lower overall cost.



# **CONFIDENCE IN AVAILABLE PARTS AND KNOWLEDGEABLE SERVICE.**

## **WE GUARANTEE IT.**

*Drago corn heads are built to last, but when service is needed, having a complete and available supply of parts at Dragotec USA is a priority.*

*We are so confident of Drago parts supply, in fact, that while harvesting, if any part essential to continued operation is not available from any of our North American distribution centers – including your local authorized Drago dealer, regional parts hubs or our North American headquarters – the replacement part and shipping are free.*

*We call it the "We've Got Your Back" parts guarantee. And as amazing as our parts guarantee may be, no one has ever used it.*



**Visit [dragotec.com/parts-availability](https://dragotec.com/parts-availability)  
or scan this code with your  
smartphone to learn more.**

Dragotec USA  
3701 30th Ave.  
Fenton, IA 50539  
(888) 789-2723  
[dragotec.com](https://dragotec.com)