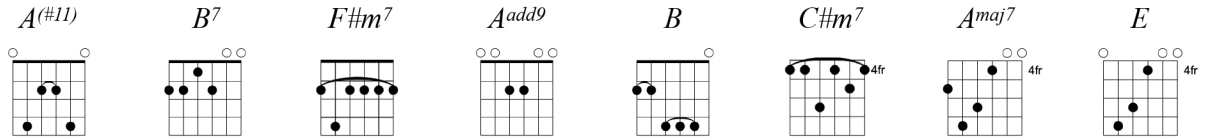


intrepid

Evan Stephens Hall // Pinegrove



A(#11)

B7

F#m7

B7

don't let it get to you you said well i did

A(#11)

B7

F#m7

B7

take a rectangle untangle your head intrepid

Aadd9

B

F#m7

B7

would you bet your life on it darling if i did?

Aadd9

B

F#m7

B7

well the way i spent my winter i wonder how could we commit?



A(#11)

Amaj7

E

Amaj7

E

when the long road noise is loud & you can't hear the song go

Amaj7

E

Amaj7

E

& i'm out here with no real belief & no hand for me to hold

Amaj7

E

Amaj7

E

up in the early morning for no reason again

Amaj7

E

Amaj7

E

relistening to your message & i held it in my head

Amaj7

E

Amaj7

E

through broke signal like what type of world we wanna live in

Amaj7

E

Amaj7

E

do we curl inwards or live long together in forgiveness?

Aadd9

B

F#m7

B7

& you said do we bend our lives to it darling? then we did

Aadd9

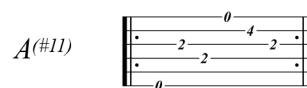
C#m7

B

F#m7

B7

if we learn to love ourselves better maybe we could commit



A(#11)