

LEIDENSCHAFT HÖHENBERGSTEIGEN



In Thin AIR

präsentiert von

Marmot *Globetrotter*
Adventure

LOWA
simply more...

DYNAFIT **LEKI**

LUIS STITZINGER & ALIX VON MELLE















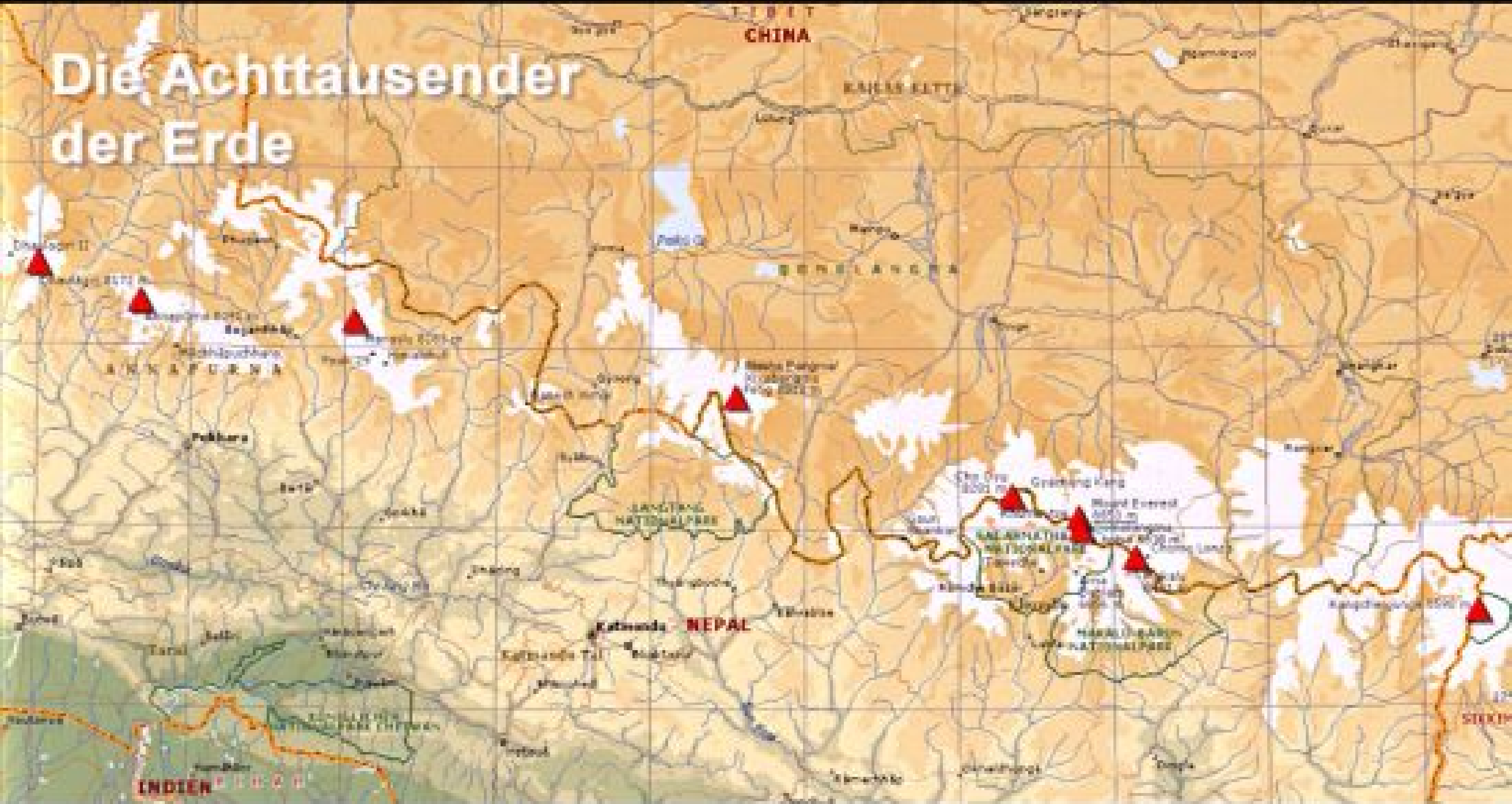








Die Achttausender der Erde



Die Achttausender der Erde







ننگا پاربات

Nanga Parbat 8125 m

Der Schicksalsberg der Deutschen









**LOOK LEFT
NANGA PARBAT
(KILLER MOUNTAIN)
HEIGHT 26660 FT
STATUS 3RD HIGHEST
(142 RMB FWD)**



















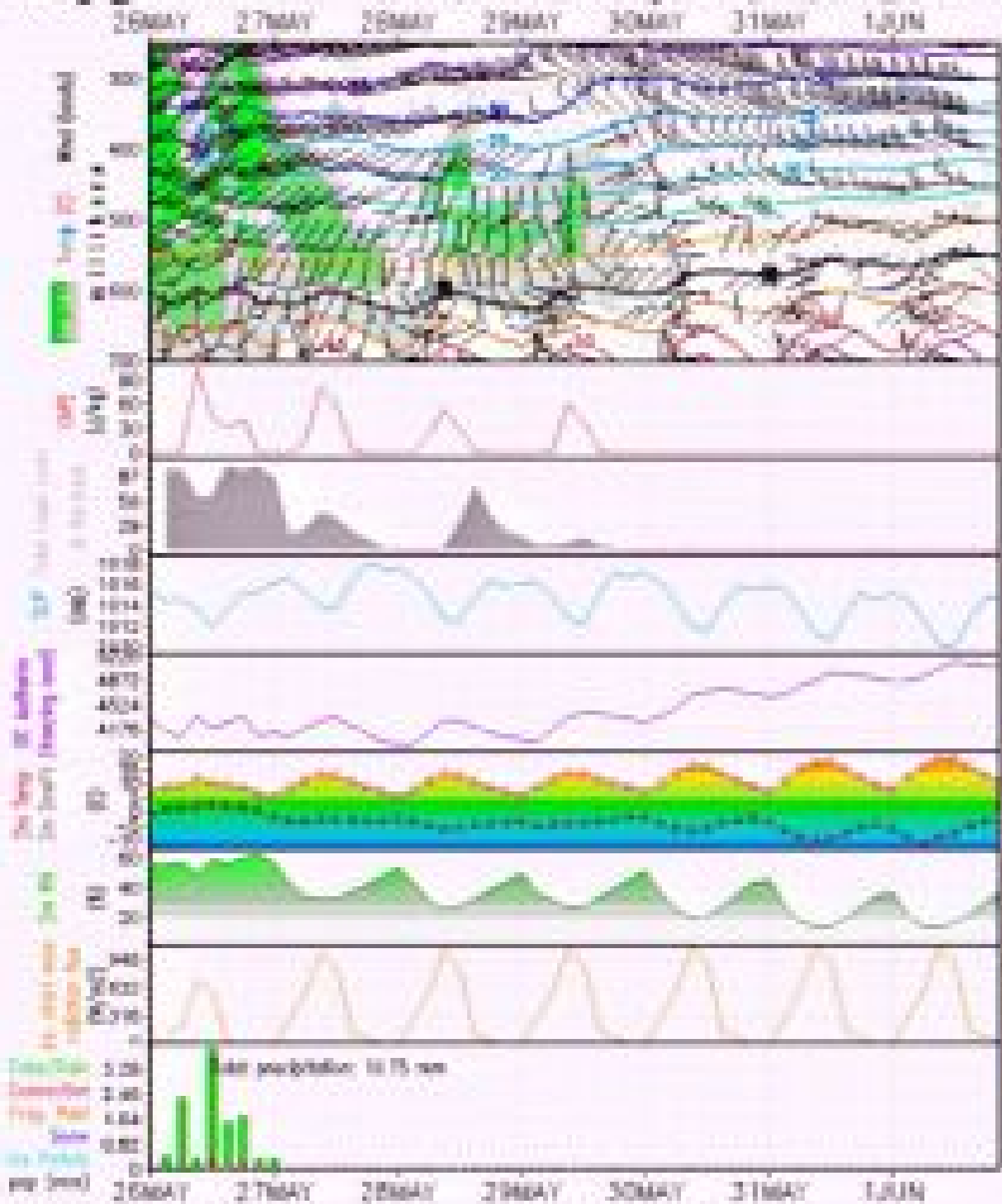




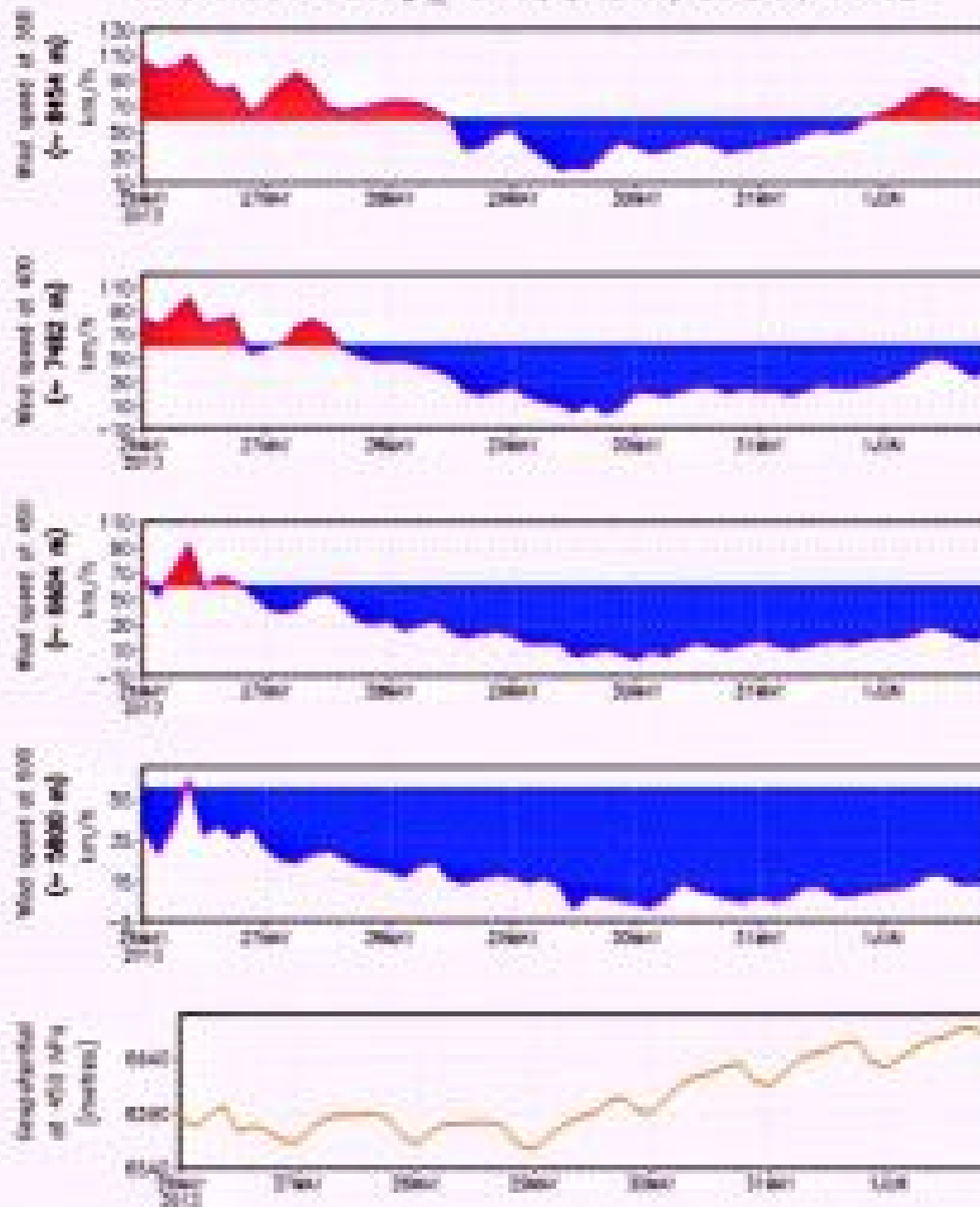


Nanga_Parbat

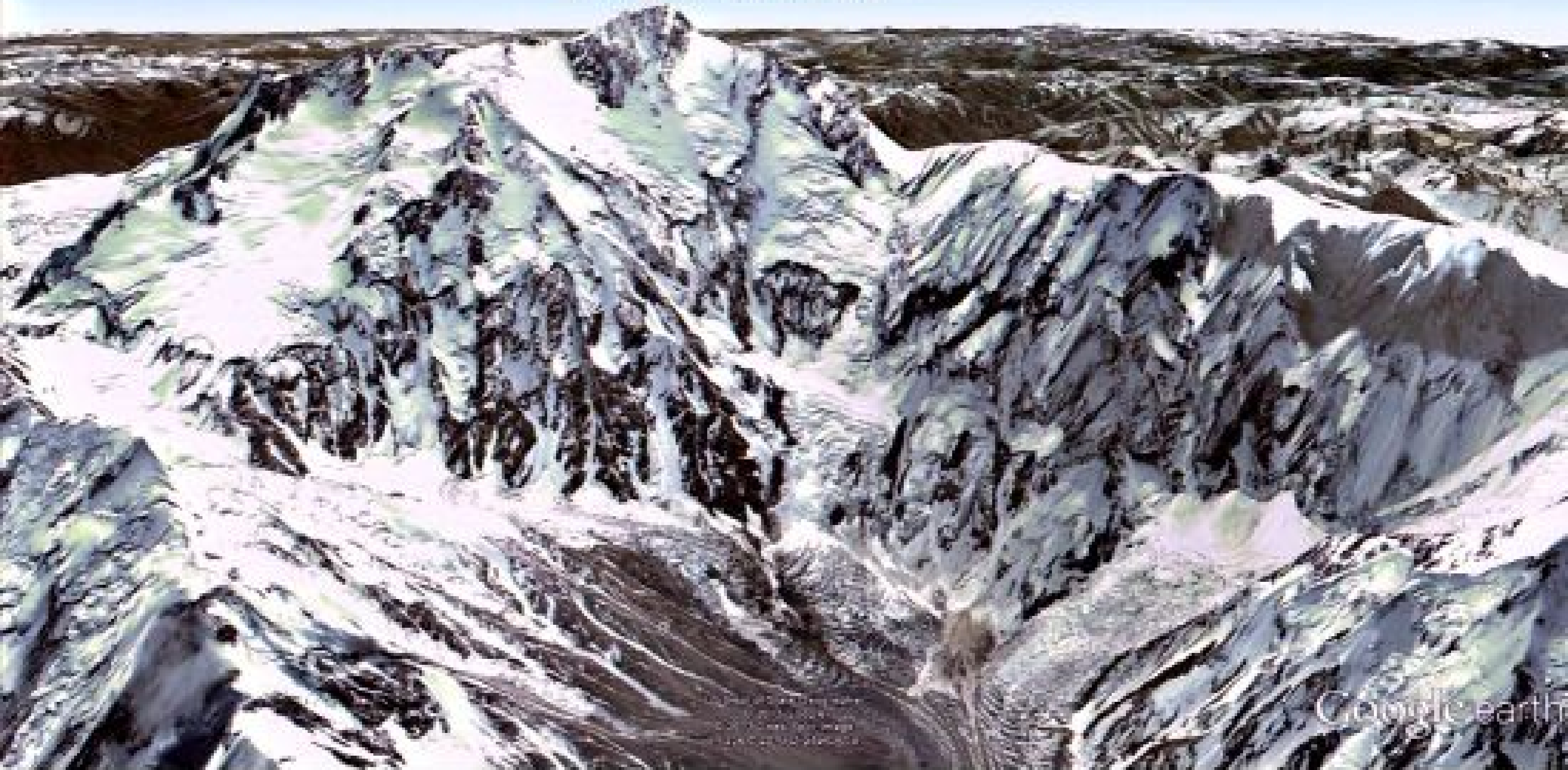
IFS Forecast meteorogram for (74.5E, 35.5N), IFS file



Wind levels on Nanga_Parbat, (35.27N, 74.58E)



Marga Parbat 8125 m















C3 8800 m

Nordgipfel 8070 m

Hauptgipfel 8163 m

C4 7200 m

C2 8200 m

Diamirflanke
(NW-Wand)

C1 4950 m

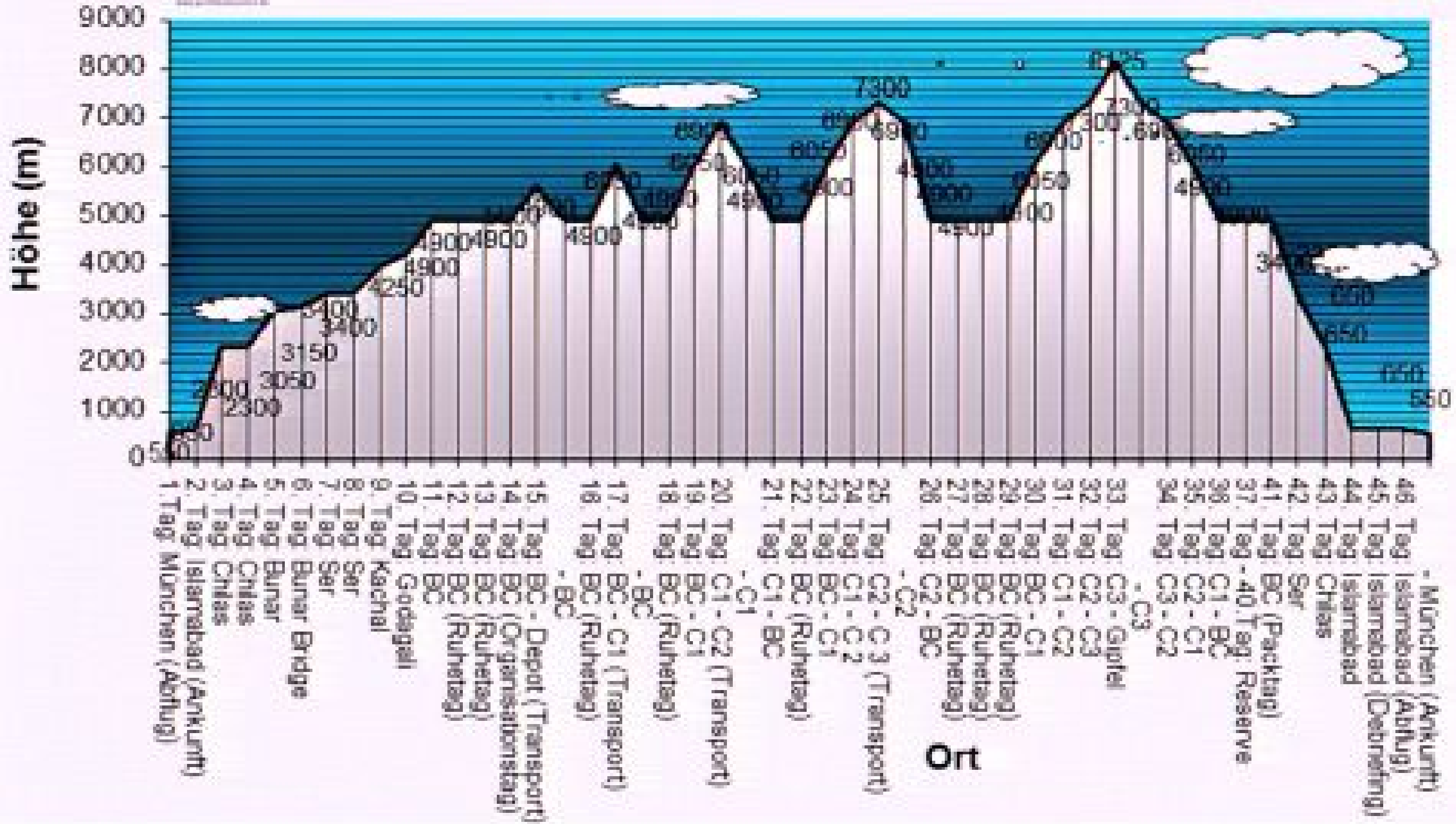
BC 4250 m







Expedition zum Nanga Parbat 8125 m, Pakistan





















Manaslu 8163 m



मनास्लु
Der Berg der Seele











WEL COME TO
YAK HOTEL
&
RESTAURENT
SHAMDO, GORKHA









Hauptgipfel 8163 m
(verborgen)

Ostgipfel 7994 m

Manaslu North 6994 m

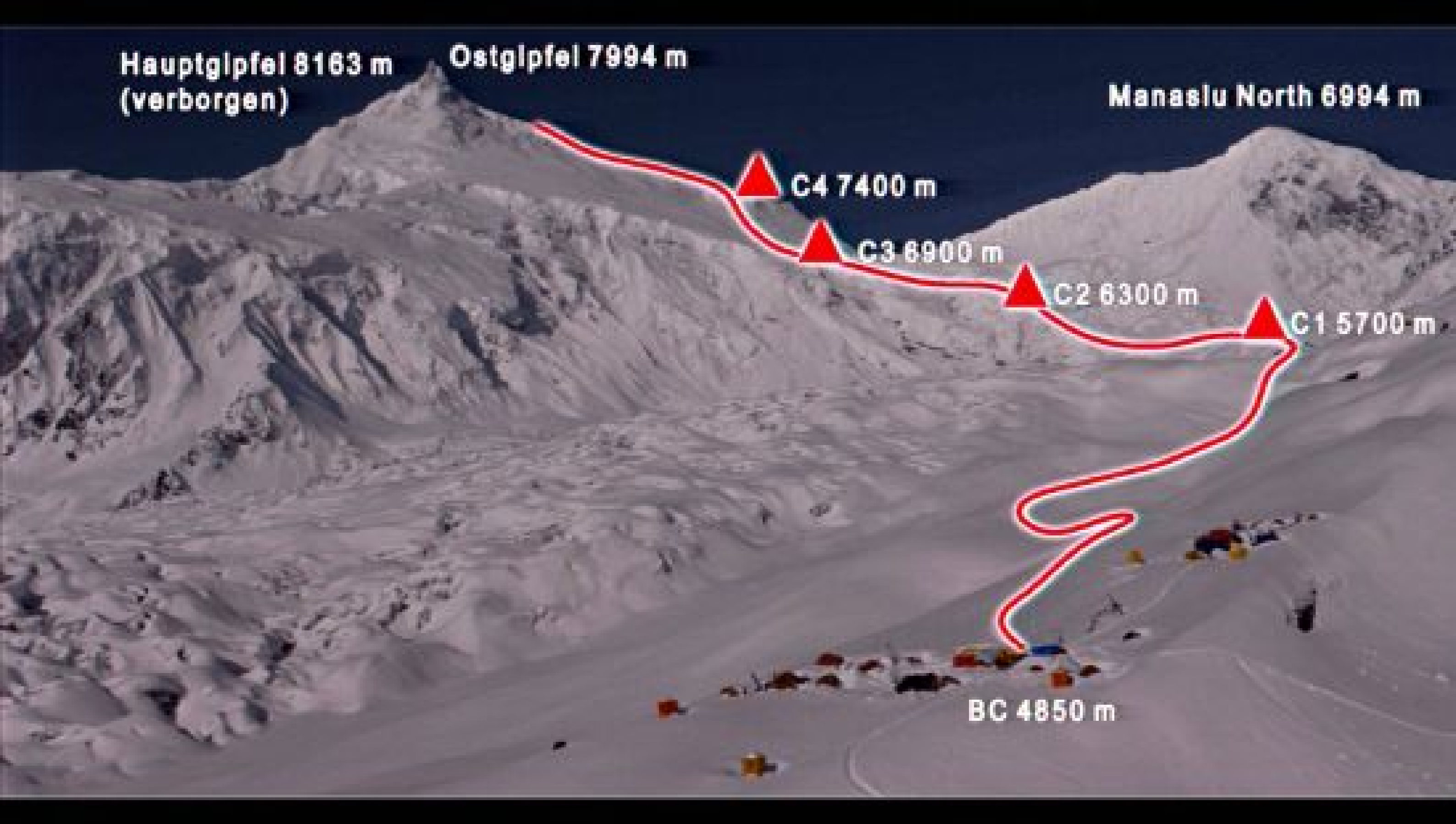
C4 7400 m

C3 6900 m

C2 6300 m

C1 5700 m

BC 4850 m













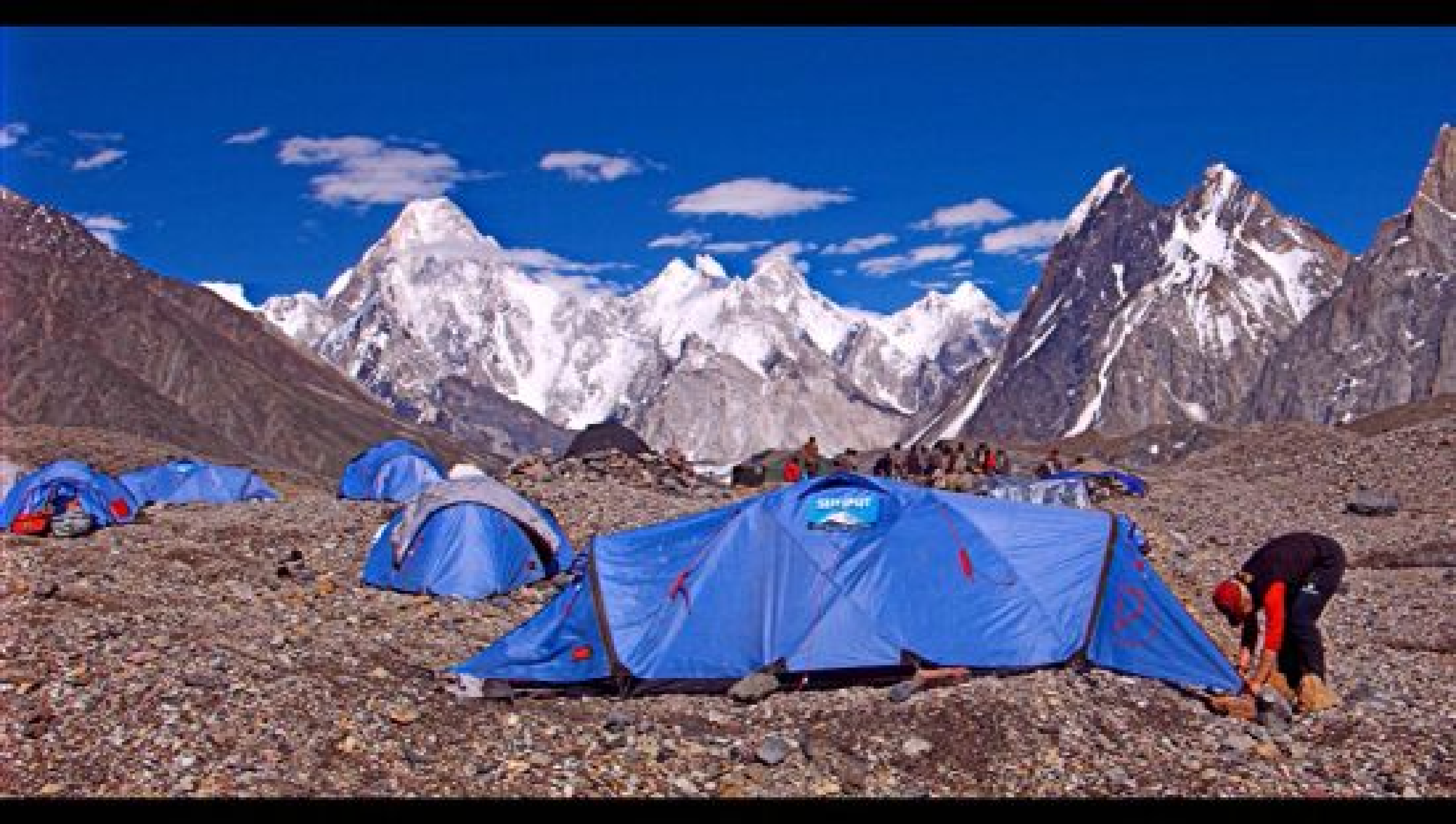






Broad Peak 8051 m

پروڈ پیگ
Das Breithorn des Baltoro













Nordgipfel 7490 m

Hauptgipfel 8051 m

837000 m

826200 m

W-Grat

815700 m

BC 4900 m



















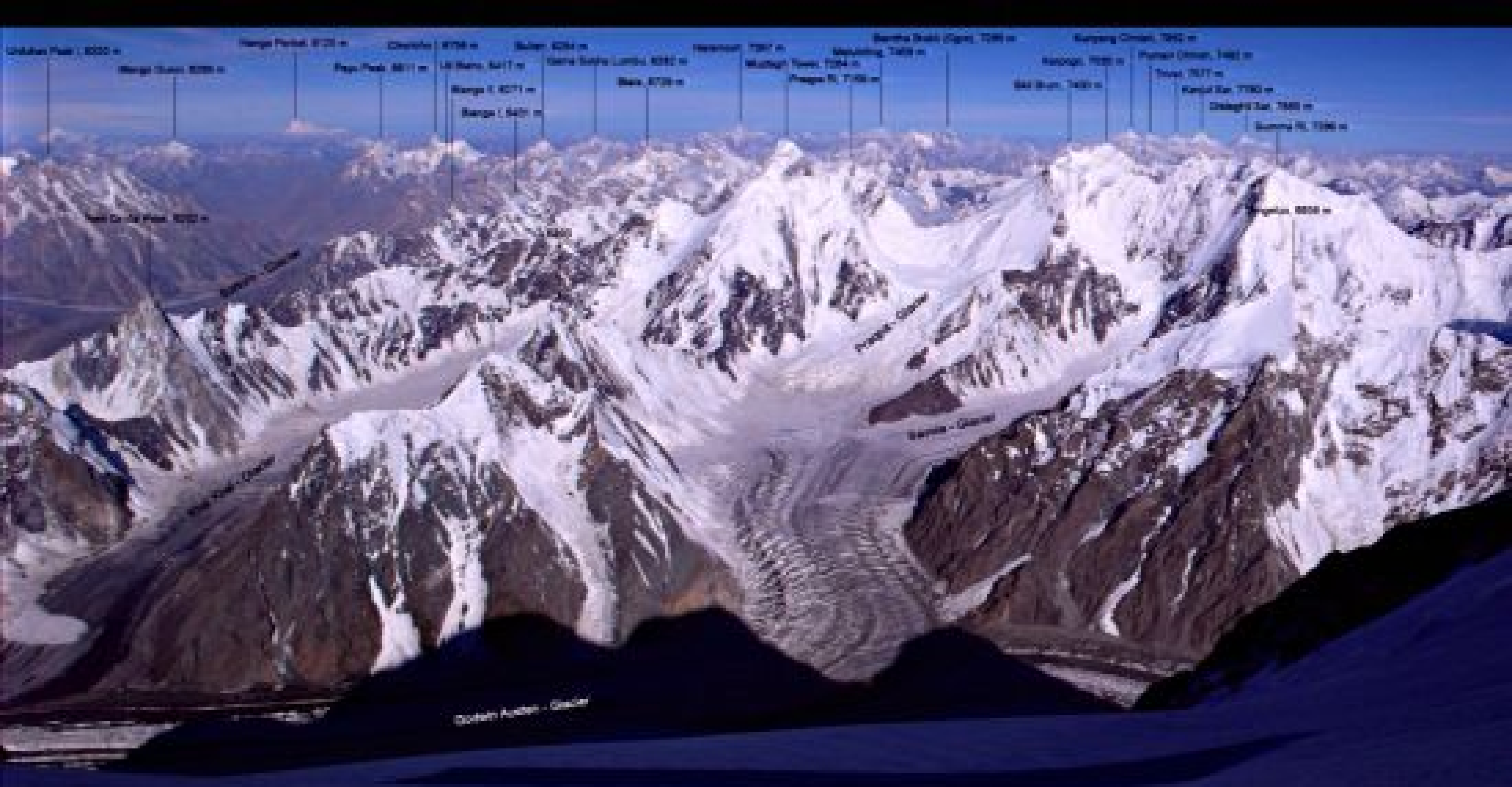


Foto: Luis Stöckinger & Alex von Melle, Beschriftung: Günter Seyffarth



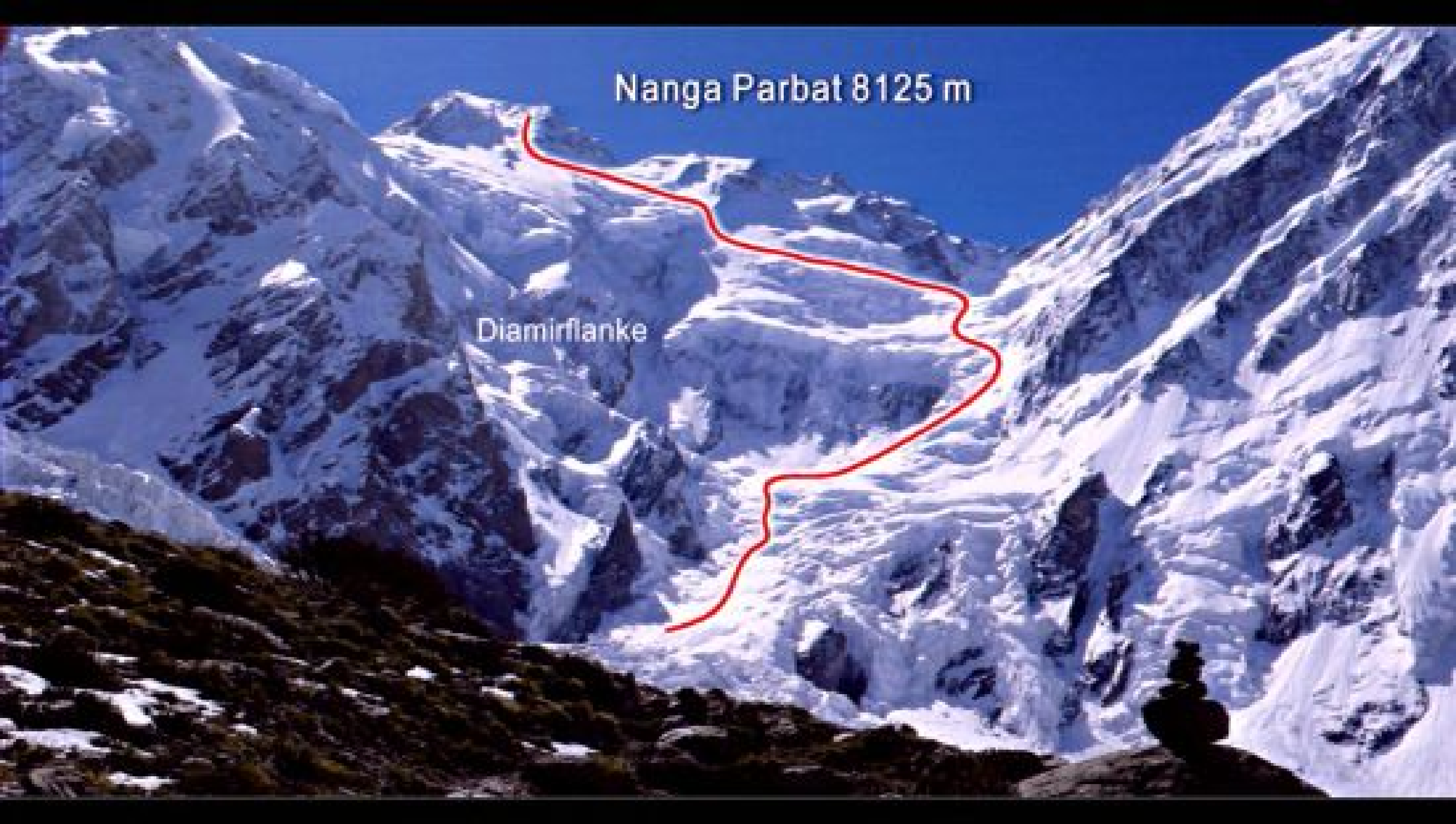


Gashereum18035 n



Nanga Parbat 8125 m

Diamirflanke



Broad Peak 8051 m

W-ward





K2 8611 m

S-Wand





Hauptgipfel 8027 m

Zentralgipfel 8013 m

Shisha Pangma 8027 m

NIO-Wand





Manaslu 6163 m

NO-Wand









Ende

powered by

