

FABRICUT<sup>®</sup>  
CONTRACT

HEALTHCARE & SENIOR LIVING  
VOL. II

FAUX LEATHERS



# BIBLIOTECA

54" Wide

Repeat: N/A

Face: 100% Polyurethane

Backing: 100% Polyester

Exceeds 300,000 Double Rubs Wyzenbeek Method

stakleen®  
PERFORMANCE FABRIC

Alloy



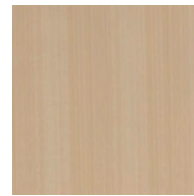
Bronze



Chocolate



Dark Gold



Desert



Ebony



Jade



Khaki



Kiwi



Lipstick



Patina



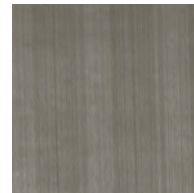
Persimmon



Seafoam



Shell



Smoke



Teal

# BIBLIOTECA

sta\*kleen®  
PERFORMANCE FABRIC

## PERFORMANCE:

SURFACE TYPE: 100% POLYURETHANE (PVC FREE)  
WEIGHT AT 54 INCHES: 21 OZ/YD  
BACKING WEIGHT: 3.5 OZ/YD2  
BACKING TYPE/COMPOSITION: 100% POLYESTER  
REPEAT: NONE  
FINISH: STA\*KLEEN  
RAILROADED: NO

ASTM D 751-89  
THICKNESS .095±10% MM.  
TOTAL WEIGHT 13.57±10% OZ./YD2.  
ADHESION 4 X 4 MIN. LBS./IN.  
STRETCH 2 X 12% AT 15#

BLOCKING - FED. STD. 191A METHOD 5872 PASS

ABRASION RESISTANCE ASTM D4157-07  
PASSES 300,000 DOUBLE RUBS WYZENBEEK TEST  
METHOD

TEAR ASTM D5587-07  
15 X 12 MIN. LBS.

TENSILE ASTM D5034-09  
90 X 80 MIN. LBS./IN.

SEAM STRENGTH ASTM D1683-07A  
60 X 60 MIN. LBS.

RESISTANCE TO MILDEW ASTM G-21  
NO GROWTH

RESISTANCE TO HYDROLYSIS  
5 WEEKS NO DELAMINATING

UV STABILITY  
40 HOURS

CROCK RESISTANCE - FED. STD. 191A METHOD 5651  
20 - NO STAIN

## FLAMMABILITY:

PASSES CALIFORNIA TB117 SECTION E  
PASSES NFPA 260A  
PASSES ASTM E84  
UFAC CLASS I  
PASSES IMO A 652 (16) 8.2/8.3

MAY COMPLY WITH CALIFORNIA 133 WHEN TESTED  
WITH SUITABLE COMPONENTS

MEETS OR EXCEEDS ALL HEAVY-DUTY  
REQUIREMENTS FOR HEALTHCARE AND  
HOSPITALITY UPHOLSTERY FABRIC

## CLEANING CODE: SW

EXCLUSIVE STA\*KLEEN FINISH FOR EASY CARE AND  
STAIN-FREE SURFACES. MOST STAINS AND  
BALLPOINT PEN MARKS CAN BE EASILY WIPED OUT  
WITH A CLEAN DRY TOWEL. RUBBING ALCOHOL  
(ISOPROPYL ALCOHOL) CAN BE USED TO CLEAN  
ANY REMAINING STAIN. WASH AREA OFF WITH  
CLEAN WARM WATER TO REMOVE ANY  
RESIDUE.



# HUXLEY

54" Wide

Repeat: N/A

Face: 100% Polyvinylchloride

Backing: 100% Polyester

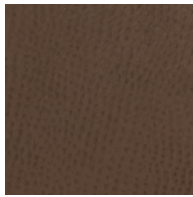
Soil & Stain Repellent Finish

Exceeds 100,000 Double Rubs Wyzenbeek Method

Caviar



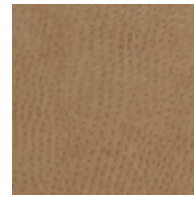
Cherry



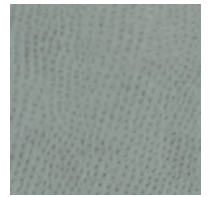
Chestnut



Chocolate Chip



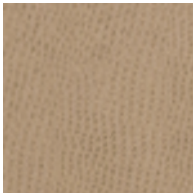
Chutney



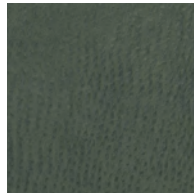
Drizzle



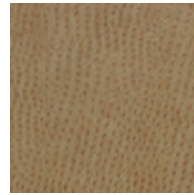
Fog



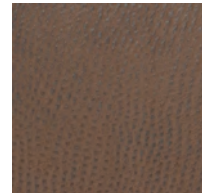
Hemp



Moss



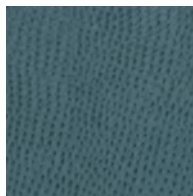
Ochre



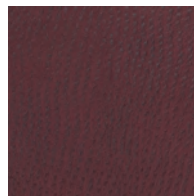
Outback



Pewter



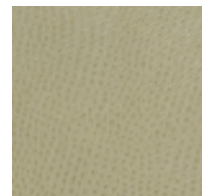
Poseidon



Ruby



Snow



Willow

# HUXLEY

## PERFORMANCE:

SURFACE TYPE: 100% POLYVINYLCHLORIDE  
WEIGHT AT 54 INCHES: 28 OZ/YD  
BACKING WEIGHT: 4.0 OZ/YD2  
BACKING TYPE/COMPOSITION: 100% POLYESTER  
REPEAT: NONE  
FINISH: SOIL & STAIN  
RAILROADED: NO

ASTM D 751-89  
THICKNESS 1.0±10% MM.  
TOTAL WEIGHT 18.66±10% OZ./YD2.  
ADHESION 13 WARP/2.3 FILL

ABRASION RESISTANCE ASTM D4157-07  
PASSES 100,000 DOUBLE RUBS WYZENBEEK TEST  
METHOD

TEAR ASTM D5587-07  
12.7 WARP/10.4 FILL

TENSILE ASTM D5034-09  
79.4/54.4 WARP  
56/166.4 FILL

SEAM STRENGTH ASTM D1683-07A  
40 WARP/29.9 FILL

RESISTANCE TO MILDEW ASTM G-21  
NO GROWTH

RESISTANCE TO HYDROLYSIS  
NO DELAMINATING

UV STABILITY  
1000 HOURS

## FLAMMABILITY:

PASSES CALIFORNIA TB117 SECTION E  
PASSES NFPA 260A, UFAC CLASS I  
PASSES IMO A 652 (16) 8.2/8.3

MAY COMPLY WITH CALIFORNIA 133 WHEN TESTED  
WITH SUITABLE COMPONENTS

MEETS OR EXCEEDS ALL HEAVY-DUTY  
REQUIREMENTS FOR HEALTHCARE AND  
HOSPITALITY UPHOLSTERY FABRIC

## CARE & CLEANING GUIDE:

PROMPT CLEANING IS ALWAYS RECOMMENDED.  
RECOMMENDED CLEANING STEPS ARE LISTED  
BY TYPE OF STAIN. FOR BEST RESULTS FOLLOW  
CLEANING STEPS IN ORDER.

STEP 1: MILD SOAP AND WATER, THEN RINSE  
WITH FRESH WATER AND WIPE DRY WITH  
A CLEAN CLOTH.

STEP 2: WIPE AFFECTED AREA WITH A SOFT  
CLOTH OR SOFT BRISTLE BRUSH USING A  
NON-ABRASIVE CLEANER, FOR EXAMPLE  
FORMULA 409™ OR FANTASTIK™. RINSE  
WITH FRESH WATER AND WIPE DRY.

STEP 3: 10% SOLUTION OF HOUSEHOLD  
BLEACH AND WATER. RINSE WITH FRESH  
WATER AND WIPE DRY.

STEP 4: 25% SOLUTION OF ALCOHOL AND WATER.  
RINSE WITH FRESH WATER AND WIPE DRY.

STEP 5: 25% SOLUTION OF LIGHTER FLUID OR  
NAIL POLISH REMOVER AND WATER.  
RINSE WITH FRESH WATER AND WIPE DRY.

REGULAR CLEANING & MAINTENANCE - STEP 1  
OILS (ORGANIC & PETROLEUM BASE) - STEPS 1 & 2  
FOOD - STEPS 1 & 2  
HEALTHCARE - STEPS 1, 2, & 3  
DIFFICULT STAINS - STEPS 1, 2, 3, 4, & 5





# JOURNALISM

54" Wide

Repeat: N/A

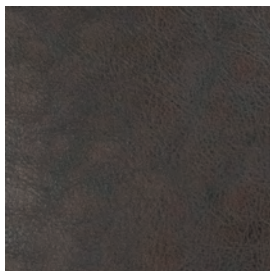
Face: 100% Polyurethane

Backing: 65% Polyester, 35% Cotton

Exceeds 500,000 Double Rubs Wyzenbeek Method

sta<sup>®</sup>kleen<sup>®</sup>  
PERFORMANCE FABRIC

Alabaster



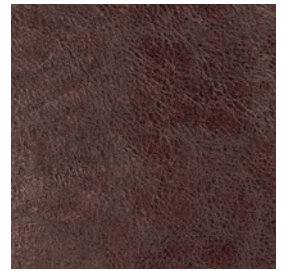
Bittersweet



Brass



Bronze



Merlot



Pewter



Antique

# JOURNALISM

sta\*kleen®  
PERFORMANCE FABRIC

## PERFORMANCE:

SURFACE TYPE: 100% POLYURETHANE (PVC FREE)  
WEIGHT AT 54 INCHES: 33 OZ/YD  
BACKING WEIGHT: 3.5 OZ/YD2  
BACKING TYPE/COMPOSITION: 100% POLYESTER,  
35% COTTON  
REPEAT: NONE  
FINISH: STA\*KLEEN  
RAILROADED: NO

ASTM D 751-89  
THICKNESS 1±10% MM.  
TOTAL WEIGHT 22±10% OZ./YD2.  
ADHESION 4 X 4 MIN. LBS./IN.  
STRETCH 2 X 7% AT 15#

BLOCKING - FED. STD. 191A METHOD 5872 PASS

ABRASION RESISTANCE ASTM D4157-07  
PASSES 500,000 DOUBLE RUBS WYZENBEEK TEST  
METHOD

TEAR ASTM D5587-07  
15 X 12 MIN. LBS.

TENSILE ASTM D5034-09  
80 X 70 MIN. LBS./IN.

SEAM STRENGTH ASTM D1683-07A  
60 X 60 MIN. LBS.

RESISTANCE TO MILDEW ASTM G-21  
NO GROWTH

RESISTANCE TO HYDROLYSIS  
5 WEEKS NO DELAMINATING

UV STABILITY  
40 HOURS

CROCK RESISTANCE - FED. STD. 191A METHOD 5651  
20 - NO STAIN

## FLAMMABILITY:

PASSES CALIFORNIA TB117 SECTION E  
PASSES NFPA 260A  
PASSES ASTM E84  
UFAC CLASS I  
PASSES IMO A 652 (16) 8.2/8.3

MAY COMPLY WITH CALIFORNIA 133 WHEN TESTED  
WITH SUITABLE COMPONENTS

MEETS OR EXCEEDS ALL HEAVY-DUTY  
REQUIREMENTS FOR HEALTHCARE AND  
HOSPITALITY UPHOLSTERY FABRIC

## CLEANING CODE: SW

EXCLUSIVE STA\*KLEEN FINISH FOR EASY CARE AND  
STAIN-FREE SURFACES. MOST STAINS AND  
BALLPOINT PEN MARKS CAN BE EASILY WIPED OUT  
WITH A CLEAN DRY TOWEL. RUBBING ALCOHOL  
(ISOPROPYL ALCOHOL) CAN BE USED TO CLEAN  
ANY REMAINING STAIN. WASH AREA OFF WITH  
CLEAN WARM WATER TO REMOVE ANY  
RESIDUE.



# MORRISON

54" Wide

Repeat: N/A

Face: 100% Polyvinylchloride

Backing: 100% Polyester

Soil & Stain Repellent Finish

Exceeds 100,000 Double Rubs Wyzenbeek Method

Jalapeno



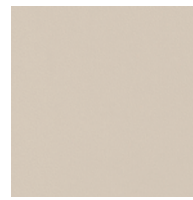
Aloe



Aubergine



Beet



Bisque



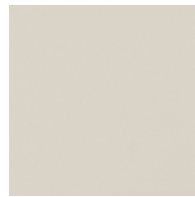
Blueberry



Butterscotch



Cafe



Chiffon



China Red



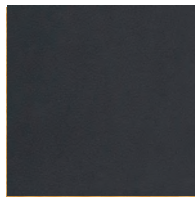
Citronella



Curry



Eggnog



Iron



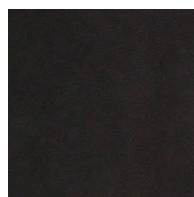
Maize



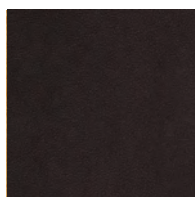
Matador



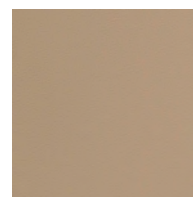
Meridian



Onyx



Pumpnickel



Sand



Tahiti



# MORRISON

## PERFORMANCE:

SURFACE TYPE: 100% POLYVINYLCHLORIDE  
WEIGHT AT 54 INCHES: 28 OZ/YD  
BACKING WEIGHT: 4.0 OZ/YD2  
BACKING TYPE/COMPOSITION: 100% POLYESTER  
REPEAT: NONE  
FINISH: SOIL & STAIN  
RAILROADED: NO

ASTM D 751-89  
THICKNESS 1.0±10% MM.  
TOTAL WEIGHT 18.66±10% OZ./YD2.  
ADHESION 13 WARP/12.3 FILL

ABRASION RESISTANCE ASTM D4157-07  
PASSES 100,000 DOUBLE RUBS WYZENBEEK TEST  
METHOD

TEAR ASTM D5587-07  
12.7 WARP/10.4 FILL

TENSILE ASTM D5034-09  
79.4/54.4 WARP  
56/166.4 FILL

SEAM STRENGTH ASTM D1683-07A  
40 WARP/29.9 FILL

RESISTANCE TO MILDEW ASTM G-21  
NO GROWTH

RESISTANCE TO HYDROLYSIS  
NO DELAMINATING

UV STABILITY  
1000 HOURS

## FLAMMABILITY:

PASSES CALIFORNIA TB117 SECTION E  
PASSES NFPA 260A, UFAC CLASS I  
PASSES IMO A 652 (16) 8.2/8.3

MAY COMPLY WITH CALIFORNIA 133 WHEN TESTED  
WITH SUITABLE COMPONENTS

MEETS OR EXCEEDS ALL HEAVY-DUTY  
REQUIREMENTS FOR HEALTHCARE AND  
HOSPITALITY UPHOLSTERY FABRIC

## CARE & CLEANING GUIDE:

PROMPT CLEANING IS ALWAYS RECOMMENDED.  
RECOMMENDED CLEANING STEPS ARE LISTED  
BY TYPE OF STAIN. FOR BEST RESULTS FOLLOW  
CLEANING STEPS IN ORDER.

STEP 1: MILD SOAP AND WATER, THEN RINSE  
WITH FRESH WATER AND WIPE DRY WITH  
A CLEAN CLOTH.

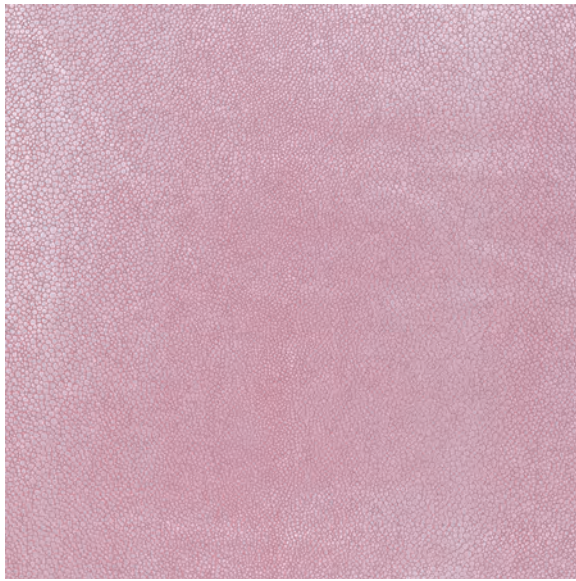
STEP 2: WIPE AFFECTED AREA WITH A SOFT  
CLOTH OR SOFT BRISTLE BRUSH USING A  
NON-ABRASIVE CLEANER, FOR EXAMPLE  
FORMULA 409™ OR FANTASTIK™. RINSE  
WITH FRESH WATER AND WIPE DRY.

STEP 3: 10% SOLUTION OF HOUSEHOLD  
BLEACH AND WATER. RINSE WITH FRESH  
WATER AND WIPE DRY.

STEP 4: 25% SOLUTION OF ALCOHOL AND WATER.  
RINSE WITH FRESH WATER AND WIPE DRY.

STEP 5: 25% SOLUTION OF LIGHTER FLUID OR  
NAIL POLISH REMOVER AND WATER.  
RINSE WITH FRESH WATER AND WIPE DRY.

REGULAR CLEANING & MAINTENANCE - STEP 1  
OILS (ORGANIC & PETROLEUM BASE) - STEPS 1 & 2  
FOOD - STEPS 1 & 2  
HEALTHCARE - STEPS 1, 2, & 3  
DIFFICULT STAINS - STEPS 1, 2, 3, 4, & 5



# NOTABLE

54" Wide

Repeat: N/A

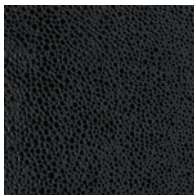
Face: 100% Polyester

Backing: 100% Polyester

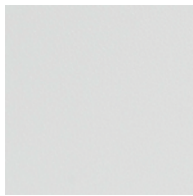
Exceeds 300,000 Double Rubs Wyzenbeek Method

sta★kleen®  
PERFORMANCE FABRIC

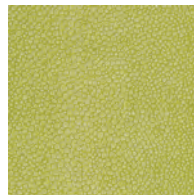
Berry



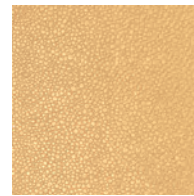
Cracked Pepper



Drift



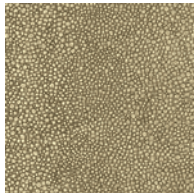
Limeade



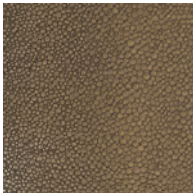
Mimosa



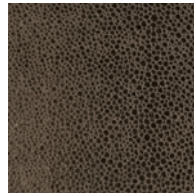
Nickle



Pebble



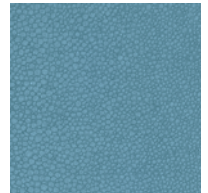
Travertine



Truffle



Vineyard



Water

# NOTABLE



## PERFORMANCE:

SURFACE TYPE: 100% POLYURETHANE (PVC FREE)  
WEIGHT AT 54 INCHES: 21 OZ/YD  
BACKING WEIGHT: 3.5 OZ/YD2  
BACKING TYPE/COMPOSITION: 100% POLYESTER  
REPEAT: NONE  
FINISH: STA\*KLEEN  
RAILROADED: NO

ASTM D 751-89  
THICKNESS .095±10% MM.  
TOTAL WEIGHT 13.57±10% OZ./YD2.  
ADHESION 4 X 4 MIN. LBS./IN.  
STRETCH 2 X 12% AT 15#

BLOCKING - FED. STD. 191A METHOD 5872 PASS

ABRASION RESISTANCE ASTM D4157-07  
PASSES 300,000 DOUBLE RUBS WYZENBEEK TEST  
METHOD

TEAR ASTM D5587-07  
15 X 12 MIN. LBS.

TENSILE ASTM D5034-09  
90 X 80 MIN. LBS./IN.

SEAM STRENGTH ASTM D1683-07A  
60 X 60 MIN. LBS.

RESISTANCE TO MILDEW ASTM G-21  
NO GROWTH

RESISTANCE TO HYDROLYSIS  
5 WEEKS NO DELAMINATING

UV STABILITY  
40 HOURS

CROCK RESISTANCE - FED. STD. 191A METHOD 5651  
20 - NO STAIN

## FLAMMABILITY:

PASSES CALIFORNIA TB117 SECTION E  
PASSES NFPA 260A  
PASSES ASTM E84  
UFAC CLASS I  
PASSES IMO A 652 (16) 8.2/8.3

MAY COMPLY WITH CALIFORNIA 133 WHEN TESTED  
WITH SUITABLE COMPONENTS

MEETS OR EXCEEDS ALL HEAVY-DUTY  
REQUIREMENTS FOR HEALTHCARE AND  
HOSPITALITY UPHOLSTERY FABRIC

## CLEANING CODE: SW

EXCLUSIVE STA\*KLEEN FINISH FOR EASY CARE AND  
STAIN-FREE SURFACES. MOST STAINS AND  
BALLPOINT PEN MARKS CAN BE EASILY WIPED OUT  
WITH A CLEAN DRY TOWEL. RUBBING ALCOHOL  
(ISOPROPYL ALCOHOL) CAN BE USED TO CLEAN  
ANY REMAINING STAIN. WASH AREA OFF WITH  
CLEAN WARM WATER TO REMOVE ANY  
RESIDUE.



# PUBLISHER

54" Wide

Repeat: N/A

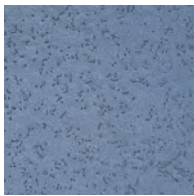
Face: 100% Polyurethane

Backing: 100% Polyester

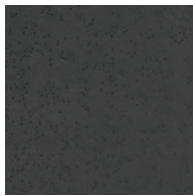
Exceeds 300,000 Double Rubs Wyzenbeek Method

**stakleen®**  
PERFORMANCE FABRIC

Almond



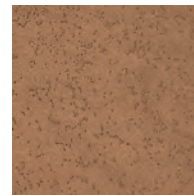
Azul



Black



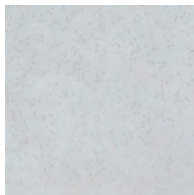
Cinnamon



Cocoa



Gilded



Haze



Honey



Paprika



Pear



Pewter



Ridge



Rose



Sea Green



Spice



Spring

# PUBLISHER



## PERFORMANCE:

SURFACE TYPE: 100% POLYURETHANE (PVC FREE)  
WEIGHT AT 54 INCHES: 21 OZ/YD  
BACKING WEIGHT: 4.0 OZ/YD2  
BACKING TYPE/COMPOSITION: 100% POLYESTER  
REPEAT: NONE  
FINISH: STA\*KLEEN  
RAILROADED: NO

ASTM D 751-89  
THICKNESS 0.95±10% MM.  
TOTAL WEIGHT 13.57±10% OZ./YD2.  
ADHESION 4 X 4 MIN. LBS./IN.  
STRETCH 2 X 12% AT 15#

BLOCKING - FED. STD. 191A METHOD 5872 PASS

ABRASION RESISTANCE ASTM D4157-07  
PASSES 300,000 DOUBLE RUBS WYZENBEEK TEST  
METHOD

TEAR ASTM D5587-07  
15 X 12 MIN. LBS.

TENSILE ASTM D5034-09  
90 X 80 MIN. LBS./IN.

SEAM STRENGTH ASTM D1683-07A  
60 X 60 MIN. LBS.

RESISTANCE TO MILDEW ASTM G-21  
NO GROWTH

RESISTANCE TO HYDROLYSIS  
NO DELAMINATING

UV STABILITY  
40 HOURS

CROCK RESISTANCE - FED. STD. 191A METHOD 5651  
20 - NO STAIN

## FLAMMABILITY:

PASSES CALIFORNIA TB117 SECTION E  
PASSES NFPA 260A  
PASSES ASTM E84  
UFAC CLASS I  
PASSES IMO A 652 (16) 8.2/8.3

MAY COMPLY WITH CALIFORNIA 133 WHEN TESTED  
WITH SUITABLE COMPONENTS

MEETS OR EXCEEDS ALL HEAVY-DUTY  
REQUIREMENTS FOR HEALTHCARE AND  
HOSPITALITY UPHOLSTERY FABRIC

## CLEANING CODE: SW

EXCLUSIVE STA\*KLEEN FINISH FOR EASY CARE AND  
STAIN-FREE SURFACES. MOST STAINS AND  
BALLPOINT PEN MARKS CAN BE EASILY WIPED OUT  
WITH A CLEAN DRY TOWEL. RUBBING ALCOHOL  
(ISOPROPYL ALCOHOL) CAN BE USED TO CLEAN  
ANY REMAINING STAIN. WASH AREA OFF WITH  
CLEAN WARM WATER TO REMOVE ANY  
RESIDUE.





# RESOURCE

54" Wide

Repeat: N/A

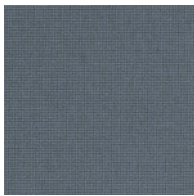
Face: 100% Polyurethane

Backing: 100% Polyester

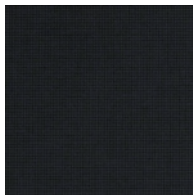
Exceeds 300,000 Double Rubs Wyzenbeek Method

starkleen®  
PERFORMANCE FABRIC

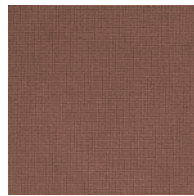
Burnt Umber



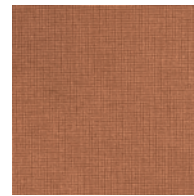
Caribbean



Charcoal



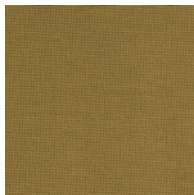
Coffee



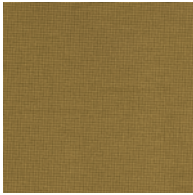
Copper



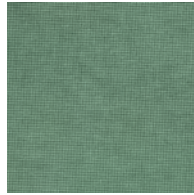
Nickel



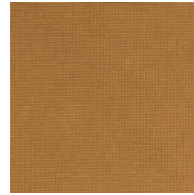
Olive



Rosewood



Shamrock



Topaz

# RESOURCE



## PERFORMANCE:

SURFACE TYPE: 100% POLYURETHANE (PVC FREE)  
WEIGHT AT 54 INCHES: 21 OZ/YD  
BACKING WEIGHT: 4.0 OZ/YD2  
BACKING TYPE/COMPOSITION: 100% POLYESTER  
REPEAT: NONE  
FINISH: STA\*KLEEN  
RAILROADED: NO

ASTM D 751-89  
THICKNESS 1±10% MM.  
TOTAL WEIGHT 13.6±10% OZ./YD2.  
ADHESION 4 X 4 MIN. LBS./IN.  
STRETCH 2 X 12% AT 15#

BLOCKING - FED. STD. 191A METHOD 5872 PASS

ABRASION RESISTANCE ASTM D4157-07  
PASSES 300,000 DOUBLE RUBS WYZENBEEK TEST  
METHOD

TEAR ASTM D5587-07  
15 X 12 MIN. LBS.

TENSILE ASTM D5034-09  
90 X 80 MIN. LBS./IN.

SEAM STRENGTH ASTM D1683-07A  
60 X 60 MIN. LBS.

RESISTANCE TO MILDEW ASTM G-21  
NO GROWTH

RESISTANCE TO HYDROLYSIS  
5 WEEKS NO DELAMINATING

UV STABILITY  
40 HOURS

CROCK RESISTANCE - FED. STD. 191A METHOD 5651  
20 - NO STAIN

## FLAMMABILITY:

PASSES CALIFORNIA TB117 SECTION E  
PASSES NFPA 260A  
PASSES ASTM E84  
UFAC CLASS I  
PASSES IMO A 652 (16) 8.2/8.3

MAY COMPLY WITH CALIFORNIA 133 WHEN TESTED  
WITH SUITABLE COMPONENTS

MEETS OR EXCEEDS ALL HEAVY-DUTY  
REQUIREMENTS FOR HEALTHCARE AND  
HOSPITALITY UPHOLSTERY FABRIC

## CLEANING CODE: SW

EXCLUSIVE STA\*KLEEN FINISH FOR EASY CARE AND  
STAIN-FREE SURFACES. MOST STAINS AND  
BALLPOINT PEN MARKS CAN BE EASILY WIPED OUT  
WITH A CLEAN DRY TOWEL. RUBBING ALCOHOL  
(ISOPROPYL ALCOHOL) CAN BE USED TO CLEAN  
ANY REMAINING STAIN. WASH AREA OFF WITH  
CLEAN WARM WATER TO REMOVE ANY  
RESIDUE.



Canvas

# WILLEMS

54" Wide

Repeat: N/A

Face: 100% Polyvinylchloride

Backing: 100% Polyester

Soil & Stain Repellent Finish

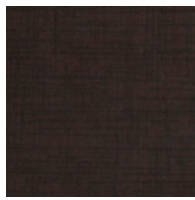
Exceeds 500,000 Double Rubs Wyzenbeek Method



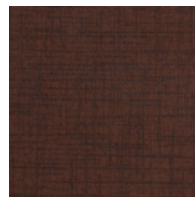
Amethyst



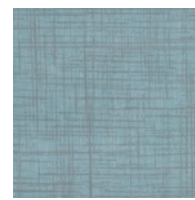
Autumn



Barista



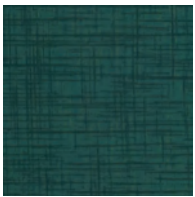
Cabin



Celestial



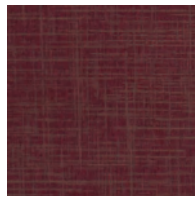
Cloud



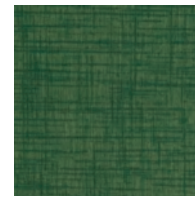
Clover



Cobalt



Flamenco



Fresh Cut Grass



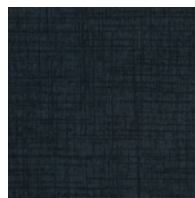
Haze



Indigo



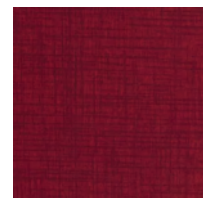
Mare



Onyx



Raw Linen



Romance



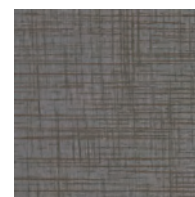
Slate



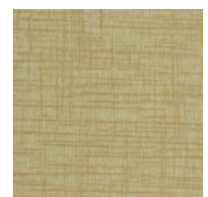
Spring



Tuscan Hills



Tweed



Wheat Fields

# WILLEMS

## PERFORMANCE:

SURFACE TYPE: 100% POLYVINYLCHLORIDE  
WEIGHT AT 54 INCHES: 32 OZ/YD  
BACKING WEIGHT: 4.4 OZ/YD2  
BACKING TYPE/COMPOSITION: 100% BRUSHED  
POLYESTER KNIT  
REPEAT: NONE  
FINISH: SOIL & STAIN  
RAILROADED: NO

ASTM D 751-89  
THICKNESS 1.15±10% MM.  
TOTAL WEIGHT 21.3±10% OZ./YD2.  
ADHESION 8.97 WARP/FULL BOND FILL

ABRASION RESISTANCE ASTM D4157-07  
PASSES 500,000 DOUBLE RUBS WYZENBEEK TEST  
METHOD

TEAR ASTM D5587-07  
8.5 WARP/6.54 FILL

TENSILE ASTM D5034-09  
131 WARP/95 FILL

SEAM STRENGTH ASTM D1683-07A  
60 WARP/40 FILL

RESISTANCE TO MILDEW ASTM G-21  
NO GROWTH

RESISTANCE TO HYDROLYSIS  
NO DELAMINATING

UV STABILITY  
650 HOURS

CROCK RESISTANCE - FED. STD. AATCC-METHOD  
8-2007  
5 DRY/5 WET

## FLAMMABILITY:

PASSES CALIFORNIA TB117 SECTION E  
PASSES NFPA 260A, UFAC CLASS I  
PASSES IMO A 652 (16) 8.2/8.3

MAY COMPLY WITH CALIFORNIA 133 WHEN TESTED  
WITH SUITABLE COMPONENTS

MEETS OR EXCEEDS ALL HEAVY-DUTY  
REQUIREMENTS FOR HEALTHCARE AND  
HOSPITALITY UPHOLSTERY FABRIC

## CARE & CLEANING GUIDE:

PROMPT CLEANING IS ALWAYS RECOMMENDED.  
RECOMMENDED CLEANING STEPS ARE LISTED  
BY TYPE OF STAIN. FOR BEST RESULTS FOLLOW  
CLEANING STEPS IN ORDER.

STEP 1: MILD SOAP AND WATER, THEN RINSE  
WITH FRESH WATER AND WIPE DRY WITH  
A CLEAN CLOTH.

STEP 2: WIPE AFFECTED AREA WITH A SOFT  
CLOTH OR SOFT BRISTLE BRUSH USING A  
NON-ABRASIVE CLEANER, FOR EXAMPLE  
FORMULA 409™ OR FANTASTIK™. RINSE  
WITH FRESH WATER AND WIPE DRY.

STEP 3: 10% SOLUTION OF HOUSEHOLD  
BLEACH AND WATER. RINSE WITH FRESH  
WATER AND WIPE DRY.

STEP 4: 25% SOLUTION OF ALCOHOL AND WATER.  
RINSE WITH FRESH WATER AND WIPE DRY.

STEP 5: 25% SOLUTION OF LIGHTER FLUID OR  
NAIL POLISH REMOVER AND WATER.  
RINSE WITH FRESH WATER AND WIPE DRY.

REGULAR CLEANING & MAINTENANCE - STEP 1  
OILS (ORGANIC & PETROLEUM BASE) - STEPS 1 & 2  
FOOD - STEPS 1 & 2  
HEALTHCARE - STEPS 1, 2, & 3  
DIFFICULT STAINS - STEPS 1, 2, 3, 4, & 5

FABRICUT<sup>®</sup>  
C O N T R A C T