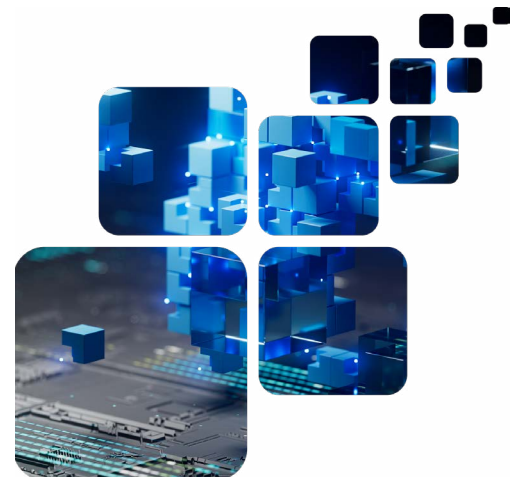


IPControl DDI Software

Advanced DNS, DHCP, IPAM (DDI)
Solutions



DDI is foundational to your network

DHCP, DNS and IPAM (DDI) is a critical necessity for today's IP networks, which are growing ever more complex as you deploy new IP services and technologies across WAN, SDWAN, multi-clouds, and SASE. Whether your business serves customers, employees, partners and/or suppliers, your end users rely on seamless IP address assignment and rapid name resolution to utilize IP network resources.

Get Complete DDI in one system

IPControl is an advanced, centralized DDI system that enables service providers and enterprises to take control of their IP address space and manage it according to their own policies and procedures. Using IPControl, organizations can achieve dramatic improvements in operational efficiency by simplifying and automating manual processes, reducing network downtime and creating a more stable and robust IP infrastructure capable of supporting SDWAN, SASE, IPv6, IoT, and multiple private/public clouds.

IPControl is the among the most flexible and adaptable DDI solutions available. Deployable as a software application or pre-installed on Sapphire appliances, IPControl provides centralized, full lifecycle management of critical

DDI functions, including IPv4/IPv6 address space allocation, reallocation, assignment, pool monitoring and utilization tracking, inventory assurance with layers 2 and 3 and cloud discovery, true address and subnet reclaim, and creation and deployment of multi-vendor DNS and DHCP configurations.

Overlay existing multi-vendor DNS/DHCP

Unlike many of today's DDI solutions that only really manage IP address space with a spreadsheet assist or a complete forklift "upgrade" of your existing infrastructure, IPControl integrates with your existing DNS and DHCP environment, providing support for Internet Systems Consortium (ISC Kea/ DHCP and BIND DNS), Microsoft, and Sapphire and runIP appliances. In addition, IPControl's extensive REST API facilitates integration points between IPControl and external systems for advanced automation and workflow of IPAM tasks and processes.

Enhance administrator control

IPControl's intuitive user interface, extensible templates and built-in validation features enable accurate configuration, consistent policy deployment and centralized management of IP address space and distributed DNS/DHCP servers even by non-expert users. In addition, granular access controls enable varying levels of responsibility to be delegated to multiple administrators across multiple dimensions.

Diverse network DDI with a single view

IPControl facilitates management of your IP space and DNS naming across your enterprise network sites, spanning into private and public cloud services, Internet of Things (IoT) realms, partner networks, external DNS services, and more.

Features

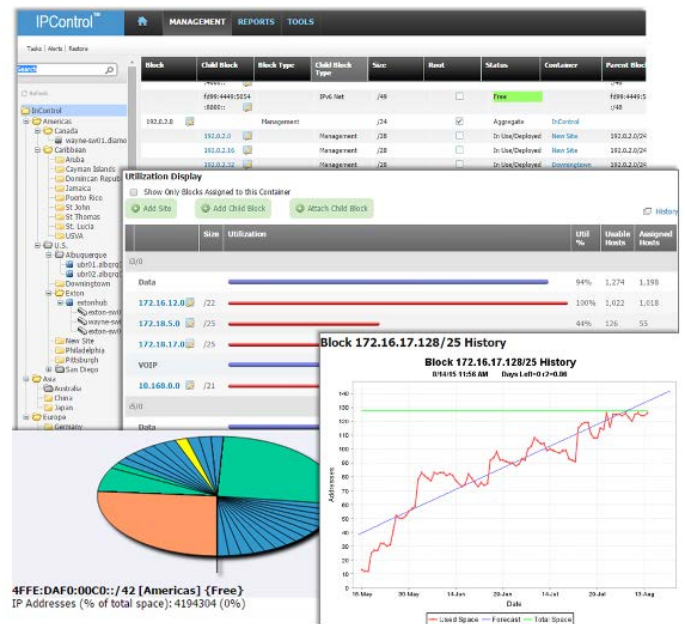
Managing hierarchical IP blocks effectively creates a solid foundation for an effective IP address plan and DNS/DHCP configuration.

Address Planning

- Track your IP address space across your enterprise network including AWS, Amazon and GCP.
- Manage IPAM on your terms with our policy-enabled logical container hierarchy.
- One-click multi-allocations of IPv4 and IPv6 networks allocated to any CIDR size or prefix length with ability to configure individual IP addresses, ranges or address pools within networks.
- Automated and manual IP address and subnet reclaim maximize address utilization efficiencies while providing further automation and time savings.
- User-defined policies determine which block and device types are permitted within the hierarchy and who can administer them.
- Address utilization trending and forecasting enables proactive address capacity management.
- Simplified address renumbering allows movement of address space to where it's needed.
- Manage multiple address tenants simply.
- Track and manage VLAN realms, ranges and IDs

DNS/DHCP Server Configuration

- Manage DNS zones and resource records for premises-based DNS servers and appliances and native cloud DNS services from Route 53, Azure DNS and Google DNS.
- Server templates scale the server configuration process.
- GUI configuration of critical DNS security features including an RPZ wizard, DNS firewall settings, rate limiting, ACLs, TSIG, update policies, DNSSEC, and more.
- Support for critical network services resiliency with DHCP failover, multi-master DNS, multi-tiered addressing, multi homed hosts, DHCP client classes, address processing, client ID, dynamic DNS, and more.
- Advanced features configuration via the GUI for views, catalog



zones, logging, address match lists, configuration, view and zone options and more.

- Integrated support for Cygna Labs Sapphire and runIP, ISC, Kea, BIND, and Microsoft DNS and DHCP servers.

Accountability and Control

- Patented container structure enables address management according to your topology, geography or other user-defined hierarchy.
- Robust REST API and callouts facilitate automation.
- Layer 2 switch, Layer 3 router, ARP and IP discovery provides IP inventory assurance and identifies potential access control violations.
- Advanced IPv6 address management enables automated block allocation, ip6.arpa domain creation, AAAA/PTR resource record automation.
- User-defined thresholds and alerts provide notification of impending address depletion.
- Granular administrator policies dictate access to functions, geographies, domains, subnets and blocks.
- Audit reporting promotes accountability and history tracking for administrators, subnets, devices, IP addresses and containers.

About Cygna Labs

Cygna Labs is a software developer and one of the top three global DDI vendors. Many Fortune 100 customers rely on Cygna Labs' DDI products and services, in addition to its industry-leading security and compliance solutions to detect and proactively mitigate data security threats, affordably pass compliance audits, and increase the productivity of their IT departments.

Cygna Labs Corp

sales@cygnalabs.com
Toll Free: 844.442.9462
Intl: +1 (305) 501-2430
www.cygnalabs.com

